

XXXXXX

Anne



XXXXXXXXXXXXXXXXXXXXXXXXXXXX





XXXXXX  
Anne

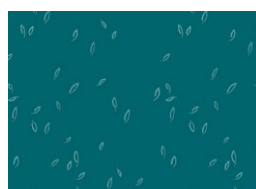


DESIGNED BY AGFstudio

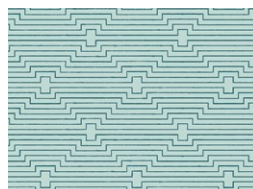
TROUVAILLE  
FABRICS DESIGNED BY AGF STUDIO



TRV-68120  
EVERBLOOMING CAMELLIAS DIM



TRV-58126  
DANCING LEAVES TEAL



TRV-68121  
TREASURED DISCOVERY



TRV-58125  
MOON GLOW GLISTEN

## ADDITIONAL BLENDERS FOR THIS PROJECT



PE-464  
WARM WAVE



DEN-S-2008  
CLASSIC DENIM



FEEL THE DIFFERENCE © 2020 Courtesy of Art Gallery Quilts LLC. All Rights Reserved.



FINISHED SIZE | 20" x 20"

## FABRIC REQUIREMENTS

Fabric <b>A</b>	TRV-68120	$\frac{1}{6}$ yd.
Fabric <b>B</b>	TRV-58126	F8
Fabric <b>C</b>	TRV-68121	F8
Fabric <b>D</b>	PE-464	$\frac{1}{6}$ yd.
Fabric <b>E</b>	TRV-58125	$\frac{2}{3}$ yd.
Fabric <b>F</b>	DEN-S-2008	$\frac{1}{3}$ yd.

BACKING FABRIC  
TRV-58125- (Included)

## CUTTING DIRECTIONS

$\frac{1}{4}$ " seam allowances are included.  
WOF means width of fabric.

- Twenty (20)  $2\frac{1}{2}$ " squares from fabric **A**
- Eight (8)  $2\frac{1}{2}$ " squares from fabric **B**
- Twelve (12)  $2\frac{1}{2}$ " squares from fabric **C**
- Twenty (20)  $2\frac{1}{2}$ " squares from fabric **D**
- Twenty four (24)  $2\frac{1}{2}$ " squares from fabric **E**
- Two (2)  $15" \times 20\frac{1}{2}"$  rectangles from fabric **E** (backing)
- Seventy two (72)  $2\frac{1}{2}" \times 1"$  strips from fabric **F**
- Two (2)  $10" \times 1"$  strips from fabric **F**
- Two (2)  $15" \times 1"$  strips from fabric **F**
- Two (2)  $20" \times 1"$  strips from fabric **F**
- Two (2)  $25" \times 1"$  strips from fabric **F**
- Three (3)  $30" \times 1"$  strips from fabric **F**

## CONSTRUCTION

Sew all rights sides together with  $\frac{1}{4}$ " seam allowance.

- Join (4)  $2\frac{1}{2}"$  squares from fabric **E** and (2)  $1" \times 2\frac{1}{2}"$  strips from fabric **F** following the diagram below.
- Create a total of two.



DIAGRAM 1

- Join (4)  $2\frac{1}{2}"$  squares from fabrics **D, E**, (6)  $1" \times 2\frac{1}{2}"$  strips from fabric **F** and (1)  $10" \times 1"$  strip from fabric **F** following the diagram below.
- Create a total of two.



DIAGRAM 2

- Join (4)  $2\frac{1}{2}"$  squares from fabrics **A, D, E**, (10)  $1" \times 2\frac{1}{2}"$  strips from fabric **F** and (1)  $15" \times 1"$  strip from fabric **F** following the diagram below.
- Create a total of two.



DIAGRAM 3

- Join (4)  $2\frac{1}{2}"$  squares from fabrics **A, C, D, D**, (14)  $1" \times 2\frac{1}{2}"$  strips from fabric **F** and (1)  $10" \times 1"$  strip from fabric **F** following the diagram below.
- Create a total of two.

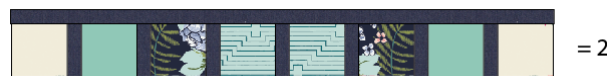


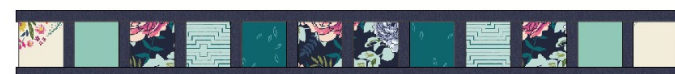
DIAGRAM 4

- 
- =

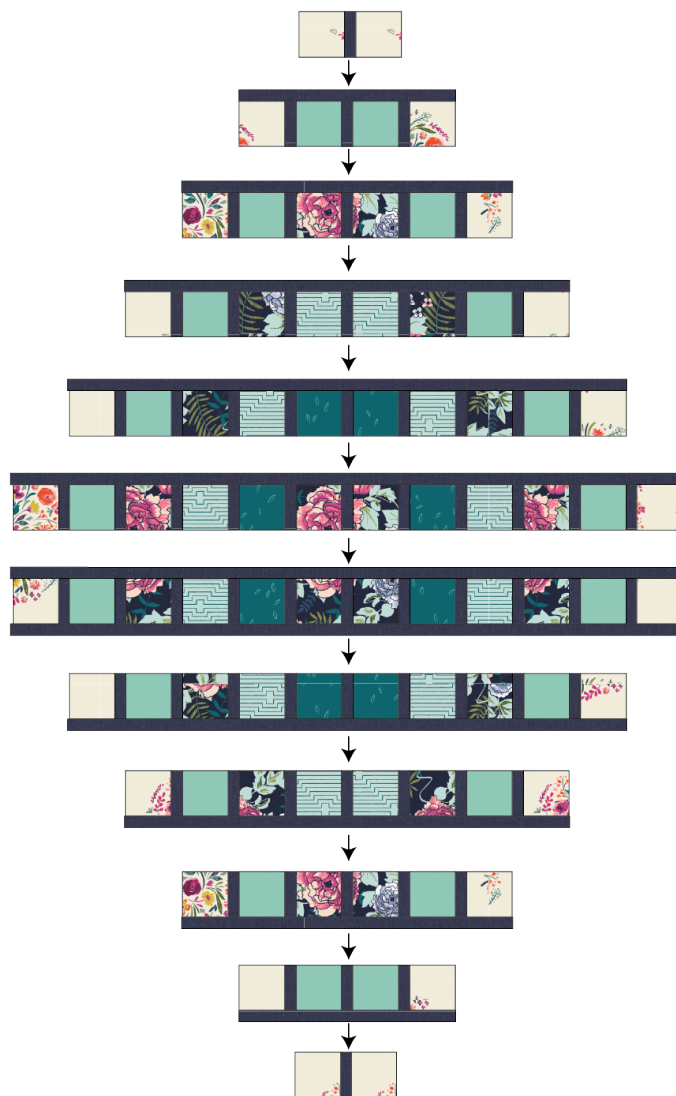
- Join (8) 2½" squares from fabric **A**, (4) 2½" squares from fabrics **B, C, D, E**, (18) 1" x 2½" strips from fabric **F** and (1) 30" x 1" strip from fabric **F** following the diagram below.

- 

- Take one row and join another 30" x 1" strip from fabric **F** to the bottom part of the unit.



- For the pieces assembled from diagrams 1-6, take one of each and rotate them  $180^\circ$ , facing the opposite direction.
- Join each row following the diagram below.



artgalleryfabrics.com



- Rotate 90° and trim to 20½" x 20½"

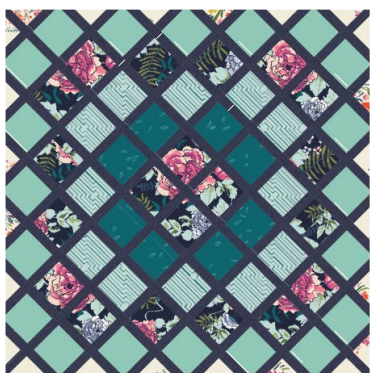


DIAGRAM 8

## CREATING THE BACK PILLOW

*Sew all rights sides together with ¼"seam allowance. Press open.*

- To make a envelope back for your pillow take both 15" x 20½" rectangles from fabric **E** and fold one 15" side on each rectangle in ½" and press.
- Then fold it another ½" and press.
- Top stitch as close to the edge as possible.
- Place rectangles right side together on top of each other to the front of your pillow and stitch all the way around your pillow at ¼" seam allowance.
- Clip corners at seam allowance and flip piece to the right side of the fabric.
- Fill pillow with a 20" x 20" pillow form and enjoy!



XXXXXXXXXXXXXXXXXXXXXXXXXXXXXXXXXXXX

*Congratulations*  
*& enjoy*

XXXXXXXXXXXXXXXXXXXXXXXXXXXXXXXXXXXX



[artgalleryfabrics.com](http://artgalleryfabrics.com)

NOTE: While all possible care has been taken to ensure the accuracy of this pattern, We are not responsible for printing errors or the way in which individual work varies.

Please read instructions carefully before starting the construction of this quilt. If desired, wash and iron your fabrics before starting to cut.

© 2020 Courtesy of Art Gallery Quilts LLC. All Rights Reserved.