

Jamilla



FUSIONS

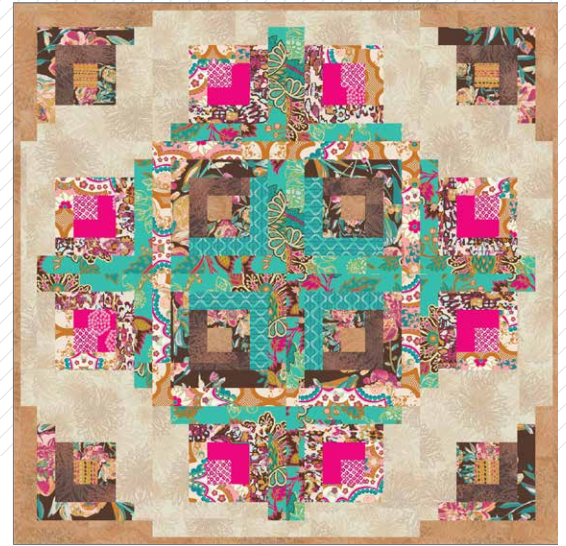
by AGF

FREE PATTERN

XXXXXXXXXXXXXXXXXXXXXXXXXXXX

Jamilla

QUILT DESIGNED BY AGFstudio



MARRAKESH FUSION



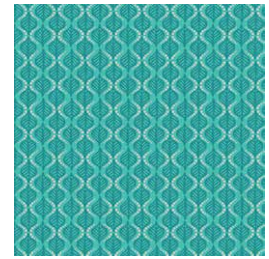
FUS-M-2000
EXOTIC FLORA MARRAKESH
by Pat Bravo



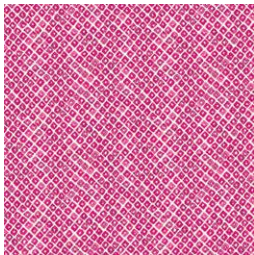
FUS-M-2001
DROPLET PETAL MARRAKESH
by Pat Bravo



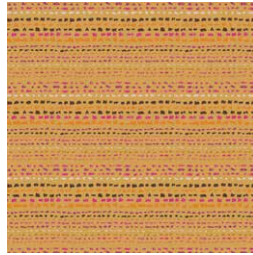
FUS-M-2002
BRIT BOUTIQUE MARRAKESH
by Pat Bravo



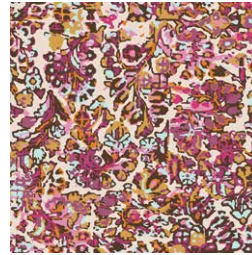
FUS-M-2003
TERRA STAMPS MARRAKESH
by AGF Studio



FUS-M-2008
SEEDS OF MARRAKESH
by Katarina Roccella



FUS-M-2005
TRAVELER MARRAKESH
by Sharon Holland



FUS-M-2006
TREASURED MARRAKESH
by April Rhodes



FUS-M-2009
PRIMA FLORA MARRAKESH
by Bari J.



ADDITIONAL BLENDERS FOR THIS PROJECT



FE-504
SAND



FE-501
SPICY BROWN



FE-526
MOCHA



FINISHED SIZE | 88" x 88"

FABRIC REQUIREMENTS

Fabric A	FUS-M-2000	1 $\frac{1}{3}$ yd.
Fabric B	FUS-M-2003	$\frac{1}{3}$ yd.
Fabric C	FUS-M-2009	1 yd.
Fabric D	FUS-M-2006	$\frac{3}{4}$ yd.
Fabric E	FUS-M-2002	1 yd.
Fabric F	FUS-M-2001	$\frac{1}{3}$ yd.
Fabric G	FUS-M-2008	$\frac{1}{8}$ yd.
Fabric H	FUS-M-2005	$\frac{1}{8}$ yd.
Fabric I	FE-504	2 $\frac{1}{2}$ yd.
Fabric J	FE-501	$\frac{1}{3}$ yd.
Fabric K	FE-526	1 yd.

BACKING FABRIC
FUS-M-2007 8 $\frac{1}{4}$ yds (*Suggested*)

BINDING FABRIC
Fabric **K** FE-526 (*Included*)

CUTTING DIRECTIONS

*$\frac{1}{4}$ " seam allowances are included.
WOF means width of fabric.*

Fabric **A**

- Twelve (12) 16 $\frac{1}{2}$ " x 3 $\frac{1}{2}$ " strips.
- Twelve (12) 19 $\frac{1}{2}$ " x 3 $\frac{1}{2}$ " strips.

Fabric **B**

- Four (4) 10 $\frac{1}{2}$ " x 3 $\frac{1}{2}$ " strips.
- Four (4) 13 $\frac{1}{2}$ " x 3 $\frac{1}{2}$ " strips.

Fabric **C**

- Eight (8) 4 $\frac{1}{2}$ " x 3 $\frac{1}{2}$ " strips.
- Eight (8) 7 $\frac{1}{2}$ " x 3 $\frac{1}{2}$ " strips.
- Eight (8) 13 $\frac{1}{2}$ " x 3 $\frac{1}{2}$ " strips.
- Eight (8) 16 $\frac{1}{2}$ " x 3 $\frac{1}{2}$ " strips.

Fabric **D**

- Eight (8) 10 $\frac{1}{2}$ " x 3 $\frac{1}{2}$ " strips.
- Eight (8) 13 $\frac{1}{2}$ " x 3 $\frac{1}{2}$ " strips.

Fabric **E**

- Four (4) 19 $\frac{1}{2}$ " x 3 $\frac{1}{2}$ " strips.
- Four (4) 22 $\frac{1}{2}$ " x 3 $\frac{1}{2}$ " strips.
- Eight (8) 10 $\frac{1}{2}$ " x 3 $\frac{1}{2}$ " strips.
- Eight (8) 7 $\frac{1}{2}$ " x 3 $\frac{1}{2}$ " strips.

Fabric **F**

- Eight (8) 4 $\frac{1}{2}$ " x 3 $\frac{1}{2}$ " strips.
- Eight (8) 7 $\frac{1}{2}$ " x 3 $\frac{1}{2}$ " strips.

Fabric **G**

- Eight (8) 4 $\frac{1}{2}$ " x 4 $\frac{1}{2}$ " squares.

Fabric **H**

- Four (4) 4 $\frac{1}{2}$ " x 4 $\frac{1}{2}$ " squares.

Fabric **I**

- Twelve (12) 19 $\frac{1}{2}$ " x 3 $\frac{1}{2}$ " strips.
- Twelve (12) 16 $\frac{1}{2}$ " x 3 $\frac{1}{2}$ " strips.
- Twelve (12) 13 $\frac{1}{2}$ " x 3 $\frac{1}{2}$ " strips.
- Four (4) 10 $\frac{1}{2}$ " x 3 $\frac{1}{2}$ " strips.

Fabric **J**

- Eight (8) 10 $\frac{1}{2}$ " x 3 $\frac{1}{2}$ " strips.
- Eight (8) 7 $\frac{1}{2}$ " x 3 $\frac{1}{2}$ " strips.

Fabric **K**

- Four (4) 22 $\frac{1}{2}$ " x 3 $\frac{1}{2}$ " strips.
- Four (4) 19 $\frac{1}{2}$ " x 3 $\frac{1}{2}$ " strips.
- Nine (9) 1 $\frac{1}{2}$ " x WOF (Binding)

CONSTRUCTION

Sew all rights sides together with $\frac{1}{4}$ " seam allowance.

- This project is made out of log cabin blocks.
- We'll have three different combinations of the same block.
- We will name block 1, block 2, and block 3.

Block 1:

- For fabric placement and attachments follow step 1 through 12.
- We will need (4) block 1.

Step 1:

- Join (1) $4\frac{1}{2}$ " x $4\frac{1}{2}$ " square from fabric **H** and a $4\frac{1}{2}$ " x $3\frac{1}{2}$ " rectangle from fabric **C**.

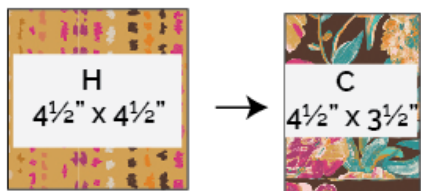


DIAGRAM 1

Step 2

- Join (1) $7\frac{1}{2}$ " x $3\frac{1}{2}$ " rectangle from fabric **C**.



DIAGRAM 2

Step 3:

- Join (1) $7\frac{1}{2}$ " x $3\frac{1}{2}$ " rectangle from fabric **J**.

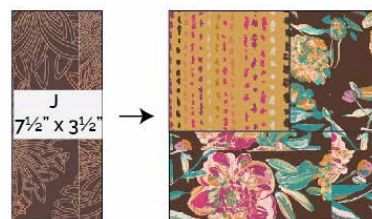


DIAGRAM 3

Step 4:

- Join (1) $10\frac{1}{2}$ " x $3\frac{1}{2}$ " rectangle from fabric **J**.



DIAGRAM 4

Step 5:

- Join (1) $10\frac{1}{2}$ " x $3\frac{1}{2}$ " rectangle from fabric **I**.



DIAGRAM 5

Step 6:

- Join (1) 13½" x 3½" rectangle from fabric **I**.



DIAGRAM 6

Step 7:

- Join (1) 13½" x 3½" rectangle from fabric **C**.

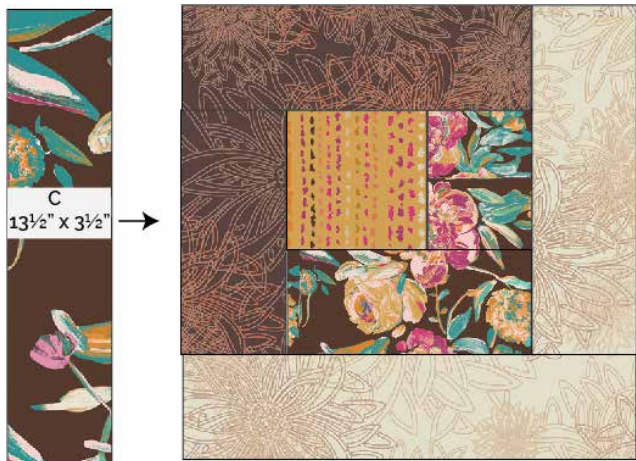


DIAGRAM 7

Step 8:

- Join (1) 16½" x 3½" rectangle from fabric **C**.



DIAGRAM 8

Step 9:

- Join (1) 16½" x 3½" rectangle from fabric **I**.

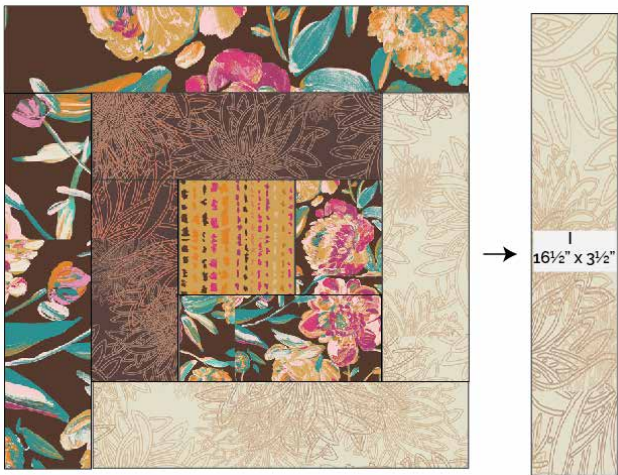


DIAGRAM 9

Block 2:

- For fabric placement and attachments follow step 1 through 12.
- We will need (4) block 2.

Step 1:

- Join (1) $4\frac{1}{2}" \times 4\frac{1}{2}"$ square from fabric **K** and a $4\frac{1}{2}" \times 3\frac{1}{2}"$ rectangle from fabric **C**.

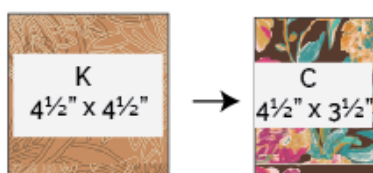


DIAGRAM 14

Step 2:

- Join (1) $7\frac{1}{2}" \times 3\frac{1}{2}"$ rectangle from fabric **C**.

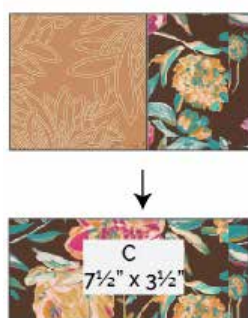


DIAGRAM 15

Step 3:

- Join (1) $7\frac{1}{2}" \times 3\frac{1}{2}"$ rectangle from fabric **J**.

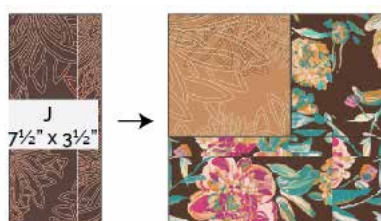


DIAGRAM 16

Step 4:

- Join (1) $10\frac{1}{2}" \times 3\frac{1}{2}"$ rectangle from fabric **J**.



DIAGRAM 17

Step 5:

- Join (1) $10\frac{1}{2}" \times 3\frac{1}{2}"$ rectangle from fabric **B**.

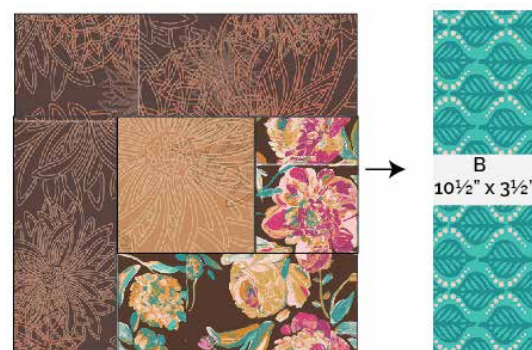


DIAGRAM 18

Step 6:

- Join (1) $13\frac{1}{2}" \times 3\frac{1}{2}"$ rectangle from fabric **B**.



DIAGRAM 19

Step 7:

- Join (1) 13½" x 3½" rectangle from fabric **C**.



DIAGRAM 20

Step 8:

- Join (1) 16½" x 3½" rectangle from fabric **C**.



DIAGRAM 21

Step 9:

- Join (1) 16½" x 3½" rectangle from fabric **A**.



DIAGRAM 22

Step 10:

- Join (1) 19½" x 3½" rectangle from fabric **A**.

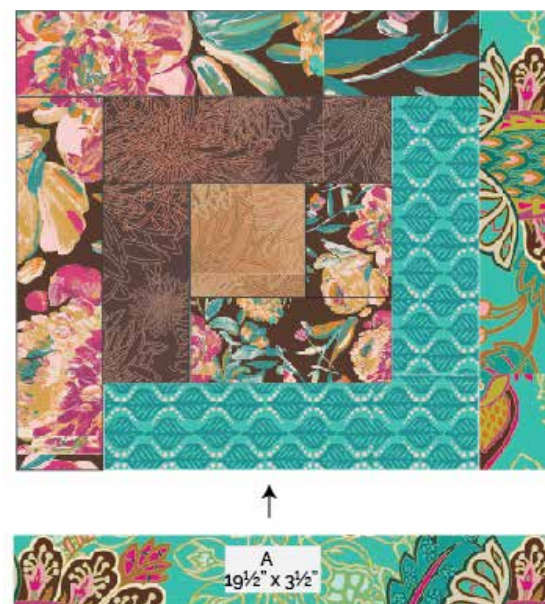


DIAGRAM 23

Step 11:

- Join (1) $19\frac{1}{2}" \times 3\frac{1}{2}"$ rectangle from fabric **E**.



DIAGRAM 24

Step 12:

- Join (1) $22\frac{1}{2}" \times 3\frac{1}{2}"$ rectangle from fabric **E**.



DIAGRAM 25

Block 2:

- This is how block 2 will look.

Block 2 (x4)



DIAGRAM 26

Block 3:

- For fabric placement and attachments follow step 1 through 12.
- We will need eight (8) Block 3.

Step 1:

- Join (1) $4\frac{1}{2}" \times 4\frac{1}{2}"$ square from fabric **G** and a $4\frac{1}{2}" \times 3\frac{1}{2}"$ rectangle from fabric **F**.

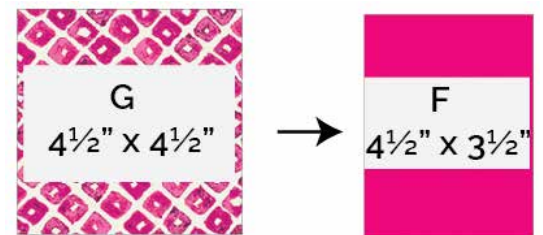


DIAGRAM 27

Step 2:

- Join (1) $7\frac{1}{2}" \times 3\frac{1}{2}"$ rectangle from fabric **F**.

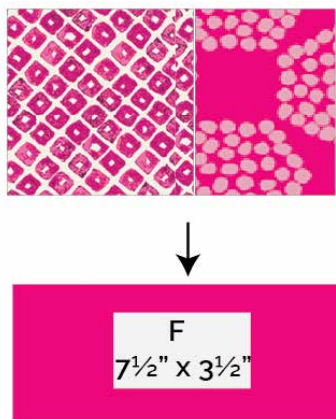


DIAGRAM 28

Step 3:

- Join (1) $7\frac{1}{2}" \times 3\frac{1}{2}"$ rectangle from fabric **E**.

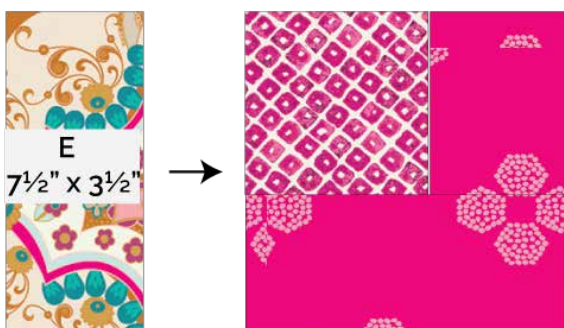


DIAGRAM 29

Step 4:

- Join (1) $10\frac{1}{2}" \times 3\frac{1}{2}"$ rectangle from fabric **E**.

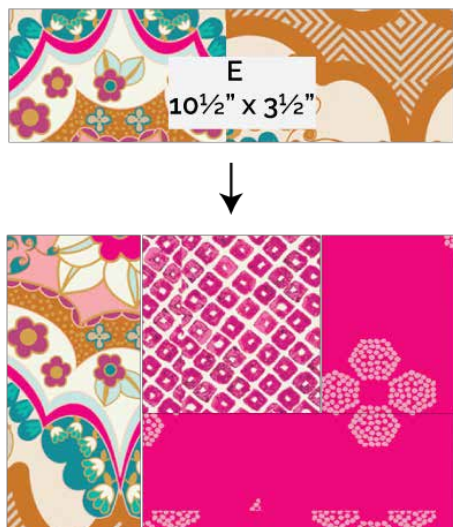


DIAGRAM 30

Step 5:

- Join (1) $10\frac{1}{2}" \times 3\frac{1}{2}"$ rectangle from fabric **D**.

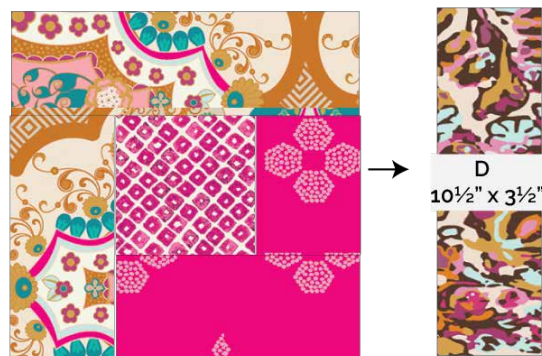


DIAGRAM 31

Step 6:

- Join (1) $13\frac{1}{2}" \times 3\frac{1}{2}"$ rectangle from fabric **D**.

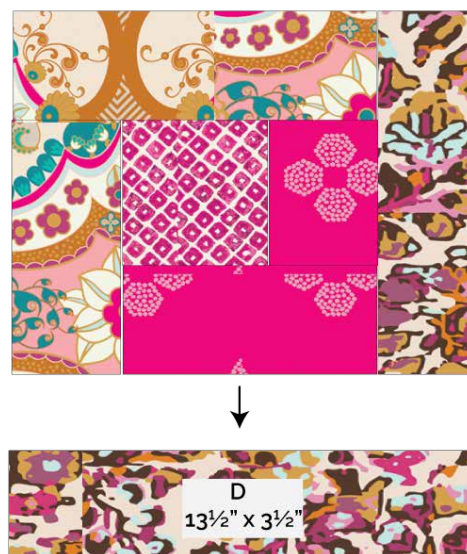


DIAGRAM 32

Step 7:

- Join (1) $13\frac{1}{2}" \times 3\frac{1}{2}"$ rectangle from fabric **I**.

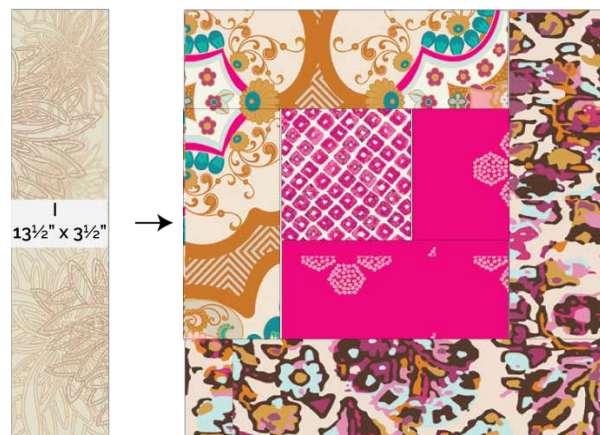


DIAGRAM 33

Step 8:

- Join (1) 16½" x 3½" rectangle from fabric **I**.



DIAGRAM 34

Step 9:

- Join (1) 16½" x 3½" rectangle from fabric **A**.



DIAGRAM 35

Step 10:

- Join (1) 19½" x 3½" rectangle from fabric **A**.



DIAGRAM 36

Step 11:

- Join (1) 19½" x 3½" rectangle from fabric **I**.



DIAGRAM 37

Step 12:

- Join (1) $22\frac{1}{2}" \times 3\frac{1}{2}"$ rectangle from fabric I.



DIAGRAM 38

Block 3

- This is how block 3 will look.

Block 3 (x8)

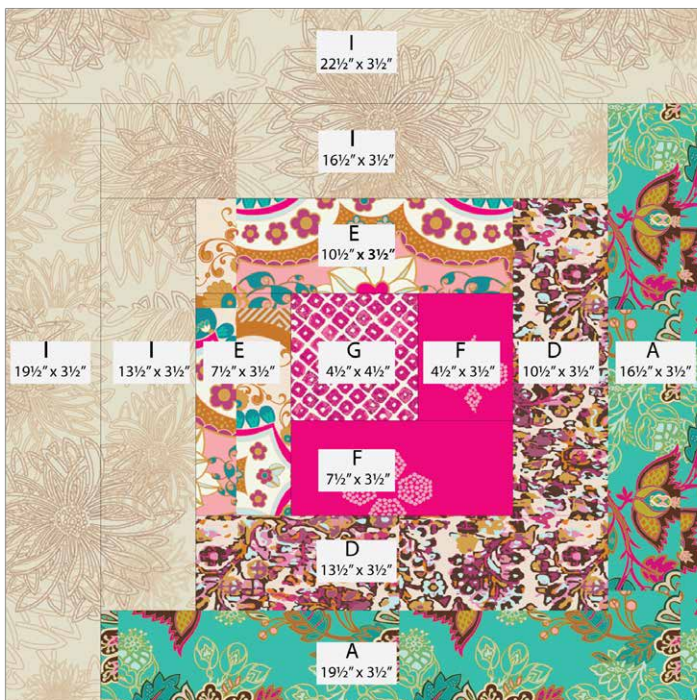


DIAGRAM 39

- We will end up with (4) blocks 1, (4) blocks 2, and (8) blocks 3.



DIAGRAM 40

- Arrange blocks in four (4) rows of four (4) blocks each.
- Row 1:** block 1 - block 3 - block 3 - block 1.
- Row 2:** block 3 - block 2 - block 2 - block 3.
- Row 3:** block 3 - block 2 - block 2 - block 3.
- Row 4:** block 1 - block 3 - block 3 - block 1.
- See diagram below for reference.

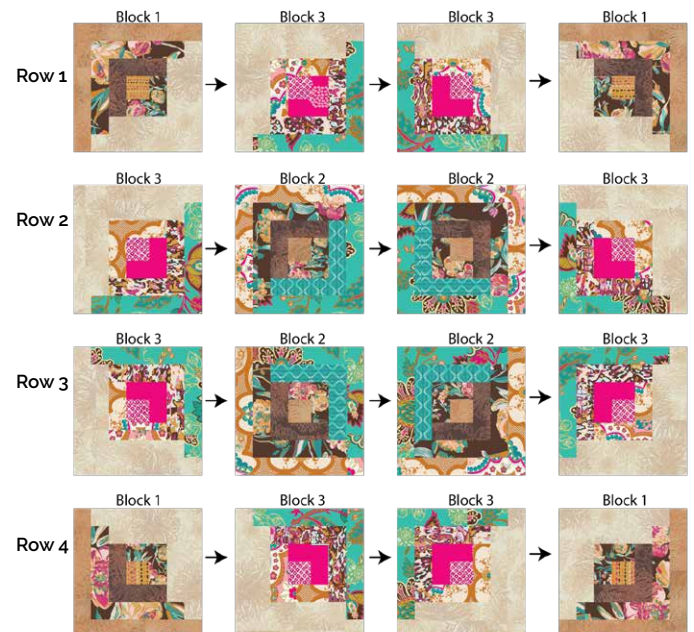


DIAGRAM 41

- Sew rows together.

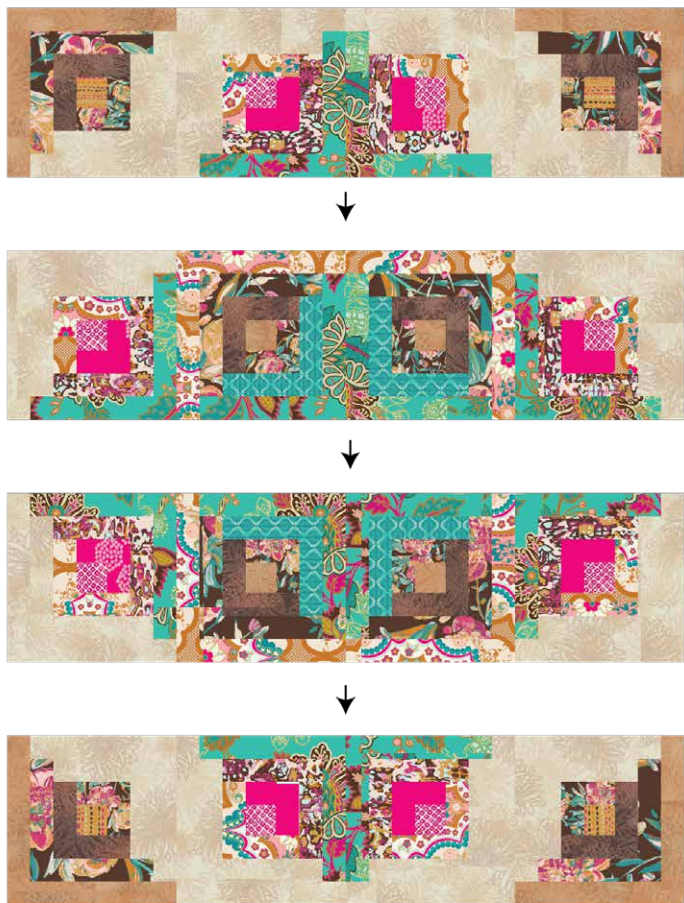


DIAGRAM 42

- Quilt as desired.



DIAGRAM 43

QUILT ASSEMBLY

Sew rights sides together.

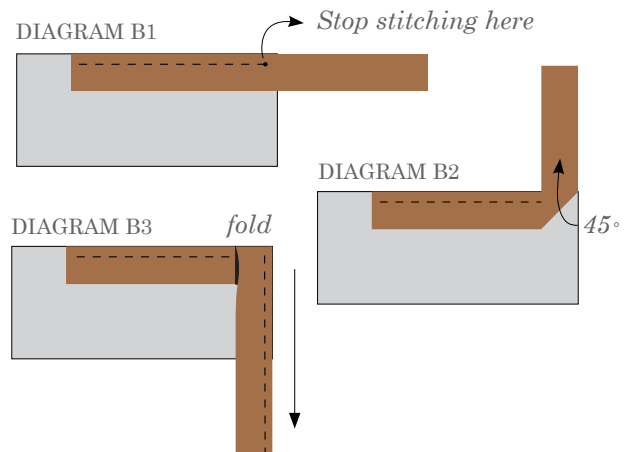
- Place BACKING FABRIC on a large surface wrong side up. Stretch it with masking tape against that surface.
- Place BATTING on top of backing fabric.
- Place TOP on top of the batting with right side facing up. Smooth away wrinkles using your hands.
- Pin all layers together and baste with basting thread, using long stitches. You can also use safety pins to join the layers.
- Machine or hand quilt starting at the center and working towards the corners. Remember that quilting motifs are a matter of personal preference. Have fun choosing yours!
- After you finished, trim excess of any fabric or batting, squaring the quilt to proceed to bind it.

BINDING

Sew rights sides together.

- Cut enough strips $1\frac{1}{2}$ " wide by the width of the fabric **K** to make a final strip 362" long. Start sewing the binding strip in the middle of one of the sides of the quilt, placing the strip right side down and leaving an approximated 5" tail. Sew with $\frac{1}{4}$ " seam allowance (using straight stitch), aligning the strip's raw edge with the quilt top's raw edge.
- Stop stitching $\frac{1}{4}$ " before the edge of the quilt (DIAGRAM B 1). Clip the threads. Remove the quilt from under the machine presser foot. Fold the strip in a motion of 45° and upward, pressing with your fingers (DIAGRAM B2). Hold this fold with your finger, bring the strip down in line with the next edge, making a horizontal fold that aligns with the top edge of the quilt (DIAGRAM B3). Start sewing at $\frac{1}{4}$ " of the border, stitching all the layers. Do the same in the four corners of the quilt.

- Stop stitching before you reach the last 5 or 6 inches. Cut the threads and remove the quilt from under the machine presser foot. Lay the loose ends of the binding flat along the quilt edge, folding the ends back on themselves where they meet. Press them together to form a crease. Using this crease as the stitching line, sew the two open ends of the binding with right sides together (you can help yourself marking with a pencil if the crease is difficult to see).
- Trim seam to $\frac{1}{4}$ " and press open. Complete the sewing. Turn binding to back of the quilt, turn raw edge inside and stitch by hand using blind stitch.



XXXXXXXXXXXXXXXXXXXXXXXXXXXXXXXXXXXX

*Congratulations
& enjoy*

XXXXXXXXXXXXXXXXXXXXXXXXXXXXXXXXXXXX



artgalleryfabrics.com

NOTE: While all possible care has been taken to ensure the accuracy of this pattern, We are not responsible for printing errors or the way in which individual work varies.

Please read instructions carefully before starting the construction of this quilt. If desired, wash and iron your fabrics before starting to cut.

© 2020 Courtesy of Art Gallery Quilts LLC. All Rights Reserved.