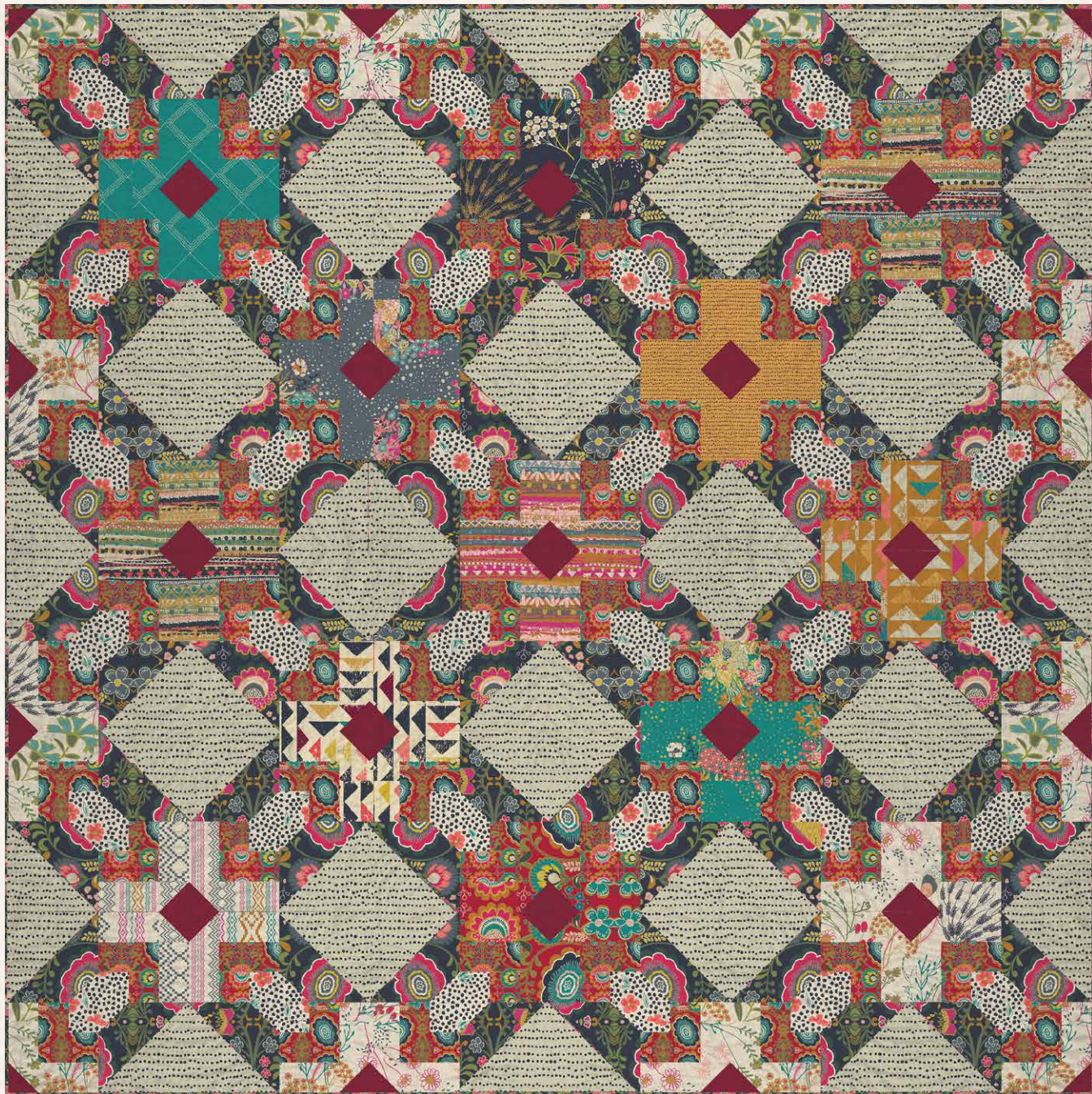
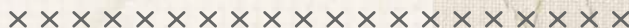


# Folklore



FREE PATTERN





# Folklore

Pat Bravo

QUILT DESIGNED BY PAT BRAVO



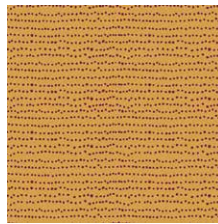
# INDIEfolk

FABRICS DESIGNED BY PAT BRAVO

MEMORIES



IFL-46300  
KHOKHLOMA BURGUNDIA



IFL-46301  
FLECKS AUBURN



IFL-46302  
MEADOW DIM



IFL-46304  
TRINKET VIVID



IFL-46305  
MIST FLORA LUMINOUS



IFL-46308  
VERDANT BLOOM



IFL-46309  
WHIRL ROUGE



IFL-46310  
TROJKAT SUNRISE

FABLES



IFL-56300  
KHOKHLOMA GLOOM



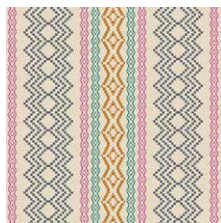
IFL-56301  
FLECKS INDIGO



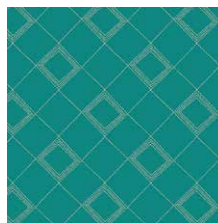
IFL-56302  
MEADOW VIVID



IFL-56304  
TRINKET BLUSH



IFL-56306  
PATHWAYS RICH



IFL-56307  
TARTAN TEAL



IFL-56308  
POWDER BLOOM



IFL-56310  
TROJKAT DESERT



ADDITIONAL BLENDERS FOR THIS PROJECT



PE-427  
SPICEBERRY

# Folklore

FINISHED SIZE | 72" x 72"

## FABRIC REQUIREMENTS

Fabric <b>A</b>	IFL-46300	1 yd.
Fabric <b>B</b>	IFL-46301	$\frac{1}{8}$ yd.
Fabric <b>C</b>	IFL-46302	$\frac{1}{4}$ yd.
Fabric <b>D</b>	IFL-46304	$\frac{1}{4}$ yd.
Fabric <b>E</b>	IFL-46305	$\frac{3}{4}$ yd.
Fabric <b>F</b>	IFL-46308	$\frac{1}{8}$ yd.
Fabric <b>G</b>	IFL-46310	$\frac{1}{8}$ yd.
Fabric <b>H</b>	IFL-56300	$1\frac{1}{2}$ yd.
Fabric <b>I</b>	IFL-56301	$1\frac{1}{4}$ yd.
Fabric <b>J</b>	IFL-56302	$\frac{1}{2}$ yd.
Fabric <b>K</b>	IFL-56304	$\frac{1}{8}$ yd.
Fabric <b>L</b>	IFL-56306	$\frac{1}{8}$ yd.
Fabric <b>M</b>	IFL-56307	$\frac{1}{8}$ yd.
Fabric <b>N</b>	IFL-56308	$\frac{1}{8}$ yd.
Fabric <b>O</b>	IFL-56310	$\frac{1}{8}$ yd.
Fabric <b>P</b>	PE-427	$\frac{1}{3}$ yd.

### BACKING FABRIC

IFL-56309 5 yd *(Suggested)*

### BINDING FABRIC

Fabric **H** IFL-56300 *(Included)*

## CUTTING DIRECTIONS

*$\frac{1}{4}$ " seam allowances are included.*

- Seventy two (72)  $4\frac{1}{2}$ " x  $2\frac{1}{2}$ " rectangles from fabric **A**.
- Seventy two (72)  $2\frac{1}{2}$ " x  $2\frac{1}{2}$ " squares from fabric **A**.
- Eight (8)  $4\frac{1}{2}$ " x  $2\frac{1}{2}$ " rectangles from fabric **B**.
- Two (2)  $2\frac{7}{8}$ " x  $2\frac{7}{8}$ " squares from fabric **B**.
- Sixteen (16)  $4\frac{1}{2}$ " x  $2\frac{1}{2}$ " rectangles from fabric **C**.
- Four (4)  $2\frac{7}{8}$ " x  $2\frac{7}{8}$ " squares from fabric **C**.
- Sixteen (16)  $4\frac{1}{2}$ " x  $2\frac{1}{2}$ " rectangles from fabric **D**.
- Four (4)  $2\frac{7}{8}$ " x  $2\frac{7}{8}$ " squares from fabric **D**.
- One hundred forty four (144)  $2\frac{1}{2}$ " x  $2\frac{1}{2}$ " squares from fabric **E**.
- Eight (8)  $4\frac{1}{2}$ " x  $2\frac{1}{2}$ " rectangles from fabric **F**.
- Two (2)  $2\frac{7}{8}$ " x  $2\frac{7}{8}$ " squares from fabric **F**.
- Eight (8)  $4\frac{1}{2}$ " x  $2\frac{1}{2}$ " rectangles from fabric **G**.
- Two (2)  $2\frac{7}{8}$ " x  $2\frac{7}{8}$ " squares from fabric **G**.
- Thirty six (36)  $6\frac{7}{8}$ " x  $6\frac{7}{8}$ " squares from fabric **H**.
- Thirty six (36)  $6\frac{7}{8}$ " x  $6\frac{7}{8}$ " squares from fabric **I**.
- Forty eight (48)  $4\frac{1}{2}$ " x  $2\frac{1}{2}$ " rectangles from fabric **J**.
- Twelve (12)  $2\frac{7}{8}$ " x  $2\frac{7}{8}$ " squares from fabric **J**.
- Eight (8)  $4\frac{1}{2}$ " x  $2\frac{1}{2}$ " rectangles from fabric **K**.
- Two (2)  $2\frac{7}{8}$ " x  $2\frac{7}{8}$ " squares from fabric **K**.
- Eight (8)  $4\frac{1}{2}$ " x  $2\frac{1}{2}$ " rectangles from fabric **L**.
- Two (2)  $2\frac{7}{8}$ " x  $2\frac{7}{8}$ " squares from fabric **L**.
- Eight (8)  $4\frac{1}{2}$ " x  $2\frac{1}{2}$ " rectangles from fabric **M**.
- Two (2)  $2\frac{7}{8}$ " x  $2\frac{7}{8}$ " squares from fabric **M**.
- Eight (8)  $4\frac{1}{2}$ " x  $2\frac{1}{2}$ " rectangles from fabric **N**.
- Two (2)  $2\frac{7}{8}$ " x  $2\frac{7}{8}$ " squares from fabric **N**.
- Eight (8)  $4\frac{1}{2}$ " x  $2\frac{1}{2}$ " rectangles from fabric **O**.
- Two (2)  $2\frac{7}{8}$ " x  $2\frac{7}{8}$ " squares from fabric **O**.
- Thirty six (36)  $2\frac{7}{8}$ " x  $2\frac{7}{8}$ " squares from fabric **P**.





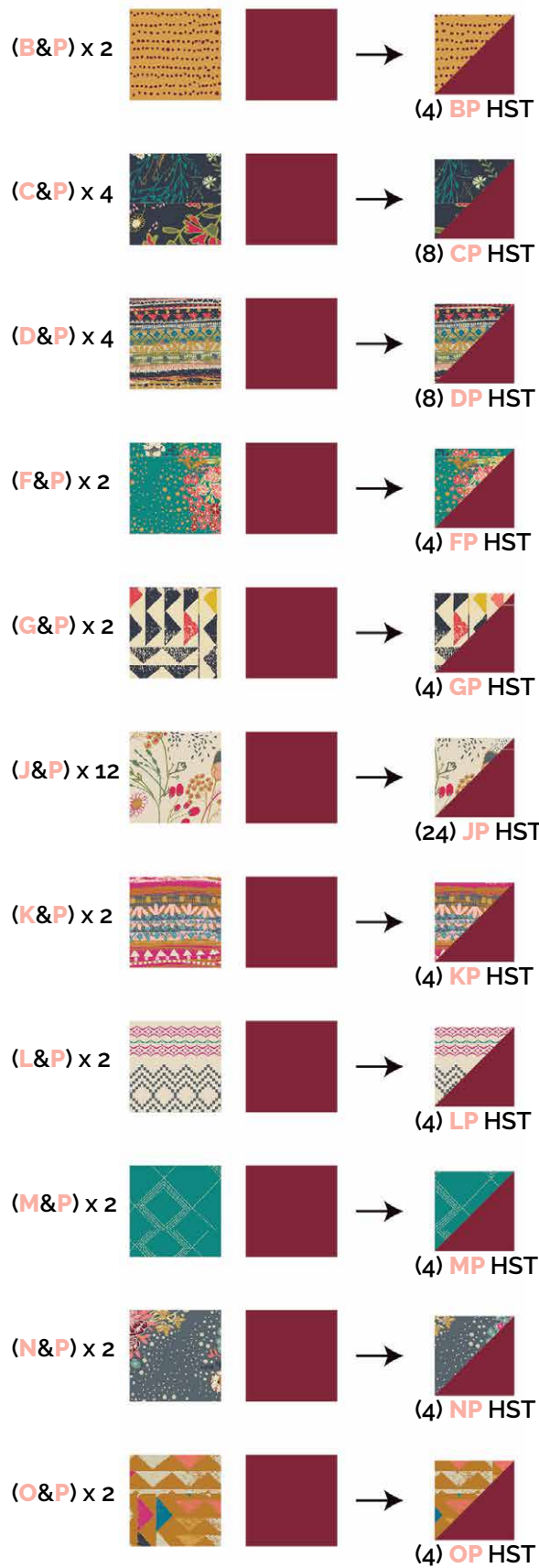


DIAGRAM 5

**Block 3 (x4):**

- Take four (4) block 2 and **BP** HST and eight (8)  $4\frac{1}{2} \times 2\frac{1}{2}$ " rectangles from fabric **B**.
- Join each block 2 to one (1)  $4\frac{1}{2} \times 2\frac{1}{2}$ " rectangle from fabric **B**.
- Join each **BP** HST to one (1)  $4\frac{1}{2} \times 2\frac{1}{2}$ " rectangle from fabric **B**.
- Join both blocks

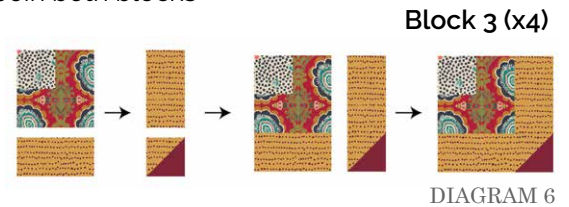


DIAGRAM 6

**Block 4 (x8):**

- Take four (8) block 2 and **CP** HST, and sixteen (16)  $4\frac{1}{2} \times 2\frac{1}{2}$ " rectangles from fabric **C**.
- Join each block 2 to one (1)  $4\frac{1}{2} \times 2\frac{1}{2}$ " rectangle from fabric **C**.
- Join each **CP** HST to one (1)  $4\frac{1}{2} \times 2\frac{1}{2}$ " rectangle from fabric **C**.
- Join both blocks



DIAGRAM 7

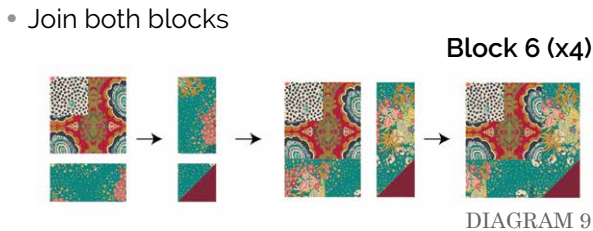
**Block 5 (x8):**

- Take four (8) block 2 and **DP** HST, and sixteen (16)  $4\frac{1}{2} \times 2\frac{1}{2}$ " rectangles from fabric **D**.
- Join each block 2 to one (1)  $4\frac{1}{2} \times 2\frac{1}{2}$ " rectangle from fabric **D**.
- Join each **DP** HST to one (1)  $4\frac{1}{2} \times 2\frac{1}{2}$ " rectangle from fabric **D**.
- Join both blocks

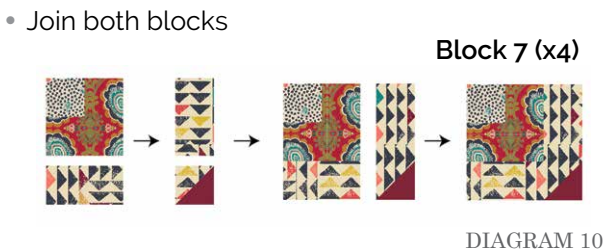


DIAGRAM 8

- **Block 6 (x4):**
- Take four (4) block 2 and **FP** HST, and eight (8)  $4\frac{1}{2} \times 2\frac{1}{2}$ " rectangles from fabric **F**.
- Join each block 2 to one (1)  $4\frac{1}{2} \times 2\frac{1}{2}$ " rectangle from fabric **F**.
- Join each **FP** HST to one (1)  $4\frac{1}{2} \times 2\frac{1}{2}$ " rectangle from fabric **F**.



- **Block 7 (x4):**
- Take four (4) block 2 and **GP** HST, and eight (8)  $4\frac{1}{2} \times 2\frac{1}{2}$ " rectangles from fabric **G**.
- Join each block 2 to one (1)  $4\frac{1}{2} \times 2\frac{1}{2}$ " rectangle from fabric **G**.
- Join each **GP** HST to one (1)  $4\frac{1}{2} \times 2\frac{1}{2}$ " rectangle from fabric **G**.



- **Block 8 (x24):**
- Take twenty four (24) block 2 and **JP** HST, and forty eight (48)  $4\frac{1}{2} \times 2\frac{1}{2}$ " rectangles from fabric **J**.
- Join each block 2 to one (1)  $4\frac{1}{2} \times 2\frac{1}{2}$ " rectangle from fabric **J**.
- Join each **JP** HST to one (1)  $4\frac{1}{2} \times 2\frac{1}{2}$ " rectangle from fabric **J**.



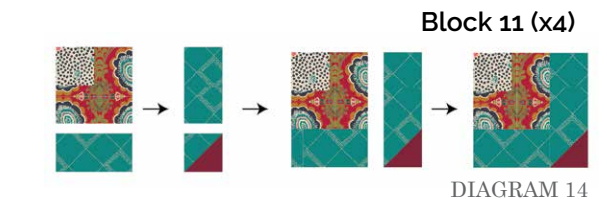
- **Block 9 (x4):**
- Take four (4) block 2 and **KP** HST, and eight (8)  $4\frac{1}{2} \times 2\frac{1}{2}$ " rectangles from fabric **K**.
- Join each block 2 to one (1)  $4\frac{1}{2} \times 2\frac{1}{2}$ " rectangle from fabric **K**.
- Join each **KP** HST to one (1)  $4\frac{1}{2} \times 2\frac{1}{2}$ " rectangle from fabric **K**.



- **Block 10 (x4):**
- Take four (4) block 2 and **LP** HST, and eight (8)  $4\frac{1}{2} \times 2\frac{1}{2}$ " rectangles from fabric **L**.
- Join each block 2 to one (1)  $4\frac{1}{2} \times 2\frac{1}{2}$ " rectangle from fabric **L**.
- Join each **LP** HST to one (1)  $4\frac{1}{2} \times 2\frac{1}{2}$ " rectangle from fabric **L**.



- **Block 11 (x4):**
- Take four (4) block 2 and **MP** HST, and eight (8)  $4\frac{1}{2} \times 2\frac{1}{2}$ " rectangles from fabric **M**.
- Join each block 2 to one (1)  $4\frac{1}{2} \times 2\frac{1}{2}$ " rectangle from fabric **M**.
- Join each **MP** HST to one (1)  $4\frac{1}{2} \times 2\frac{1}{2}$ " rectangle from fabric **M**.





## QUILT TOP

*Sew all rights sides together with 1/4" seam allowance.*

Join the blocks into the following rows:

**Row 1:**

• 8 - 1 - 1 - 8 - 8 - 1 - 1 - 8 - 8 - 1 - 1 - 8

**Row 2:**

• 1 - 11 - 11 - 1 - 1 - 1 - 4 - 4 - 1 - 1 - 5 - 5 - 1

**Row 3:**

• 1 - 11 - 11 - 1 - 1 - 1 - 4 - 4 - 1 - 1 - 5 - 5 - 1

**Row 4:**

• 8 - 1 - 1 - 12 - 12 - 1 - 1 - 1 - 3 - 3 - 1 - 1 - 8

**Row 5:**

• 8 - 1 - 1 - 12 - 12 - 1 - 1 - 1 - 3 - 3 - 1 - 1 - 8

**Row 6:**

• 1 - 5 - 5 - 1 - 1 - 1 - 9 - 9 - 1 - 1 - 13 - 13 - 1

**Row 7:**

• 1 - 5 - 5 - 1 - 1 - 1 - 9 - 9 - 1 - 1 - 13 - 13 - 1

**Row 8:**

• 8 - 1 - 1 - 7 - 7 - 1 - 1 - 1 - 6 - 6 - 1 - 1 - 8

**Row 9:**

• 8 - 1 - 1 - 7 - 7 - 1 - 1 - 1 - 6 - 6 - 1 - 1 - 8

**Row 10:**

• 1 - 10 - 10 - 1 - 1 - 1 - 4 - 4 - 1 - 1 - 8 - 8 - 1

**Row 11:**

• 1 - 10 - 10 - 1 - 1 - 1 - 4 - 4 - 1 - 1 - 8 - 8 - 1

**Row 12:**

• 8 - 1 - 1 - 8 - 8 - 1 - 1 - 1 - 8 - 8 - 1 - 1 - 8

• Join the rows following diagram 17.

• **Block 12 (x4):**

- Take four (4) block 2 and **NP** HST, and eight (8)  $4\frac{1}{2} \times 2\frac{1}{2}$ " rectangles from fabric **N**.
- Join each block 2 to one (1)  $4\frac{1}{2} \times 2\frac{1}{2}$ " rectangle from fabric **N**.
- Join each **NP** HST to one (1)  $4\frac{1}{2} \times 2\frac{1}{2}$ " rectangle from fabric **N**.
- Join both blocks

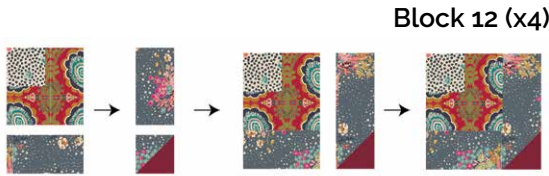


DIAGRAM 15

• **Block 13 (x4):**

- Take four (4) block 2 and **OP** HST, and eight (8)  $4\frac{1}{2} \times 2\frac{1}{2}$ " rectangles from fabric **O**.
- Join each block 2 to one (1)  $4\frac{1}{2} \times 2\frac{1}{2}$ " rectangle from fabric **O**.
- Join each **OP** HST to one (1)  $4\frac{1}{2} \times 2\frac{1}{2}$ " rectangle from fabric **O**.
- Join both blocks



DIAGRAM 16



Row 1



Row 2



Row 3



Row 4



Row 5



Row 6



Row 7



Row 8



Row 9



Row 10



Row 11



Row 12



DIAGRAM 17

## QUILT ASSEMBLY

*Sew rights sides together.*

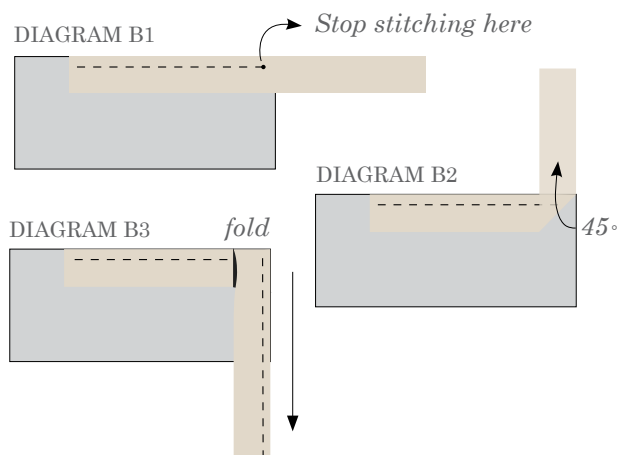
- Place BACKING FABRIC on a large surface wrong side up. Stretch it with masking tape against that surface.
- Place BATTING on top of backing fabric.
- Place TOP on top of the batting with right side facing up. Smooth away wrinkles using your hands.
- Pin all layers together and baste with basting thread, using long stitches. You can also use safety pins to join the layers.
- Machine or hand quilt starting at the center and working towards the corners. Remember that quilting motifs are a matter of personal preference. Have fun choosing yours!
- After you finished, trim excess of any fabric or batting, squaring the quilt to proceed to bind it.

## BINDING

*Sew rights sides together.*

- Cut enough strips  $1\frac{1}{2}$ " wide by the width of the fabric **H** to make a final strip 298" long. Start sewing the binding strip in the middle of one of the sides of the quilt, placing the strip right side down and leaving an approximated 5" tail. Sew with  $\frac{1}{4}$ " seam allowance (using straight stitch), aligning the strip's raw edge with the quilt top's raw edge.
- Stop stitching  $\frac{1}{4}$ " before the edge of the quilt (DIAGRAM B 1). Clip the threads. Remove the quilt from under the machine presser foot. Fold the strip in a motion of  $45^\circ$  and upward, pressing with your fingers (DIAGRAM B2). Hold this fold with your finger, bring the strip down in line with the next edge, making a horizontal fold that aligns with the top edge of the quilt (DIAGRAM B3). Start sewing at  $\frac{1}{4}$ " of the border, stitching all the layers. Do the same in the four corners of the quilt.

- Stop stitching before you reach the last 5 or 6 inches. Cut the threads and remove the quilt from under the machine presser foot. Lay the loose ends of the binding flat along the quilt edge, folding the ends back on themselves where they meet. Press them together to form a crease. Using this crease as the stitching line, sew the two open ends of the binding with right sides together (you can help yourself marking with a pencil if the crease is difficult to see).
- Trim seam to  $\frac{1}{4}$ " and press open. Complete the sewing. Turn binding to back of the quilt, turn raw edge inside and stitch by hand using blind stitch.



[artgalleryfabrics.com](http://artgalleryfabrics.com)

NOTE: While all possible care has been taken to ensure the accuracy of this pattern, We are not responsible for printing errors or the way in which individual work varies.

Please read instructions carefully before starting the construction of this quilt. If desired, wash and iron your fabrics before starting to cut.