



by AGF

x x x x x x x x x x x x x x x x x x

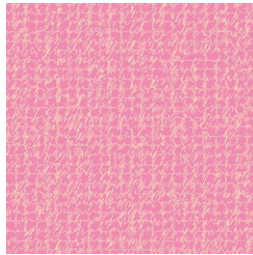
# SUGAR TOWN

QUILT DESIGNED BY AGFstudio

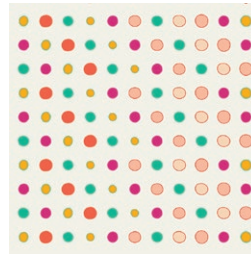
## Joyful FUSION



FUS-J-300  
BEYOND BLISS JOYFUL



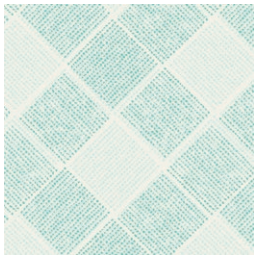
FUS-J-301  
SCRIPT JOYFUL



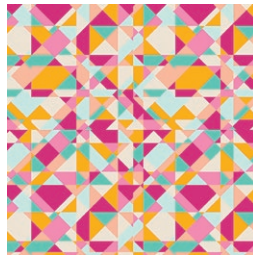
FUS-J-302  
BONBONS JOYFUL



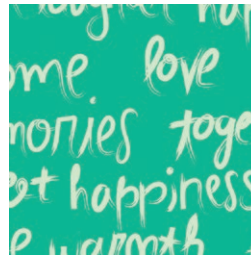
FUS-J-303  
ORCHARD BLOSSOM JOYFUL



FUS-J-304  
SANDBOX JOYFUL



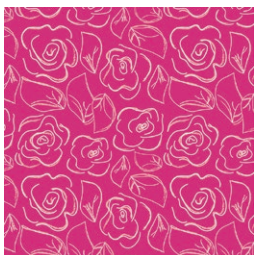
FUS-J-305  
GO-GO LONDON JOYFUL



FUS-J-306  
TO LIVE BY JOYFUL



FUS-J-307  
FLYAWAY PETALUMS JOYFUL



FUS-J-308  
LET'S CHALK JOYFUL



FUS-J-309  
VIVACIOUS MARVEL JOYFUL





Fabric <b>A</b>	FUS-J-300	$\frac{5}{8}$ yd.
Fabric <b>B</b>	FUS-J-301	$\frac{5}{8}$ yd.
Fabric <b>C</b>	FUS-J-302	$1\frac{3}{4}$ yd.
Fabric <b>D</b>	FUS-J-303	$2\frac{1}{2}$ yd.
Fabric <b>E</b>	FUS-J-304	$\frac{1}{2}$ yd.
Fabric <b>F</b>	FUS-J-306	1 yd.
Fabric <b>G</b>	FUS-J-307	$\frac{1}{2}$ yd.
Fabric <b>H</b>	FUS-J-308	$\frac{7}{8}$ yd.
Fabric <b>I</b>	PE-411	1 yd.
Fabric <b>J</b>	PE-433	$\frac{1}{4}$ yd.
Fabric <b>K</b>	PE-424	$\frac{1}{4}$ yd.
Fabric <b>L</b>	PE-459	$\frac{1}{4}$ yd.

Fabric **F** FUS-J-306 ¼ yd.

FUS-J-305 5yd.

*1/4" seam allowances are included.  
WOF means width of fabric.*

- Seven (7)  $2\frac{1}{2}$ " x WOF strips from fabrics **A** and **B** Sub-cut into twelve  $2\frac{1}{2}$ " x 12" strips and twelve  $2\frac{1}{2}$ " x 8" strips.
- Twenty four (24)  $2\frac{1}{2}$ " x WOF strips from fabric **C** Sub-cut into Forty  $2\frac{1}{2}$ " x 12" strips and forty  $2\frac{1}{2}$ " x 8" strips.
- Thirty four (34)  $2\frac{1}{2}$ " x WOF strips from fabric **D** Sub-cut into Forty  $2\frac{1}{2}$ " x  $12\frac{1}{2}$ " strips and forty  $2\frac{1}{2}$ " x 16" strips.
- Five (5)  $2\frac{1}{2}$ " x WOF strips from fabrics **E** and **G** Sub-cut into twelve  $2\frac{1}{2}$ " x 8" strips and twelve  $2\frac{1}{2}$ " x 4" strips.
- Twelve (12)  $2\frac{1}{2}$ " x WOF strips from fabrics **F** and **H** Sub-cut into twelve  $2\frac{1}{2}$ " x 12" strips and twelve  $2\frac{1}{2}$ " x 16" strips.



- Twelve (12) 2½" x WOF strip from fabric **I** Sub-cut into forty 2½" x 4" strips and forty 2½" x 8" strips.
- Two (2) 4" x WOF strips from fabric **J** Sub-cut into twenty 4" squares.
- Six (6) 4" squares from fabrics **L** and **K**

*Sew all rights sides together with ¼"seam allowance.*

- Take one (1) 4'x 4' square from fabric J and two (2) 4' x 2½' rectangles from fabric I.
- Join them: I > J > I



DIAGRAM 1

- Take two (2) 8' x 2½' rectangles from fabric I.
- Join them: I > Block > I

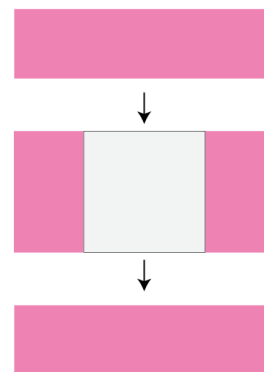


DIAGRAM 2

- Take two (2) 8' x 2½' rectangles from fabric **C**
- Join them: **C** > Block > **C**



- Take two (2) 8' x 2½' rectangles from fabric **G**
- Join them: **G** > Block > **G**

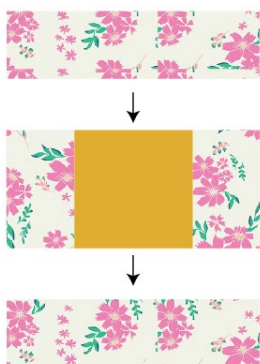


DIAGRAM 9

- Take two (2) 8' x 2½' rectangles from fabric **B**.
- Join them: **B** > Block > **B**



DIAGRAM 10

- Take two (2) 12' x 2½' rectangles from fabric **B**.
- Join them: **B** > Block > **B**

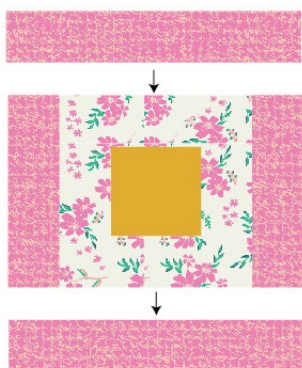


DIAGRAM 11

- Take two (2) 12' x 2½' rectangles from fabric **H**.
- Join them: **H** > Block > **H**



DIAGRAM 12

- Take two (2) 16' x 2½' rectangles from fabric **H**.
- Join them: **H** > Block > **H**

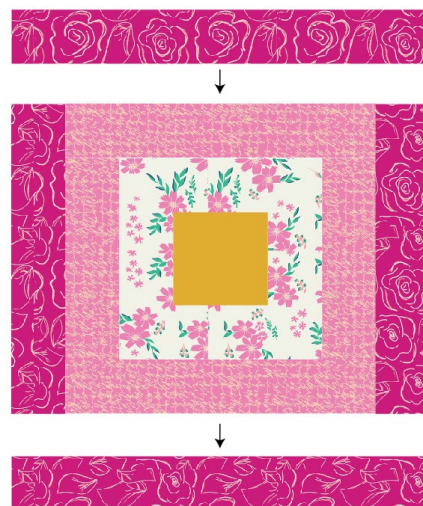


DIAGRAM 13

- Block B, make six (6)



DIAGRAM 14

Block B  
X 6

XX

- 

DIAGRAM 15

- 

DIAGRAM 16

- 

DIAGRAM 17

- 

DIAGRAM 18

- 

DIAGRAM 19

- 

DIAGRAM 20

- 

Block C  
x 6

DIAGRAM 21

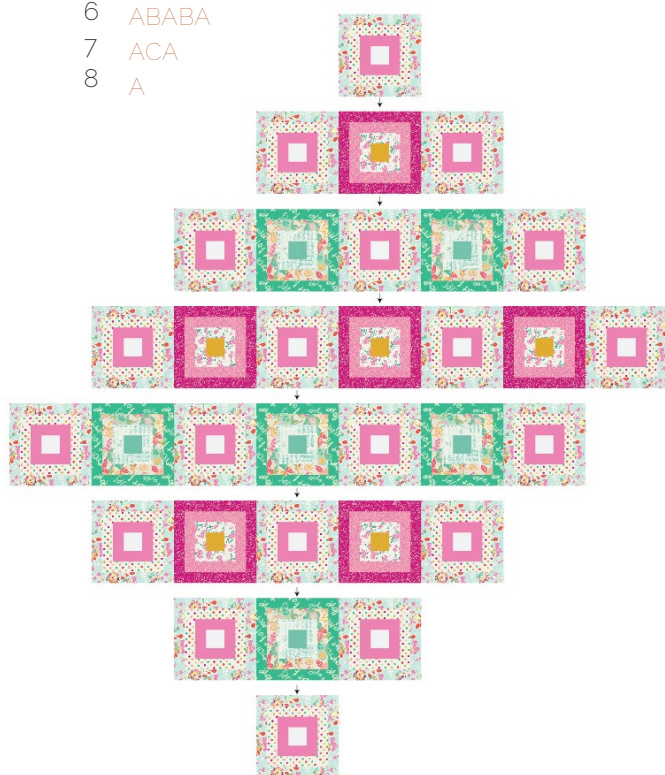
## ASSEMBLING THE TOP

*Sew all rights sides together with 1/4" seam allowance. Press open.*

- This quilt top is an on point quilt.
- To accomplish this you will need to attach eight rows, each of them will have a different amount of blocks.
- Follow Diagram 22 as a reference for block placement.
- Start by joining the blocks to create the rows..
- Attach the rows together paying close attention to their alignment, since not all of them are aligned in the center.

Row # Block order

- 1 A
- 2 ABA
- 3 ACACA
- 4 ABABABA
- 5 ACACACA
- 6 ABABA
- 7 ACA
- 8 A



- Turn the quilt in a 45° angle and trim it to end up with a 66" x 88" rectangle.



## QUILT ASSEMBLY

*Sew rights sides together.*

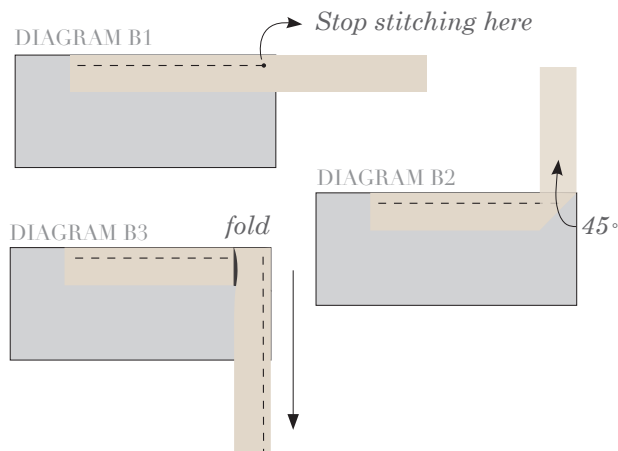
- Place BACKING FABRIC on a large surface wrong side up. Stretch it with masking tape against that surface.
- Place BATTING on top of backing fabric.
- Place TOP on top of the batting with right side facing up. Smooth away wrinkles using your hands.
- Pin all layers together and baste with basting thread, using long stitches. You can also use safety pins to join the layers.
- Machine or hand quilt starting at the center and working towards the corners. Remember that quilting motifs are a matter of personal preference. Have fun choosing yours!
- After you finished, trim excess of any fabric or batting, squaring the quilt to proceed to bind it.

## BINDING

*Sew rights sides together.*

- Cut enough strips  $1\frac{1}{2}$ " wide by the width of the fabric **F** to make a final strip 310" long. Start sewing the binding strip in the middle of one of the sides of the quilt, placing the strip right side down and leaving an approximated 5" tail. Sew with  $\frac{1}{4}$ " seam allowance (using straight stitch), aligning the strip's raw edge with the quilt top's raw edge.
- Stop stitching  $\frac{1}{4}$ " before the edge of the quilt (DIAGRAM B 1). Clip the threads. Remove the quilt from under the machine presser foot. Fold the strip in a motion of  $45^\circ$  and upward, pressing with your fingers (DIAGRAM B2). Hold this fold with your finger, bring the strip down in line with the next edge, making a horizontal fold that aligns with the top edge of the quilt (DIAGRAM B3). Start sewing at  $\frac{1}{4}$ " of the border, stitching all the layers. Do the same in the four corners of the quilt.

- Stop stitching before you reach the last 5 or 6 inches. Cut the threads and remove the quilt from under the machine presser foot. Lay the loose ends of the binding flat along the quilt edge, folding the ends back on themselves where they meet. Press them together to form a crease. Using this crease as the stitching line, sew the two open ends of the binding with right sides together (you can help yourself marking with a pencil if the crease is difficult to see).
- Trim seam to  $\frac{1}{4}$ " and press open. Complete the sewing. Turn binding to back of the quilt, turn raw edge inside and stitch by hand using blind stitch.



[artgalleryfabrics.com](http://artgalleryfabrics.com)

NOTE: While all possible care has been taken to ensure the accuracy of this pattern, We are not responsible for printing errors or the way in which individual work varies.

Please read instructions carefully before starting the construction of this quilt. If desired, wash and iron your fabrics before starting to cut.