

X
X
X
X
X
X
X
X
X
X
X
X

A vibrant, handcrafted tote bag is the central focus, set against a solid, bright red background. The bag features a complex pattern of vertical stripes in shades of blue, teal, and white, interspersed with floral and geometric motifs. A wide, grey fabric strap is attached to the top. Two large, bright yellow daisy-like flowers are positioned on either side of the bag, adding to the cheerful aesthetic. The overall composition is clean and modern, highlighting the bag's design and color palette.

A DIVISION OF AGF

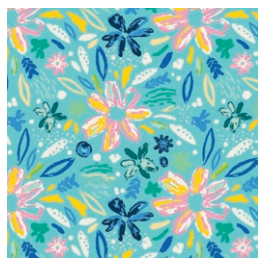
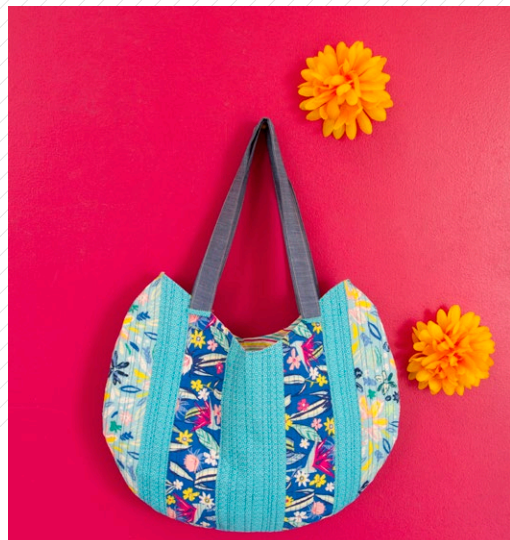
XXXXXXXXXXXXXXXXXXXXXXXXXXXX

Sand bag

DESIGNED BY AGFstudio

HELLO Sunshine

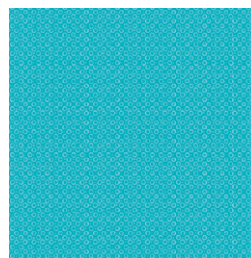
FABRICS DESIGNED BY KATIE SKOOG



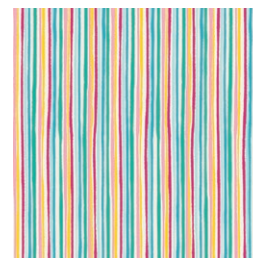
HLS-66950
SUMMER DAZE



HLS-66954
TROPIC LIKE IT'S HOT



HLS-66959
CRYSTAL BUBBLES



HLS-66960
SUNLIT STRIPES

ADDITIONAL BLENDERS FOR THIS PROJECT



DEN-S-2003
AFTERNOON SAIL



FEEL THE DIFFERENCE

© 2020 Courtesy of Art Gallery Quilts LLC. All Rights Reserved.

Sand bag

FINISHED SIZE | 16½" x 12"

FABRIC REQUIREMENTS

Fabric A	HLS-66950	¼ yd.
Fabric B	HLS-66954	¼ yd.
Fabric C	HLS-66959	⅓ yd.
Fabric D	HLS-66960	½ yd.
Fabric E	DEN-S-2003	¼ yd.

CUTTING DIRECTIONS

¼" seam allowances are included.
WOF means width of fabric.

- Four (4) 18" x 4" strips from fabric **A**.
- Four (4) 18" x 3" strips from fabric **B**.
- Two (2) 18" x 4" strips from fabric **C**.
- Four (4) 18" x 2" strips from fabric **C**.
- Two (2) Templates from fabric **D**.
- One (1) WOF x 1½" from fabric **E**, subcut in half.

CONSTRUCTION

Sew all rights sides together with ¼" seam allowance.
WSF means wrong side of fabric.
RSF means right side of fabric.

- Begin with two 18" x 4" strips from fabric **A**, two 18" x 3" strips from fabric **B**, two 18" x 3" strips from fabric **C** and one 18" x 4" strips from fabric **C**.
- Attach the strips in the order.
- Repeat the same procedure one more time to end up with two **ACBCBCA** strip sets.

XXXXXXXXXXXXXXXXXXXXXXXXXXXXXXXXXXXX



DIAGRAM 1

- Pair and align the **ACBCBCA** strip sets and cut your template on top to get the front and back of the bag.
- Add batting to the front and back pieces and quilt as desire.

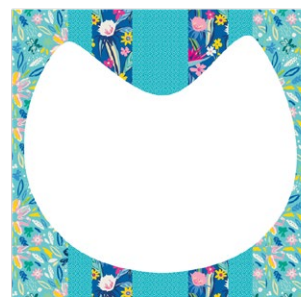


DIAGRAM 2

- Pair the front and back of the bag RSF together, align and sew all the way from corner to corner.



DIAGRAM 3

- Now, bring the lining pieces, two (2) Templates from fabric **D**.
- If you would like to give more body to your bag iron some medium weight interfacing to the WSF of the lining pieces.
- Place the lining pieces one on top of the other right side of fabric facing each other, align them and sew the two lining pieces together leaving a 3" opening on the bottom.

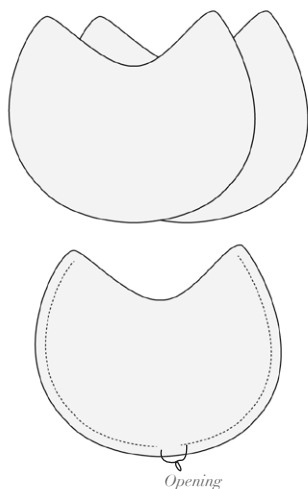


DIAGRAM 4

- Now, bring the 1½" strips from fabric **E** for the hangers. and some clothesline rope.
- Fold fabric **E** strips in half (long side) and sew the long side all the way down to construct a strip to wrapped the clothesline rope.
- Turn the strip inside over and insert the clothesline rope.
- Using fabric pins, place the handle strips on top of the exterior fabric and pin them in place.



DIAGRAM 5

- Insert the exterior fabric inside the lining, RSF together.
- Handles should be in-between the two fabrics.
- Sew the top and turn the handbag inside out through the opening left on the lining.
- Hand-stitch the opening.

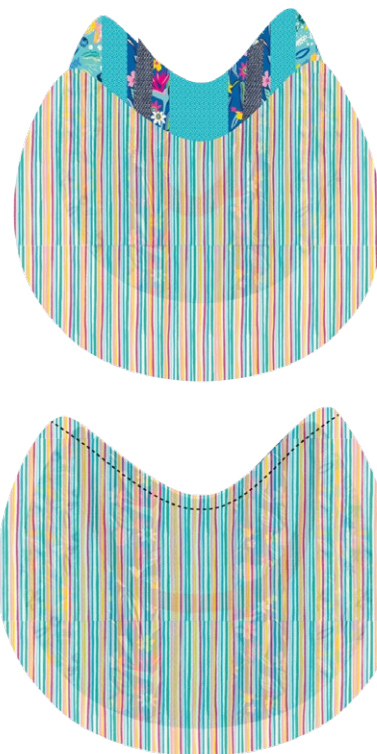


DIAGRAM 6

- Iron Press the handbag after you turn it over.
- Top stitch the handbag top.
- Hand-stitch the pompoms on the front.
- Voila!



DIAGRAM 7



artgalleryfabrics.com

NOTE: While all possible care has been taken to ensure the accuracy of this pattern, We are not responsible for printing errors or the way in which individual work varies.

Please read instructions carefully before starting the construction of this quilt. If desired, wash and iron your fabrics before starting to cut.

© 2020 Courtesy of Art Gallery Quilts LLC. All Rights Reserved.

TEMPLATE

- Tape the top and bottom pattern together.

