

X
X
X
X
X
X
X
X
X
X
X
X

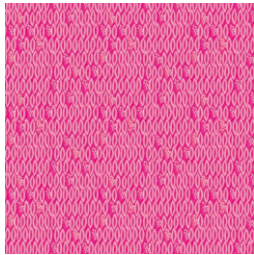
A top-down view of a vibrant, multi-colored hexagonal patchwork placemat on a bright blue background. The placemat features a central hexagon with a yellow floral pattern, surrounded by other hexagons in shades of pink, teal, and blue, some with floral prints and others with solid colors or stripes. A hand is holding a small white dish with an orange slice. Another white dish with orange slices sits on the placemat. A small vase with white flowers is also visible.

Picnic Flora

DESIGNED BY AGFstudio

HELLO Sunshine

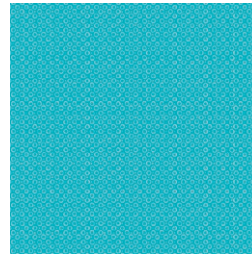
FABRICS DESIGNED BY KATIE SKOOG



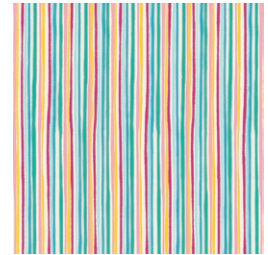
HLS-66953
SWEET SLIDE OF WATERMELON



HLS-66954
TROPIC LIKE IT'S HOT



HLS-66959
CRYSTAL BUBBLES



HLS-66960
SUNLIT STRIPES



HLS-66961
SUNNY DAYS AHEAD



ADDITIONAL BLENDERS FOR THIS PROJECT



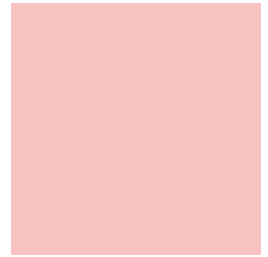
PE-434
TRANQUIL WATERS



PE-439
RASPBERRY ROSE



PE-402
COZUMEL BLUE



PE-420
CRYSTAL PINK

PICNIC Flora

FINISHED SIZE | 27" x 28"

FABRIC REQUIREMENTS

Fabric A	HLS-66953	⅓ yd.
Fabric B	HLS-66954	¼ yd.
Fabric C	HLS-66959	⅛ yd.
Fabric D	HLS-66960	⅛ yd.
Fabric E	HLS-66961	1 yd.
Fabric F	PE-434	¼ yd.
Fabric G	PE-439	⅓ yd.
Fabric H	PE-402	¼ yd.
Fabric I	PE-420	¼ yd.

BACKING FABRIC
HLS-66961 (Included)

CUTTING DIRECTIONS

¼" seam allowances are included.
WOF means width of fabric.

- Four (4) 2 ½" x WOF strips from fabrics **A** and **G**.
- Six (6) Hexie Template from fabric **B**.
- One (1) 1 ½" x WOF strip from fabrics **B**, **C**, and **F**.
- Two (2) 1 ½" x WOF strips from fabric **D**.
- One (1) Hexie Template from fabric **E**.
- One (1) 33" square from fabric **E**.
- One (1) 2 ½" x WOF strip from fabrics **F** and **H**.
- Three (3) 1 ½" x WOF strips from fabric **H**.
- Two (2) 2 ½" x WOF strips from fabric **I**.

CONSTRUCTION

Sew all rights sides together with ¼" seam allowance.

- Construct three different log cabin combinations around the Hexie Template.

Center Hexie Block

- For the center block, take one Hexie Template from fabric **E**, one (1) 1 ½" x WOF strip from fabrics **C** and **F**, one (1) 2 ½" x WOF strip from fabrics **H** and **F**.
- Sew the 1 ½" strip from fabric **C** on the top left hexie edge.



DIAGRAM 1

- Use your clear ruler and rotary cutter to trim the **C** strip, aligning the ruler edge with the Hexie straight up and horizontally.

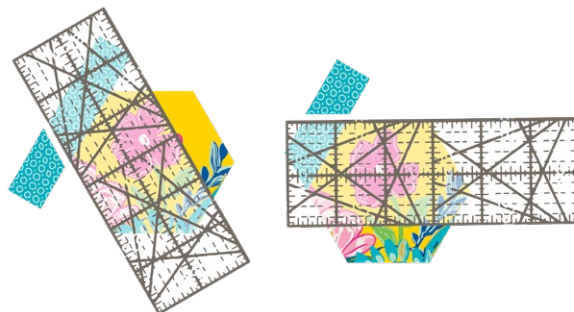


DIAGRAM 2

- Now, bring the 1 ½" strip from fabrics **F** and sew the strip from on the top edge of the hexie.
- Keep trimming the excess strip ends.



DIAGRAM 3

- Keep adding the **C** and **F** strips on the remaining hexie edges going clockwise, alternating the fabric strips.

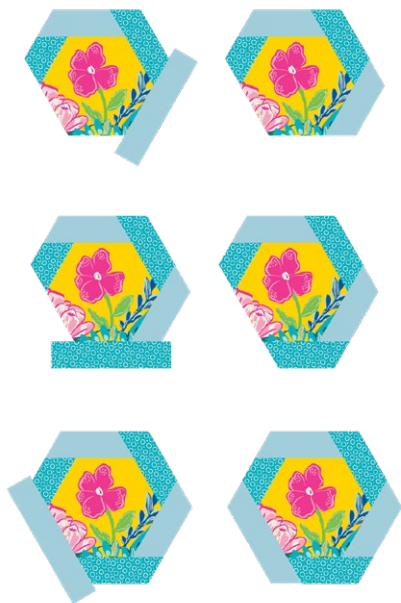


DIAGRAM 4

- Now bring the 2 ½" x WOF strips from fabrics **H** and **F**.
- Start sewing the 2 ½" strip from fabric **F** on the top left hexie edge and trim.
- Then, attach the 2 ½" strip from fabric **H** on the top edge of the hexie.
- Keep adding the **F** and **H** strips on the remaining hexie edges going clockwise, alternating the fabric strips until you are done with all the Hexie edges..

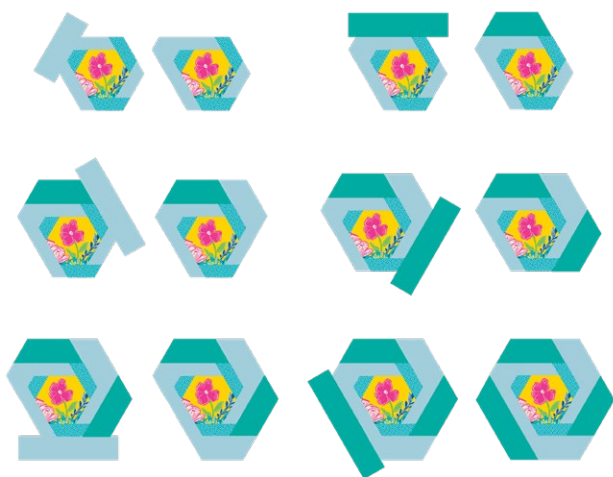


DIAGRAM 5

Hexie A Block

- For the **A** block, take one Hexie Template from fabric **B**, one (1) 1 ½" x WOF strip from fabrics **B**, **D** and **H**, one (1) 2 ½" x WOF strip from fabrics **A**, **G** and **I**.
- Start attaching the 1 ½" strips from fabrics **B**, **D** and **H** to the hexie template as shown in the diagram below.



DIAGRAM 6

- Then attach the 2 ½" strips from fabrics **A**, **G** and **I** to the hexie template as shown in the diagram below.
- Make a total of three **A** block combination in order to complete the top.

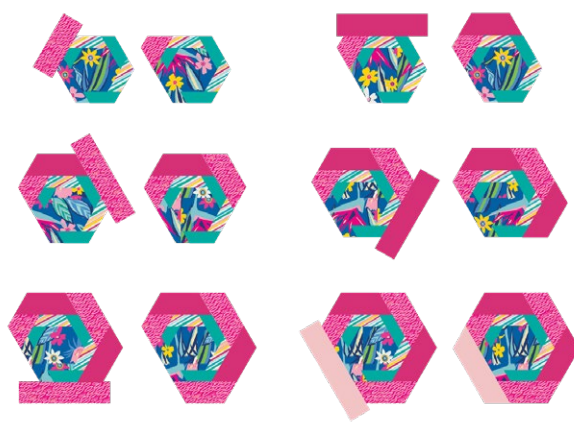


DIAGRAM 7

Hexie B Block

- For the **B** block, take one Hexie Template from fabric **B**, one (1) 1 ½" x WOF strip from fabrics **B**, **D** and **H**, one (1) 2 ½" x WOF strip from fabrics **A**, **G** and **I**.
- Start attaching the 1 ½" strips from fabrics **B**, **D** and **H** to the hexie template as shown in the diagram below.



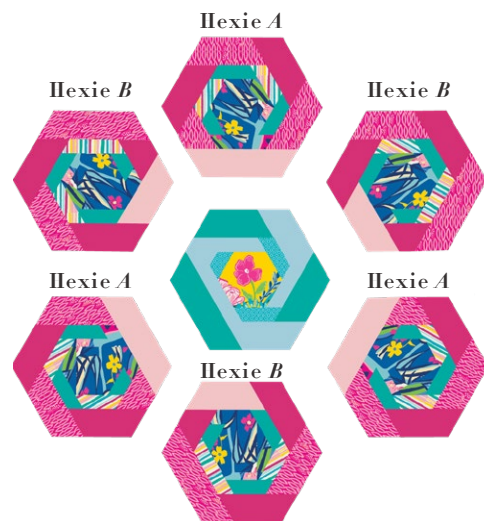
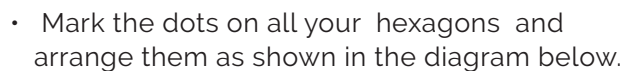
-

DIAGRAM 9

TOP ASSEMBLY

Sew rights sides together.

- To sew your hexies together mark a dot at the $\frac{1}{4}$ " line in each angle of the hexagon. This is easy to do if you trace the hexagon shape onto a piece of cardboard.
- Draw the seam allowances all the way around the cardboard, $\frac{1}{4}$ " from the edge.
- Draw the lines from edge to edge so that they overlap at the angles, at the point where the lines overlap, use a pin or awl and puncture a small hole.
- Use this hole for marking the seam allowance dot on the wrongside of the fabric hexagon



- Sew three hexie columns together, to attach each hexie, place right sides together, being sure to align the straight of grain.
- Sew the seam, beginning and ending at the dot (backstitch to secure the stitching at each end).
- Do not sew past the dot in either direction.
- Each column of hexagons will be sewn together in this manner.
- Press open.



- Sew the columns together by laying them right sides together and aligning the bias edges.
- Stitch, beginning and ending $\frac{1}{4}$ " from the edge as you did in the previous step.
- Rotate the hexi to align the next edge and sew together.
- You will sew each side with a separate seam because you must start and stop $\frac{1}{4}$ " from the edges in order for the patches to lay flat.



- Add batting and quilt as desire.
- Then bring the 33" square from fabric **E** and use your table runner top to trace it on top of the **E** square for the backing.
- When you are done tracing it, cut it and sew all the way around backing and top right sides of fabric facing together, but leave a 3" opening to turn the piece right side over.
- Turn it over and handstitch the 3" opening.
- Top stitch around the table runner.
- Voila!



artgalleryfabrics.com

NOTE: While all possible care has been taken to ensure the accuracy of this pattern, We are not responsible for printing errors or the way in which individual work varies.

Please read instructions carefully before starting the construction of this quilt. If desired, wash and iron your fabrics before starting to cut.

© 2020 Courtesy of Art Gallery Quilts LLC. All Rights Reserved.

