

## A quilt square with a central starburst design. The starburst is composed of magenta triangles and teal squares. The background of the square is a teal fabric with a repeating geometric pattern. The square is surrounded by a wide border made of teal and brown geometric patterns.



XXXXXXXXXXXXXXXXXXXXXXXXXXXX





DESIGNED BY AGFstudio



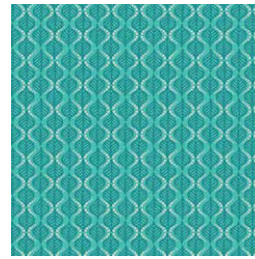
# MARRAKESH FUSION



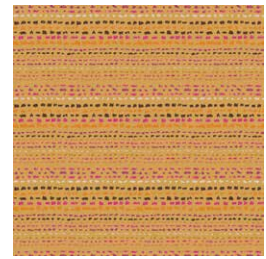
**FUS-M-2000**  
EXOTIC FLORA MARRAKESH  
*by Pat Bravo*



**FUS-M-2002**  
BRIT BOUTIQUE MARRAKESH  
*by Pat Bravo*



**FUS-M-2003**  
TERRA STAMPS MARRAKESH  
*by AGF Studio*



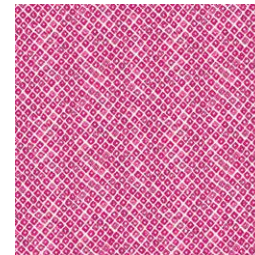
**FUS-M-2005**  
TRAVELER MARRAKESH  
*by Sharon Holland*



**FUS-M-2006**  
TREASURED MARRAKESH  
*by April Rhodes*



**FUS-M-2007**  
ZANAFI MARRAKESH  
*by Katarina Roccella*



**FUS-M-2008**  
SEEDS OF MARRAKESH  
*by Katarina Roccella*



**FUS-M-2009**  
PRIMA FLORA MARRAKESH  
*by Bari J.*



## ADDITIONAL BLENDERS FOR THIS PROJECT



FE-504  
SAND



FE-518  
BALLERINA



FE-522  
COOKIE DOUGH



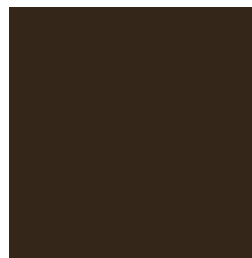
FE-536  
FUCHSIA



FE-539  
ESMERALDA



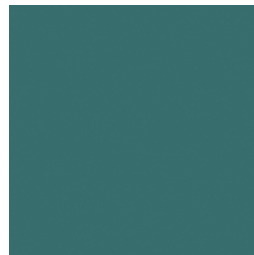
FE-424  
MIRAGE BLUE



FE-429  
COFFEE BEAN



FE-439  
RASPBERRY ROSE



FE-463  
ZAMBIA STONE



FE-485  
RAW GOLD



FINISHED SIZE | 12" x 12"

## FABRIC REQUIREMENTS

### Block 1

Fabric <b>A</b>	FUS-M-2003	F8
Fabric <b>B</b>	FE-539	F8
Fabric <b>C</b>	FUS-M-2000	F8
Fabric <b>D</b>	PE-485	F8
Fabric <b>E</b>	PE-439	F8

### Block 2

Fabric <b>F</b>	FUS-M-2009	F8
Fabric <b>G</b>	FE-504	F8
Fabric <b>H</b>	FUS-M-2005	F8
Fabric <b>I</b>	PE-429	F8
Fabric <b>J</b>	PE-424	F8

### Block 3

Fabric <b>E</b>	PE-439	F8
Fabric <b>I</b>	PE-429	F8
Fabric <b>K</b>	FUS-M-2007	¼ yd.
Fabric <b>L</b>	FE-522	F8
Fabric <b>M</b>	FUS-M-2006	F8

### Block 4

Fabric <b>N</b>	FUS-M-2008	F8
Fabric <b>O</b>	FE-518	F8
Fabric <b>P</b>	FUS-M-2002	F8
Fabric <b>Q</b>	FE-536	F8
Fabric <b>R</b>	PE-463	F8

## CUTTING DIRECTIONS

¼" seam allowances are included.  
WOF means width of fabric.

- Two (2) 3 ⅞" x 3 ⅞" squares from Fabrics **A, F, N**
- Four (4) 2" x 2" squares from Fabrics **A, C, F, H, K, M, N**
- Four (4) 3 ½" x 3 ½" squares from Fabrics **A, F, K, N**
- Twenty four (24) 2" x 2" squares from Fabrics **B, G, L, O**
- Four (4) 2 ¾" x 2 ¾" squares from Fabrics **C, D, E, H, I, M, P, Q**
- Four (4) 3 ½" x 2" rectangles from Fabrics **C, H, M, P**
- One (1) 3 ½" x 3 ½" square from Fabrics **C, H, M, P**
- Eight (8) 2" x 2" squares from Fabrics **D, J, R**
- Sixteen (16) 2" x 2" squares from Fabrics **E, I**
- Four (4) 3 ⅞" x 3 ⅞" squares from Fabric **K**

## CONSTRUCTION

Sew all rights sides together with ¼" seam allowance.

### Block 1 assembly

#### HST construction

- Take (4) Fabric **C** and **D** 2 ¾" x 2 ¾" squares and place them right sides together.
- Draw a line diagonally corner to corner using a mechanical pencil or Frixion pen.
- Stitch at a ¼" from each side of the drawn line.
- Cut the pieces apart along the marked diagonal line.
- Press open and trim to a 2" x 2" square.
- You should have eight (8) **C-D** HST's.

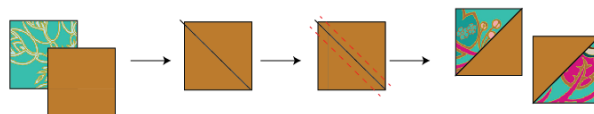


DIAGRAM 1



- Join one (1) 2" x 2" square from Fabric **A**, one (1) 2" x 2" square from Fabric **B** and one **C-D** hst following the diagram below.



DIAGRAM 2

- Join one (1) 2" x 2" square from Fabric **B** on the left side of Fabric **C** 2" x 2" square.
- Sew and stop at a 1/4" before the edge of the fabric, following the diagram below (if it's best, mark a small dot at a 1/4" seam allowance for guidance).



DIAGRAM 3

- Take one (1) 2" x 2" square from Fabric **B** placing right sides together with the previous unit.
- Sew the second 2" x 2" square from Fabric **B** following the diagram below.
- Press seams carefully.



DIAGRAM 4

- Now, take one (1) 3 7/8" x 3 7/8" square from Fabric **A** and cut the diagonal.



DIAGRAM 5

- Setting aside one half of the unit, take the other half pieces and place it on top of your assembled piece, right sides together.
- Sew at a 1/4".
- Press open and trim excess fabric.

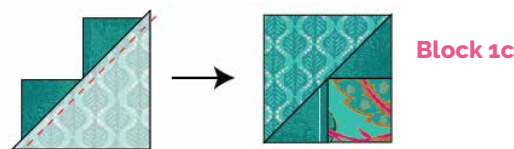


DIAGRAM 6

- Now, join (1) 2" x 2" square from Fabric **B** and (1) **C-D** hst, following the diagram below.



DIAGRAM 7

- Join the assembled Bloc 1d on the bottom of Block 1c following the diagram below.



DIAGRAM 8

- Assemble your Block 1 following the diagram below.



- Repeat Block 1 instructions in order to create a total of 4 blocks following the diagram below.



DIAGRAM 9

## Block 2 assembly

- Take one (1)  $3\frac{1}{2}$ " x  $3\frac{1}{2}$ " square from Fabric **A**, two (2)  $2$ " x  $2$ " squares from Fabrics **D** and two (2)  $2$ " x  $2$ " squares from Fabric **E**.
- Align one (1)  $2$ " x  $2$ " square from Fabric **D** at one corner of Fabric **A**, right sides together.
- Sew on the diagonal and trim excess fabric.
- Repeat the same process with (1) square from Fabric **D** and (2) squares from Fabric **E** following the diagram below.

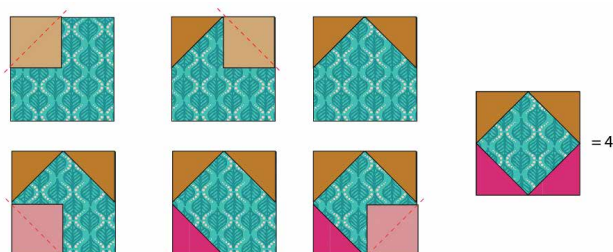


DIAGRAM 10

## Flying Geese Construction

- Take one (1)  $3\frac{1}{2}$ " x  $2$ " rectangle from Fabric **C** and place one (1)  $2$ " x  $2$ " square from Fabric **B**, right sides facing, on the right side of the rectangle unit.
- Draw a line diagonally, corner to corner using a mechanical pencil or a Frixion pen.
- Sew along side the diagonal line and trim (to the right of the line) leaving  $\frac{1}{4}$ " of seam allowance.
- Press open.
- Place the other  $2$ " x  $2$ " square from Fabric **B** on the left side of the rectangle unit and repeat.
- Create a total of four (4) **B-C** flying geese.

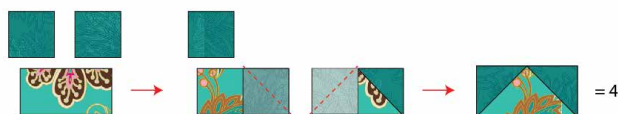


DIAGRAM 11

- To create your Block 2, take one **B-C** flying geese and one block from Diagram 9 and join them, following the diagram below.
- You will have a total of four (4) Block 2.



DIAGRAM 12

- Take all of Block 1 and 2 and one (1)  $3\frac{1}{2}$ " x  $3\frac{1}{2}$ " square from Fabric **C** and follow the diagram below for the block construction.

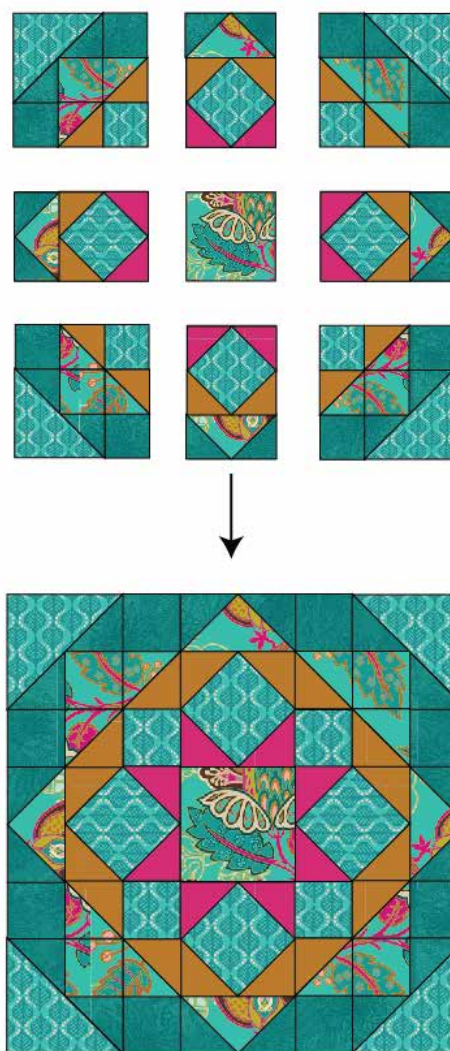


DIAGRAM 13

- Repeat the same instructions in order to complete the other blocks.
- Enjoy!

XX

XX



Please read instructions carefully before starting the construction of this quilt. If desired, wash and iron your fabrics before starting to cut.

artgalleryfabrics.com