

XXXXXX

XXXXXX



XXXXXXXXXXXXXXXXXXXXXXXXXXXX

# ANGLES

A DIVISION OF AGF

# MeowNing

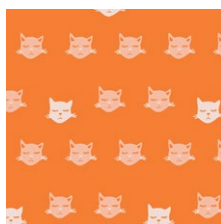
DESIGNED BY AGFstudio

≡OH, MEOW!≡

FABRICS DESIGNED BY Jessica Swift



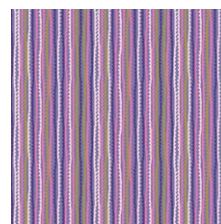
OHM-33440  
KATTALAND FLORA



OHM-33441  
CAT NAP



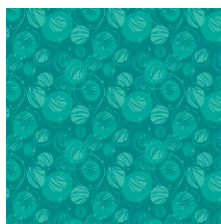
OHM-33442  
KITTEN AROUND



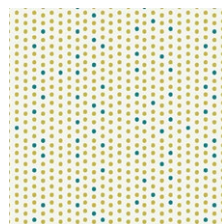
OHM-33443  
UNTANGLED STRINGS



OHM-33448  
CATITUDE SLUMBER



OHM-33445  
CATURDAY FUN



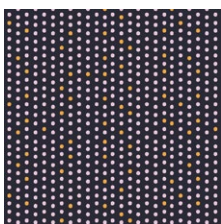
OHM-33446  
PAW-SOME DAY



OHM-33447  
FELINE GOOD



OHM-33449  
MEOWTAIN MEADOWS



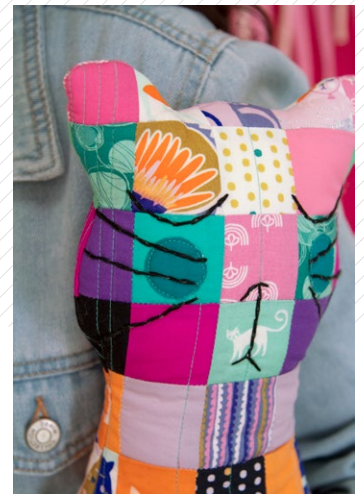
OHM-33451  
PAW-SOME NIGHT



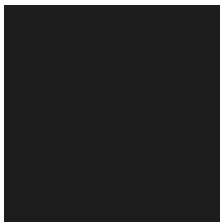
FEEL THE DIFFERENCE © 2020 Courtesy of Art Gallery Quilts LLC. All Rights Reserved.

# MeowNing

DESIGNED BY AGFstudio



## ADDITIONAL BLENDERS FOR THIS PROJECT



PE-413  
CAVIAR



PE-449  
MANDARIN



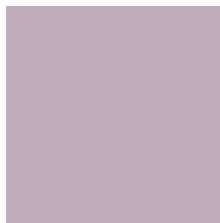
PE-474  
SWEET PINK



PE-475  
VERY BERRY



PE-478  
JADE CREAM



PE-495  
FIELD OF LAVANDER



PE-404  
FESTIVAL FUCHSIA



PE-402  
COZUMEL BLUE



PE-453  
PURPLE PANSY



PE-418  
TILE BLUE



# MeowNing

FINISHED SIZE | 20" x 17"

## FABRIC REQUIREMENTS

Fabric <b>A</b>	OHM-33440	Fat Eight.
Fabric <b>B</b>	OHM-33441	Fat Eight.
Fabric <b>C</b>	OHM-33442	Fat Eight.
Fabric <b>D</b>	OHM-33443	Fat Eight.
Fabric <b>E</b>	OHM-33445	Fat Eight.
Fabric <b>F</b>	OHM-33446	Fat Eight.
Fabric <b>G</b>	OHM-33447	Fat Eight.
Fabric <b>H</b>	OHM-33448	Fat Eight.
Fabric <b>I</b>	OHM-33449	Fat Eight.
Fabric <b>J</b>	OHM-33451	Fat Eight.
Fabric <b>K</b>	PE-413	Fat Eight.
Fabric <b>L</b>	PE-449	Fat Eight.
Fabric <b>M</b>	PE-474	Fat Eight.
Fabric <b>N</b>	PE-475	Fat Eight.
Fabric <b>O</b>	PE-478	Fat Eight.
Fabric <b>P</b>	PE-495	Fat Eight.
Fabric <b>Q</b>	PE-404	Fat Eight.
Fabric <b>R</b>	PE-402	Fat Eight.
Fabric <b>S</b>	PE-453	Fat Eight.
Fabric <b>T</b>	PE-418	Fat Eight.

## CUTTING DIRECTIONS

*¼" seam allowances are included.  
WOF means width of fabric.*

- Four (4) 2" squares from fabrics **A, M, Q** and **R**.
- Ten (10) 2" squares from fabrics **B, D**, and **P**.
- Twelve (12) 2" squares from fabric **C**.
- Eight (8) 2" squares from fabrics **E, F, G, J, K, L, N, O** and **S**.
- Sixteen (16) 2" squares from fabric **H**.
- Twenty (20) 2" squares from fabric **I**.
- One (1) Tail Template from fabric **T**.
- Two (2) Cheeks Template from fabric **T**.

## CONSTRUCTION

*Sew all rights sides together with ¼" seam allowance.*

- Start by Making a Grid patch of squares to cut the cat template on top.
- Make twelve rows with fourteen 2" squares each.
- Follow the diagram below for fabric and rows placement.



DIAGRAM 1

- Join the rows creating the Grid Square Patch.



DIAGRAM 2

- Fold the Grid Square Patch in half and cut the Cat Template on top in order to get the front and back pillow.

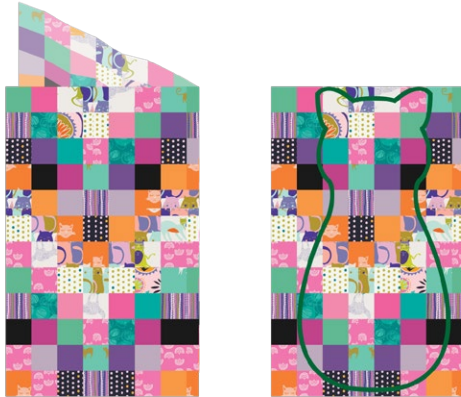


DIAGRAM 3

- Add batting to each Cat and quilt as desired.
- We picked straight lines at different lengths.



DIAGRAM 4

- Bring the cheeks and tail templates and using Steam-A-Seam iron the cheeks in place on top of the front pillow.
- Iron the tail in place on top of the back pillow.
- Top stitch the cheeks and tail to hold them in place.



DIAGRAM 5

- Draw the cat face referring to your template, use a fabric marker to draw on top of the pillow front.
- Use black embroidery thread to trace your drawing.



DIAGRAM 6

- Place the front and back side of the pillow right side of fabric facing each other and sew all the way around the cat with  $\frac{1}{4}$ " seam allowance.
- Leave an opening of 3" wide to be able to turn over the pillow.
- Hand stitch the pillow opening.
- Voila!

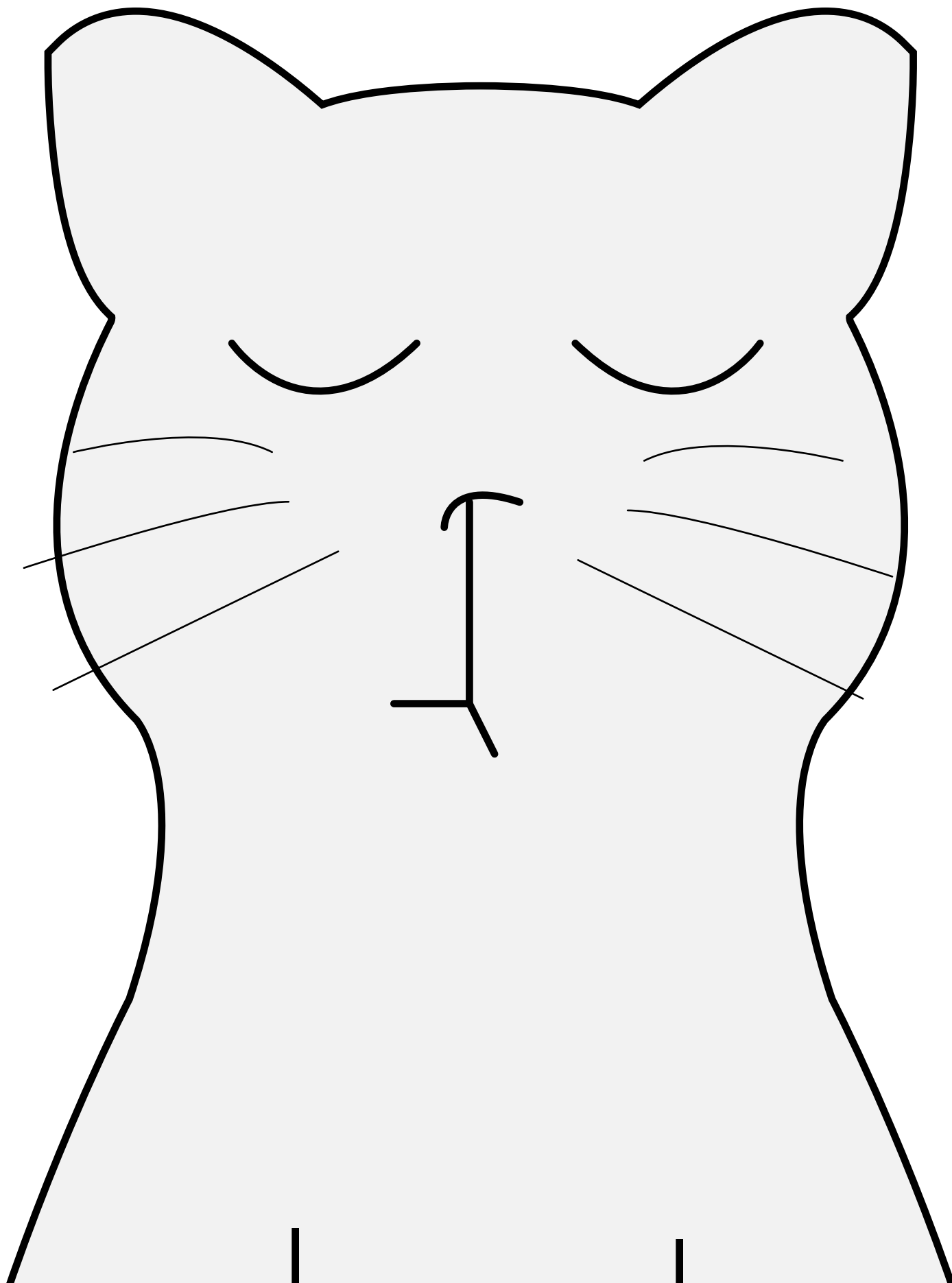


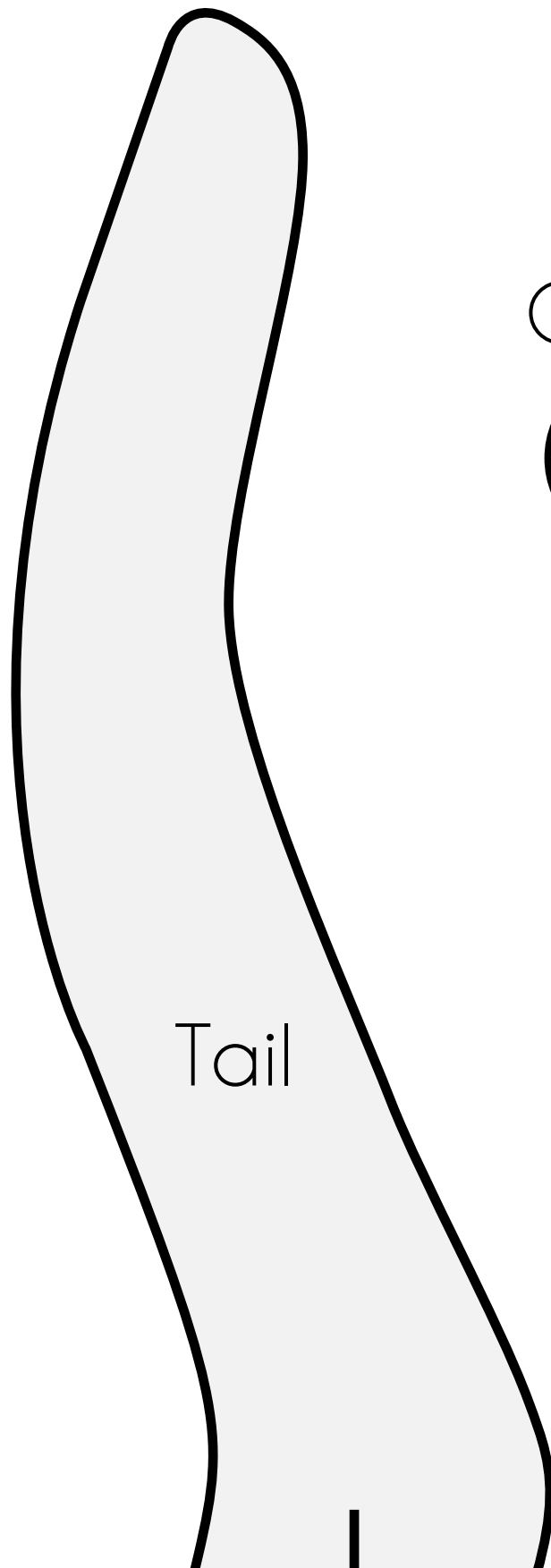
[artgalleryfabrics.com](http://artgalleryfabrics.com)

NOTE: While all possible care has been taken to ensure the accuracy of this pattern, We are not responsible for printing errors or the way in which individual work varies.

Please read instructions carefully before starting the construction of this quilt. If desired, wash and iron your fabrics before starting to cut.

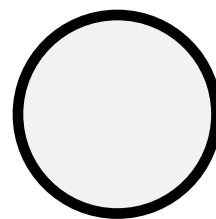
© 2020 Courtesy of Art Gallery Quilts LLC. All Rights Reserved.





Tail

Cheeks



MeowNing

