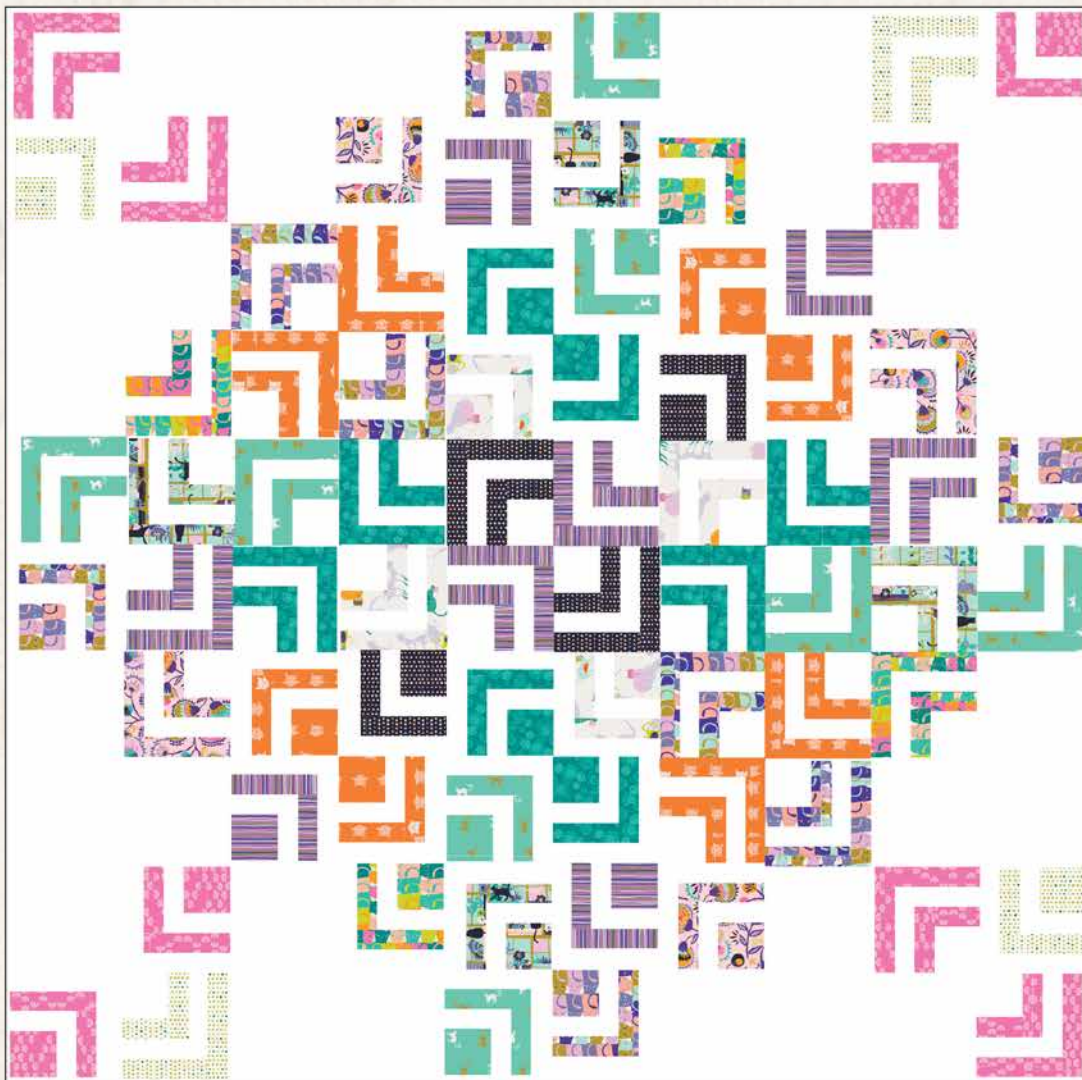


Log CATin



ANGLES

FREE PATTERN

XXXXXXXXXXXXXXXXXXXXXXXXXXXX

A DIVISION OF AGF

Log CATin

QUILT DESIGNED BY *AGFstudio*

THIS PATTERN IS FABRIC WONDERS FRIENDLY

fabric
wonders
COLLECTION PRE-CUTS



OH, MEOW!

FABRICS DESIGNED BY JESSICA SWIFT



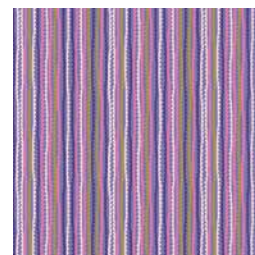
OHM-33440
KATTALAND FLORA



OHM-33441
CAT NAP



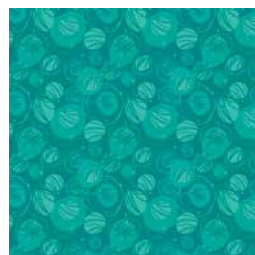
OHM-33442
KITTEN AROUND



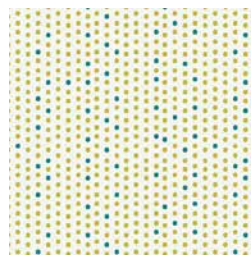
OHM-33443
UNTANGLED STRINGS



OHM-33444
PURRRRLANDIA



OHM-33445
CATURDAY FUN



OHM-33446
PAW-SOME DAY



OHM-33447
FELINE GOOD



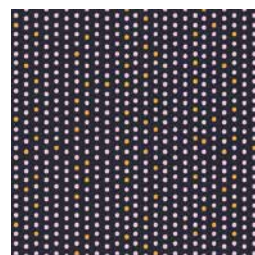
OHM-33448
CATITUDE SLUMBER



OHM-33449
MEOWTAIN MEADOWS



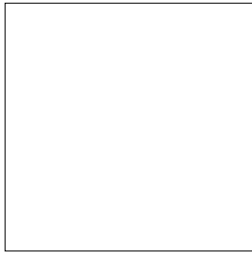
OHM-33450
CATITUDE SNOOZE



OHM-33451
PAW-SOME NIGHT



ADDITIONAL BLENDERS FOR THIS PROJECT



PE-433
SNOW



FINISHED SIZES

Quilt 81" x 81"

Shams 26" x 20"

FABRIC REQUIREMENTS

Fabric A	OHM-33440	(3) 10" squares
Fabric B	OHM-33441	(4) 10" squares
Fabric C	OHM-33442	(3) 10" squares
Fabric D	OHM-33443	(4) 10" squares
Fabric E	OHM-33444	(3) 10" squares
Fabric F	OHM-33445	(4) 10" squares
Fabric G	OHM-33446	(3) 10" squares
Fabric H	OHM-33447	(4) 10" squares
Fabric I	OHM-33448	(4) 10" squares
Fabric J	OHM-33449	(4) 10" squares
Fabric K	OHM-33450	(3) 10" squares
Fabric L	OHM-33451	(3) 10" squares
Fabric M	PE-433	6¼ yds.

BACKING FABRIC

OHM-33440 7½ yds. (Suggested)

BINDING FABRIC

Fabric **M** PE-433 (Included)

CUTTING DIRECTIONS

¼" seam allowances are included.
WOF means width of fabric.

- Forty two (42) 10" x 10" squares from the Oh, Meow! fabric wonders pre-cuts.
- Forty two (42) 10" x 10" squares from fabric **M**.
- Twenty eight (28) 8½" x 8½" squares from fabric **M**.
- Four (4) 20½" x 16" rectangles from fabric **M**.
- Four (4) 26½" x 2½" strips from fabric **M**.
- Four (4) 20½" x 1½" strips from fabric **M**.

CONSTRUCTION

Sew all rights sides together with ¼" seam allowance.

- Pair each 10" square from the Oh, Meow! fabric wonders pre-cuts to one 10" square from fabric **M**.
- Cut all the 10" squares into 2" strips following Diagram 1 and Diagram 2.

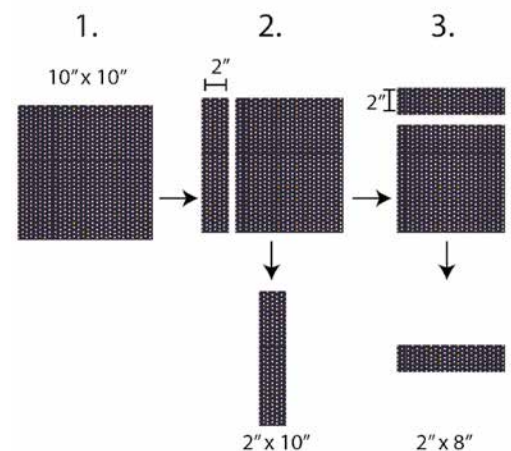


DIAGRAM 1

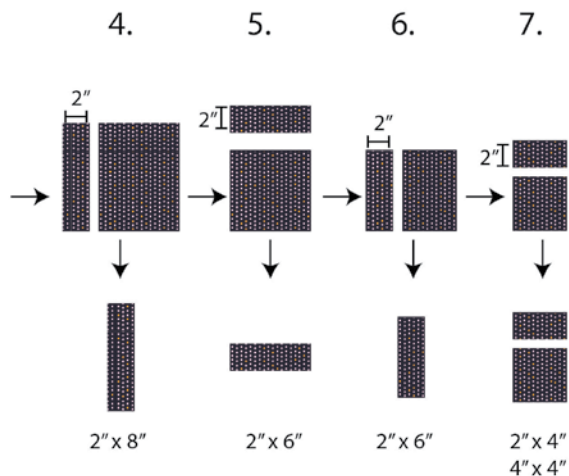


DIAGRAM 2

- As a result you will have one (1) 10" x 2" strip, two (2) 8" x 2" strips, two (2) 6" x 2" strips, one (1) 4" x 2" strip, and one (1) 4" x 4" square from each 10" x 10" square:

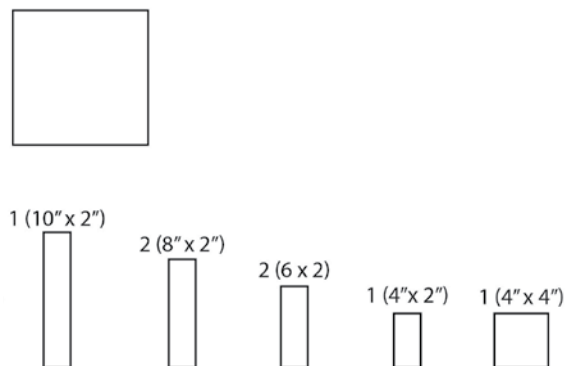
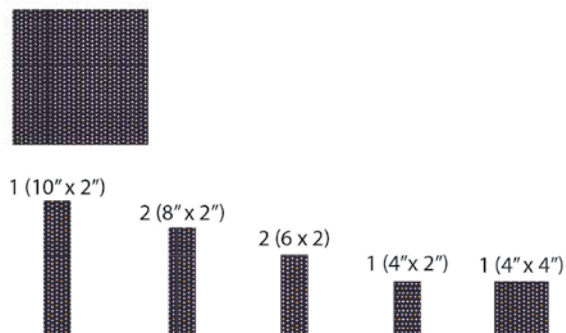


DIAGRAM 3

Block M1:

- Take one (1) 10" x 2" from fabric **M**, one (1) 8" x 2" from fabric **M**, one (1) 8" x 2" from fabric **L**, one (1) 6" x 2" from fabric **M**, one (1) 6" x 2" from fabric **L**, one (1) 4" x 2" from fabric **L**, and one (1) 4" x 4" from fabric **L**.

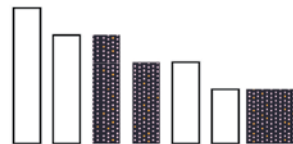


DIAGRAM 4

- Join the pieces making sure to align the strips to the top left of the block.
- For fabric placement and attachment follow Diagram 5 and Diagram 6.

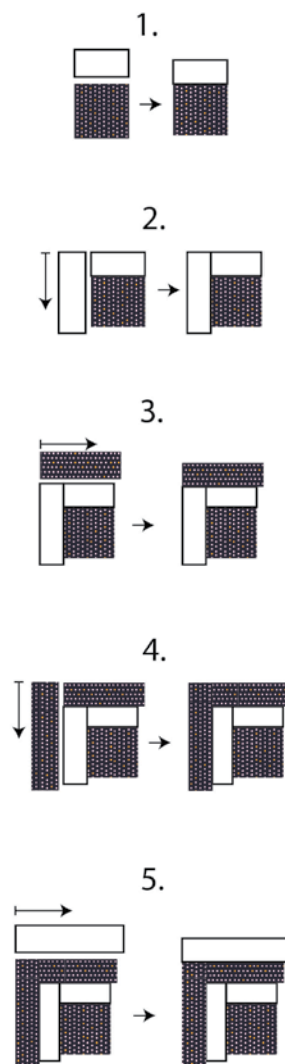


DIAGRAM 5

- As a result you will have the following blocks:

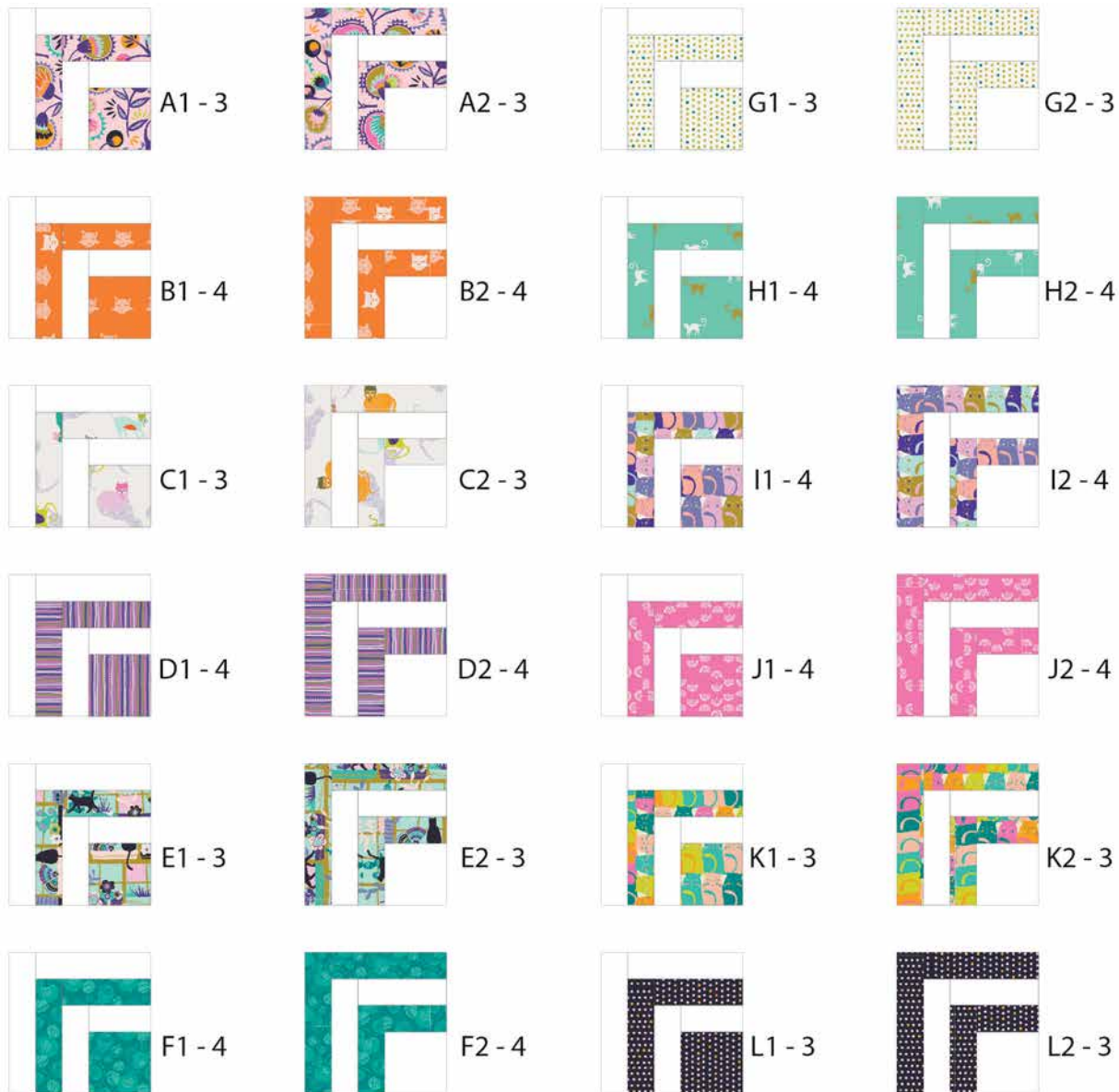


DIAGRAM 9

QUILT TOP ASSEMBLY

- Take all the blocks and twenty eight (28) 8½" x 8½" squares from fabric **M** and join them into rows:
- Row 1: J2 - M - M - M - I1 - H1 - M - M - G2 - J1
- Row 2: G1 - J2 - M - A1 - D1 - E1 - K1 - M - J1 - M
- Row 3: M - M - I2 - B2 - F1 - H1 - B1 - D1 - M - M
- Row 4: M - K2 - B2 - I2 - C1 - F1 - L1 - B1 - A2 - M
- Row 5: H2 - E2 - H2 - F2 - L2 - D2 - C2 - F2 - D2 - I2
- Row 6: I1 - D2 - F2 - C2 - D2 - L2 - F2 - H2 - E2 - H2
- Row 7: M - A2 - B1 - L1 - F1 - C1 - I2 - B2 - K2 - M
- Row 8: M - M - D1 - B1 - H1 - F1 - B1 - I2 - M - M
- Row 9: M - J1 - M - K1 - E1 - D1 - A1 - M - J2 - G1
- Row 10: J1 - G2 - M - M - H1 - I1 - M - M - M - J2

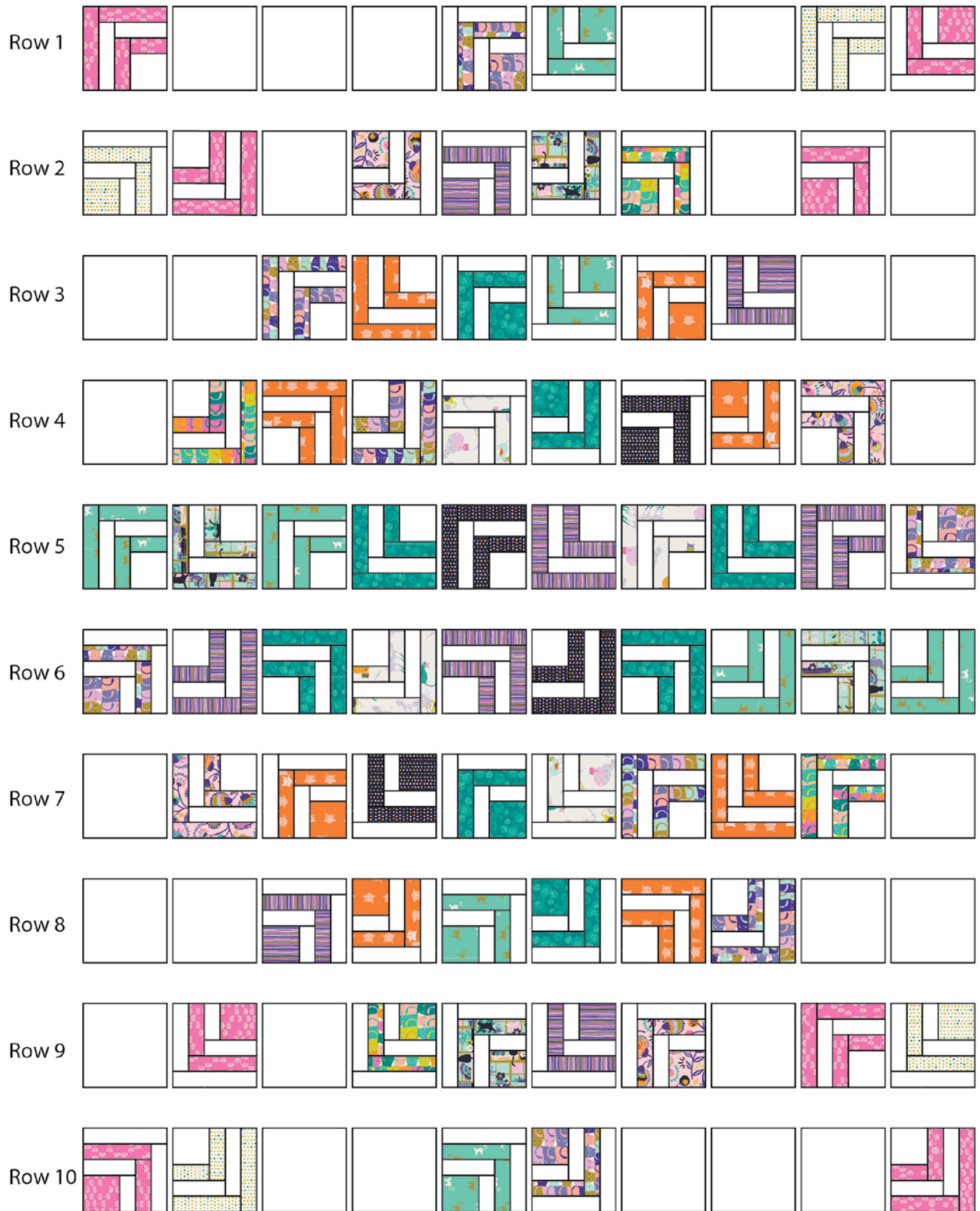


DIAGRAM 10

PILLOW SHAMS

- Take the leftover blocks and join them following Diagram 11:



DIAGRAM 11

- Take four (4) $26\frac{1}{2}$ " x $2\frac{1}{2}$ " strips from fabric **M**, and four (4) $20\frac{1}{2}$ " x $1\frac{1}{2}$ " strips from fabric **M**.
- Join them to the sides of the shams following Diagram 12:



DIAGRAM 12

BACK OF PILLOW SHAMS

- Take four (4) $20\frac{1}{2}$ " x 16" rectangles from fabric **M**, for the back part of your pillow shams.
- Finish one $20\frac{1}{2}$ " edge on each rectangle by folding the edge $\frac{1}{4}$ " twice and then edge-stitching.
- Pin both rectangles to the right side of the pillow top in a way that they overlap in the center of the pillow.
- Stitch all around at $\frac{1}{4}$ ".

QUILT ASSEMBLY

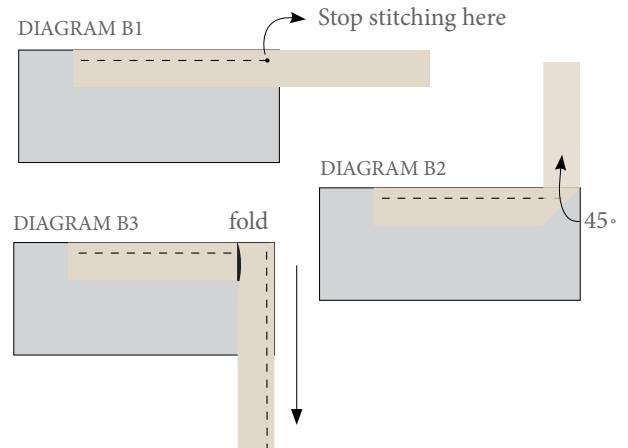
Sew rights sides together.

- Place BACKING FABRIC on a large surface wrong side up. Stretch it with masking tape against that surface.
- Place BATTING on top of backing fabric.
- Place TOP on top of the batting with right side facing up. Smooth away wrinkles using your hands.
- Pin all layers together and baste with basting thread, using long stitches. You can also use safety pins to join the layers.
- Machine or hand quilt starting at the center and working towards the corners. Remember that quilting motifs are a matter of personal preference. Have fun choosing yours!
- After you finished, trim excess of any fabric or batting, squaring the quilt to proceed to bind it.

BINDING

Sew rights sides together.

- Cut enough strips 1½" wide by the width of the fabric **M** to make a final strip 334" long. Start sewing the binding strip in the middle of one of the sides of the quilt, placing the strip right side down and leaving an approximated 5" tail. Sew with ¼" seam allowance (using straight stitch), aligning the strip's raw edge with the quilt top's raw edge.
- Stop stitching ¼" before the edge of the quilt (DIAGRAM B 1). Clip the threads. Remove the quilt from under the machine presser foot. Fold the strip in a motion of 45° and upward, pressing with your fingers (DIAGRAM B 2). Hold this fold with your finger, bring the strip down in line with the next edge, making a horizontal fold that aligns with the top edge of the quilt (DIAGRAM B 3). Start sewing at ¼" of the border, stitching all the layers. Do the same in the four corners of the quilt.
- Stop stitching before you reach the last 5 or 6 inches. Cut the threads and remove the quilt from under the machine presser foot. Lay the loose ends of the binding flat along the quilt edge, folding the ends back on themselves where they meet. Press them together to form a crease. Using this crease as the stitching line, sew the two open ends of the binding with right sides together (you can help yourself marking with a pencil if the crease is difficult to see).
- Trim seam to ¼" and press open. Complete the sewing. Turn binding to back of the quilt, turn raw edge inside and stitch by hand using blind stitch.



artgalleryfabrics.com

NOTE: While all possible care has been taken to ensure the accuracy of this pattern, We are not responsible for printing errors or the way in which individual work varies.

Please read instructions carefully before starting the construction of this quilt. If desired, wash and iron your fabrics before starting to cut.

© 2020 Courtesy of Art Gallery Quilts LLC. All Rights Reserved.