

TRIANGLE TOTE

TOTE DESIGNED BY AGF STUDIO



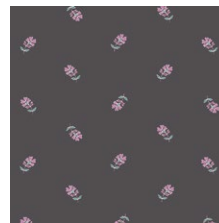
ATV-87207
AUTUMN NECTAR HONEY



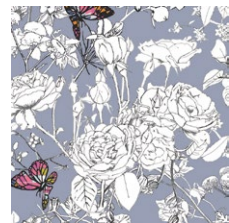
ATV-87202
SIMPLE DEFOLIAGE GOLD



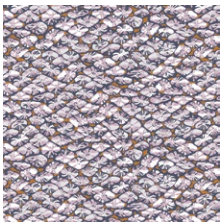
NTF-77900
LUNATION BRIGHT



FCD-67151
SPRINKLED PETALS MOON



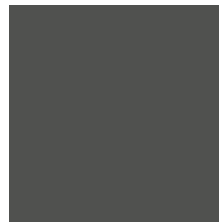
GRI-40400
PIXELFLY EDEN LILAC



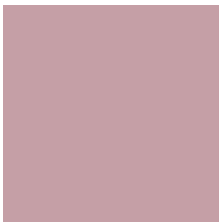
EAR-43960
EARTHING SEEDS



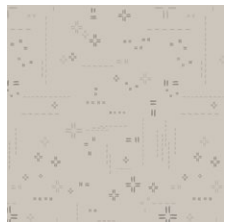
SPT-95225
CALICO DAYS LAVENDER



PE-430
MOONSTONE



PE-425
MAUVELOUS



DSE-701
PORCINI



TRIANGLE TOTE

FINISHED SIZE | 18" x 20"

FABRIC REQUIREMENTS

Fabric A	ATV-87207	1/8yd
Fabric B	GRI-40400	1/8yd
Fabric C	FCD-67151	1/8yd
Fabric D	EAR-43960	1/8yd
Fabric E	PE-430	1/8yd
Fabric F	SPT-95225	1/8yd
Fabric G	NTF-77900	1/8yd
Fabric H	ATV-87202	F8
Fabric I	PE-425	F8
Fabric J	DSE-701	1 1/8yds

LINING FABRIC

PE-439- 5/8 yds. (Suggested)

CUTTING DIRECTIONS

One (1) 3" x WOF strip from Fabrics **A, B, C, D, E, F, G**

Seven (7) 1 3/4" x WOF strip from Fabric **J**

Two (2) of Template 1 from Fabrics **H, I**

Twenty six (26) of Template 1 from Fabric **J**

One (1) 18 1/2" x 20 1/2" rectangle from Fabric **J**

Two (2) 4" x WOF strips from Fabric **C** (straps)

Two (2) 7 1/2" x 14 1/2" rectangle from Fabric **C** (drop in pocket)

CONSTRUCTION

- Pair Fabrics **A-G** 3" x WOF strip with one Fabric **J** 2 3/4" x WOF strip.
- Then, take Template 1 and place on top of your assemble strip and cut six (6) triangles for each.
- Make sure you line up the triangle as in the Diagram below.

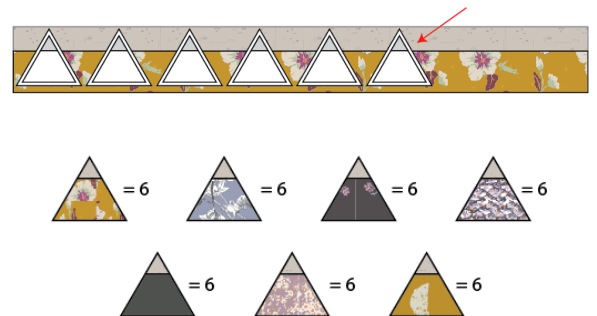


DIAGRAM 1

- Now, follow the diagram below for each row assembly.

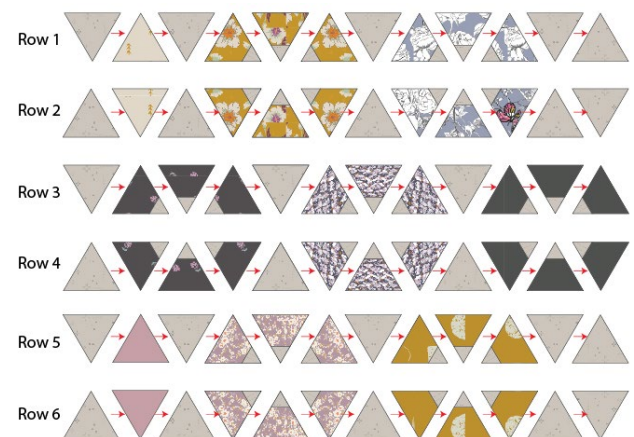


DIAGRAM 2

- Now, sew rows 1- 6.

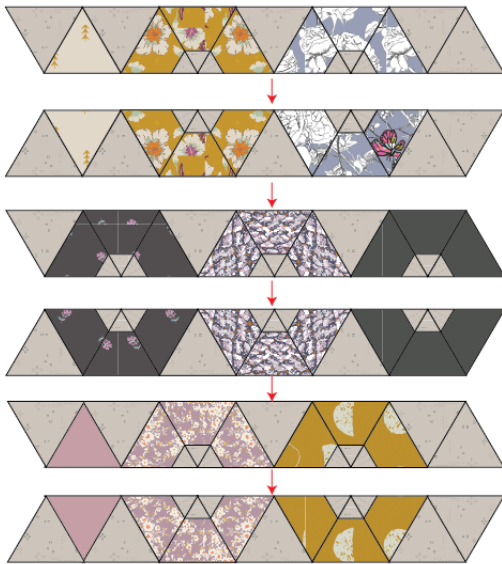


DIAGRAM 3

- Trim the unit so it measures 18½" x 20½".

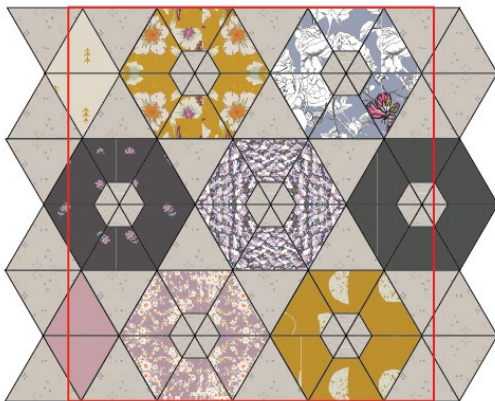


DIAGRAM 4

Drop-in pocket

- Take the 7½" x 14½" Fabric C piece and place it on top of one piece of your lining fabric. (diagram 5)
- Take the edges of Fabric C and fold them in and stitch right on the edge leaving the top part unsewn. (diagram 5.1)
- If you want, create a contrasting color binding detail on the top part of your pocket or a decorative stitch. (diagram 5.2)
- Flip the pocket up into its rightful place.
- Edge-stitch the right and left sides of the pocket. Backstitch to lock the seams in place, at the beginning and end of each stitching line. (diagram 5.3)
- Make a vertical stitching line through the pocket and lining fabric at each of the intervals.
- This will create 3 drop in pockets. (diagram 5.4)
- Create a quilting motif on the pocket if desired.

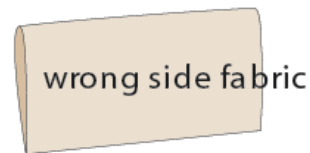


DIAGRAM 5

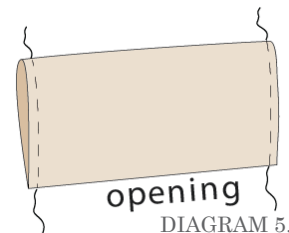


DIAGRAM 5.1

pocket top



DIAGRAM 5.2

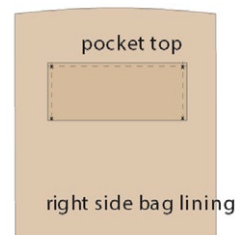


DIAGRAM 5.3

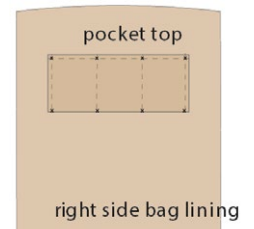


DIAGRAM 5.4

