

X  
X  
X  
X  
X  
X  
X  
X  
X  
X  
X  
X

# Stripy



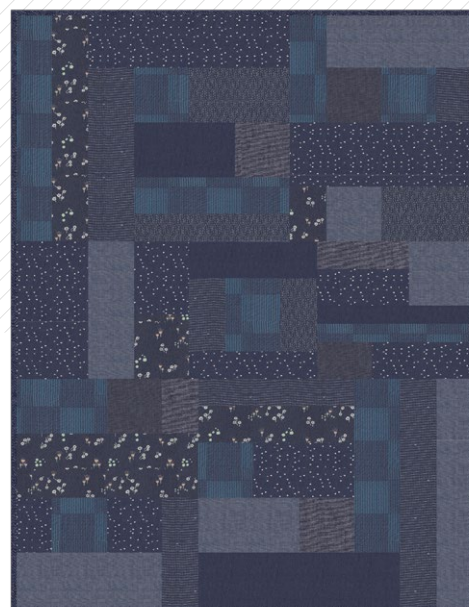
XX





# Stripy

FABRICS DESIGNED BY AGF STUDIO



DEN-S-2008  
CLASSIC DENIM



DEN-P-1010  
CASTED LOOPS



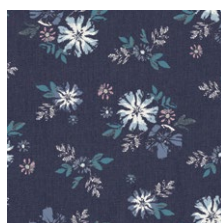
DEN-S-2003  
AFTERNOON SAIL



DEN-S-2001  
INDIGO SHADOW



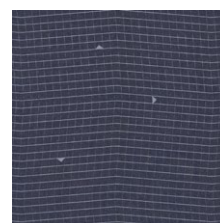
DEN-P-1008  
ALLOVER BARTACKS



DEN-P-1011  
ARTIC AVENS



DEN-P-1014  
VICE VERSA



DEN-P-1009  
BOMBAZINE INSPIRED



DEN-OYD-6001  
DEEP OCEAN



FINISHED SIZE | 50"x65"

Fabric <b>A</b>	DEN-S-2008	$\frac{7}{8}$ yd.
Fabric <b>B</b>	DEN-P-1010	$\frac{1}{2}$ yd.
Fabric <b>C</b>	DEN-S-2003	$\frac{3}{4}$ yd.
Fabric <b>D</b>	DEN-P-1008	$\frac{3}{4}$ yd.
Fabric <b>E</b>	DEN-P-1001	$\frac{1}{2}$ yd.
Fabric <b>F</b>	DEN-P-1014	$\frac{3}{4}$ yd.
Fabric <b>G</b>	DEN-P-1009	$\frac{3}{8}$ yd.
Fabric <b>H</b>	DEN-S-2001	$\frac{1}{4}$ yd.
Fabric <b>I</b>	DEN-OYD-6001	$\frac{1}{4}$ yd.

DEN-P-1005 4 yds. (*Suggested*)

Fabric **A** (Included)

*1/4" seam allowances are included.  
WOF means width of fabric.*

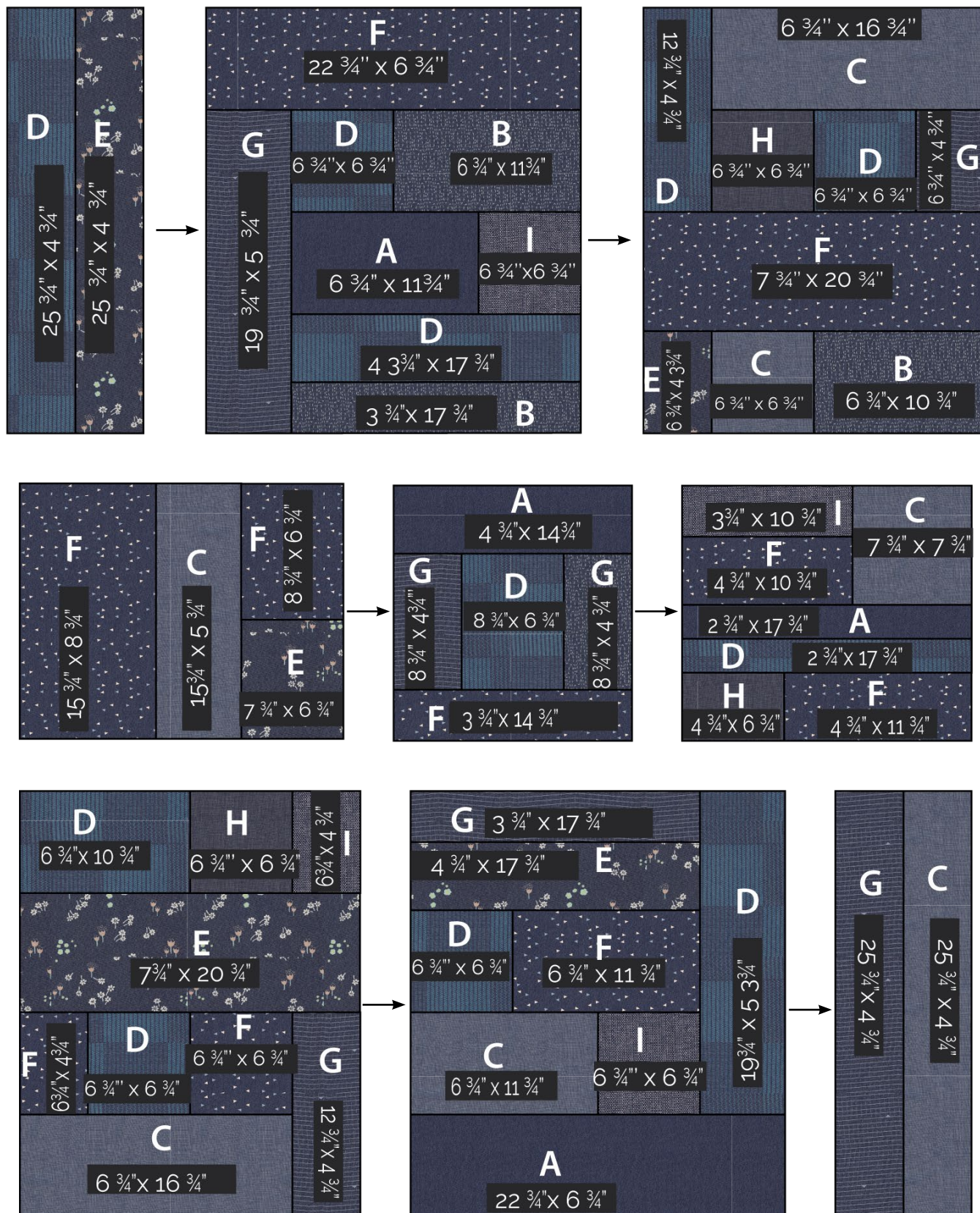
- One (1)  $6\frac{3}{4}$ " x  $6\frac{3}{4}$ " square from Fabrics **C, F**
- One (1)  $15\frac{3}{4}$ " x  $5\frac{3}{4}$ " rectangle from Fabric **C**  
Cut on a  $60^\circ$  bias.
- Two (2)  $6\frac{3}{4}$ " x  $16\frac{3}{4}$ " rectangle from Fabric **C**  
Cut one in a  $60^\circ$  bias
- One (1)  $7\frac{3}{4}$ " x  $7\frac{3}{4}$ " square from Fabric **C**
- One (1)  $4\frac{3}{4}$ " x  $25\frac{3}{4}$ " strip from Fabrics **C, D, E, G**
- One (1)  $6\frac{3}{4}$ " x  $10\frac{3}{4}$ " rectangle from Fabric **D**
- One (1)  $8\frac{3}{4}$ " x  $6\frac{3}{4}$ " rectangle from Fabric **D**
- One (1)  $2\frac{3}{4}$ " x  $17\frac{3}{4}$ " strip from Fabric **D**
- One (1)  $12\frac{3}{4}$ " x  $4\frac{3}{4}$ " strip from Fabrics **D, G**
- One (1)  $19\frac{3}{4}$ " x  $5\frac{3}{4}$ " rectangle from Fabrics **D, G**
- One (1)  $4\frac{3}{4}$ " x  $17\frac{3}{4}$ " rectangle from Fabrics **D, E**
- Four (4)  $6\frac{3}{4}$ " x  $6\frac{3}{4}$ " square from Fabric **D**
- One (1)  $7\frac{3}{4}$ " x  $6\frac{3}{4}$ " rectangle from Fabric **E**
- One (1)  $6\frac{3}{4}$ " x  $4\frac{3}{4}$ " rectangle from Fabrics **E, F, G, H, I**
- One (1)  $1\frac{3}{4}$ " x  $8\frac{3}{4}$ " rectangle from Fabric **F**
- One (1)  $6\frac{3}{4}$ " x  $22\frac{3}{4}$ " rectangle from Fabrics **F**
- One (1)  $8\frac{3}{4}$ " x  $6\frac{3}{4}$ " rectangle from Fabric **F**
- One (1)  $7\frac{3}{4}$ " x  $20\frac{3}{4}$ " rectangle from Fabrics **E, F**
- One (1)  $4\frac{3}{4}$ " x  $10\frac{3}{4}$ " rectangle from Fabric **F**
- One (1)  $4\frac{3}{4}$ " x  $11\frac{3}{4}$ " rectangle from Fabric **F**
- One (1)  $3\frac{3}{4}$ " x  $14\frac{3}{4}$ " rectangle from Fabric **F**
- One (1)  $8\frac{3}{4}$ " x  $4\frac{3}{4}$ " rectangle from Fabric **G**
- Two (2)  $6\frac{3}{4}$ " x  $6\frac{3}{4}$ " square from Fabrics **H, I**
- One (1)  $3\frac{3}{4}$ " x  $10\frac{3}{4}$ " rectangle from Fabric **I**
- One (1)  $3\frac{3}{4}$ " x  $17\frac{3}{4}$ " rectangle from Fabric **G**



## CONSTRUCTION

*Sew all rights sides together with ¼" seam allowance.*

For Fabric Placement and attachment See Diagram 1







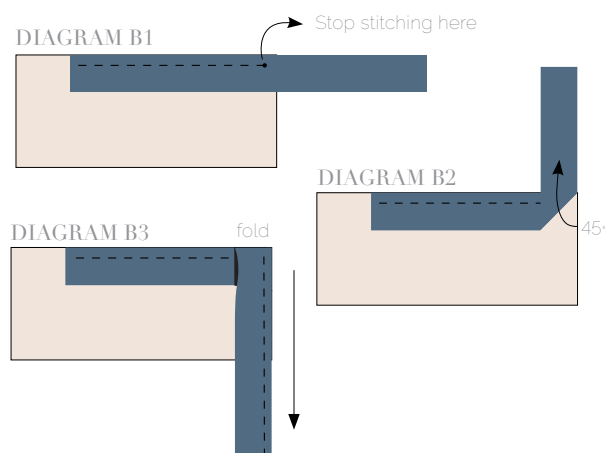


## QUILT ASSEMBLY

*Sew rights sides together*

- Place **BACKING FABRIC** on a large surface wrong side up. Stretch it with masking tape against that surface.
- Place **BATTING** on top of backing fabric.
- Place **TOP** on top of the batting with right side facing up. Smooth away wrinkles using your hands.
- Pin all layers together and baste with basting thread, using long stitches. You can also use safety pins to join the layers.
- Machine or hand quilt starting at the center and working towards the corners. Remember that quilting motifs are a matter of personal preference. Have fun choosing yours!
- After you finished, trim excess of any fabric or batting, squaring the quilt to proceed to bind it.

- Stop stitching before you reach the last 5 or 6 inches. Cut the threads and remove the quilt from under the machine presser foot. Lay the loose ends of the binding flat along the quilt edge, folding the ends back on themselves where they meet. Press them together to form a crease. Using this crease as the stitching line, sew the two open ends of the binding with right sides together (you can help yourself marking with a pencil if the crease is difficult to see).
- Trim seam to  $\frac{1}{4}$ " and press open. Complete the sewing. Turn binding to back of the quilt, turn raw edge inside and stitch by hand using blind stitch.



## BINDING

*Sew rights sides together.*

- Cut enough strips 1 ½" wide by the width of the fabric **A** to make a final strip 240" long. Start sewing the binding strip in the middle of one of the sides of the quilt, placing the strip right side down and leaving an approximated 5" tail. Sew with ¼" seam allowance (using straight stitch), aligning the strip's raw edge with the quilt top's raw edge.
- Stop stitching ¼" before the edge of the quilt (**DIAGRAM B 1**). Clip the threads. Remove the quilt from under the machine presser foot. Fold the strip in a motion of 45° and upward, pressing with your fingers (**DIAGRAM B2**). Hold this fold with your finger, bring the strip down in line with the next edge, making a horizontal fold that aligns with the top edge of the quilt (**DIAGRAM B3**). Start sewing at ¼" of the border, stitching all the layers. Do the same in the four corners of the quilt.

XXXXXXXXXXXXXXXXXXXXXXXXXXXXXXXXXXXX

*Congratulations  
& enjoy*

XXXXXXXXXXXXXXXXXXXXXXXXXXXXXXXXXXXX



[artgalleryfabrics.com](http://artgalleryfabrics.com)

NOTE: While all possible care has been taken to ensure the accuracy of this pattern, We are not responsible for printing errors or the way in which individual work varies. Please read instructions carefully before starting the construction of this quilt. If desired, wash and iron your fabrics before starting to cut.

© 2020 Courtesy of Art Gallery Quilts LLC. All Rights Reserved.