

The image displays four quilt squares arranged in a 2x2 grid. Each square features a central four-petaled flower design. The top-left square has a color palette of reds and oranges, with the petals filled with concentric curved lines. The top-right square uses a palette of reds, oranges, and greys, with the petals containing a small floral pattern. The bottom-left square is in shades of tan and cream, with the petals filled with a small floral pattern. The bottom-right square uses a palette of tan and greys, with the petals containing a leaf-like pattern. All squares are bordered by a wide white margin and a dark brown outer border.

by AGF

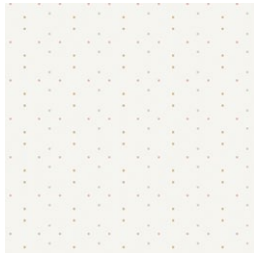
XXXXXXXXXXXXXXXXXXXXXXXXXXXX

Pirouette



Ballerina FUSION

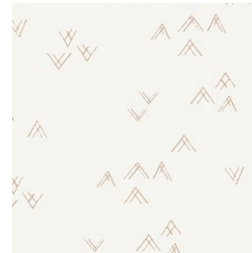
FABRICS DESIGNED BY AGF STUDIO



FUS-BL-1800
DOTTED VEIL BALLERINA



FUS-BL-1801
INTERRUPTED SIGNAL BALLERINA



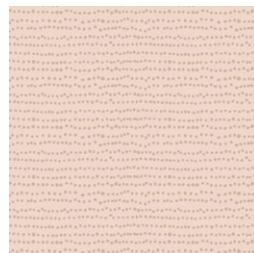
FUS-BL-1802
COMING HOME BALLERINA



FUS-BL-1803
WOODBLOCK BALLERINA



FUS-BL-1804
LACED BALLERINA



FUS-BL-1805
FLECKS BALLERINA



FUS-BL-1806
PLAYFUL SEAWEED



FUS-BL-1807
POSITIVITY BALLERINA



FUS-BL-1808
EDELWEISS BALLERINA



FUS-BL-1809
MAGIA BALLERINA



FEEL THE DIFFERENCE © 2020 Courtesy of Art Gallery Quilts LLC. All Rights Reserved.

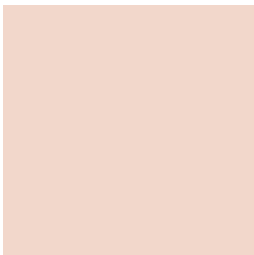
ADDITIONAL BLENDERS FOR THIS PROJECT



PE-472
CINNAMON



PE-432
SANDSTONE



PE-471
SWEET MACADAMIA



PE-431
MYSTIC GREY



DSE-712
BALLET



DSE-700
CLOUD



DEN-L-4000
SOFT SAND



DEN-S-2006
ADOBE CLAY



FINISHED SIZE | 12' x 12'

FABRIC REQUIREMENTS

Fabric A	FUS-BL-1807	FQ
Fabric B	PE-472	FQ
Fabric C	DSE-712	FQ
Fabric D	FUS-BL-1808	FQ
Fabric E	DEN-S-2006	FQ
Fabric F	PE-432	FQ
Fabric G	FUS-BL-1804	FQ
Fabric H	DEN-L-4000	FQ
Fabric I	PE-471	FQ
Fabric J	FUS-BL-1809	FQ
Fabric K	PE-431	FQ
Fabric L	DSE-700	FQ

CUTTING DIRECTIONS

$\frac{1}{4}$ " seam allowances are included.
WOF means width of fabric.

- Four (4) of Template 1 from Fabrics **B, C, E, F, H, I, K, L**
- Four (4) of Template 2 from Fabrics **A, D, G, J**

CONSTRUCTION

Sew all rights sides together with $\frac{1}{4}$ " seam allowance.

- Pair Fabric **A**, Template 2 and Fabric **B**, Template 2, right sides facing and pinning each edge and middle.



DIAGRAM 1

- Pair Fabric **C** on the other side of Fabric **A**.



DIAGRAM 2

- Repeat the same process three more times.



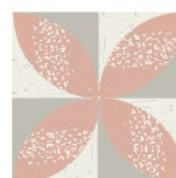
DIAGRAM 3

- Now, pair each unit as in the diagram below, creating your block.



DIAGRAM 4

- Repeat the same process for Blocks 2, 3 and 4.
- Quilt as desired.



XXXXXXXXXXXXXXXXXXXXXXXXXXXXXXXXXXXX

*Congratulations
& enjoy*

XXXXXXXXXXXXXXXXXXXXXXXXXXXXXXXXXXXX



FEEL THE DIFFERENCE

artgalleryfabrics.com

NOTE: While all possible care has been taken to ensure the accuracy of this pattern, We are not responsible for printing errors or the way in which individual work varies. Please read instructions carefully before starting the construction of this quilt. If desired, wash and iron your fabrics before starting to cut.



Pirouette



Pirouette