

A decorative arrangement featuring a pink towel hanging on a gold-colored metal rack against a white wall. To the right, a stack of colorful, patterned towels is displayed, topped with a dark brown towel and a light pink towel. The towels are resting on a light-colored, textured rug.

by AGF

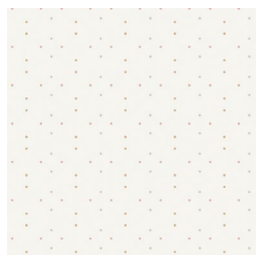
XXXXXXXXXXXXXXXXXXXXXXXXXXXX

Laundry Basket

QUILT DESIGNED BY AGFstudio

Ballerina **FUSION**

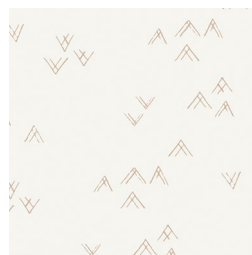
FABRICS DESIGNED BY AGF STUDIO



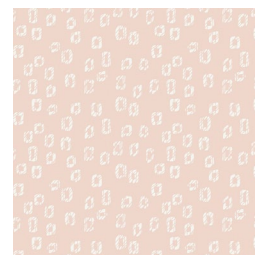
FUS-BL-1800
DOTTED VEIL BALLERINA



FUS-BL-1801
INTERRUPTED SIGNAL BALLERINA



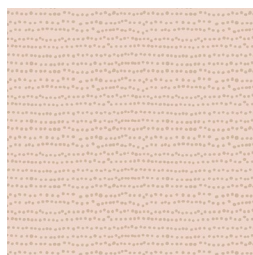
FUS-BL-1802
COMING HOME BALLERINA



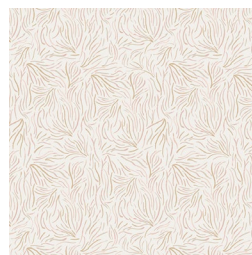
FUS-BL-1803
WOODBLOCK BALLERINA



FUS-BL-1804
LACED BALLERINA



FUS-BL-1805
FLECKS BALLERINA



FUS-BL-1806
PLAYFUL SEAWEED



FUS-BL-1807
POSITIVITY BALLERINA



FUS-BL-1808
EDELWEISS BALLERINA



FUS-BL-1809
MAGIJA BALLERINA



Laundry Basket

FINISHED SIZE | 23 ½" x 13"

FABRIC REQUIREMENTS

Fabric A	FUS-BL-1800	¼ yd.
Fabric B	FUS-BL-1802	¼ yd.
Fabric C	FUS-BL-1803	¼ yd.
Fabric D	FUS-BL-1805	¼ yd.
Fabric E	FUS-BL-1807	⅓ yd.
Fabric F	FUS-BL-1809	⅓ yd.
Fabric G	PE-419	⅓ yd.
Fabric H	PE-472	⅝ yd.
Fabric I	PE-469	1⅓ yd.

CUTTING DIRECTIONS

¼" seam allowances are included.
WOF means width of fabric.

Two (2) 2½" x 22½" Strips from Fabrics **A**, **B**, **C**, **D** and **H**.

Two (2) 5½" x 22½" Strips from Fabric **E**.

Four (4) 2 1/2" x 22½" Strips from Fabrics **F** and **G**.

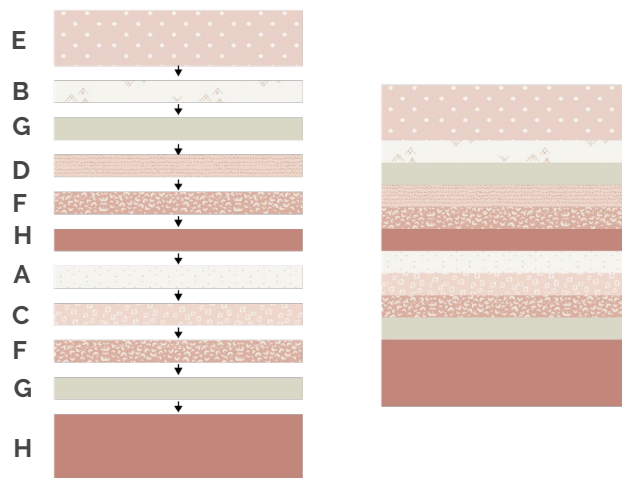
Two (2) 6½" x 22½" Strips from Fabric **H**.

Two (2) 22 1/2" x 29 1/2" rectangles from fabric **I**.

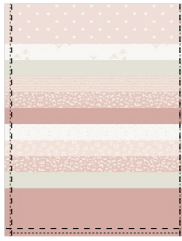
CONSTRUCTION

Sew all rights sides together with ¼" seam allowance.

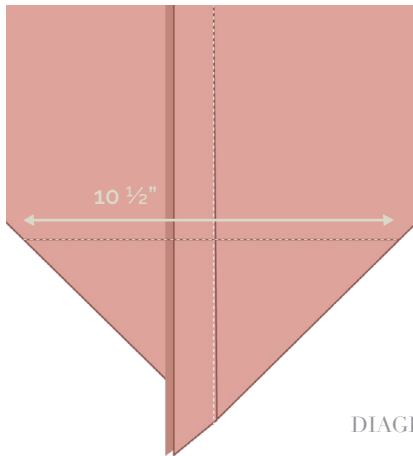
- Start attaching the strips for the exterior panels of the laundry basket.
- Take one (2) 2½" x 22½" Strips from Fabrics **A**, **B**, **C**, **D** and **H**, one 5½" x 22½" Strip from Fabric **E**, two 2 1/2" x 22½" Strips from Fabrics **F** and **G** and one 6½" x 22½" Strip from Fabric **H**.
- Attach the strips in the order **EBGDFHACFGH**.
- Press open.
- Make two striped exterior panels.
- Set aside.



- If you would like to quilt your laundry basket this is the time to add some batting to each panel and quilt them as desire separately.
- Sew the two panels facing right sides of fabric together.
- Leave the top open.



- Before moving on to the lining pieces, box corner the exterior panels.
- Use the seams on the inside to line up your corner, nestle your seams so they fit nicely and pin.
- Use a ruler to draw a line where you can measure 10 ½" from corner to corner.
- Sew along this line.

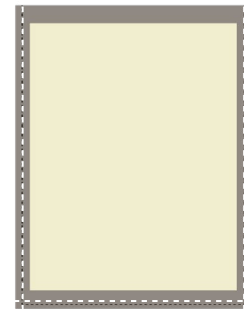


- Trim the excess fabric leaving ¼" seam allowance.
- Repeat for the other corner.
- Turn it right side out and set aside.



XX

- Iron heavy weight fusible to the rectangles.
- Sew the rectangles facing right sides of fabric together.
- Leave the top open.



- Repeat the box corner step for the lining as well.
- Bring the exterior panel and the lining.
- Insert the exterior panel inside the lining, place right sides of fabric together.



artgalleryfabrics.com

- Sew together with a ¼" seam allowance, leaving a 4" gap for turning inside out.



DIAGRAM 7

- XXXXXXXXXXXXXXXXXXXXXXXXXXXXXXXXXXXX
- Turn the basket inside out and hand stitch the 4" opening to close it.
 - Top stitch if desired and fold about 2" to expose the lining.



DIAGRAM 8



artgalleryfabrics.com

NOTE: While all possible care has been taken to ensure the accuracy of this pattern, We are not responsible for printing errors or the way in which individual work varies. Please read instructions carefully before starting the construction of this quilt. If desired, wash and iron your fabrics before starting to cut.

© 2020 Courtesy of Art Gallery Quilts LLC. All Rights Reserved.