

Floral



FUSIONS

by AGF

FREE PATTERN

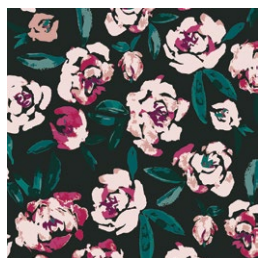
XXXXXXXXXXXXXXXXXXXXXXXXXXXX

Floral

DESIGNED BY AGFstudio

forestA FUSION

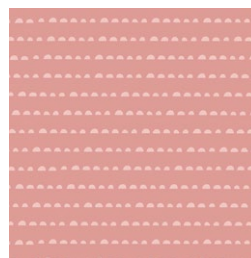
FABRICS DESIGNED BY AGF STUDIO



FUS-FO-2100
FIELDS OF FORESTA



FUS-FO-2101
TIMBER FORESTA



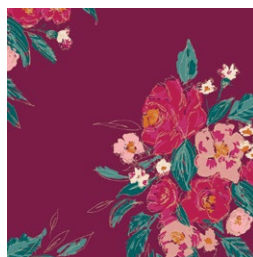
FUS-FO-2102
STAY HUMBLE FORESTA



FUS-FO-2103
FLORAL NO. 9 FORESTA



FUS-FO-2104
TROUVILLE ROUTES FORESTA



FUS-FO-2105
EXTEMPORE FORESTA



FUS-FO-2106
SIMPLE DEFOLIATION FORESTA



FUS-FO-2107
MYSTICAL WOODS FORESTA



FUS-FO-2108
FLORA AND FAUNA FORESTA



FUS-FO-2109
ETERNAL NATURE FORESTA



ADDITIONAL BLENDERS USED IN THIS PROJECT



PE-494
DRIED ROSES



PE-485
RAW GOLD



DSE-711
BORGOGNA



FE-539
ESMERALDA



DEN-S-2002
COOL FOLIAGE



DEN-S-2006
ADOBE CLAY

Floral

FINISHED SIZE | 12" x 12"

FABRIC REQUIREMENTS

Block 1

Fabric A	FUS-FO-2103	F8
Fabric B	FUS-FO-2102	F8
Fabric C	DSE-711	F8
Fabric D	PE-494	F8
Fabric E	FUS-FO-2101	F8

Block 2

Fabric A	FUS-FO-2107	F8
Fabric B	FUS-FO-2106	F8
Fabric C	FE-539	F8
Fabric D	DEN-S-2002	F8
Fabric E	FUS-FO-2105	F8

Block 3

Fabric A	DEN-S-2006	F8
Fabric B	FUS-FO-2105	F8
Fabric C	PE-485	F8
Fabric D	FUS-FO-2104	F8
Fabric E	FUS-FO-2107	F8

Block 4

Fabric A	DEN-S-2002	F8
Fabric B	FUS-FO-2103	F8
Fabric C	FUS-FO-2101	F8
Fabric D	FUS-FO-2102	F8
Fabric E	FUS-FO-2100	F8

CUTTING DIRECTIONS

*1/4" seam allowances are included.
WOF means width of fabric.*

- Twelve (12) 2½" x 2½" squares from Fabric A.
- Two (2) 3½" x 12½" rectangles from Fabric A.
- Two (2) 3½" x 18½" rectangles from Fabric A.
- One (1) 5¼" x 5¼" squares from Fabric A.
- One (1) 4" x 4" squares from Fabric B.
- Four (4) 2⅞" x 2⅞" squares Fabric B.
- Four (4) 2⅞" x 2⅞" squares Fabric C.
- One (1) 5¼" x 5¼" squares from Fabric D.
- One (1) 4" x 4" squares from Fabric D.
- One (1) 4½" x 4½" square on point from Fabric E.

CONSTRUCTION

For this project we will be using two different methods. The 4 at the time HST and the not waste Flying Geese.

4 at a time HST Method:

- Start by placing one 4" Square from fabric B and D right sides together.
- Mark a diagonal line across on the wrong side of fabric square.
- Sew all around the square ¼" away from the edge.
- Using your rotary blade, cut the square in quarters following the drawn diagonal lines.
- Press each HST and trim to a 2½" x 2½" Squares.

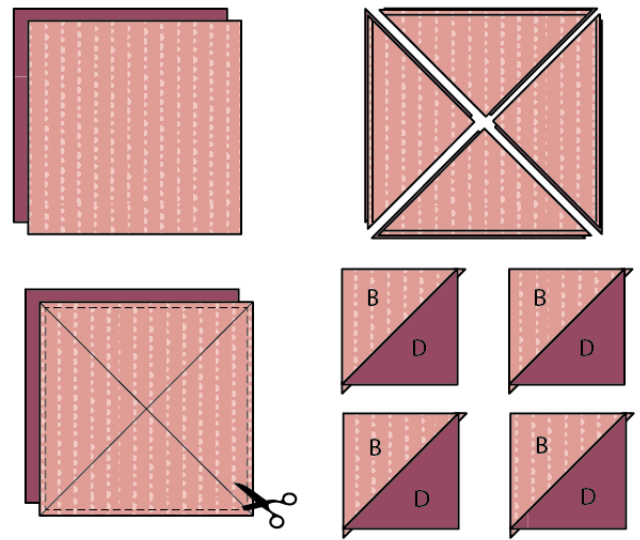


DIAGRAM 1

Not waste Flying Geese Method:

- Start by placing one 2⅞" square from fabric B on each opposite corner of a 5¼" x 5¼" square from fabric A.
- Draw a line diagonally.
- Sew at ¼" on each side of the line.
- Cut through the drawn line

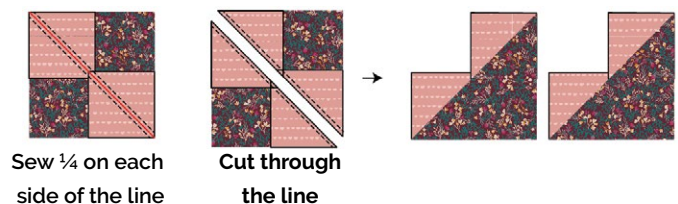


DIAGRAM 2

- Now place another $2\frac{7}{8}$ " square from fabric **B** and place it on the right bottom corner,
- Draw a diagonal line and sew at $\frac{1}{4}$ " on each side of the line.
- Cut through the line, press open, and repeat the same step with the other piece. You will get four Flying Geese.
- Repeat this method with a $5\frac{1}{4}$ " square from fabric **D** and four $2\frac{7}{8}$ " squares from fabric **C**.

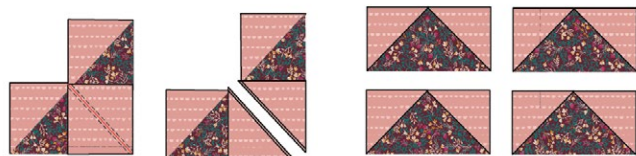


DIAGRAM 3

- For fabric placement and attachment follow the diagram below.

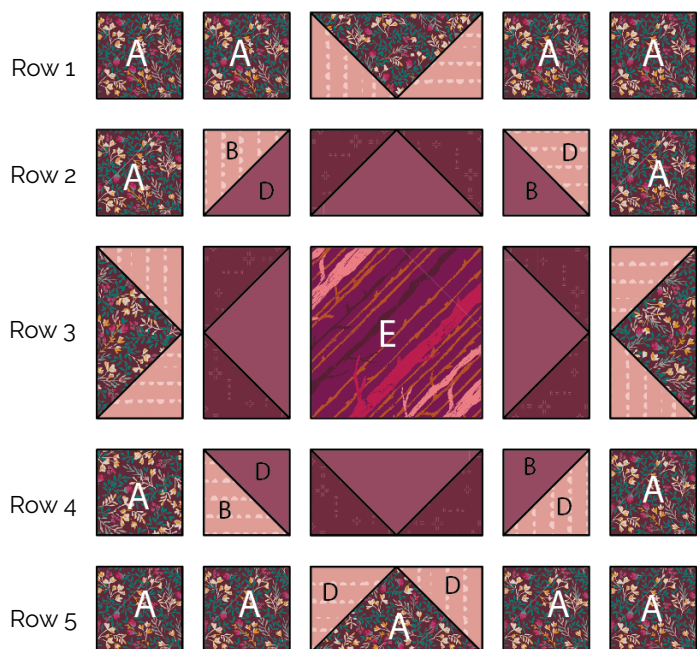


DIAGRAM 4

- Take a $3\frac{1}{2}$ " x $12\frac{1}{2}$ " strip from Fabric **A**, and sew it to each side of the block.

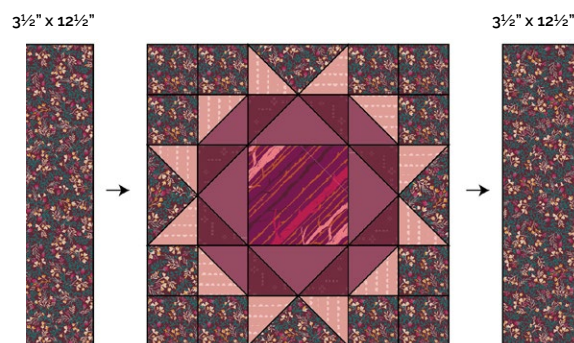


DIAGRAM 5

- Take a $18\frac{1}{2}$ " x $3\frac{1}{2}$ " rectangles from Fabric **A**, and sew one to the top and the other one to the bottom **C**

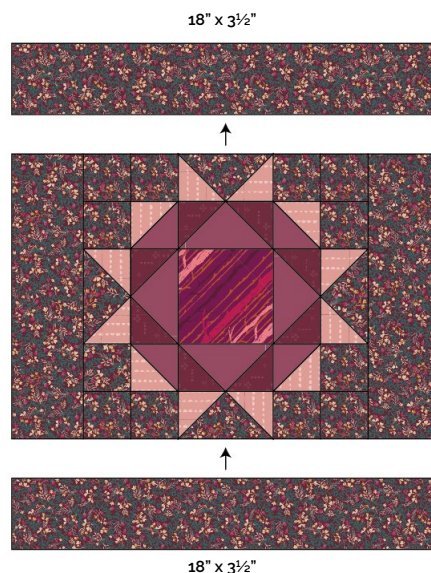


DIAGRAM 6

- Rotate the block 90° and trim to 12" x 12" square.

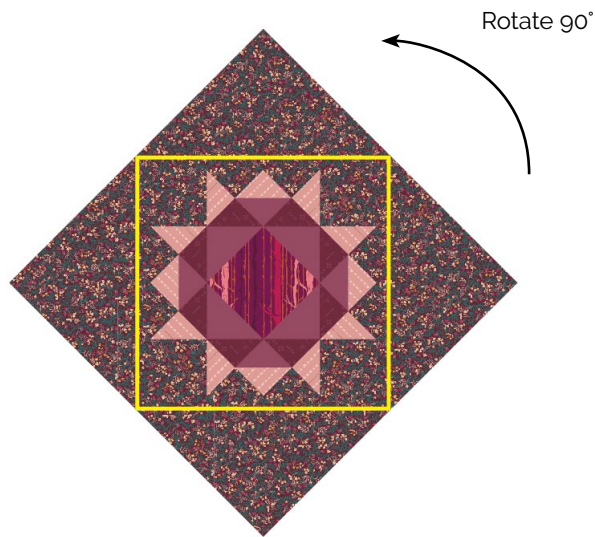


DIAGRAM 7

12" x 12" Block



DIAGRAM 8

Follow the same directions for the other three blocks.



artgalleryfabrics.com

NOTE: While all possible care has been taken to ensure the accuracy of this pattern, We are not responsible for printing errors or the way in which individual work varies. Please read instructions carefully before starting the construction of this quilt. If desired, wash and iron your fabrics before starting to cut.

© 2020 Courtesy of Art Gallery Quilts LLC. All Rights Reserved.

xxxxxxxxxxxxxxxxxxxxxxxxxxxxxxxx

Congratulations
& enjoy

xxxxxxxxxxxxxxxxxxxxxxxxxxxxxxxx