

Carmen Bag



FUSIONS

by AGF

FREE PATTERN

XXXXXXXXXXXXXXXXXXXXXXXXXXXX

Carmen Bag



FORESTA FUSION

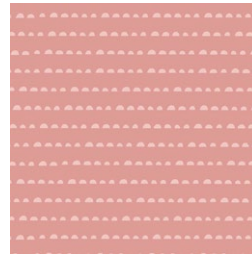
FABRICS DESIGNED BY AGF STUDIO



FUS-FO-2100
FIELDS OF FORESTA



FUS-FO-2101
TIMBER FORESTA



FUS-FO-2102
STAY HUMBLE FORESTA



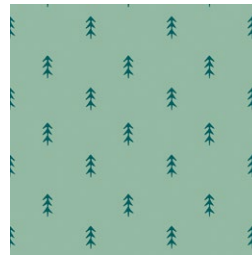
FUS-FO-2103
FLORAL NO. 9 FORESTA



FUS-FO-2104
TROUVILLE ROUTES FORESTA



FUS-FO-2105
EXTEMPORE FORESTA



FUS-FO-2106
SIMPLE DEFOLIAGE FORESTA



FUS-FO-2107
MYSTICAL WOODS FORESTA



FUS-FO-2108
FLORA AND FAUNA FORESTA



FUS-FO-2109
ETERNAL NATURE FORESTA



DSE-712
BALLET



DSE-711
BORGOGNA



PE-494
DRIED ROSES



Carmen Bag

FINISHED SIZE | 9" x 9" x 2"

FABRIC REQUIREMENTS

Fabric **A** FUS-FO-2100 ½ yd.

Fabric **B** DSE-711 ⅛ yd.

Fabric **C** DSE-711 ½ yd.

Fabric **D** PE-494 ¾ yd.

LINING FABRIC

Fabric **D** -(Included)

ADDITIONAL MATERIAL

12" Zipper

Medium weight fusible

Fusible interfacing

2 Handbag rings

CUTTING DIRECTIONS

¼" seam allowances are included.
WOF means width of fabric.

- One (1) 2½" x WOF strip from Fabrics **A, C, D**
Sub cut into two 18" x 2½" strips.
- One (1) 2½" x WOF strip from Fabric **A**
- Two (2) 12" x 1½" strip from Fabric **A**
- Two (2) of Pocket Template from Fabric **A**
- One (1) 1½" x WOF strip from Fabrics **B, C**
Sub cut into two 18" x 1½" strips.
- One (1) 4" x WOF strip from Fabric **D**
- Two (2) 3½" x 4" rectangle from Fabric **D**
- One (1) of Template 1 from Fabric **C**

CONSTRUCTION

Sew all rights sides together with ¼" seam allowance.

Assemble the following blocks using the 18" strips from Fabric **A, B, C, D**

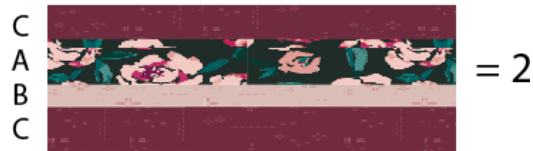


DIAGRAM 1

Use Template 2 to cut your pieces as in the diagram below.

Make sure the curved part is placed 1" on Fabric **D**

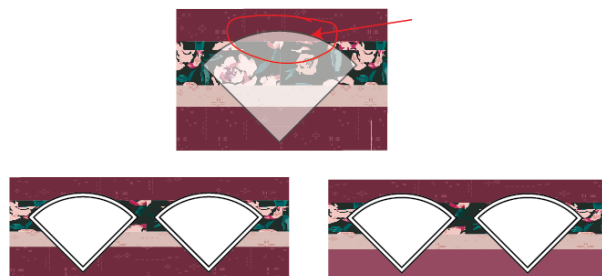


DIAGRAM 2

Pair all pieces creating your front of the bag.

Place batting and quilt as desired.

Then, place medium weight fusible and the lining and pin all around.



DIAGRAM 3

For the back side of the bag, take two Pocket pieces and place them right sides facing.

Place fusible interfacing on one side and sew on the straight part.

Flip the piece and then top stitch on the top part.



DIAGRAM 4

Place the Pocket piece on top of Template 1, Fabric D cut out unit, pinning all around.



DIAGRAM 5

ZIPPER CONSTRUCTION

Insert your zipper foot-

Take lining and Fabric A 12½" x 1½" strip and sandwich them in between your 12" zipper.

Using a zipper foot sew as close to the zipper teeth as possible.

Sew the two pieces of fabric with right sides together with the zipper sandwiched

inbetween the two pieces of fabric (Diagram 6.1 and 6.2)

Press fabric away from zipper and edge stitch the seam allowance to the lining sewing

as close the edge as possible..

Repeat process for the other side of the zipper using your other lining piece and Fabric A strip.

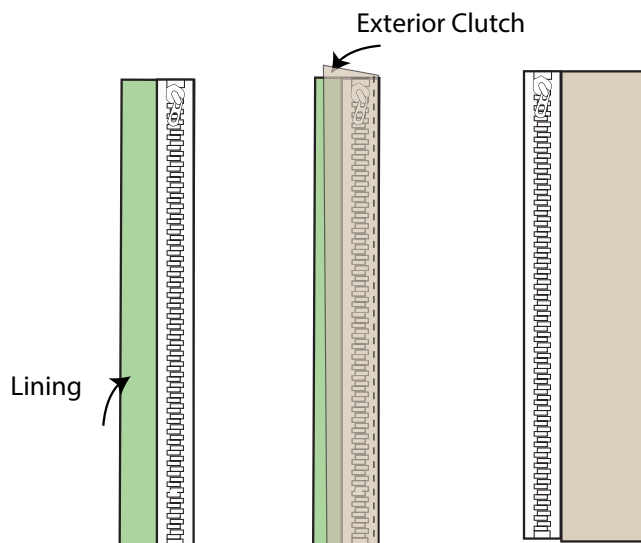


DIAGRAM 6.1

DIAGRAM 6.2

DIAGRAM 6.3

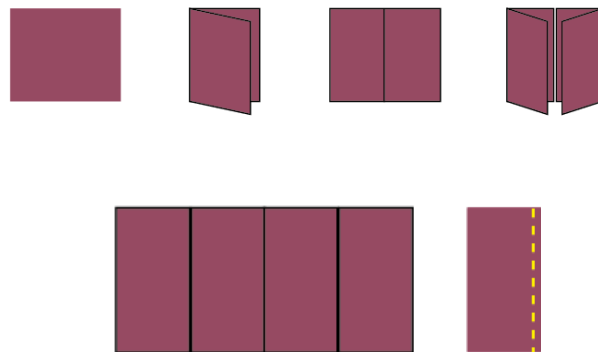


CREATING THE STRAP

Take two Fabric D 3" x 4" pieces and place fusible interfacing inside.

Fold in half to create a crease in the center, then open it and fold the edges towards the crease.

Fold the folded edges and top stitch.



Repeat the same strap instruction for the handle fabric.

Trim the strap to your preferred length.



DIAGRAM 7

Take the handbag ring pieces and insert the straps on each side of the rings, stitching across the ends.



DIAGRAM 8

Sew the short straps on each side of the zipper.



DIAGRAM 9

Take the 2½" x WOF strip from Fabric A and lining and sew on one side of the zipper and strap unit.



DIAGRAM 10

Pin the strip along the circle, making sure the zipper part is on the center half of the bag.

Pin and measure the long strip and trim excess fabric.

Sew all around, making sure the handles are pinned on the center of the bag.



DIAGRAM 11

Now, take the other side of the circle bag and pair it with the front side of the bag.

Make sure the handle is placed away from the edges.

Sew all around, leaving an unsewn portion on the bottom, or leave a small portion

of the zipper open to turn your bag inside out.

For the raw edges, you may use binding with the color of your choice.

Pull right side of the fabric through the unsewn portion.

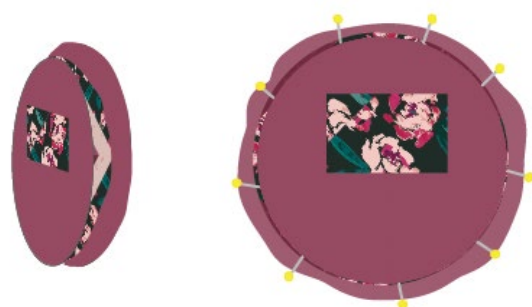


DIAGRAM 12

Enjoy your Carmen Round bag!



XXXXXXXXXXXXXXXXXXXXXXXXXXXXXXXXXXXX

*Congratulations
& enjoy*

XXXXXXXXXXXXXXXXXXXXXXXXXXXXXXXXXXXX

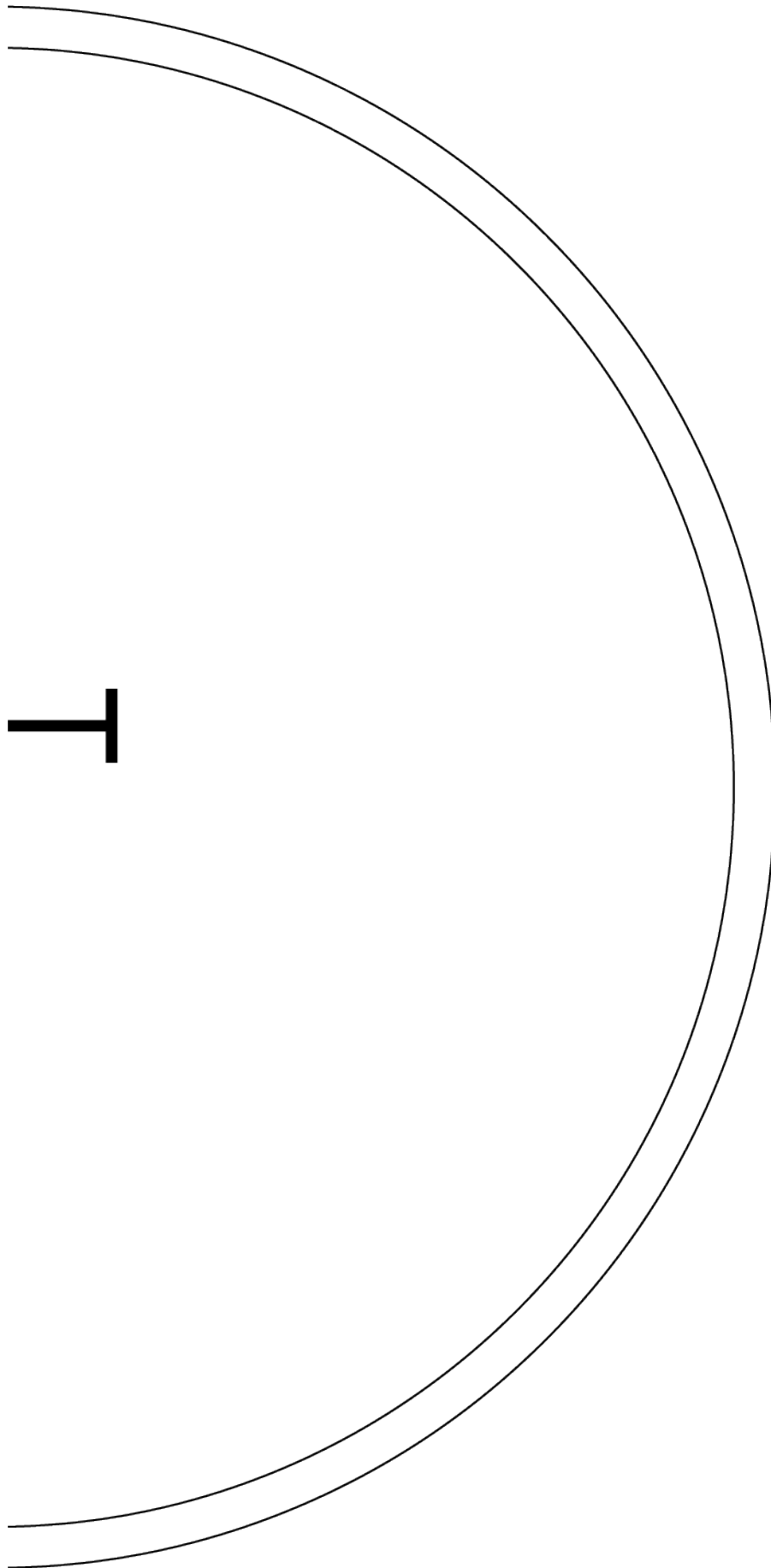


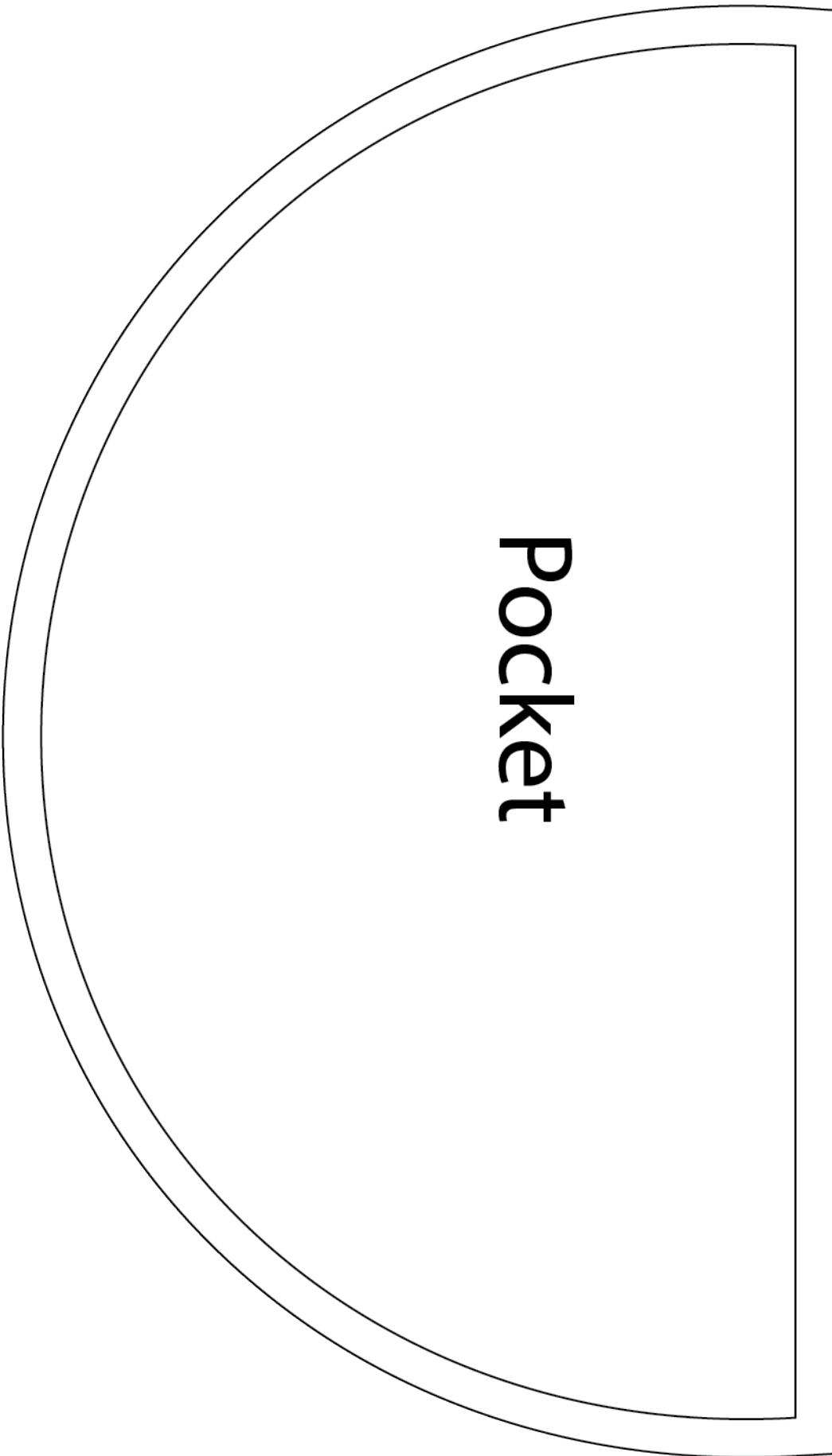
FEEL THE DIFFERENCE

artgalleryfabrics.com

NOTE: While all possible care has been taken to ensure the accuracy of this pattern, We are not responsible for printing errors or the way in which individual work varies. Please read instructions carefully before starting the construction of this quilt. If desired, wash and iron your fabrics before starting to cut.

Template 1





Pocket

Template 2