

X
X
X
X
X
X
X
X
X
X
X
X

A flat-lay photograph featuring a white tote bag with a vibrant, hand-painted pattern of yellow lemons and green leaves. The bag has two light beige fabric handles. Three real lemons are scattered around the bag: one at the top right, one in the middle left, and one at the bottom right. A large, green palm frond is positioned in the upper left corner, partially overlapping the bag's handle. The entire scene is set against a plain white background.

× × × × × × × × × × × × × × × × × × × ×



Limon TOTE

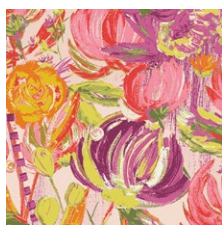
CANVAS TOTE BAG
DESIGNED BY AGF.

Sage

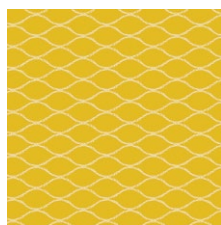
FABRICS DESIGNED BY BARI J.



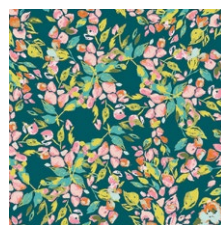
EARLY DESERT



SGE-14450
PAINTED DESERT MORNING



SGE-14451
SAGUARO CREST SUN



SGE-14452
BOUGAINVILLEA EVERGREEN



SGE-14453
YUMA LEMONS MIST



SGE-14454
PRIMROSE FIELD DARK



SGE-14455
COYOTE & QUAIL JOJOBA



SGE-14456
SUNSWEEP CANYON ROSE



SGE-14457
CACTUS FLORA BERRY



SGE-14458
BAJA WEAVE CURRANT



SGE-14459
PRICKLY PEAR RUBY

LATE DESERT



SGE-24450
PAINTED DESERT NIGHT



SGE-24451
SAGUARO CREST OLIVE



SGE-24452
BOUGAINVILLEA LILAC



SGE-24453
YUMA LEMONS GLARE



SGE-24454
PRIMROSE FIELD LIGHT



SGE-24455
COYOTE & QUAIL LAVENDER



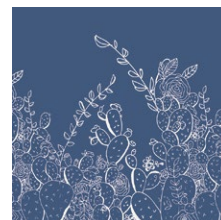
SGE-24456
SUNSWEEP CANYON SAGE



SGE-24457
CACTUS FLORA LILY



SGE-24458
BAJA WEAVE MAUVE



SGE-24459
PRICKLY PEAR INDIGO



FEEL THE DIFFERENCE © 2015 Courtesy of Art Gallery Quilts LLC. All Rights Reserved.

Limon TOTE

FINISHED SIZE | 17" x 16"

FABRIC REQUIREMENTS

Fabric A C-44725 1 yd.

CUTTING DIRECTIONS

*¼" seam allowances are included.
WOF means width of fabric.*

Start by cutting one (1) piece of 33" x 16½" and two (2) long straps of 16" long by 1¾"



DIAGRAM 1

CONSTRUCTION

Sew all rights sides together with ¼" seam allowance.

- fold the 33" x 16½." canvas in half,
- Now you have a 16½" x 16½." square.
- The fold side will be the tote bottom.

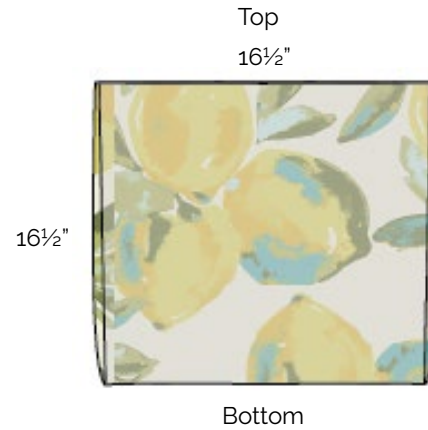


DIAGRAM 2

- Fold the top of the canvas down 1" from the edge
- Sew about ¼" from the edge.
- Double stitch at the beginning and end.
- Repeat the same step to the other side.



DIAGRAM 3

- Sew the sides of the bags together at ½" .



DIAGRAM 4

- At the bottom corners of your bag, pinch the corners and sew across like shown on diagram below.
- Measure properly for both of the corners and pin it to make it easier.
- Sew about 2½" across the corners, and cut the excess fabric.
- This will give the bag volume at the bottom.

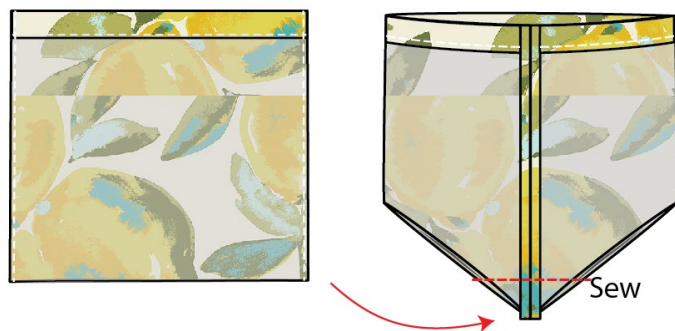


DIAGRAM 5

- Take the 16" x 1¾" straps, fold them as shown on diagram below,
- and press, fold it again and top stitch.

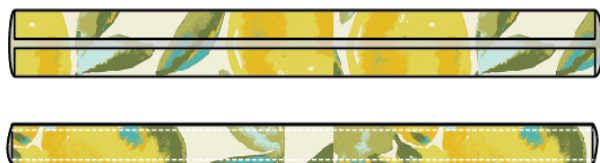


DIAGRAM 6

- Take one of the straps and measure about 4" to the side, and lined up to the 1" fold of the top of the bag. Pin the strap and sew. repeat the same step on each sides.

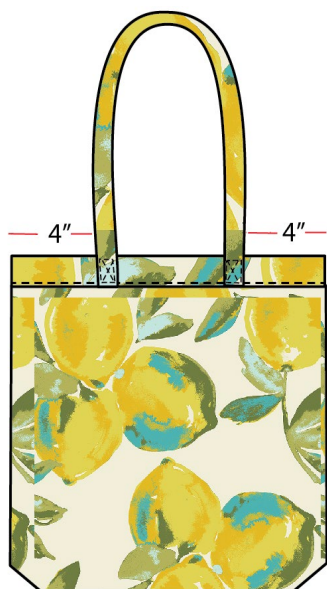


DIAGRAM 7

XXXXXXXXXXXXXXXXXXXXXXXXXXXXXXXXXXXX

Congratulations & enjoy

XXXXXXXXXXXXXXXXXXXXXXXXXXXXXXXXXXXX



artgalleryfabrics.com

NOTE: While all possible care has been taken to ensure the accuracy of this pattern, We are not responsible for printing errors or the way in which individual work varies.

Please read instructions carefully before starting the construction of this quilt. If desired, wash and iron your fabrics before starting to cut.

© 2020 Courtesy of Art Gallery Quilts LLC. All Rights Reserved.