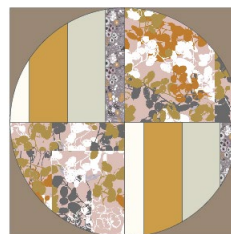
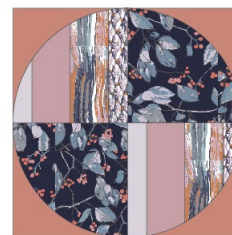




DESIGNED BY AGF



FABRICS DESIGNED BY KATARINA ROCCELLA



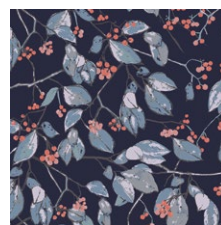
ARIA



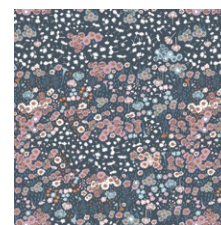
EAR-33950
GAIA EVENTIDE



EAR-33951
MIGRATION NORTH



EAR-33952
SEREIN BRANCHLET



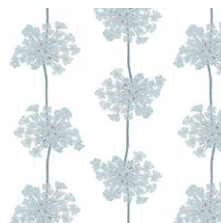
EAR-33954
FLORA FIELDS FLAX



EAR-33955
ICE FORESTRY



EAR-33957
ALLIUM SPECKS ROSE



EAR-33958
GROUNDED GLACIAL

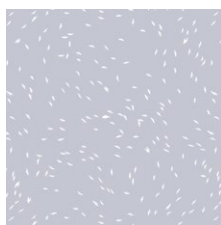


EAR-33959
BENEATH OUR FEET

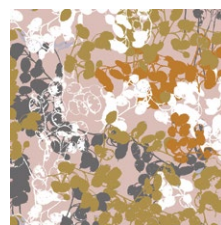
TERRA



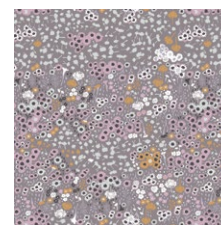
EAR-43950
GAIA SUNSHINE



EAR-43951
MIGRATION SOUTH



EAR-43953
GENTLE LUNARIA



EAR-43954
FLORA FIELDS ANEMONE



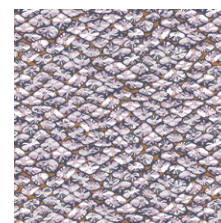
EAR-43956
FOXNEST HAZE



EAR-43957
ALLIUM SPECKS PURE



EAR-43958
GROUNDED TIERRA



EAR-43960
EARTHING SEEDS



FEEL THE DIFFERENCE © 2019 Courtesy of Art Gallery Quilts LLC. All Rights Reserved.



FINISHED SIZE | 12" X 12"

FABRIC REQUIREMENTS

Block 1

Fabric A	EAR-33950	F8
Fabric B	EAR-33955	F8
Fabric C	EAR-33951	F8
Fabric D	PE-408	F8
Fabric E	PE-465	F8
Fabric F	PE-419	FQ

Block 2

Fabric A	EAR-33952	F8
Fabric B	EAR-43960	F8
Fabric C	EAR-33959	F8
Fabric D	PE-425	F8
Fabric E	PE-470	F8
Fabric F	PE-472	FQ

Block 3

Fabric A	EAR-43953	F8
Fabric B	EAR-43954	F8
Fabric C	PE-419	F8
Fabric D	PE-421	F8
Fabric E	PE-408	F8
Fabric F	PE-445	FQ

Block 4

Fabric A	EAR-43950	F8
Fabric B	EAR-43957	F8
Fabric C	PE-485	F8
Fabric D	PE-408	F8
Fabric E	PE-445	F8
Fabric F	PE-425	FQ

CUTTING DIRECTIONS

$\frac{1}{4}$ " seam allowances are included.
WOF means width of fabric.

1. Cut one (1) 15" x 2½" strips from fabric B, C, D, E.
2. Cut one (1) 14" x 9" rectangle from fabric A

Sub Cut:

- One (1) Template 1.
- One (1) Template 2.

3. Cut four (4) Template 3 from fabric F

CONSTRUCTION

Sew all rights sides together with $\frac{1}{4}$ " seam allowance.

- Sew the 15" x 2½" strips from fabric E, D, C, B.
- Place Template 1 and 2 on the sewn block and cut around.

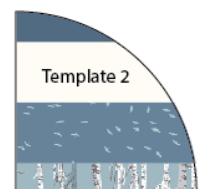
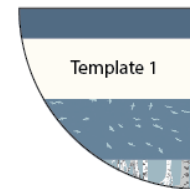
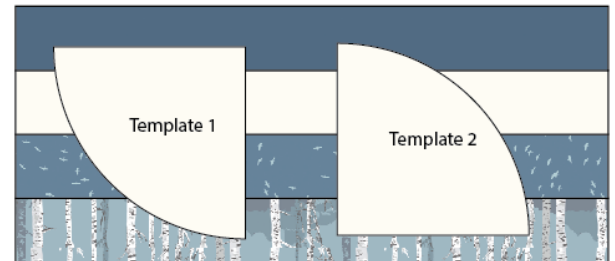


DIAGRAM 1

- Place Template 1 and 2 on the sewn block and cut around.

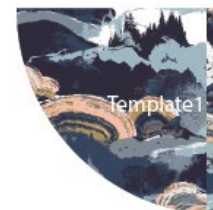


DIAGRAM 2

- Attach fabric F template 3 to templates 1 and 2.

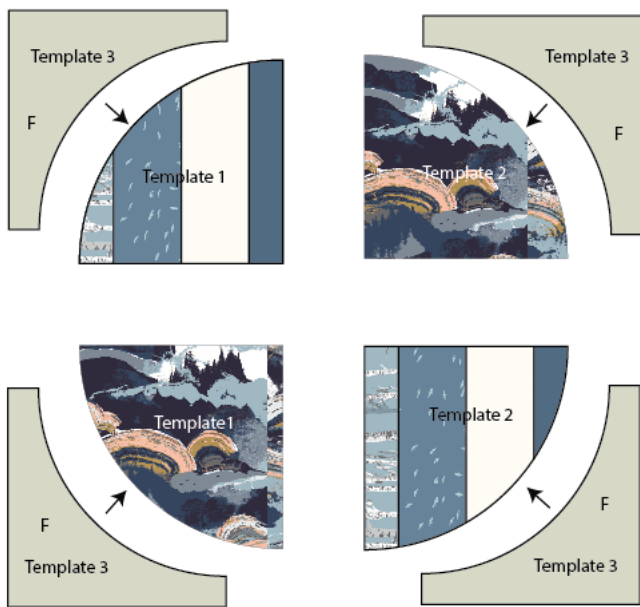


DIAGRAM 3

- Row 1: Sew B1 to B2.
- Row 2: Sew B3 to B4

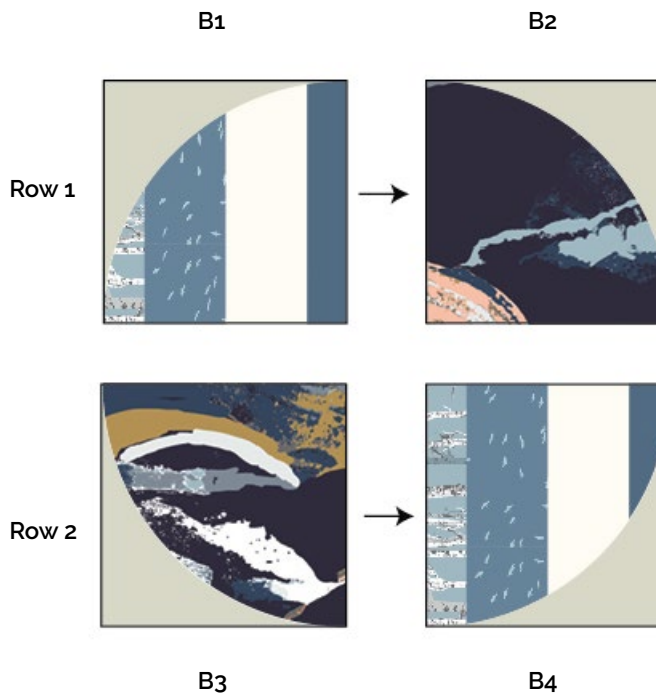


DIAGRAM 4

- Sew Row 1 and 2.

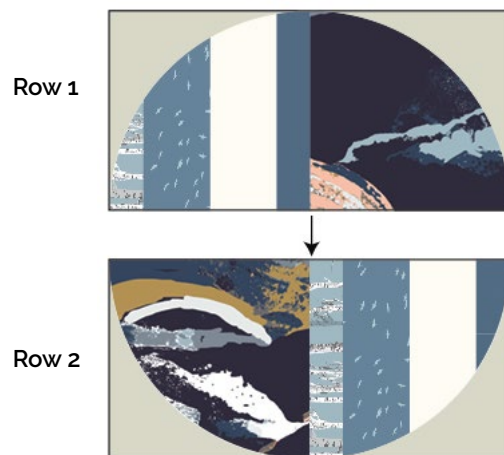


DIAGRAM 5

Block 1

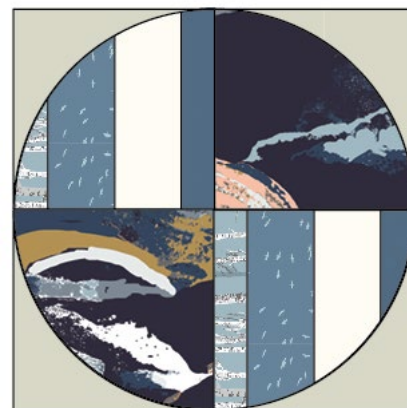


DIAGRAM 6

Repeat the same step with the other blocks.



FEEL THE DIFFERENCE

artgalleryfabrics.com

NOTE: While all possible care has been taken to ensure the accuracy of this pattern, We are not responsible for printing errors or the way in which individual work varies. Please read instructions carefully before starting the construction of this quilt. If desired, wash and iron your fabrics before starting to cut.

© 2019 Courtesy of Art Gallery Quilts LLC. All Rights Reserved.

