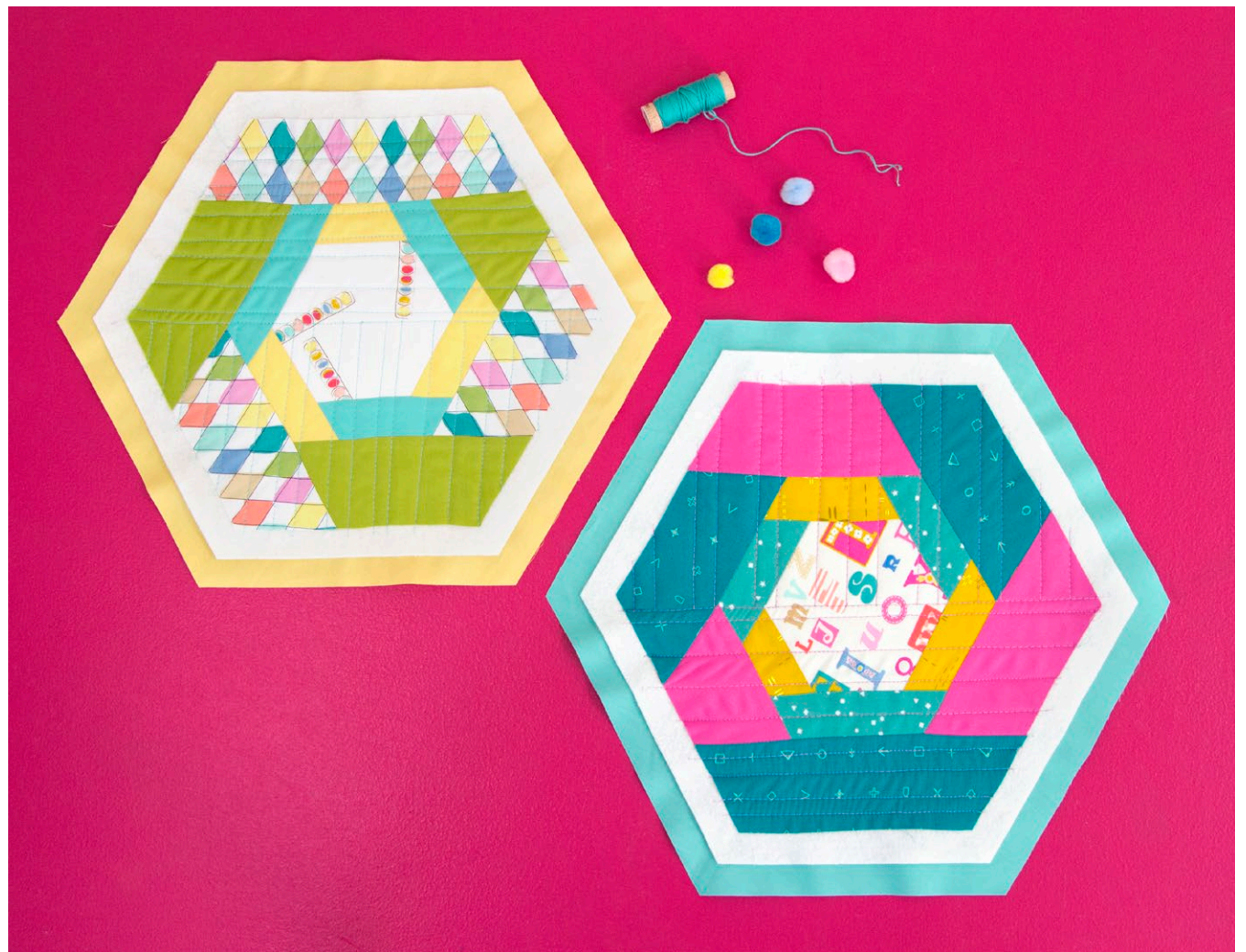


X
X
X
X
X
X
X
X
X
X
X

Playing Cabin



XXXXXXXXXXXXXXXXXXXXXXXXXXXX

ANGLES

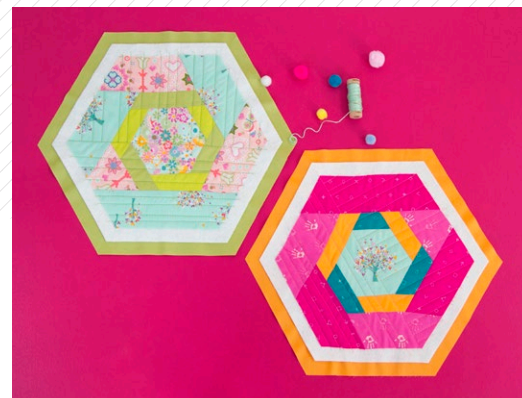
A DIVISION OF AGF

Playing Cabin

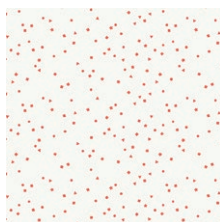
DESIGNED BY AGF STUDIO

PLAYROOM

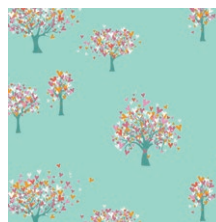
FABRICS DESIGNED BY MISTER DOMESTIC



PLR-89800
A HAPPY LIFE



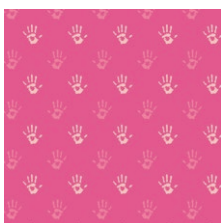
PLR-89801
TEENY CONFETTI CANDY



PLR-89802
GROWING HEARTS



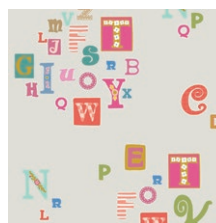
PLR-89803
FUNLOVING



PLR-89804
FINGERPAINT PINK



PLR-89805
BELLE AQUARELLE



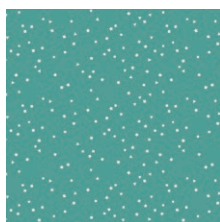
PLR-89806
AS EASY AS ABC



PLR-89807
FLOWERS ALL AROUND



PLR-89808
COLOR MY WORLD



PLR-89809
TEENY CONFETTI MINT



PLR-89810
PLAYROOM RULES



PLR-89811
FINGERPRINT COBALT



FEEL THE DIFFERENCE © 2019 Courtesy of Art Gallery Quilts LLC. All Rights Reserved.

Playing Cabin

FINISHED SIZE | 10" x 12"

FABRIC REQUIREMENTS

Block 1

Fabric A	PLR-89806	FQ.
Fabric B	PLR-89809	FQ.
Fabric C	DSE-706	FQ.
Fabric D	ICE-207	FQ.
Fabric E	PE-404	FQ.

Block 2

Fabric A	PLR-89805	FQ.
Fabric B	PE-435	FQ.
Fabric C	PE-424	FQ.
Fabric D	PLR-89803	FQ.
Fabric E	PE-414	FQ.

Block 3

Fabric A	PLR-89802	FQ.
Fabric B	ICE-207	FQ.
Fabric C	PE-449	FQ.
Fabric D	ICE-204	FQ.
Fabric E	PLR-89804	FQ.

Block 4

Fabric A	PLR-89807	FQ.
Fabric B	PE-423	FQ.
Fabric C	PE-416	FQ.
Fabric D	PLR-89802	FQ.
Fabric E	PLR-89800	FQ.

CUTTING DIRECTIONS

$\frac{1}{4}$ " seam allowances are included.
WOF means width of fabric.

One (1) Hexie template from fabric A.

Three (3) $1\frac{1}{2}$ " x 6" strips from fabrics B and C.

Three (3) $2\frac{1}{2}$ " x 12" strips from fabrics D and E.

CONSTRUCTION

Sew all rights sides together with $\frac{1}{4}$ " seam allowance.

- We will be constructing a lock cabin around the hexie template.
- Start by taking the Template from fabric A and the $1\frac{1}{2}$ " x 6" strips from fabrics B and C.
- Sew one B strip on the top edge of the hexie.



DIAGRAM 1

- Use your quilting ruler and the rotary cutter to trim the excess fabric from B strip.

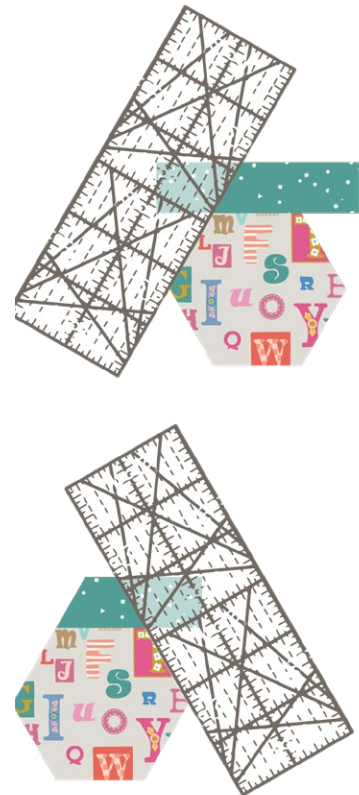


DIAGRAM 2

- Now, sew one **C** strip on the right top edge of the hexie.



DIAGRAM 3

- As you previously did for the first strip, use your quilting ruler and the rotary cutter to trim the excess fabric from strip.



DIAGRAM 4

- Keep adding the **B** and **C** strips on the remaining hexie edges going clockwise and alternating the fabric strips.
- Attach and trim until you are done with all the **B** and **C** strips.



DIAGRAM 4

- Now bring the 2½" x 12" strips from fabrics **D** and **E**.
- Sew one **D** strip on the top edge of the hexie.



DIAGRAM 5

- Use your quilting ruler and the rotary cutter to trim the excess fabric from **D** strip.



DIAGRAM 6

- Now, sew one **E** strip on the right top edge of the hexie.



DIAGRAM 7

- Trim the excess fabric from strip.



DIAGRAM 8

- Keep adding the **D** and **E** strips on the remaining hexie edges going clockwise and alternating the fabric strips.
- Attach and trim until you are done with all the **D** and **E** strips.



XXXXXXXXXXXXXXXXXXXXXXXXXXXX



DIAGRAM 9



artgalleryfabrics.com

NOTE: While all possible care has been taken to ensure the accuracy of this pattern, We are not responsible for printing errors or the way in which individual work varies. Please read instructions carefully before starting the construction of this quilt. If desired, wash and iron your fabrics before starting to cut.

© 2019 Courtesy of Art Gallery Quilts LLC. All Rights Reserved.

