

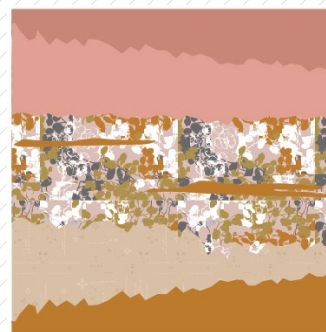
Lunaria Pillow



Lunaria Pillow

Earthen

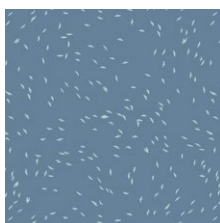
FABRICS DESIGNED BY KATARINA ROCCELLA



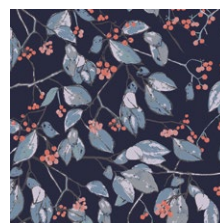
ARIA



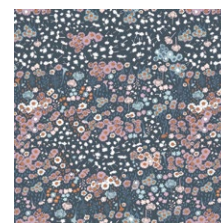
EAR-33950
GAIA EVENTIDE



EAR-33951
MIGRATION NORTH



EAR-33952
SEREIN BRANCHLET



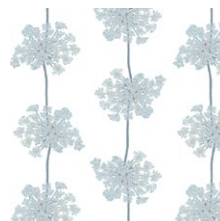
EAR-33954
FLORA FIELDS FLAX



EAR-33955
ICE FORESTRY



EAR-33957
ALLIUM SPECKS ROSE



EAR-33958
GROUNDED GLACIAL

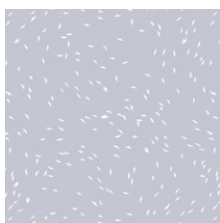


EAR-33959
BENEATH OUR FEET

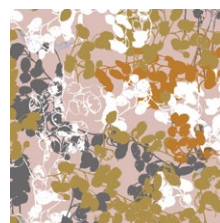
TERRA



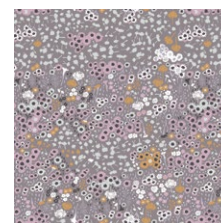
EAR-43950
GAIA SUNSHINE



EAR-43951
MIGRATION SOUTH



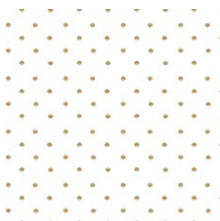
EAR-43953
GENTLE LUNARIA



EAR-43954
FLORA FIELDS ANEMONE



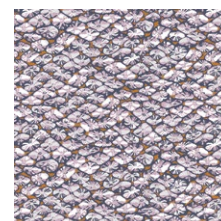
EAR-43956
FOXNEST HAZE



EAR-43957
ALLIUM SPECKS PURE



EAR-43958
GROUNDED TIERRA



EAR-43960
EARTHING SEEDS



FEEL THE DIFFERENCE © 2019 Courtesy of Art Gallery Quilts LLC. All Rights Reserved.

Lunaria Pillow

FINISHED SIZE | 20" x 20"

FABRIC REQUIREMENTS

Fabric A	PE-472	¼ yd.
Fabric B	PE-488	¼ yd.
Fabric C	EAR-43953	½ yd.
Fabric D	DSE-715	¼ yd.
Fabric E	PE-485	⅔ yd.

BACKING FABRIC

EAR-43953 ⅔ yd. *(Suggested)*

ADDITIONAL MATERIAL

- 18" zipper
- Steam-a-seam double side fusible tape

CUTTING DIRECTIONS

¼" seam allowances are included.
WOF means width of fabric.

- One (1) of Template 1 from Fabric A
- One (1) of Template 2 from Fabric B
- One (1) 20½" x 17½" rectangle from Fabric C
- One (1) of Template 4 from Fabric D
- One (1) 20½" x 20½" square from Fabric E

CONSTRUCTION

Sew all rights sides together with ¼" seam allowance.

- Take Fabric C rectangle and place it on top of Fabric E 20½" x 2½" square.



DIAGRAM 1

- Take Fabric C rectangle and place it on top of Fabric E 20½" x 2½" square.



DIAGRAM 2

- Place Template 1, lining up to the top and securing it with steam a seam.

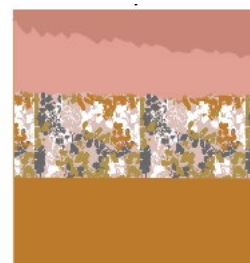


DIAGRAM 3

- Finish with Template 3 on the bottom, leaving about 1" distance from Fabric E.

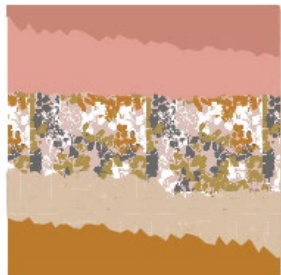
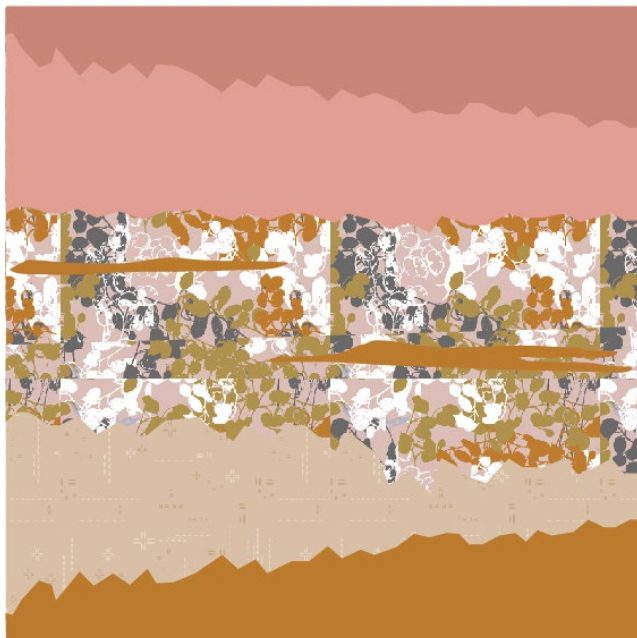


DIAGRAM 4

- For the center of the pillow, we will be doing reverse applique, so apply free motion technique and quilt some parts of Fabric C and to reveal Fabric E, use a small scissor and cut as close as the stitch as possible.



CREATING THE BACK PILLOW

Sew all rights sides together with 1/4" seam allowance. Press open.

Adding the zipper to the pillow cover

- With the 18" zipper open, place one edge right side down on the bottom edge of one side of the pillow cover. Make sure the zipper coil faces towards the inside of the pillow and the edge of the zipper tape is flush with the raw edge of the pillow cover. Pin in place.
- Begin sewing at one end of the zipper, back stitching as you begin.
- After stitching one side of the zipper, close the zipper and carefully line-up the other side of the pillow cover, matching raw edges. Pin the edge of the zipper to the other bottom edge of the pillow cover.
- Open the zipper again before sewing.
- After stitching, bring the pillow cover to your iron and press this seam well. Make sure the seams on each side of the zipper are pressed open.
- Flip the pillow cover right sides together, matching raw edges, and pin around the other 3 sides. Make sure to open the zipper before stitching.
- Trim the the corner edges and flip your piece inside out.



artgalleryfabrics.com

NOTE: While all possible care has been taken to ensure the accuracy of this pattern, We are not responsible for printing errors or the way in which individual work varies. Please read instructions carefully before starting the construction of this quilt. If desired, wash and iron your fabrics before starting to cut.

© 2019 Courtesy of Art Gallery Quilts LLC. All Rights Reserved.

Template 1

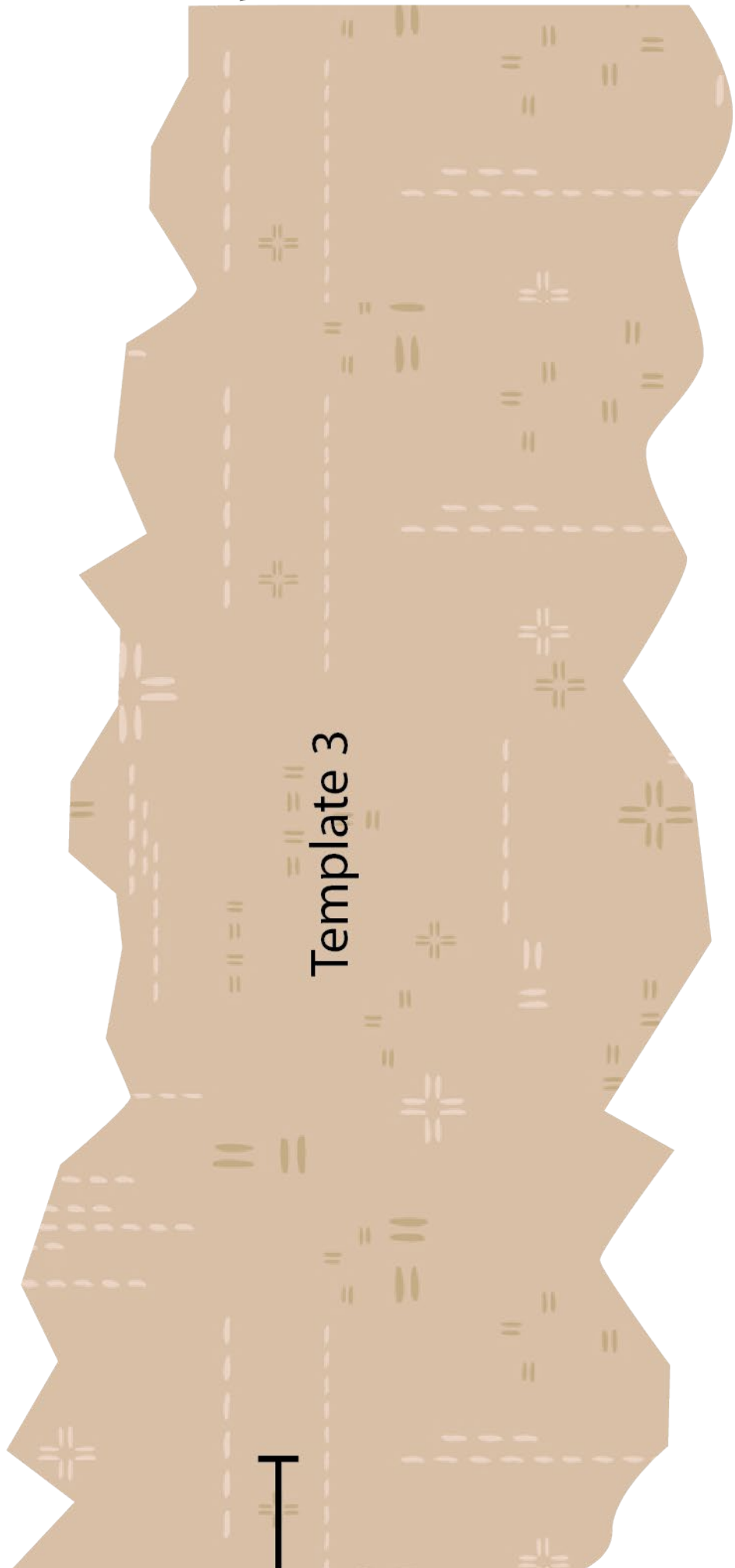
XX



Template 2

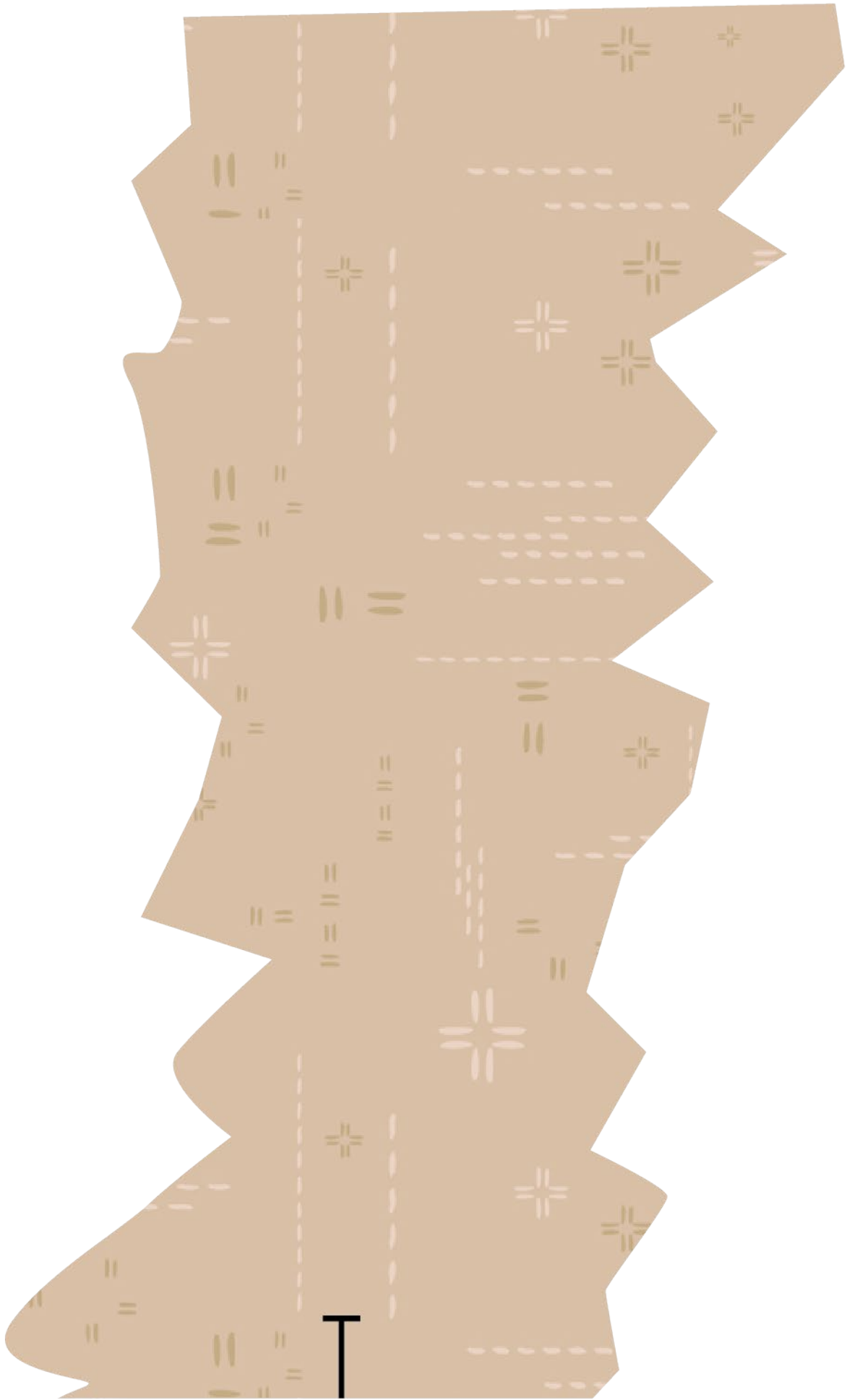
XXXXXXXXXXXXXXXXXXXXXXXXXXXX

T



Template 3





T