

Cradle Arranger



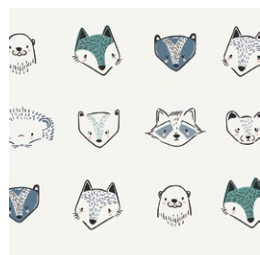
capsules
by AGF

Cradle Arranger

DESIGNED BY AGFstudio

pine LULLABY rediscovered

FABRICS DESIGNED BY AGFstudio



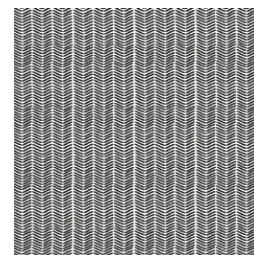
CAP-PL-1300
FURRIES COOL



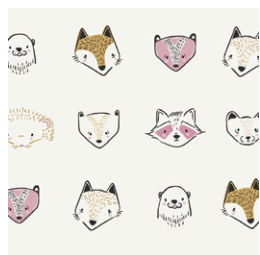
CAP-PL-1301
SNUGGERY BREEZE



CAP-PL-1302
LOBLOLLY PINE



CAP-PL-1304
LINE MARKINGS



CAP-PL-1305
FURRIES SWEET



CAP-PL-1306
SNUGGERY WARMTH



CAP-PL-1308
ETCHINGS NECTAR



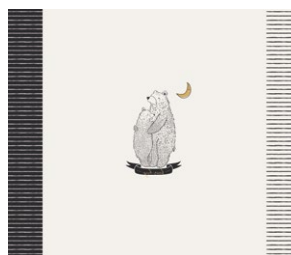
CAP-PL-1310
MOUNTAIN PINES



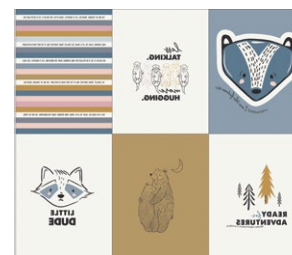
CAP-PL-1311
STAR GLOW



CAP-PL-1312
FOREST TRAILS



CAP-PL-1313
BEAR HUG PANEL



CAP-PL-1314
ENJOY THE LITTLE THINGS PANEL



FEEL THE DIFFERENCE © 2019 Courtesy of Art Gallery Quilts LLC. All Rights Reserved.

- Rotate it and trim it to end up with a 6¾" x 10" rectangle.
- Set aside.

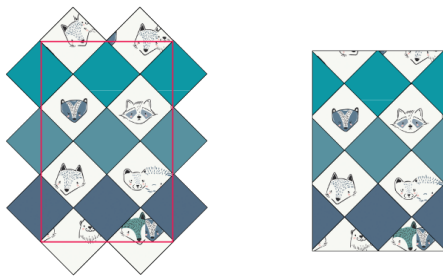


DIAGRAM 2

- For Pocket #2 take the eight (8) Eight (8) 4" squares from fabric **J**, and arrange them by rows along with the 4" square from fabrics **D**, **E** and **I**.
- Sew rows together and press.

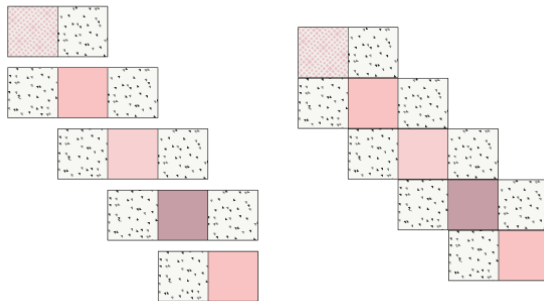


DIAGRAM 3

- Rotate it and trim it to end up with a $19\frac{1}{2}" \times 4\frac{3}{4}"$ rectangle.
- Set aside.

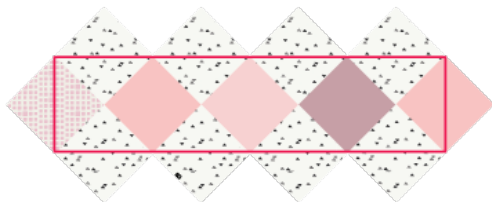


DIAGRAM 4

- For Pocket #3 take three 2¼ x 16" fussy cut strips from fabric **L** and sew alternating it with fabric **M** strips.
- Press open.
- Rotate the block and cut a 7½ x 5¼" rectangle.
- Set aside.

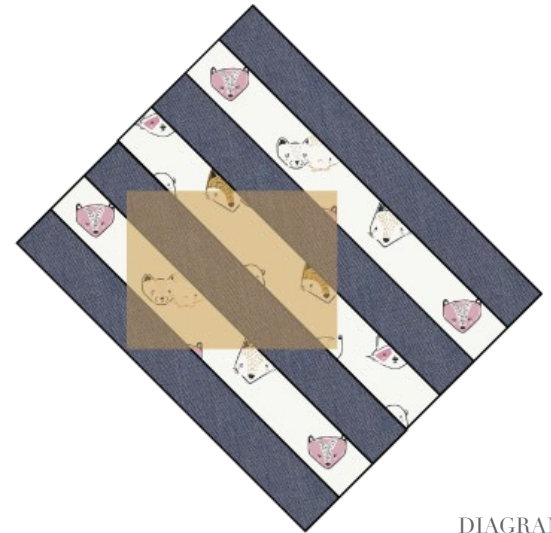
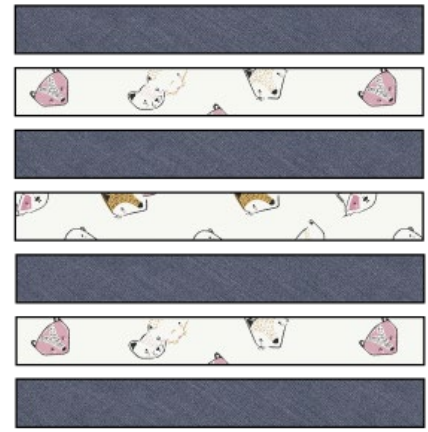


DIAGRAM 5

- Take all the pockets including the panel pockets and using the left overs from fabric K cut the lining pieces for each pocket.
- Take Pocket #1 with its respective lining piece and place both fabrics facing right sides of fabric together.
- Sew around leaving an opening to turn the pocket inside out.
- Turn it over and press.
- Repeat the same procedure for each pocket set aside.



DIAGRAM 6

ASSEMBLY

Sew rights sides together.

- Place BACKING FABRIC on a large surface wrong side up. Stretch it with masking tape against that surface.
- Place BATTING on top of backing fabric.
- Place TOP on top of the batting with right side facing up. Smooth away wrinkles using your hands.
- Pin all layers together and baste with basting thread, using long stitches. You can also use safety pins to join the layers.
- Machine or hand quilt starting at the center and working towards the corners. Remember that quilting motifs are a matter of personal preference. Have fun choosing yours!
- After you finished, trim excess of any fabric or batting, squaring the quilt to proceed to bind it.

POCKETS ASSEMBLY

Sew rights sides together.

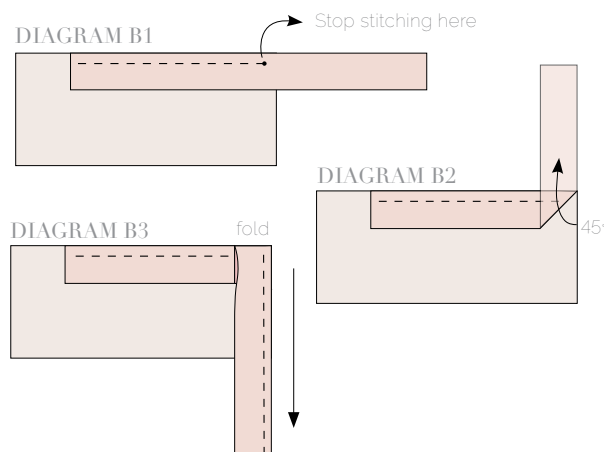
- Place the pockets in the order showed on the Diagram below by sewing top stitching the side edges and bottom of each piece.



BINDING

Sew rights sides together.

- Cut enough strips $1\frac{1}{2}$ ' wide by the width of the fabric **A** to make a final strip 108' long. Start sewing the binding strip in the middle of one of the sides of the quilt, placing the strip right side down and leaving an approximated 5' tail. Sew with $\frac{1}{4}$ ' seam allowance (using straight stitch), aligning the strip's raw edge with the quilt top's raw edge.
- Stop stitching $\frac{1}{4}$ ' before the edge of the quilt (**DIAGRAM B1**). Clip the threads. Remove the quilt from under the machine presser foot. Fold the strip in a motion of 45° and upward, pressing with your fingers (**DIAGRAM B2**). Hold this fold with your finger, bring the strip down in line with the next edge, making a horizontal fold that aligns with the top edge of the quilt (**DIAGRAM B3**). Start sewing at $\frac{1}{4}$ ' of the border, stitching all the layers. Do the same in the four corners of the quilt.
- Stop stitching before you reach the last 5 or 6 inches. Cut the threads and remove the quilt from under the machine presser foot. Lay the loose ends of the binding flat along the quilt edge, folding the ends back on themselves where they meet. Press them together to form a crease. Using this crease as the stitching line, sew the two open ends of the binding with right sides together (you can help yourself marking with a pencil if the crease is difficult to see).
- Trim seam to $\frac{1}{4}$ ' and press open. Complete the sewing. Turn binding to back of the quilt, turn raw edge inside and stitch by hand using blind stitch.





FEEL THE DIFFERENCE

artgalleryfabrics.com

NOTE: While all possible care has been taken to ensure the accuracy of this pattern, We are not responsible for printing errors or the way in which individual work varies.
Please read instructions carefully before starting the construction of this quilt. If desired, wash and iron your fabrics before starting to cut.

© 2019 Courtesy of Art Gallery Quilts LLC. All Rights Reserved.