



Cottage



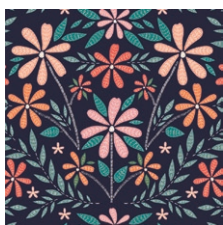
Cottage

Meriwether

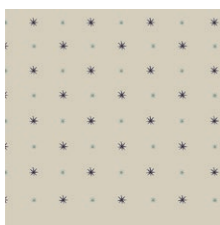
FABRICS DESIGNED BY AGF STUDIO



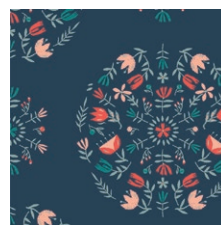
GARDENLAND



MEW-36300
COTTAGE GARDEN STILL



MEW-36301
GLIMMER & GLOW



MEW-36302
MEADOW MANDALA SLUMBER



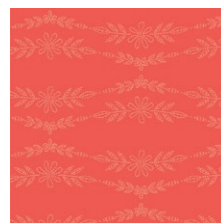
MEW-36303
WISPY CLOUDS DREAM



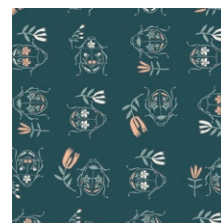
MEW-36304
COTTONTAIL PLAYFUL



MEW-36305
FORGET-ME-NOT HIDEAWAY



MEW-36306
EMBROIDERED GARLAND PEONY

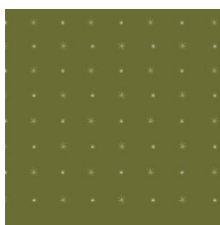


MEW-36307
JUNE BUG WALTZ

NATUREWALK



MEW-46300
COTTAGE GARDEN BLOOM



MEW-46301
GLIMMER & GLISTEN



MEW-46302
MEADOW MANDALA AWAKEN



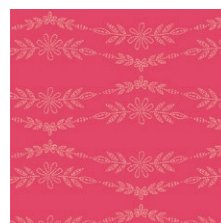
MEW-46303
WISPY CLOUDS GAZE



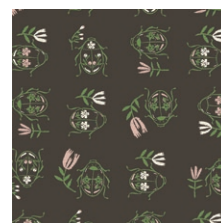
MEW-46304
COTTONTAIL EXPLORE



MEW-46305
FORGET-ME-NOT FOREST



MEW-46306
EMBROIDERED GARLAND ROSE



MEW-46307
JUNE BUG TWIRL



FEEL THE DIFFERENCE © 2019 Courtesy of Art Gallery Quilts LLC. All Rights Reserved.

Cottage

FINISHED SIZE | 12" x 12"

FABRIC REQUIREMENTS

Block 1

Fabric A	PE-414	FQ.
Fabric B	PE-466	FQ.
Fabric C	DEN-S-2004	FQ.
Fabric D	DEN-OYD-6000	FQ.
Fabric E	MEW-46306	FQ.
Fabric F	MEW-46302	FQ.

Block 2

Fabric A	MEW-36306	FQ.
Fabric B	MEW-46306	FQ.
Fabric C	DEN-L-4000	FQ.
Fabric D	DEN-S-2007	FQ.
Fabric E	FE-517	FQ.
Fabric F	MEW-46301	FQ.

Block 3

Fabric A	PE-460	FQ.
Fabric B	PE-458	FQ.
Fabric C	MEW-36301	FQ.
Fabric D	FE-517	FQ.
Fabric E	MEW-46304	FQ.
Fabric F	MEW-46305	FQ.

Block 4

Fabric A	PE-411	FQ.
Fabric B	PE-420	FQ.
Fabric C	MEW-36307	FQ.
Fabric D	MEW-46302	FQ.
Fabric E	MEW-46303	FQ.
Fabric F	MEW-36303	FQ.

CUTTING DIRECTIONS

*1/4" seam allowances are included.
WOF means width of fabric.*

One (1) 4½" square from fabric A.

Two (2) 5¾" squares from fabrics A and B.

Four (4) 2½" squares from fabrics C and F.

Eight (8) 2" squares from fabrics C and F.

Four (4) 4½" squares from fabric D.

Twelve (12) 2½" squares from fabric E.

CONSTRUCTION

Sew all right sides together with 1/4" seam allowance.

- Start taking four 2½" squares from fabric E and one 4½" square from fabric A.



DIAGRAM 1

- Place the 4½" square from fabric A facing you and start placing the 2½" squares from fabric E one by one facing right sides of fabric together.
- Align the fabric E squares to each of the fabric A square corners.
- Make a diagonal seam on top of each fabric E squares.

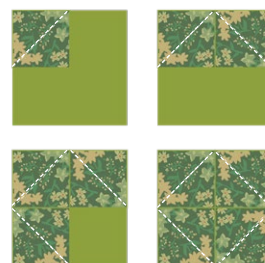


DIAGRAM 2

- Trim the corners down, make sure you leave a ¼" seam allowance from the seam.
- Press open and set aside.



DIAGRAM 3

- Now, take one 2½" square from fabric **C** and **F**, two 2½" squares from fabric **E** and one 4½" square from fabric **D**.



DIAGRAM 4

- Repeat the previous steps made for the past piece but using the following fabrics combination.



DIAGRAM 5

- Trim the corners down, make sure you leave a ¼" seam allowance from the seam.
- Press open and set aside.
- Make a total of four for the block construction.



DIAGRAM 6

- Now it is time to construct an hour glass block.
- Start taking one 5¾" square from fabrics **A** and **B**.
- Make a HST using the two squares, you'll end up with two HST.
- Sub-cut the two **AB** HST diagonally, you'll end up with four half squares.
- Use the half squares to create two hour glass blocks as shown in the diagram below.
- Repeat one more time to make a total of four Hour glass blocks.
- Set aside.



DIAGRAM 7

- Take two 2" from fabrics **C** and **F**.



DIAGRAM 8

- Attach one **C** and **F** squares together then make one more **FC**.
- Attach **CF** and **FC** together.

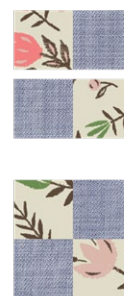


DIAGRAM 9

- Place the template on top of the previous made piece.
- Align the cross in the template to the seams and cut it.
- Make a total of four.

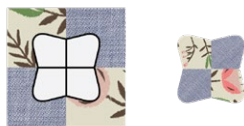


DIAGRAM 10

- Bring the hour glass blocks previously made and place the template star on top of it.
- Align it to center and using Steam-A-Seam applique on top.
- Top stitch if desire to hold it or make sure to stitch on top when quilting.



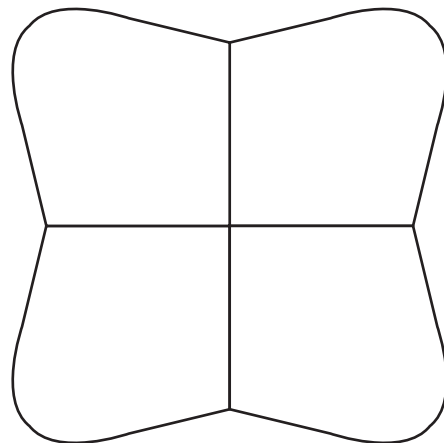
DIAGRAM 11

- Take all the previous made pieces and follow the diagram below for blocks placement.
- Make three rows with three blocks each.
- Attach the blocks together by row and then start attaching the rows together to create the quilt block.



DIAGRAM 12

TEMPLATE



artgalleryfabrics.com

NOTE: While all possible care has been taken to ensure the accuracy of this pattern, We are not responsible for printing errors or the way in which individual work varies. Please read instructions carefully before starting the construction of this quilt. If desired, wash and iron your fabrics before starting to cut.

© 2019 Courtesy of Art Gallery Quilts LLC. All Rights Reserved.