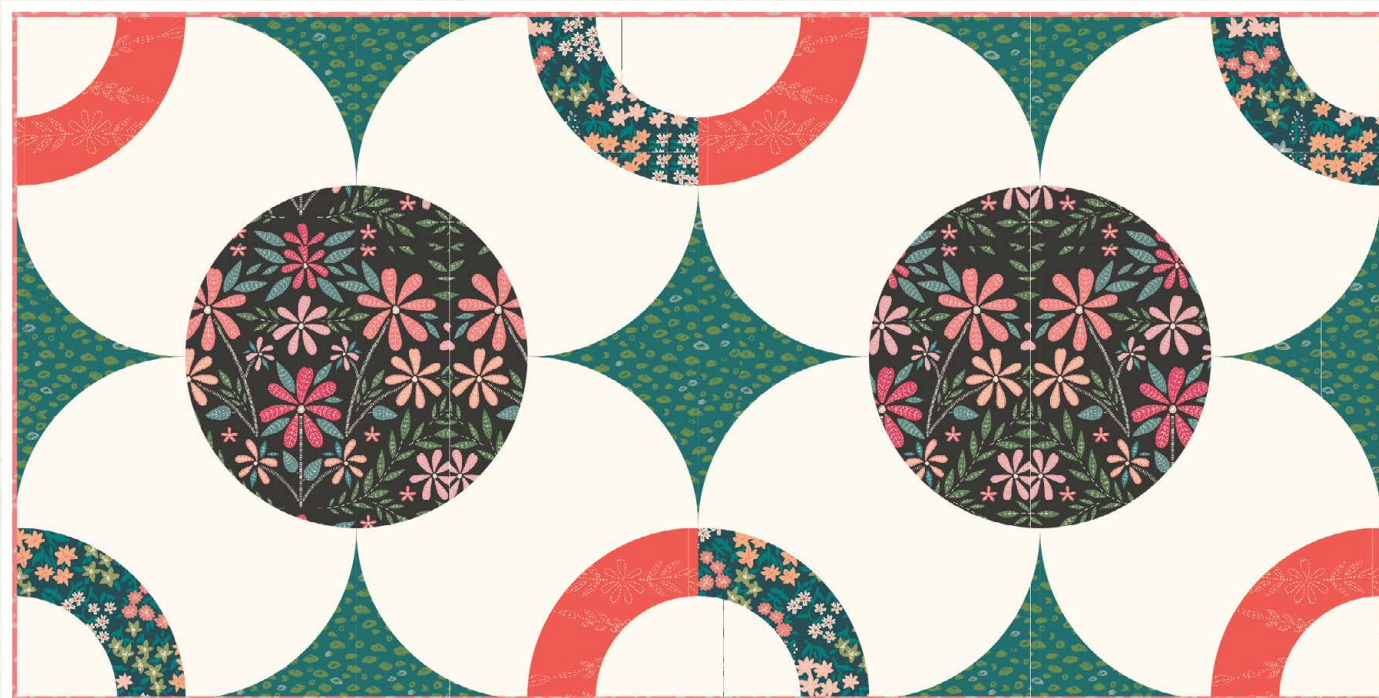


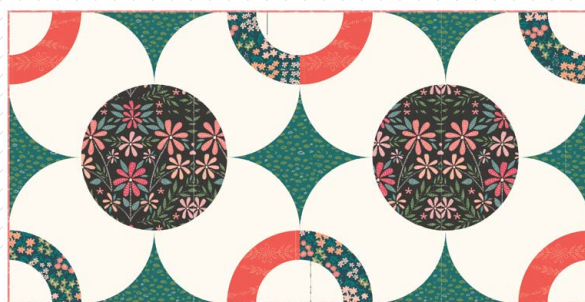
Whisper



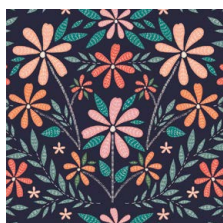
Whispery

Meriwether

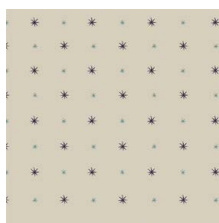
FABRICS DESIGNED BY AGF STUDIO



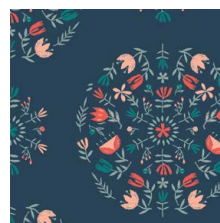
GARDENLAND



MEW-36300
COTTAGE GARDEN STILL



MEW-36301
GLIMMER & GLOW



MEW-36302
MEADOW MANDALA SLUMBER



MEW-36303
WISPY CLOUDS DREAM



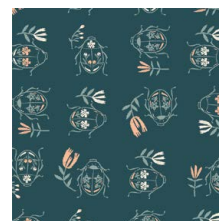
MEW-36304
COTTONTAIL PLAYFUL



MEW-36305
FORGET-ME-NOT HIDEAWAY



MEW-36306
EMBROIDERED GARLAND PEONY

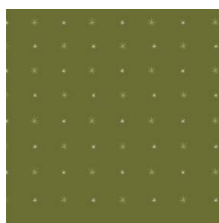


MEW-36307
JUNE BUG WALTZ

NATUREWALK



MEW-46300
COTTAGE GARDEN BLOOM



MEW-46301
GLIMMER & GLISTEN



MEW-46302
MEADOW MANDALA AWAKEN



MEW-46303
WISPY CLOUDS GAZE



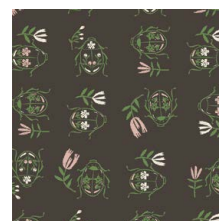
MEW-46304
COTTONTAIL EXPLORE



MEW-46305
FORGET-ME-NOT FOREST



MEW-46306
EMBROIDERED GARLAND ROSE



MEW-46307
JUNE BUG TWIRL



FEEL THE DIFFERENCE © 2019 Courtesy of Art Gallery Quilts LLC. All Rights Reserved.



FINISHED SIZE | 40" x 20"

FABRIC REQUIREMENTS

Fabric A	MEW-46300	1/3 yd.
Fabric B	MEW-36305	1/4 yd.
Fabric C	MEW-36303	1/2 yd.
Fabric D	MEW-36306	1/4 yd.
Fabric E	Plush Fabric	7/8 yd.

BACKING FABRIC

DEN-CT-8000 5/8 yds. *(suggested)*

BINDING FABRIC

MEW-36306 (Fabric D) *(included)*

CUTTING DIRECTIONS

1/4" seam allowances are included.
WOF means width of fabric.

- Eight (8) Template 1 from fabric A.
- Four (4) Template 2 from fabric B.
- Sixteen (16) Template 3 from fabric C.
- Four (4) Template 2 from fabric D.
- Sixteen (16) Template 1 from fabric E.
- Sixteen (16) Template 3 from fabric E.
- Eight (8) Template 4 from fabric E.

CONSTRUCTION

Sew all rights sides together with 1/4" seam allowance.

Block a (x 8):

- Take eight (8) Template 1 from fabric A and eight (8) Template 3 from fabric E.
- Join them following Diagram 1.



DIAGRAM 1

Block b (x 16):

- Take sixteen (16) Template 1 from fabric E and sixteen (16) Template 3 from fabric C.
- Join them following Diagram 2.

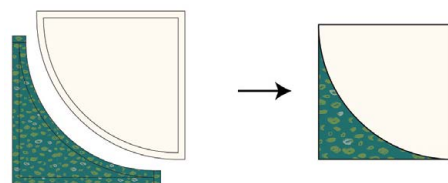


DIAGRAM 2

Block c (x 4):

- Take four (4) Template 2 from fabric B, four (4) Template 3 from fabric E, and four (4) template 4 from fabric E.
- Join them following Diagram 3.

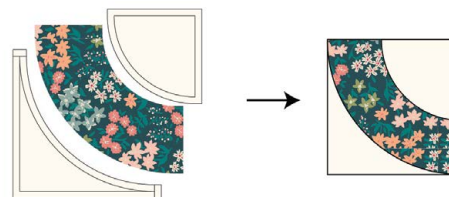


DIAGRAM 3

Block d (x 4):

- Take four (4) Template 2 from fabric **D**, four (4) Template 3 from fabric **E**, and four (4) template 4 from fabric **E**.
- Join them following Diagram 4.

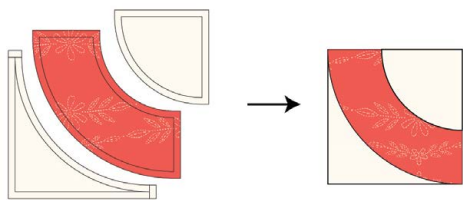


DIAGRAM 4

ASSEMBLING THE TOP

Sew all rights sides together with 1/4" seam allowance. Press open.

- Join the blocks into the following rows:
- Row 1: d b b c d b b c
- Row 2: b a a b b a a b
- Row 3: b a a b b a a b
- Row 4: c b b d c b b d

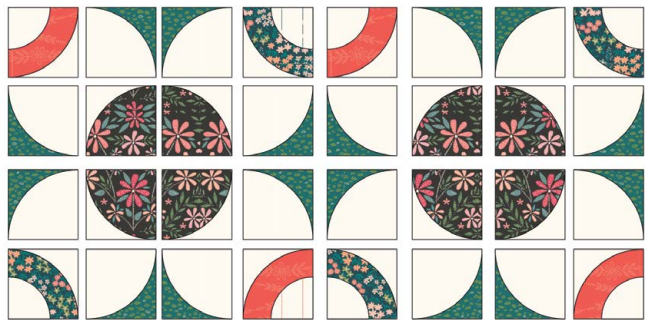


DIAGRAM 5

QUILT ASSEMBLY

Sew rights sides together.

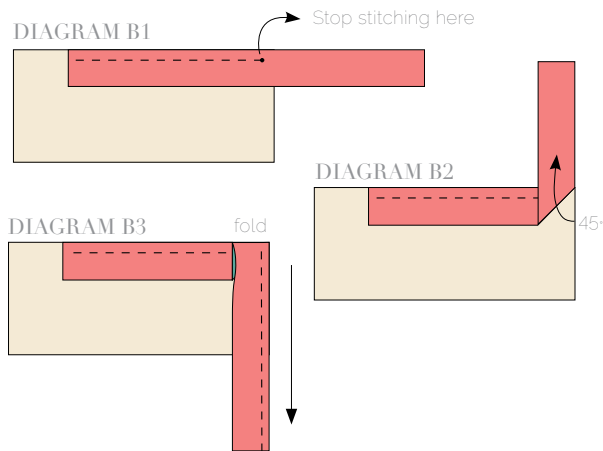
- Place **BACKING FABRIC** on a large surface wrong side up. Stretch it with masking tape against that surface.
- Place **BATTING** on top of backing fabric.
- Place **TOP** on top of the batting with right side facing up. Smooth away wrinkles using your hands.
- Pin all layers together and baste with basting thread, using long stitches. You can also use safety pins to join the layers.
- Machine or hand quilt starting at the center and working towards the corners. Remember that quilting motifs are a matter of personal preference. Have fun choosing yours!
- After you finished, trim excess of any fabric or batting, squaring the quilt to proceed to bind it.

BINDING

Sew rights sides together.

- Cut enough strips 1 1/2" wide by the width of the fabric **D** to make a final strip 290" long. Start sewing the binding strip in the middle of one of the sides of the quilt, placing the strip right side down and leaving an approximated 5" tail. Sew with 1/4" seam allowance (using straight stitch), aligning the strip's raw edge with the quilt top's raw edge.
- Stop stitching 1/4" before the edge of the quilt (DIAGRAM B 1). Clip the threads. Remove the quilt from under the machine presser foot. Fold the strip in a motion of 45° and upward, pressing with your fingers (DIAGRAM B2). Hold this fold with your finger, bring the strip down in line with the next edge, making a horizontal fold that aligns with the top edge of the quilt (DIAGRAM B3). Start sewing at 1/4" of the border, stitching all the layers. Do the same in the four corners of the quilt.

- Stop stitching before you reach the last 5 or 6 inches. Cut the threads and remove the quilt from under the machine presser foot. Lay the loose ends of the binding flat along the quilt edge, folding the ends back on themselves where they meet. Press them together to form a crease. Using this crease as the stitching line, sew the two open ends of the binding with right sides together (you can help yourself marking with a pencil if the crease is difficult to see).
- Trim seam to $\frac{1}{4}$ " and press open. Complete the sewing. Turn binding to back of the quilt, turn raw edge inside and stitch by hand using blind stitch.



artgalleryfabrics.com

NOTE: While all possible care has been taken to ensure the accuracy of this pattern, We are not responsible for printing errors or the way in which individual work varies. Please read instructions carefully before starting the construction of this quilt. If desired, wash and iron your fabrics before starting to cut.

