



x x x x x x x x x x x x x x x x x x x

A DIVISION OF AGF





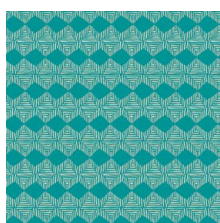
DESIGNED BY AGF STUDIO

*Maara*

FABRICS DESIGNED BY ALEXANDRA BORDALLO



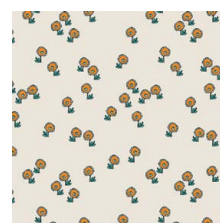
MAA-64900  
MAASAI VILLAGE



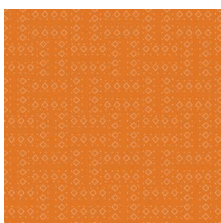
MAA-64901  
KHASA MANTLE



MAA-64902  
JUNGLE TOUR



MAA-64903  
HAPPY LANDING



MAA-64904  
TRAVELED ROADS SUN



MAA-64905  
SEE THE WORLD



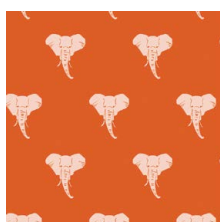
MAA-64906  
FYNBOS VALLEY



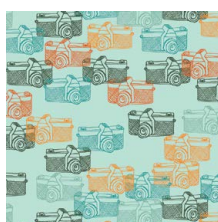
MAA-64907  
SECRET ZEBRA



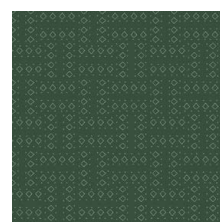
MAA-64908  
NGONG HILLS



MAA-64909  
WILD & MAJESTIC



MAA-64910  
CAPTURED MEMORIES



MAA-64911  
TRAVELED ROADS MOON



FEEL THE DIFFERENCE © 2019 Courtesy of Art Gallery Quilts LLC. All Rights Reserved.



FINISHED SIZE | 10½" x 10½"

## FABRIC REQUIREMENTS

### Block 1

Fabric A	MAA-64905	F8
Fabric B	MAA-64911	F8
Fabric C	PE-474	F8

### Block 2

Fabric A	MAA-64907	F8
Fabric B	MAA-64901	F8
Fabric C	PE-412	F8

### Block 3

Fabric A	MAA-64902	F8
Fabric B	MAA-64908	F8
Fabric C	PE-426	F8

### Block 4

Fabric A	MAA-64909	F8
Fabric B	MAA-64903	F8
Fabric C	PE-442	F8

## CONSTRUCTION

*Sew all rights sides together with ¼" seam allowance.*

- Take two (2) 4¾" x 4¾" squares from fabric A, one (1) 4¾" x 4¾" square from fabric B, and three (3) 4¾" x 4¾" squares from fabric C.
- Pair each square from fabrics A and B with one square from fabric C.
- Do half square triangles:
- Align them face to face, draw a diagonal line, and stitch at ¼" from each side of the drawn line.
- Cut on the drawn line. Open and press.
- As a result you will have two (2) CB and four (4) CA.

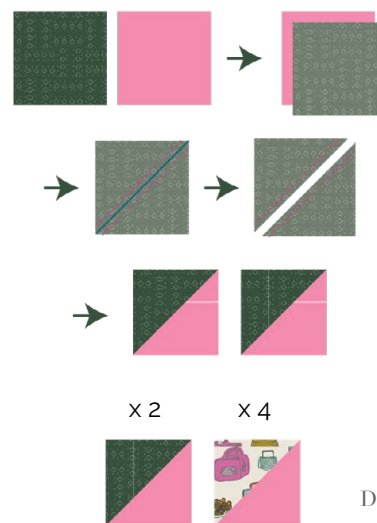
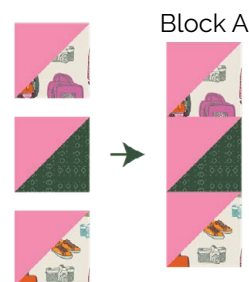


DIAGRAM 1

- Join them into the following blocks:



Block A



Block B

DIAGRAM 2

## CUTTING DIRECTIONS

*¼" seam allowances are included.  
WOF means width of fabric.*

- One (1) 7½" x 7½" squares from fabrics A and C.
- Two (2) 4" x 4" squares from fabric B.
- Two (2) 4¾" x 4¾" squares from fabric A.
- One (1) 4¾" x 4¾" square from fabric B.
- Three (3) 4¾" x 4¾" squares from fabric C.

- Take one (1)  $7\frac{1}{2}$ " x  $7\frac{1}{2}$ " squares from fabrics **A** and **C**.
- Stitch on the diagonal and trim at  $\frac{1}{4}$ " from the stitch.
- Press open.

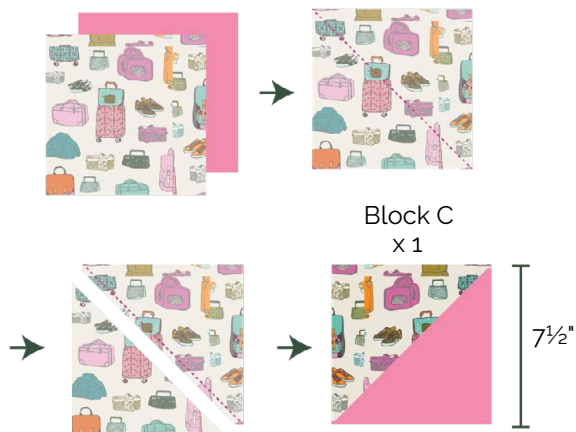


DIAGRAM 3

- Take two (2) 4" x 4" squares from fabric **B**.
- Apply them as corner square triangles to block C following Diagram 4.

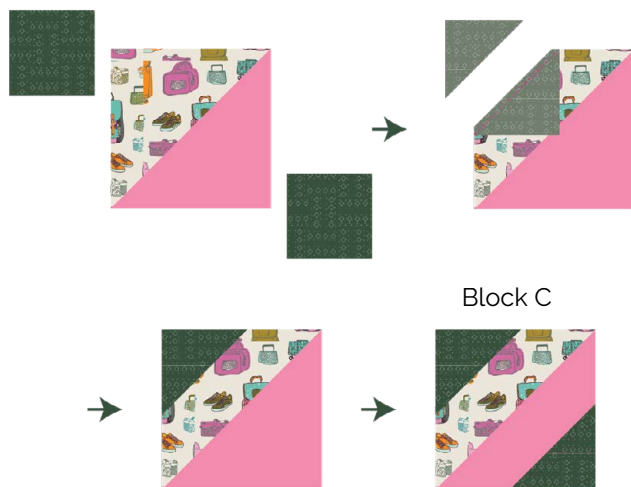


DIAGRAM 4

- Join the resulting blocks as following Diagram 5.

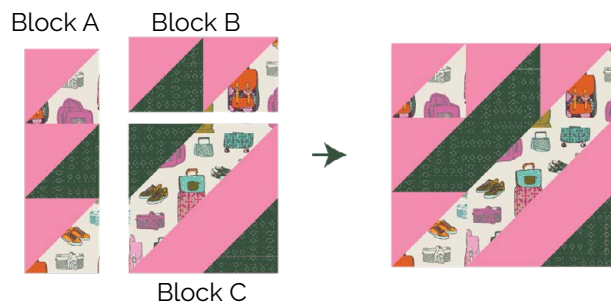


DIAGRAM 5



[artgalleryfabrics.com](http://artgalleryfabrics.com)

NOTE: While all possible care has been taken to ensure the accuracy of this pattern, We are not responsible for printing errors or the way in which individual work varies. Please read instructions carefully before starting the construction of this quilt. If desired, wash and iron your fabrics before starting to cut.