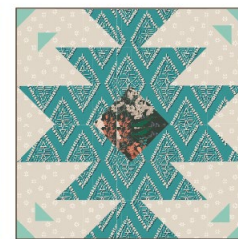






FABRICS DESIGNED BY SHARON HOLLAND



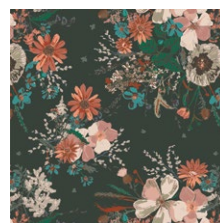
PRAIRIE MOON



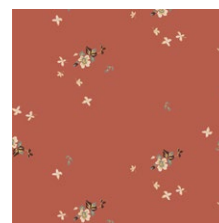
SPT-85220
BOUNDLESS SPIRIT BAND



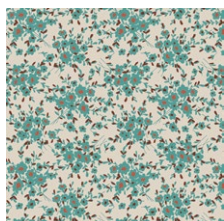
SPT-85221
BRIGHT STAR WASHED



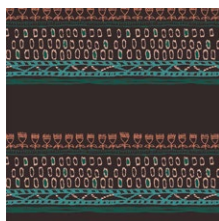
SPT-85223
PAINTED PRAIRIE ANTHESIS



SPT-85224
DELICATE BALANCE SIENNA



SPT-85225
CALICO DAYS AQUA



SPT-85226
EMBELLISHED THREADS DEEP



SPT-85227
RAMBLING ROSE BRIAR

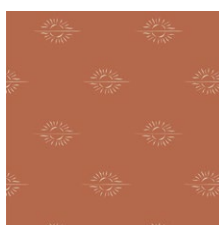


SPT-85229
TRAIL MAKER RANGE

PRAIRIE SUN



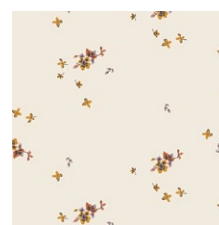
SPT-95220
BOUNDLESS SPIRIT SORREL



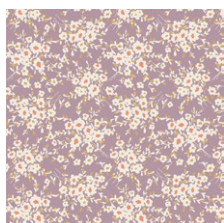
SPT-95222
HORIZON MIRAGE CLAY



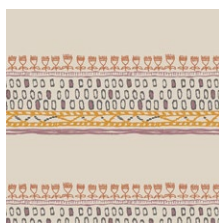
SPT-95223
PAINTED PRAIRIE CORNUCOPIA



SPT-95224
DELICATE BALANCE



SPT-95225
CALICO DAYS LAVENDER



SPT-95226
EMBELLISHED THREADS NOMAD



SPT-95228
DANCE STEP MAIZE



SPT-95230
LOVE AND LEGEND



FEEL THE DIFFERENCE © 2019 Courtesy of Art Gallery Quilts LLC. All Rights Reserved.



FABRIC REQUIREMENTS

Block 1

Fabric A	SPT-95222	F8
Fabric B	SPT-95224	F8
Fabric C	SPT-85226	F8
Fabric D	PE-452	F8

Block 2

Fabric A	FE-526	F8
Fabric B	SPT-95230	F8
Fabric C	SPT-95226	F8
Fabric D	PE-436	F8

Block 3

Fabric A	FE-504	F8
Fabric B	SPT-85224	F8
Fabric C	SPT-95223	F8
Fabric D	PPE-421	F8

Block 4

Fabric A	SPT-85221	F8
Fabric B	SPT-85229	F8
Fabric C	SPT-85223	F8
Fabric D	PE-464	F8

Additional Materials:

Steam A seam double sided fusible tape

CUTTING DIRECTIONS

*1/4" seam allowances are included.
WOF means width of fabric.*

Fabric A:

- Eight (8) $2\frac{1}{2} \times 2\frac{1}{2}$ Squares
- Four (4) $2\frac{1}{2} \times 2$ Rectangles
- Four (4) $2\frac{7}{8} \times 2\frac{7}{8}$ Squares
- Two (2) $4\frac{1}{2} \times 2\frac{1}{2}$ Rectangles

Fabric B:

- Twelve (12) $2\frac{1}{2} \times 2\frac{1}{2}$ Squares
- Four (4) $2\frac{7}{8} \times 2\frac{7}{8}$ Squares
- Two (2) $4\frac{1}{2} \times 2\frac{1}{2}$ Rectangles
- Two (2) $2\frac{1}{2} \times 1\frac{1}{2}$ Rectangles

Fabric C

- One (1) $4\frac{1}{2} \times 4\frac{1}{2}$ Squares

Fabric D

- Eight (8) 1×1 Squares

CONSTRUCTION

Sew all rights sides together with $\frac{1}{4}$ " seam allowance.

For these project we will be using two different methods, the Half Square Triangle method and the Flying Geese method

Half Square Triangle (HST)

- To accomplish the HST construction take the $2\frac{7}{8}$ " squares from fabrics A and B Using a water-soluble marker, mark a diagonal line across the wrong side of all squares.

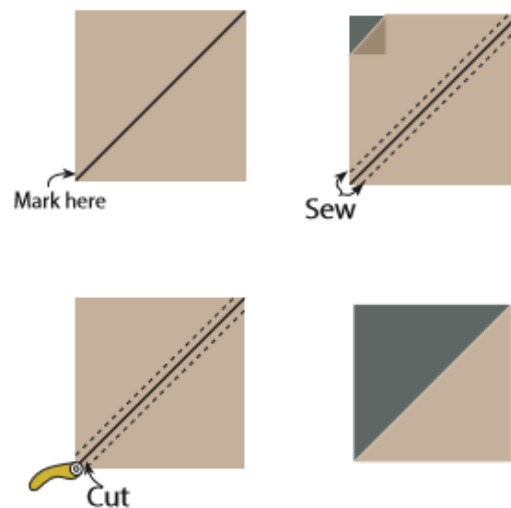


DIAGRAM 1

XXXXXXXXXXXXXXXXXXXXXXXXXXXX

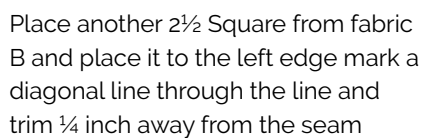
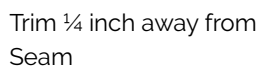
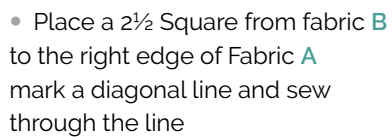


DIAGRAM 2

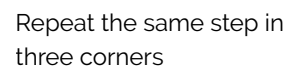
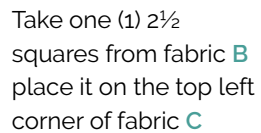


DIAGRAM 3

artgalleryfabrics.com



Sew rows together

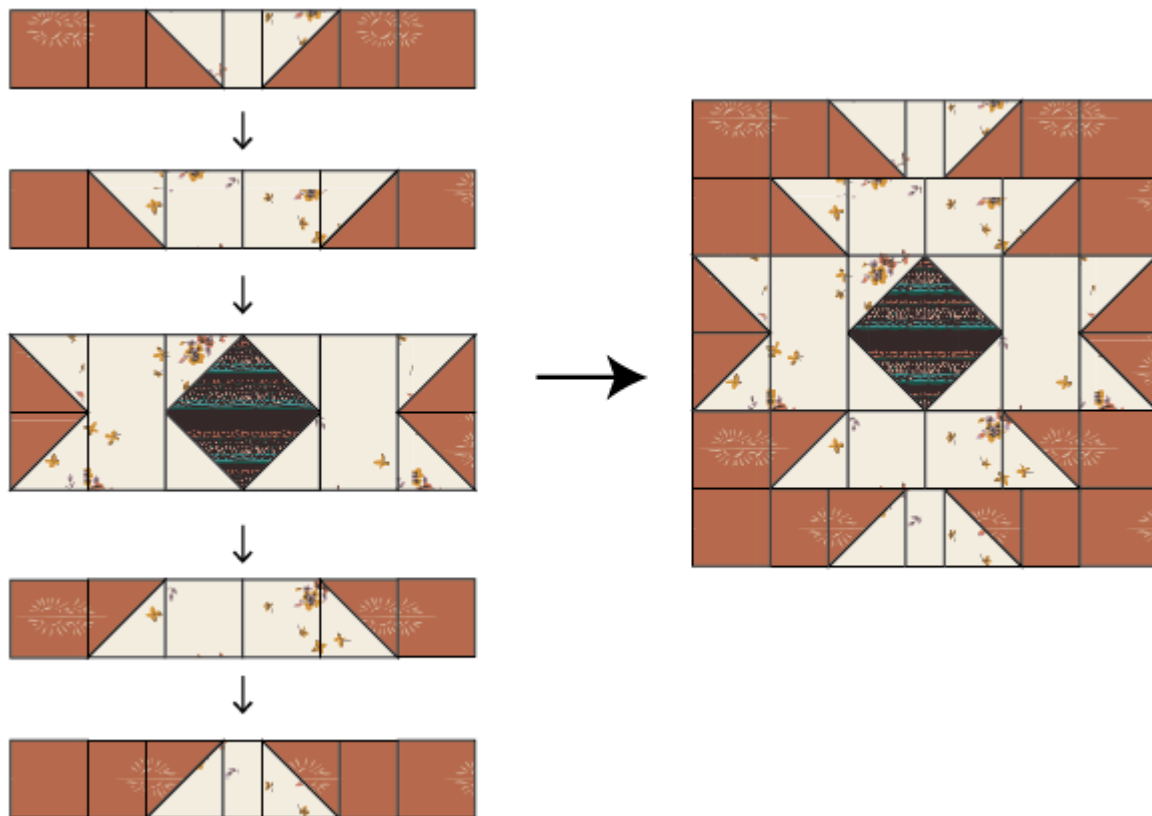


DIAGRAM 5

Take four (4) 1" squares from fabric **D** cut them diagonally, and with steam a seam place two triangles on each corner of the block (See Diagram below for reference)



DIAGRAM 6



artgalleryfabrics.com

NOTE: While all possible care has been taken to ensure the accuracy of this pattern, We are not responsible for printing errors or the way in which individual work varies. Please read instructions carefully before starting the construction of this quilt. If desired, wash and iron your fabrics before starting to cut.

© 2019 Courtesy of Art Gallery Quilts LLC. All Rights Reserved.