



x x x x x x x x x x x x x x x x x x x

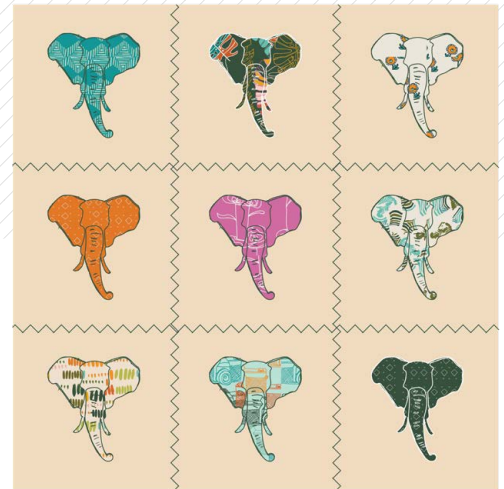
A DIVISION OF AGF



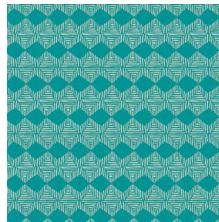
DESIGNED BY AGF STUDIO

Maara

FABRICS DESIGNED BY ALEXANDRA BORDALLO



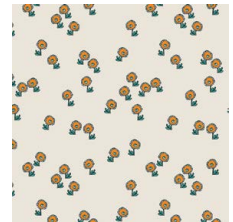
MAA-64900
MAASAI VILLAGE



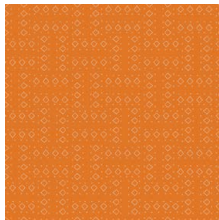
MAA-64901
KHASA MANTLE



MAA-64902
JUNGLE TOUR



MAA-64903
HAPPY LANDING



MAA-64904
TRAVELED ROADS SUN



MAA-64905
SEE THE WORLD



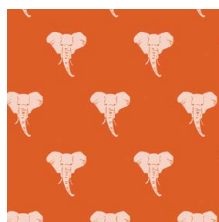
MAA-64906
FYNBOS VALLEY



MAA-64907
SECRET ZEBRA



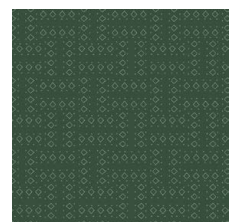
MAA-64908
NGONG HILLS



MAA-64909
WILD & MAJESTIC



MAA-64910
CAPTURED MEMORIES



MAA-64911
TRAVELED ROADS MOON



FEEL THE DIFFERENCE © 2019 Courtesy of Art Gallery Quilts LLC. All Rights Reserved.



FINISHED SIZE | 18" x 18"

FABRIC REQUIREMENTS

Fabric A	MAA-64901	F8
Fabric B	MAA-64902	F8
Fabric C	MAA-64901	F8
Fabric D	MAA-64902	F8
Fabric E	MAA-64901	F8
Fabric F	MAA-64902	F8
Fabric G	MAA-64901	F8
Fabric H	MAA-64902	F8
Fabric I	MAA-64901	¼ yd.
Fabric J	MAA-64902	⅛ yd.
Fabric K	MAA-64901	¼ yd.
Fabric L	MAA-64902	¾ yd.

CUTTING DIRECTIONS

¼" seam allowances are included.
WOF means width of fabric.

- One (1) template 1 from fabrics A, B, C, D, E, F, G, H and I.
- One (1) template 2 from fabrics A, B, C, D, E, F, G, H and I.
- One (1) template 3 from fabrics A, B, C, D, E, F, G, H and I.
- One (1) template 4 from fabrics A, B, C, D, E, F, G, H and I.
- Seven (7) template 1 from fabric K.
- Seven (7) template 2 from fabric K.
- Seven (7) template 3 from fabric K.
- Seven (7) template 4 from fabric K.
- Seven (7) 6½" x 6½" squares from fabric L.
- Two (2) 19" x 12" rectangles from fabric L.

CONSTRUCTION

Sew all rights sides together with ¼" seam allowance.

- Take seven (7) templates 1, 2, 3, and 4 from fabric K and layer them under one (1) template 1, 2, 3, and 4 from fabrics A, C, D, E, F, G, and H.
- Join them using steam a seam.

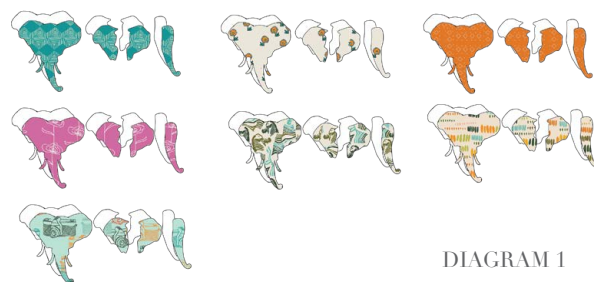


DIAGRAM 1

- Place all the templates on top of fabric J and stitch them in place.
- Cut at ⅛" from the edge of the templates to create a green stroke around each template.
- Overlap the templates following Diagram 2.

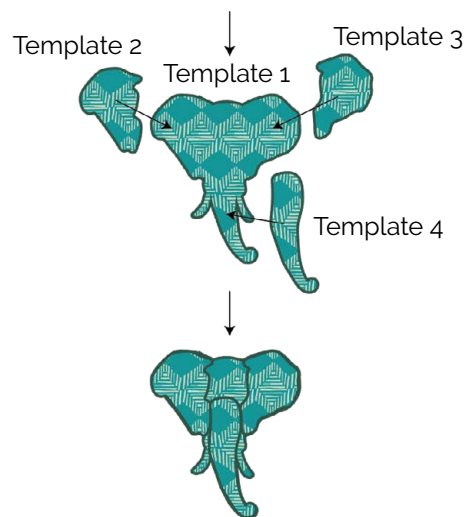


DIAGRAM 2

- Take one (1) templates 1, 2, 3, and 4 from fabrics **B** and **I**, and the leftover from fabric **K**.
- Place all the templates on top of fabric **K** and stitch them in place.
- Cut at $\frac{1}{8}$ " from the edge of the templates to create a white stroke around each template.
- Overlap the templates following Diagram 3.

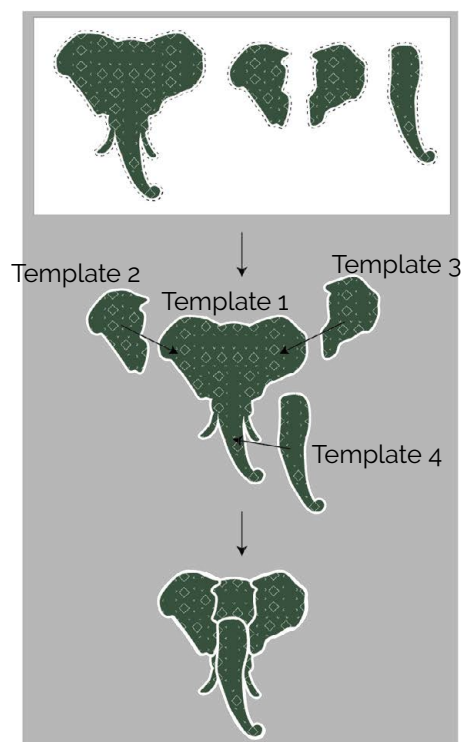


DIAGRAM 3

- Center each elephant in one (1) $6\frac{1}{2}$ " x $6\frac{1}{2}$ " square from fabric **L**.
- Join the squares following the Diagram 4.

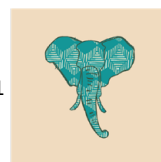
Row 1: **A - B - C**

Row 2: **D - E - F**

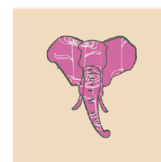
Row 3: **G - H - I**

- Place batting, and do a zig zag stitch along the seams.

Row 1



Row 2



Row 3



DIAGRAM 4



DIAGRAM 5

QUILT ASSEMBLY

Sew rights sides together.

- Place BACKING FABRIC on a large surface wrong side up. Stretch it with masking tape against that surface.
- Place BATTING on top of backing fabric.
- Place TOP on top of the batting with right side facing up. Smooth away wrinkles using your hands.
- Pin all layers together and baste with basting thread, using long stitches. You can also use safety pins to join the layers.
- Machine or hand quilt starting at the center and working towards the corners. Remember that quilting motifs are a matter of personal preference. Have fun choosing yours!
- After you finished, trim excess of any fabric or batting, squaring the quilt to proceed to bind it.



artgalleryfabrics.com

NOTE: While all possible care has been taken to ensure the accuracy of this pattern, We are not responsible for printing errors or the way in which individual work varies. Please read instructions carefully before starting the construction of this quilt. If desired, wash and iron your fabrics before starting to cut.

TEMPLATES

