

XXXXXX



# ANGLES

A DIVISION OF AGF

## FREE PATTERN

XXXXXXXXXXXXXXXXXXXXXXXXXXXX



# beon bag

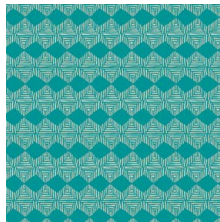
DESIGNED BY AGF STUDIO

*Maara*

FABRICS DESIGNED BY ALEXANDRA BORDALLO



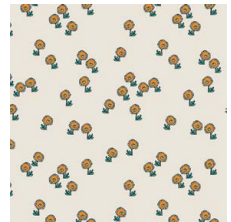
MAA-64900  
MAASAI VILLAGE



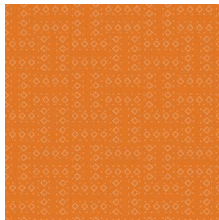
MAA-64901  
KHASHA MANTLE



MAA-64902  
JUNGLE TOUR



MAA-64903  
HAPPY LANDING



MAA-64904  
TRAVELED ROADS SUN



MAA-64905  
SEE THE WORLD



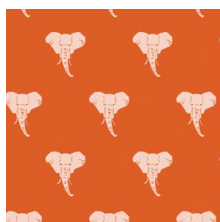
MAA-64906  
FYNBOS VALLEY



MAA-64907  
SECRET ZEBRA



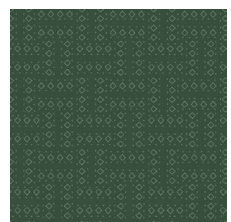
MAA-64908  
NGONG HILLS



MAA-64909  
WILD & MAJESTIC



MAA-64910  
CAPTURED MEMORIES



MAA-64911  
TRAVELED ROADS MOON



FEEL THE DIFFERENCE © 2019 Courtesy of Art Gallery Quilts LLC. All Rights Reserved.



FINISHED SIZE | 27' x 27' x 27"

## FABRIC REQUIREMENTS

Fabric A	MAA-64908	1 $\frac{7}{8}$ yd.
Fabric B	MAA-64904	$\frac{7}{8}$ yd.
Fabric C	MAA-64911	$\frac{7}{8}$ yd.
Fabric D	MAA-64901	$\frac{5}{8}$ yd.
Fabric E	MAA-64906	$\frac{1}{2}$ yd.
Fabric F	PE-414	$\frac{5}{8}$ yd.
Fabric G	PE-436	$\frac{1}{2}$ yd.

Four bags of bean bag chair refill  
(100 liter refill bags)

## CUTTING DIRECTIONS

$\frac{1}{4}$ " seam allowances are included.  
WOF means width of fabric.

- One (1) 27 $\frac{1}{2}$ " x 27 $\frac{1}{2}$ " square from fabric A.
- Twenty four (24) WOF x 1 $\frac{1}{2}$ " strips from fabric A.
- Twenty two (22) WOF x 1 $\frac{1}{2}$ " strips from fabric B.
- Eighteen (18) WOF x 1 $\frac{1}{2}$ " strips from fabric C.
- Fourteen (14) WOF x 1 $\frac{1}{2}$ " strips from fabric D.
- Ten (10) WOF x 1 $\frac{1}{2}$ " strips from fabric E.
- Twelve (12) WOF x 1 $\frac{1}{2}$ " strips from fabric F.
- Ten (10) WOF x 1 $\frac{1}{2}$ " strips from fabric G.

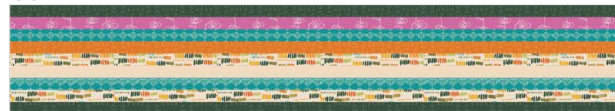
## CONSTRUCTION

Sew all rights sides together with  $\frac{1}{4}$ " seam allowance.

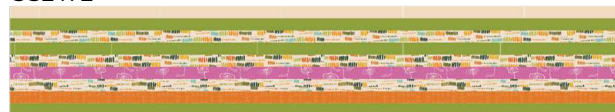
- Make the following strip sets twice.
- For fabric placement and attachment follow Diagram 1.

XXXXXXXXXXXXXXXXXXXXXXXXXXXXXXXXXXXX

SS1 x 2



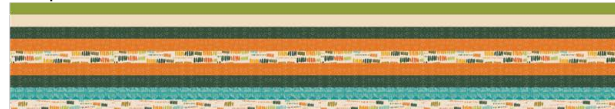
SS2 x 2



SS3 x 2



SS4 x 2



SS5 x 2



SS6 x 2



DIAGRAM 1

- Sub cut each strip into 9 $\frac{1}{2}$ " x 9 $\frac{1}{2}$ " squares. As a result you will get:

Block 1 x 8



Block 2 x 8



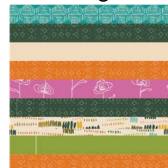
Block 3 x 8



Block 4 x 8



Block 5 x 8



Block 6 x 8



DIAGRAM 2



- Mismatch the resulting squares until you get five (5) of the following:

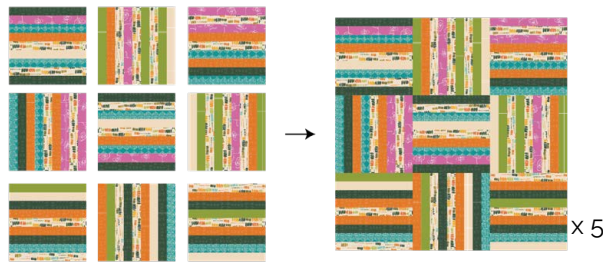


DIAGRAM 3

## QUILT, JOIN AND FILL

*Sew rights sides together.*

- Take the five (5) blocks and one (1)  $27\frac{1}{2}'' \times 27\frac{1}{2}''$  square from fabric **A**.

Quilt:

- Place each block and square on top of batting with right side facing up. Smooth away wrinkles using your hands.
- Pin both layers together and baste with basting thread, using long stitches. You can also use safety pins to join the layers.
- Machine or hand quilt starting at the center and working towards the corners. Remember that quilting motifs are a matter of personal preference. Have fun choosing yours!
- After you finished, trim excess of batting.

Join:

- Join the quilted squares making sure the seams of the blocks are going in different direction.
- For fabric placement and attachment follow Diagram 4.

Fill:

- After joining all the sides, leave a 5" hole to fill your bean bag with the bean bag refill.
- Hand stitch the 5" hole an enjoy!

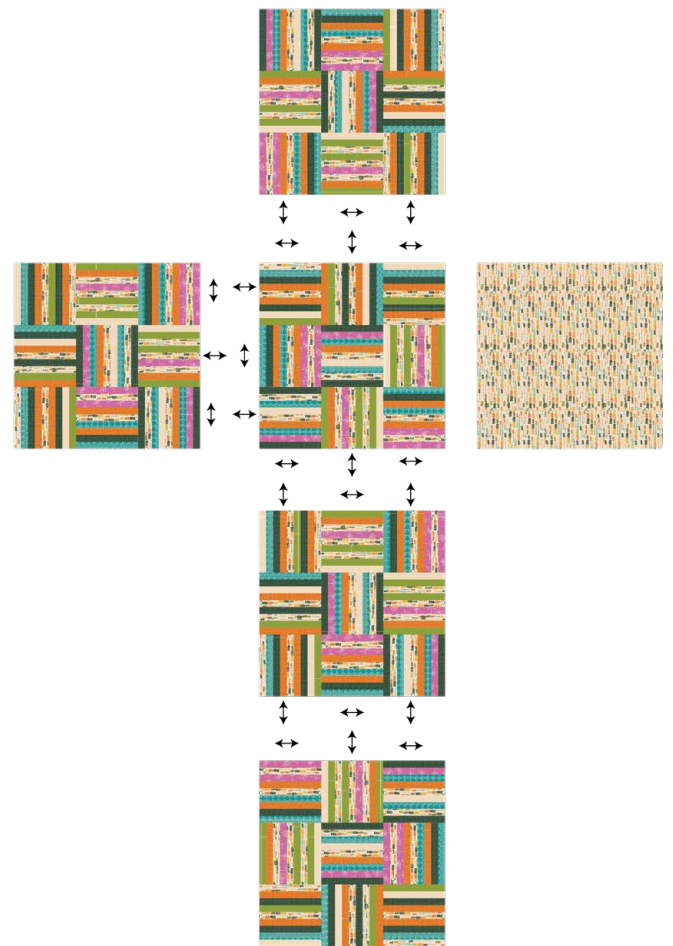


DIAGRAM 4



[artgalleryfabrics.com](http://artgalleryfabrics.com)

NOTE: While all possible care has been taken to ensure the accuracy of this pattern, We are not responsible for printing errors or the way in which individual work varies. Please read instructions carefully before starting the construction of this quilt. If desired, wash and iron your fabrics before starting to cut.