

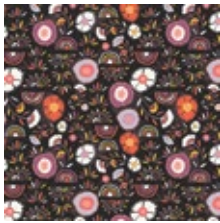




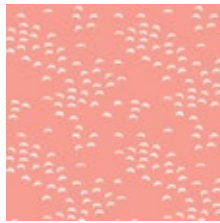
Pillows Designed by AGF



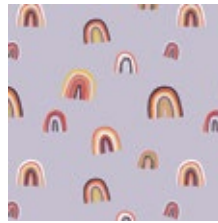
FABRICS DESIGNED BY JESSICA SWIFT



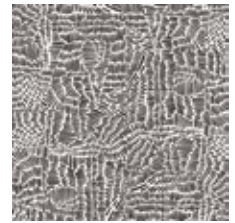
KUS-23700  
DIVINE PACHA



KUS-23701  
ETERNAL MAJIVU



KUS-23702  
FORTUNATE CHIRAPA



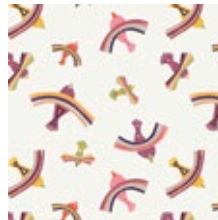
KUS-23703  
EVERLASTING IMPRINT



KUS-23704  
RAINBOW JAGUAR



KUS-23705  
JOYFUL UKUPHILA



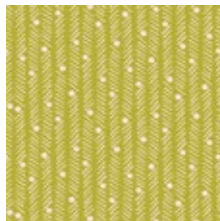
KUS-23706  
BRIGHT INDIZA



KUS-23707  
FLAME AMAZULU



KUS-23708  
SPIRIT HONORA



KUS-23709  
LIVELY KUMBUKUMBU



KUS-23710  
VITAL DHALASHADA



KUS-23711  
SOUL RITUEEL





This is how the left pillow will look



DIAGRAM 2



DIAGRAM 4

Repeat the same step for the other pillow, with the other  $11\frac{1}{2}'' \times 13\frac{1}{2}''$  Rectangles from fabric H but positioning the templates on the bottom right corner. Starting from the bottom with template 7L Z Z



- Template 1L
- Template 2L
- Template 3L
- Template 4L
- Template 5L
- Template 6L
- Template 7L



DIAGRAM 3

## CREATING THE BACK PILLOW

*Sew all rights sides together with  $\frac{1}{4}''$  seam allowance. Press open.*

- To make a envelope back for your pillow take both  $11\frac{1}{2}'' \times 10''$  rectangles and fold one  $11\frac{1}{2}''$  side on each rectangle in  $\frac{1}{2}''$  and press and then fold another  $\frac{1}{2}''$  and press.
- Top stitch as close to the edge as possible.
- Place rectangles right side together on top of each other to the front of your pillow and stitch all the way around your pillow at  $\frac{1}{4}''$  seam allowance.
- Clip corners at seam allowance and flip piece to the right side of the fabric.
- Fill pillow with a  $11'' \times 13''$  pillow form and enjoy!









Template 5

Template 6

Template 7



Template 5L

Template 6L

Template 7L



Template 1

Template 2

Template 3

Template 4

Template 1L

Template 2L

Template 3L

Template 4L



