

X  
X  
X  
X  
X  
X  
X  
X  
X  
X  
X  
X



A DIVISION OF AGF

x x x x x x x x x x x x x x x x x x x





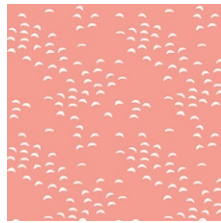
QUILT DESIGNED BY AGF STUDIO



FABRICS DESIGNED BY JESSICA SWIFT



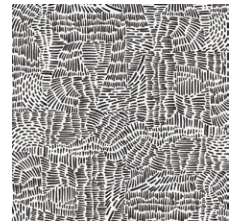
KUS-23700  
DIVINE PACHA



KUS-23701  
ETERNAL MAJIVU



KUS-23702  
FORTUNATE CHIRAPA



KUS-23703  
EVERLASTING IMPRINT



KUS-23704  
RAINBOW JAGUAR



KUS-23705  
JOYFUL UKUPHILA



KUS-23706  
BRIGHT INDIZA



KUS-23707  
FLAME AMAZULU



KUS-23708  
SPIRIT HONORA



KUS-23709  
LIVELY KUMBUKUMBU



KUS-23710  
VITAL DHALASHADA



KUS-23711  
SOUL RITUEEL



FEEL THE DIFFERENCE © 2019 Courtesy of Art Gallery Quilts LLC. All Rights Reserved.



FINISHED SIZE | 50" x 50"

## FABRIC REQUIREMENTS

Fabric A	KUS-23701	1/3 yd.
Fabric B	KUS-23702	3/4 yd.
Fabric C	KUS-23704	1/4 yd.
Fabric D	KUS-23710	1/3 yd.
Fabric E	KUS-23709	1/2 yd.
Fabric F	KUS-23711	1/4 yd.
Fabric G	PE-433	3/4 yd.
Fabric H	PE-493	1/3 yd.
Fabric I	PE-484	5/8 yd.

### BACKING FABRIC

KUS-23700 3 1/2 yds. (suggested)

### BINDING FABRIC

KUS-23710 (Fabric D) (included)

## CUTTING DIRECTIONS

1/4" seam allowances are included.  
WOF means width of fabric.

- Thirty-six (36) 2 7/8" squares from fabric A.
- Seventy-two (72) 2 1/2" squares from fabric B.
- Thirty-six (36) 2 7/8" squares from fabric B.
- Nine (9) Fussy cut 4 1/2" squares from fabric C.
- Thirty-six (36) 2 7/8" squares from fabric D.
- Seventy-two (72) 2 1/2" squares from fabric E.
- Thirty-six (36) 2 1/2" squares from fabric F.
- One-Hundred-Eight (108) 2 7/8" squares from fabric G.
- Thirty-six (36) 2 7/8" squares from fabric H.
- Seventy-two (72) 2 7/8" squares from fabric I.

## CONSTRUCTION

Sew all rights sides together with 1/4" seam allowance.

- Start constructing the HST needed for this quilt.
- Take all the 2 7/8" squares from fabrics A B D E G H and I.
- Make seventy two HST triangles from each of the following combinations A I G I D G B H and B G.



DIAGRAM 1

- Now construct set 1.
- Begin by taking two D G HST, two G I HST and two A I HST.

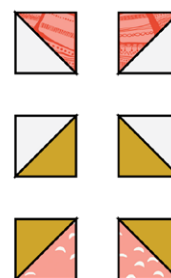


DIAGRAM 2

- Sew them in pairs to create three flying geese.

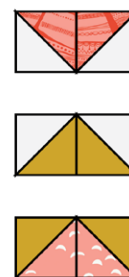


DIAGRAM 3

- Attach them together.
- Repeat to complete a total of thirty six.
- You will be using four set 1 in each block later on, for now, set them aside.



DIAGRAM 4

- 

The image displays three rows of geometric patterns, each consisting of a horizontal sequence of 10 squares. Each square is divided into four triangles by its diagonals. The patterns are composed of various colors and designs:

- Top Row:** Features a repeating sequence of colors and patterns: purple with a rainbow, yellow with a rainbow, white, and purple with a rainbow. The central squares are yellow with a rainbow.
- Middle Row:** Features a repeating sequence of colors and patterns: red with a rainbow, yellow with a rainbow, white, and purple with a rainbow. The central squares are yellow with a rainbow.
- Bottom Row:** Features a repeating sequence of colors and patterns: purple with a rainbow, yellow with a rainbow, white, and purple with a rainbow. The central squares are yellow with a rainbow.

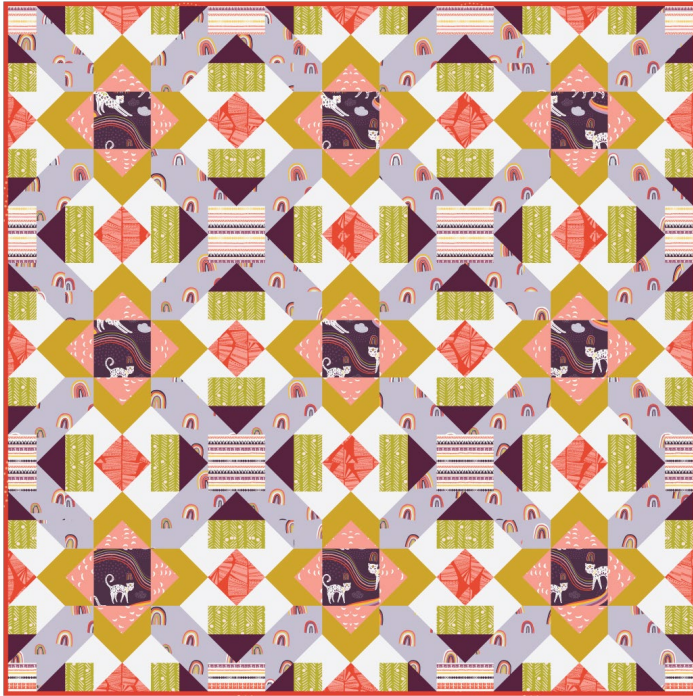
DIAGRAM 10



## ASSEMBLING THE TOP

*Sew all right sides together with a 1/4" seam allowance.*

- Create three rows, each row with three Blocks in it.
- Refer to diagram below or cover picture.



## QUILT ASSEMBLY

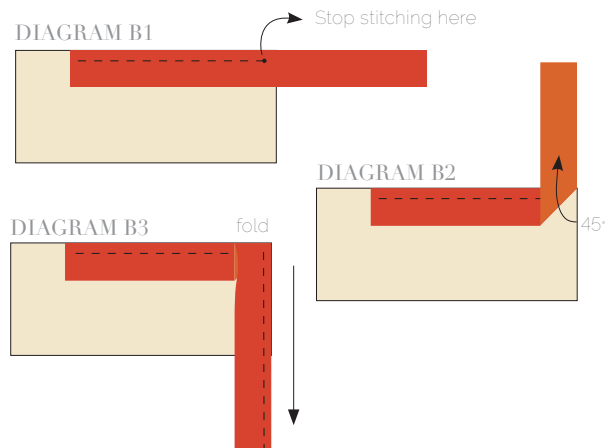
*Sew rights sides together.*

- Place BACKING FABRIC on a large surface wrong side up. Stretch it with masking tape against that surface.
- Place BATTING on top of backing fabric.
- Place TOP on top of the batting with right side facing up. Smooth away wrinkles using your hands.
- Pin all layers together and baste with basting thread, using long stitches. You can also use safety pins to join the layers.
- Machine or hand quilt starting at the center and working towards the corners. Remember that quilting motifs are a matter of personal preference. Have fun choosing yours!
- After you finished, trim excess of any fabric or batting, squaring the quilt to proceed to bind it.

## BINDING

*Sew rights sides together.*

- Cut enough strips 1 1/2" wide by the width of the fabric D to make a final strip 210" long. Start sewing the binding strip in the middle of one of the sides of the quilt, placing the strip right side down and leaving an approximated 5" tail. Sew with 1/4" seam allowance (using straight stitch), aligning the strip's raw edge with the quilt top's raw edge.
- Stop stitching 1/4" before the edge of the quilt (DIAGRAM B 1). Clip the threads. Remove the quilt from under the machine presser foot. Fold the strip in a motion of 45° and upward, pressing with your fingers (DIAGRAM B2). Hold this fold with your finger, bring the strip down in line with the next edge, making a horizontal fold that aligns with the top edge of the quilt (DIAGRAM B3). Start sewing at 1/4" of the border, stitching all the layers. Do the same in the four corners of the quilt.
- Stop stitching before you reach the last 5 or 6 inches. Cut the threads and remove the quilt from under the machine presser foot. Lay the loose ends of the binding flat along the quilt edge, folding the ends back on themselves where they meet. Press them together to form a crease. Using this crease as the stitching line, sew the two open ends of the binding with right sides together (you can help yourself marking with a pencil if the crease is difficult to see).
- Trim seam to 1/4" and press open. Complete the sewing. Turn binding to back of the quilt, turn raw edge inside and stitch by hand using blind stitch.





[artgalleryfabrics.com](http://artgalleryfabrics.com)

NOTE: While all possible care has been taken to ensure the accuracy of this pattern, We are not responsible for printing errors or the way in which individual work varies. Please read instructions carefully before starting the construction of this quilt. If desired, wash and iron your fabrics before starting to cut.

© 2019 Courtesy of Art Gallery Quilts LLC. All Rights Reserved.