

featuring KUSHUKURU COLLECTION BY JESSICA SWIFT

X
X
X
X
X
X
X
X
X
X
X
X
X
X
X
X
X
X
X
X
X
X

Iris Blocks



ANGLES

A DIVISION OF AGF

FREE PATTERN

XXXXXXXXXXXXXXXXXXXXXXXXXXXXXXXXXXXX

XXXXXXXXXXXXXXXXXXXXXXXXXXXXXXXXXXXX

Iris Blocks

DESIGNED BY AGFstudio



FABRICS DESIGNED BY JESSICA SWIFT



KUS-23711
SOUL RITUEEL



KUS-23704
RAINBOW JAGUAR



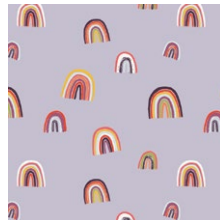
KUS-23709
LIVELY KUMBUKUMBU



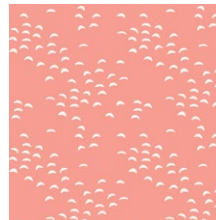
KUS-23706
BRIGHT INDIZA



KUS-23703
EVERLASTING IMPRINT



KUS-23702
FORTUNATE CHIRAPA



KUS-23701
ETERNAL MAJIVU

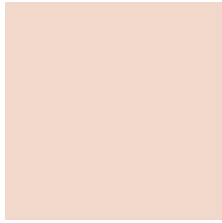


KUS-23700
DIVINE PACHA





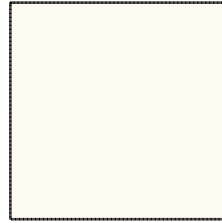
PE-489
MIAMI SUNSET



PE-471
SWEET MACADAMIA



PE-476
PURPLE WINE



PE-408
WHITE LINEN



PE-461
TIGERLILY



PE-484
LEMON TART



PE-400
CABERNET

Iris Blocks

FINISHED SIZE | 10" x 10"

FABRIC REQUIREMENTS

Block 1

Fabric A	KUS-23711	F8
Fabric B	PE-489	F8
Fabric C	PE-471	F8
Fabric D	PE-476	F8
Fabric E	KUS-23704	F8

Block 2

Fabric A	KUS-23709	F8
Fabric B	PE-476	F8
Fabric C	PE-408	F8
Fabric D	PE-461	F8
Fabric E	KUS-23706	F8

Block 3

Fabric A	KUS-23703	F8
Fabric B	PE-484	F8
Fabric C	PE-471	F8
Fabric D	PE-400	F8
Fabric E	KUS-23702	F8

Block 4

Fabric A	KUS-23701	F8
Fabric B	PE-400	F8
Fabric C	PE-461	F8
Fabric D	PE-408	F8
Fabric E	KUS-23700	F8

CUTTING DIRECTIONS

*¼" seam allowances are included.
WOF means width of fabric.*

- Four (4) 2½" x 1½" rectangles from fabric **A**.
- Four (4) 3½" x 1½" rectangles from fabric **A**.
- Four (4) 4½" x 1½" rectangles from fabric **A**.
- Four (4) 3½" x 1½" rectangles from fabric **B**.
- Four (4) 2½" x 1½" rectangles from fabric **B**.
- Four (4) 3" x 1½" rectangles from fabric **C**.
- Four (4) 2" x 1½" rectangles from fabric **C**.
- Four (4) 2½" x 1½" rectangles from fabric **D**.
- Four (4) 1½" squares from fabric **D**.
- One (1) 4½" square from fabric **E**.

CONSTRUCTION

Sew all rights sides together with ¼" seam allowance.

- Take two 1½" squares from fabric **D** and join one on each side of one 2½" x 1½" rectangle from fabric **A**.
- Create another strip by taking two more 1½" square from fabric **D** and one 2½" x 1½" rectangle from fabric **A**.

Strip Set 1



DIAGRAM 1

- Take two 2½" x 1½" rectangles from fabric **D** and join one on each side of one 2½" x 1½" rectangle from fabric **A**.
- Create another strip by taking two 2½" x 1½" rectangles from fabric **D** and one 2½" x 1½" rectangle from fabric **A**.

Strip Set 2



DIAGRAM 2

BLOCK ASSEMBLY

- Take two 2" x 1½" rectangles from fabric **C** and join one on each side of one 3½" x 1½" rectangle from fabric **A**.
- Create another strip by taking two 2" x 1½" rectangles from fabric **C** and one 3½" x 1½" rectangle from fabric **A**.



DIAGRAM 3

- Take two 3" x 1½" rectangles from fabric **C** and join one on each side of one 3½" x 1½" rectangle from fabric **A**.
- Create another strip by taking two 2" x 1½" rectangles from fabric **C** and one 3½" x 1½" rectangle from fabric **A**.



DIAGRAM 4

- Take two 2½" x 1½" rectangles from fabric **B** and join one on each side of one 4½" x 1½" rectangle from fabric **A**.
- Create another strip by taking two 2½" x 1½" rectangles from fabric **B** and one 4½" x 1½" rectangle from fabric **A**.



DIAGRAM 5

- Take two 3½" x 1½" rectangles from fabric **B** and join one on each side of one 4½" x 1½" rectangle from fabric **A**.
- Create another strip by taking two 3½" x 1½" rectangles from fabric **B** and one 4½" x 1½" rectangle from fabric **A**.



DIAGRAM 6

(SS means Strip Set)

- Take two SS1 and join each strip on each side of fabric **E** 4½" square.



DIAGRAM 7

- Now take two SS2 and join one on the top and one on the bottom.

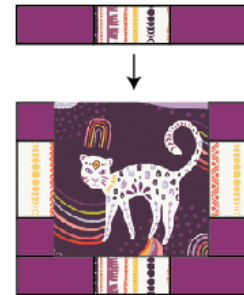


DIAGRAM 8

- Join two SS3 on each side of the unit, following the diagram below.

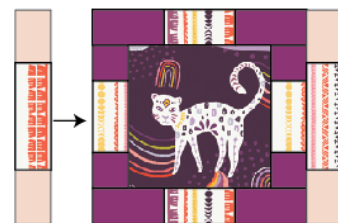


DIAGRAM 9

- Join two SS4, one on the top and one on the bottom of the unit, following the diagram below.

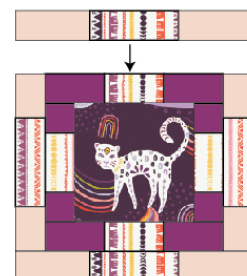


DIAGRAM 10



artgalleryfabrics.com

NOTE: While all possible care has been taken to ensure the accuracy of this pattern, We are not responsible for printing errors or the way in which individual work varies.
Please read instructions carefully before starting the construction of this quilt. If desired, wash and iron your fabrics before starting to cut.

© 2019 Courtesy of Art Gallery Quilts LLC. All Rights Reserved.