



A vibrant, handcrafted quilt square is centered on a solid red background. The quilt features a complex geometric design with a central diamond motif. The colors are bright and varied, including shades of blue, green, yellow, and red. The patterns include various animals like tigers, leopards, and sloths, as well as abstract geometric shapes and floral designs. The quilt is surrounded by several green paper leaves, adding a natural, organic feel to the composition.





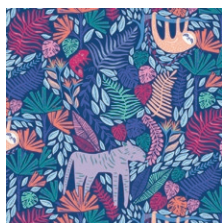
Quilt BLOCK collection



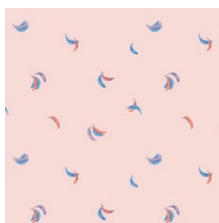
For More Block Tutorials :
<http://bit.ly/AGFquiltblockcollectionplaylist>

FABRICS DESIGNED BY AGF STUDIO

SAVANNAH



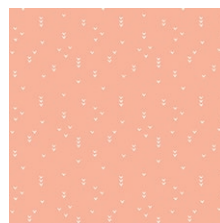
SLV-14510
JUNGLEN JOLLY



SLV-14511
BE BANANAS B1



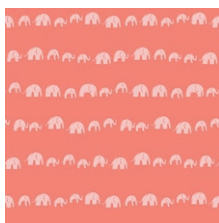
SLV-14512
FIERCE FELINES FRESH



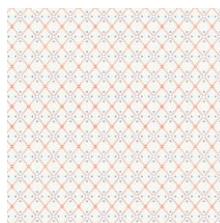
SLV-14513
PICK A PEAK PURE



SLV-14514
LUSH LIONS LILAC



SLV-14515
ELEPHANTS' ECHO EARTHY



SLV-14516
WISPY WEB WIND



SLV-14517
SWAYING SLOTHS SKY

SIERRA



SLV-24510
JUNGLEN JOYOUS



SLV-24511
BE BANANAS B2



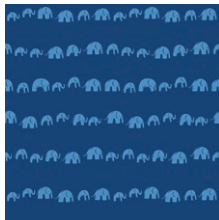
SLV-24512
FIERCE FELINES FUCSIA



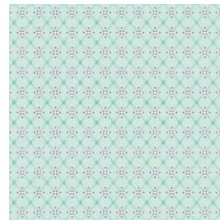
SLV-24513
PICK A PEAK PLANTA



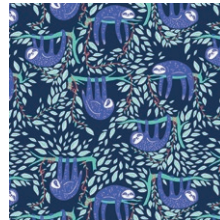
SLV-24514
LUSH LIONS LOVE



SLV-24515
ELEPHANTS' ECHO ELECTRIC



SLV-24516
WISPY WEB WAVE



SLV-24517
SWAYING SLOTHS SERENE



FINISHED SIZE | 12" x 12"

FABRIC REQUIREMENTS

Fabric A	SLV-24517
Fabric B	SLV-14513
Fabric C	SLV-14516
Fabric D	SLV-14515
Fabric E	SLV-14512
Fabric F	SLV-24513
Fabric G	SLV-24515

CUTTING INSTRUCTIONS

1/4" seam allowances are included.

- One (1) 4 1/2" square from Fabric **A**
- Eight (8) 2 1/2" squares from Fabric **B** and **G**
- Eight (8) 2 1/2" x 4 1/2" strips from Fabric **C**
- Four (4) 2 1/2" x 4 1/2" from Fabric **E**
- Four (4) 2 1/2" squares from Fabric **D**
- Four (4) 2 1/2" squares from Fabric **E** and **F**

CONSTRUCTION

Sew all rights sides together with 1/4" seam allowance.

- To create the corner units, you will need all your 2 1/2" squares from Fabric **D**.
- Since this fabric is direction we have to make sure our fabric is facing vertically.
- Place all four squares in front of you following Diagram 1 and draw diagonal lines on the wrong side of the fabric from corner to corner on each square like this.

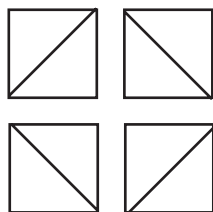


DIAGRAM 1

- Take your 2 1/2" x 4 1/2" strips from Fabric **E** and place your 2 1/2" squares on each end of your strips.
- When you sew on the line you drew your elephants all should be right side up!
- Sew on the line you drew and trim your seam allowance to 1/4".

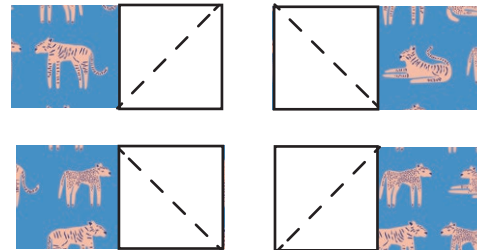


DIAGRAM 2.1

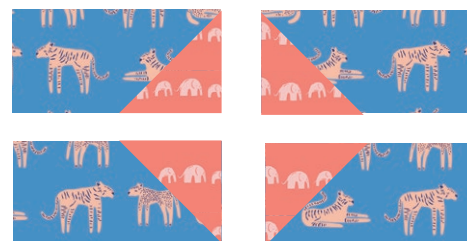


DIAGRAM 2.2

- Join all your 2 1/2" squares from Fabric **E** to your 2 1/2" squares from Fabric **F**.



DIAGRAM 3

- Sew these units to your corner square strips to complete your corner block units.

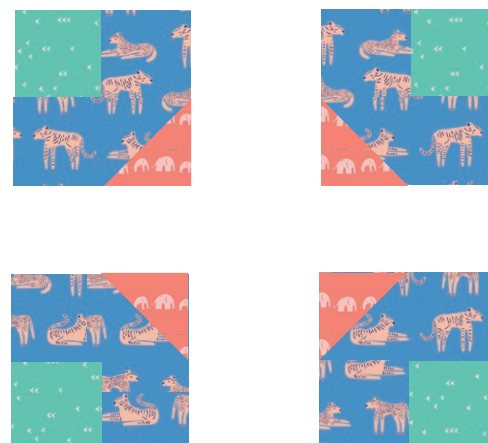


DIAGRAM 4

- To make your inner arrow units. You will need your 2 1/2" x 4 1/2" strips from Fabric C. Place a 2 1/2" square from Fabric B to each end of your strips and draw a diagonal line from corner to corner on the wrong side of the fabric with your diagonal lines facing in.
- Pin your squares into place and sew on the line you drew.

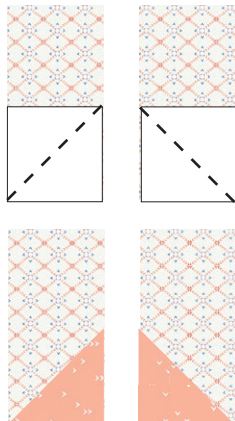


DIAGRAM 5

- Trim your seam allowance to 1/4" and repeat this same process with your 2 1/2" squares from Fabric G, taking into consideration the direction of the fabric.
- Sew on the line you drew and trim your seam allowance to 1/4"

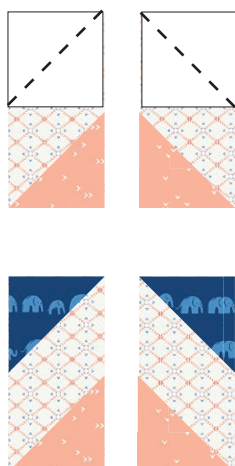


DIAGRAM 6

- Press your seams in alternating directions and sew your corner square triangle strips together to create four blocks.

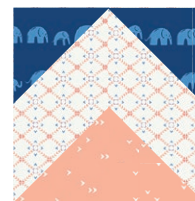


DIAGRAM 7

- Now all the units in your block are complete! Place out all your units following the block design and sew your units into rows.
- Sew your rows together matching up seams and your Prism Puzzle Block is complete.

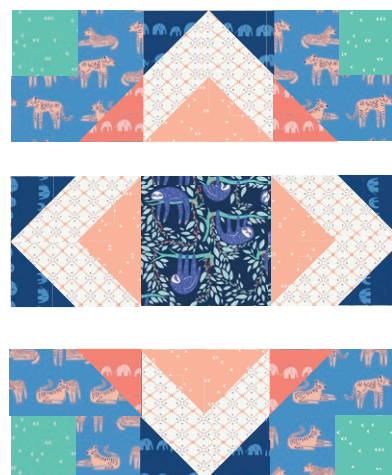


DIAGRAM 8



artgalleryfabrics.com

NOTE: While all possible care has been taken to ensure the accuracy of this pattern, We are not responsible for printing errors or the way in which individual work varies. Please read instructions carefully before starting the construction of this quilt. If desired, wash and iron your fabrics before starting to cut.