

Leo Pillow



Leo Pillow

PILLOW DESIGNED BY AGF STUDIO

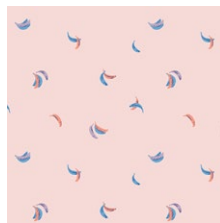
Selva

FABRICS DESIGNED BY AGF STUDIO

SAVANNAH



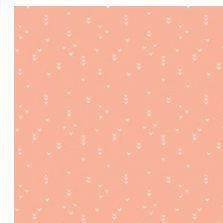
SLV-14510
JUNGLEN JOLLY



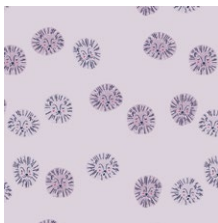
SLV-14511
BE BANANAS B1



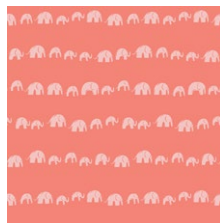
SLV-14512
FIERCE FELINES FRESH



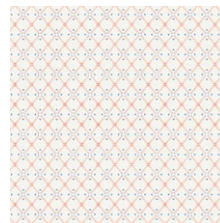
SLV-14513
PICK A PEAK PURE



SLV-14514
LUSH LIONS LILAC



SLV-14515
ELEPHANTS' ECHO EARTHY



SLV-14516
WISPY WEB WIND

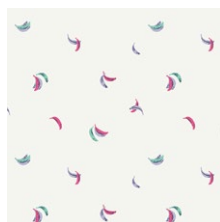


SLV-14517
SWAYING SLOTHS SKY

SIERRA



SLV-24510
JUNGLEN JOYOUS



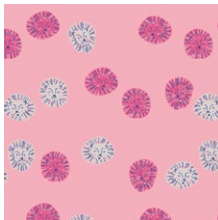
SLV-24511
BE BANANAS B2



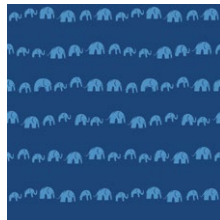
SLV-24512
FIERCE FELINES FUCSIA



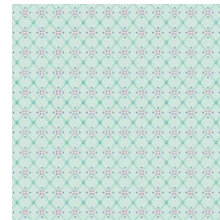
SLV-24513
PICK A PEAK PLANTA



SLV-24514
LUSH LIONS LOVE



SLV-24515
ELEPHANTS' ECHO ELECTRIC



SLV-24516
WISPY WEB WAVE



SLV-24517
SWAYING SLOTHS SERENE



FEEL THE DIFFERENCE © 2019 Courtesy of Art Gallery Quilts LLC. All Rights Reserved.



FINISHED SIZE | 22" X 24"

FABRIC REQUIREMENTS

Fabric A	SLV-24512	1 ½ yd.
Fabric B	SLV-24511	½ yd.
Fabric C	SLV-14516	⅓ yd.
Fabric D	SLV-14517	⅓ yd.
Fabric E	PE-478	⅓ yd.
Fabric F	PE-467	⅓ yd.

CUTTING INSTRUCTIONS

*¼" seam allowances are included.
WOF means width of fabric.*

Fabric A:

- Cut two (2) Template 1.

Fabric B:

- Cut two (2) Template 2.

Fabric C:

- Cut one (1) Template 3.

Fabric D:

- Cut two (2) Template 5L

- Cut one (1) Template 4R

Fabric E:

- Cut one (1) Template 5 L

- Cut one (1) Template 4R.

Fabric F:

- Cut one (1) Template T7, T7.1, T7.2, T7.3, T7.4, T7.5, T7.6, T7.7

CONSTRUCTION

Sew all rights sides together with ¼" seam allowance.

Let start by making the lion's mane

- Take the two pieces from Fabric A (Template 1) and place the two fabrics facing right sides together .
- Sew all around the outside of the templates. Turn it inside out. Set Aside. See diagram below for reference,

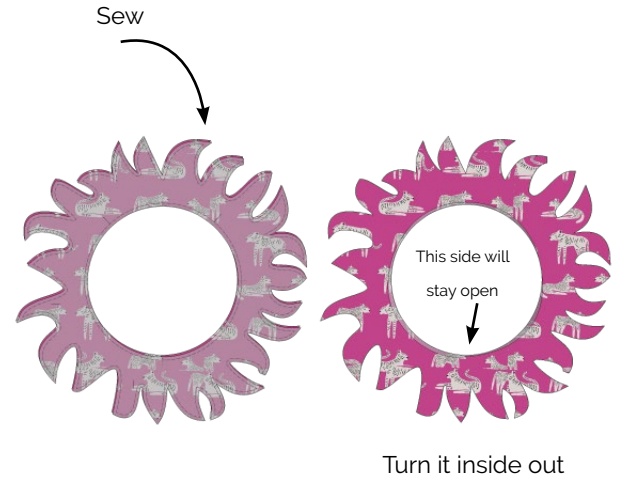


DIAGRAM 1

- For the face take fabric C (Template 3 and place it at the bottom of fabric B (Template 2) and sew it with a zig-zag stitch. See Diagram 2
- Take Template T7, T7.1, T7.2, T7.3, T7.4, T7.5, T7.6, T7.7 which are the face details and place them according to diagram 3.

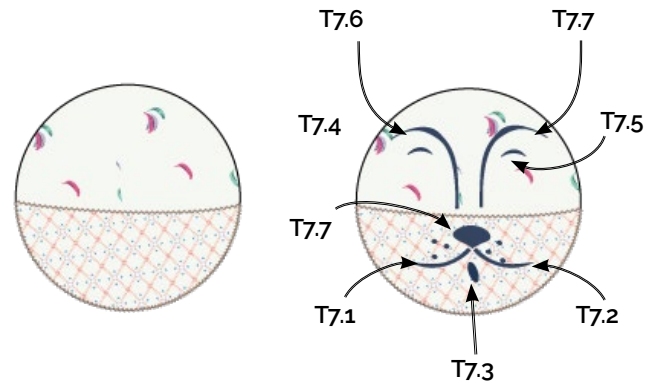


DIAGRAM 2

To make the ears

- Take one template 5L and place it on top of template 4L iron it with Steam A Seam
- Now take template a 4R and sew it with 5L facing right sides by the curved side leaving the straight side open.
- Turn it inside out and sew it to the Left top side of the face. Follow Notches on Template.
- Repeat the same step for the Right Ear.
- (See Diagram 3 for reference in template position)

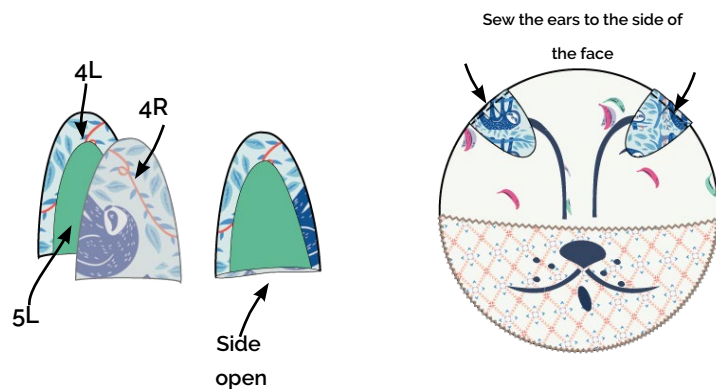


DIAGRAM 3

- Place the mane in between the Lion's face and the other piece from fabric B (Template 2) facing right sides together and sew.
- Leave approximately. 2" to 3" opening to turn it inside out after finish sewing.
- (See Diagram below for reference)

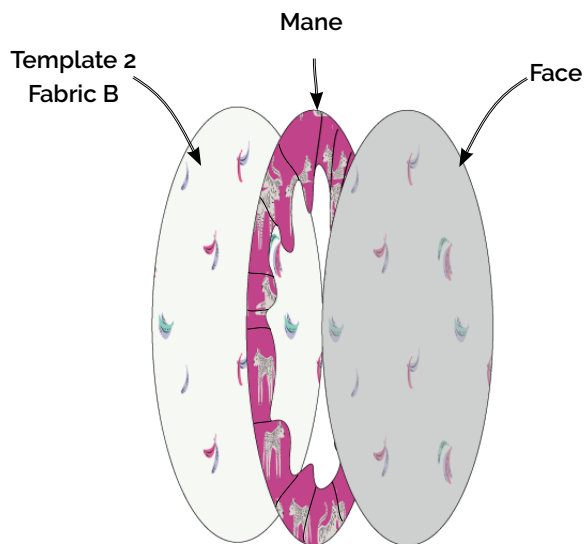


DIAGRAM 4

- Turn it inside out, stuff it with pillow filler and close the 2" to 3" inch opening by hand



DIAGRAM 5

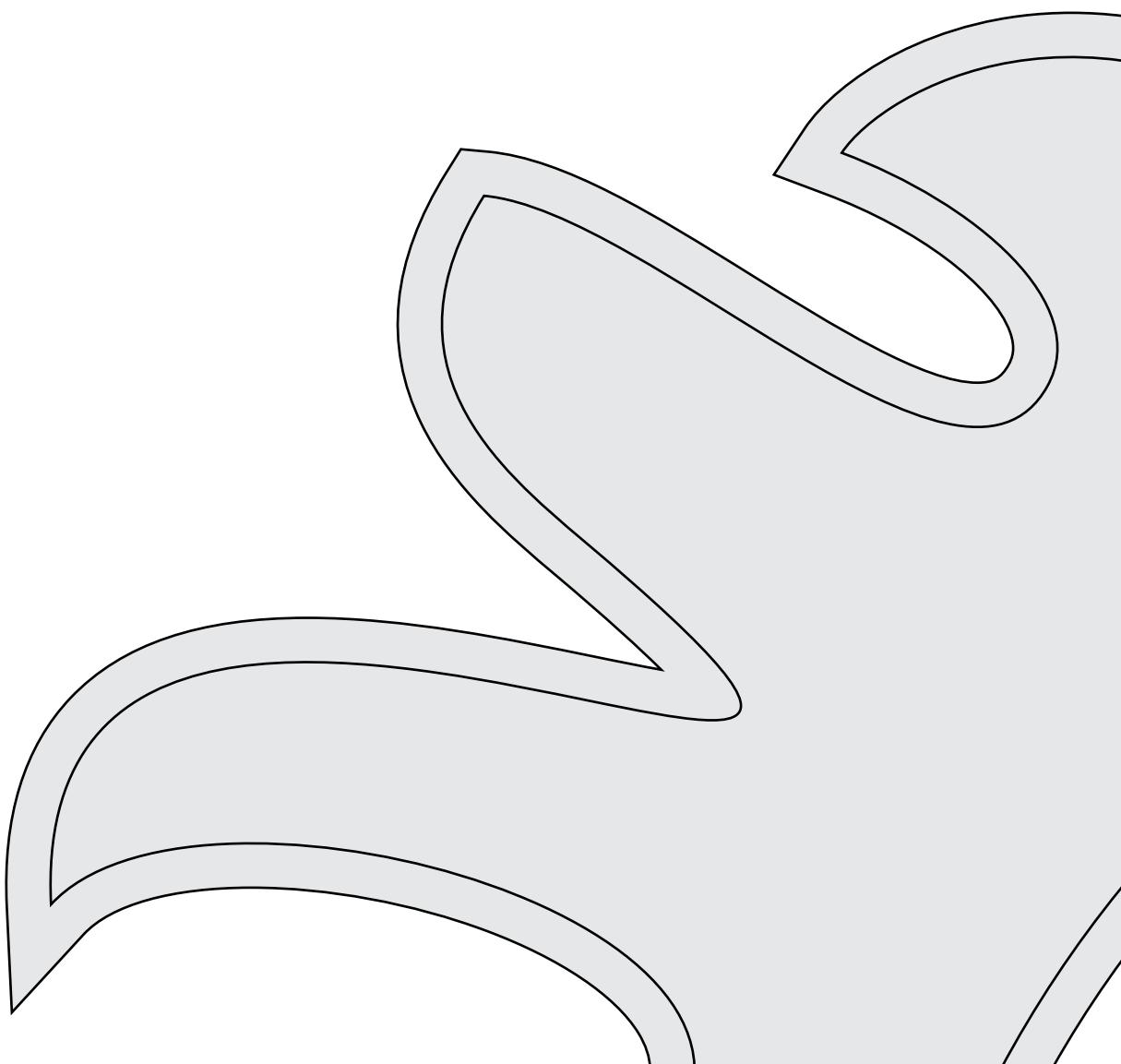


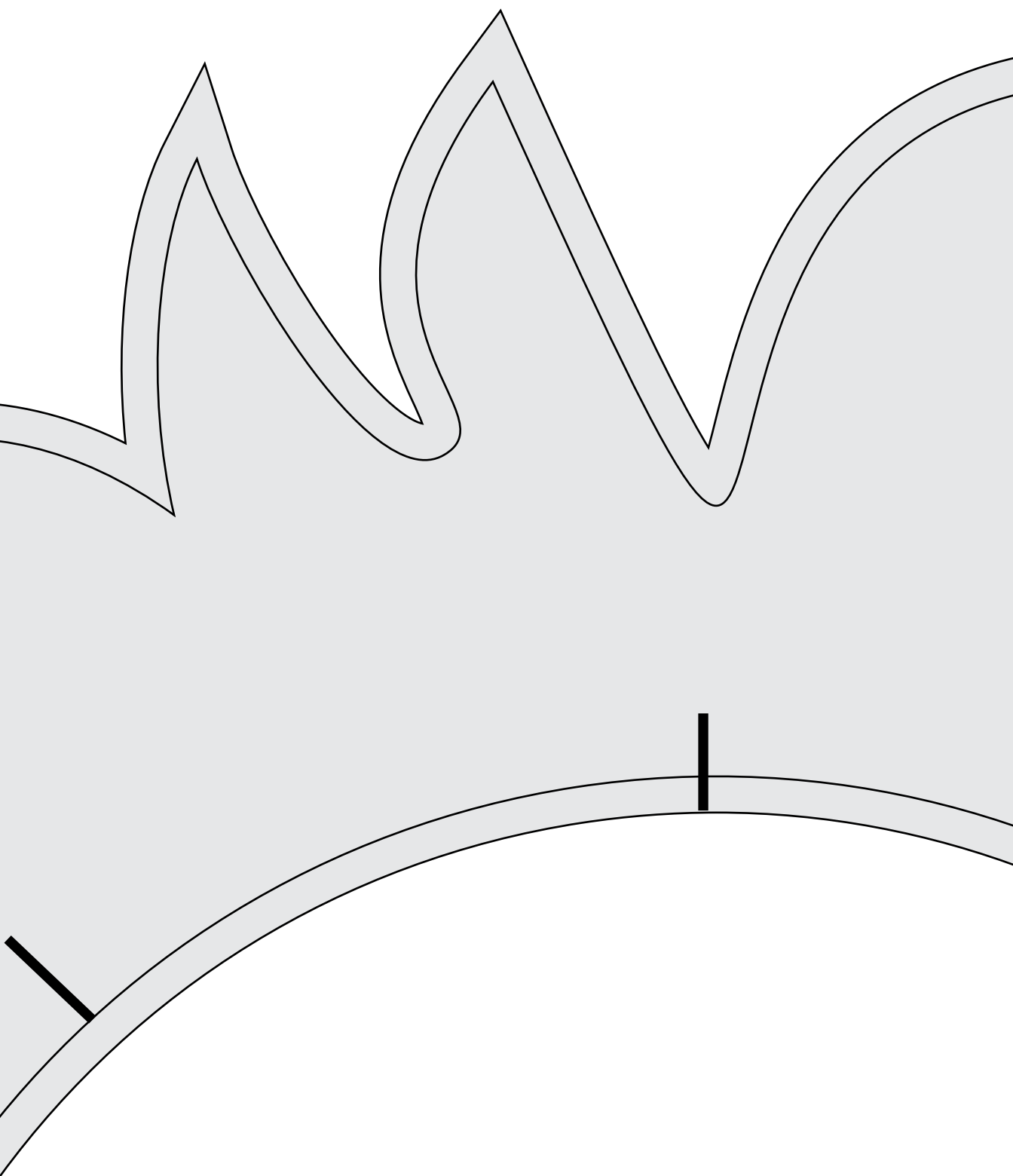
artgalleryfabrics.com

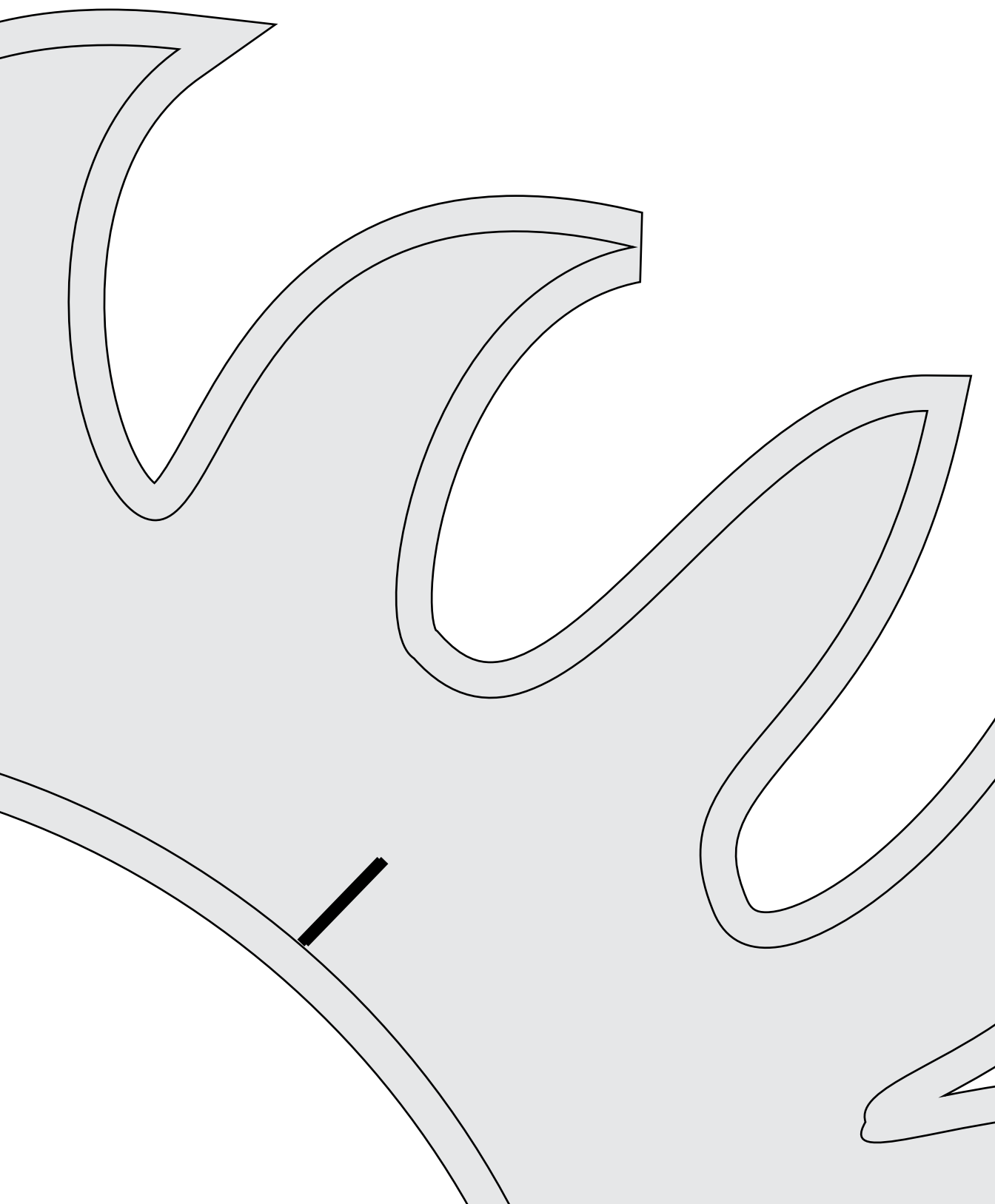
NOTE: While all possible care has been taken to ensure the accuracy of this pattern, We are not responsible for printing errors or the way in which individual work varies.

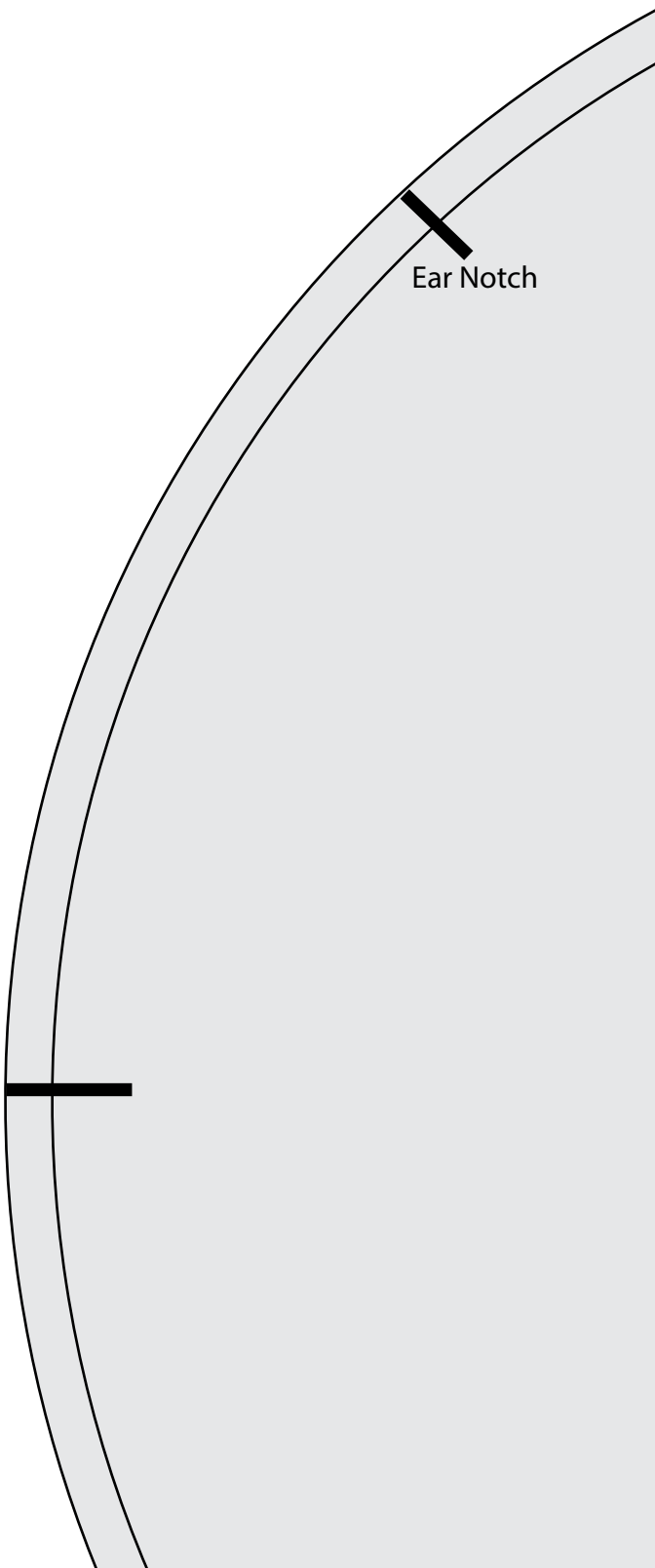
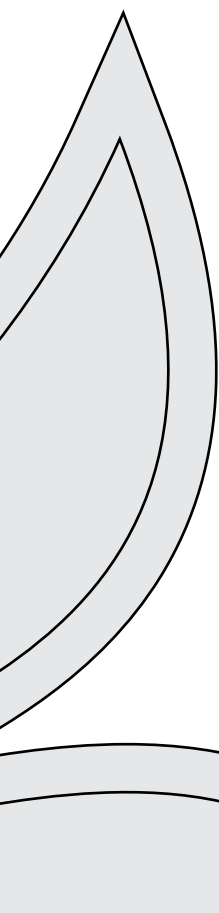
Please read instructions carefully before starting the construction of this quilt. If desired, wash and iron your fabrics before starting to cut.

© 2019 Courtesy of Art Gallery Quilts LLC. All Rights Reserved.

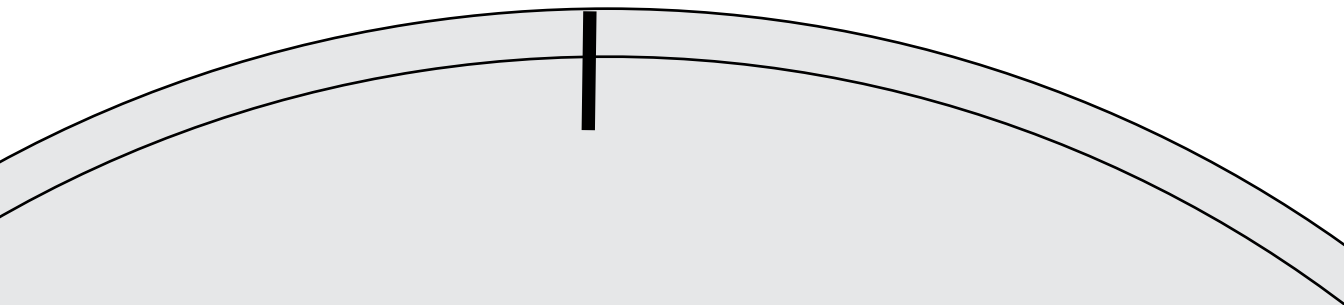








Ear Notch

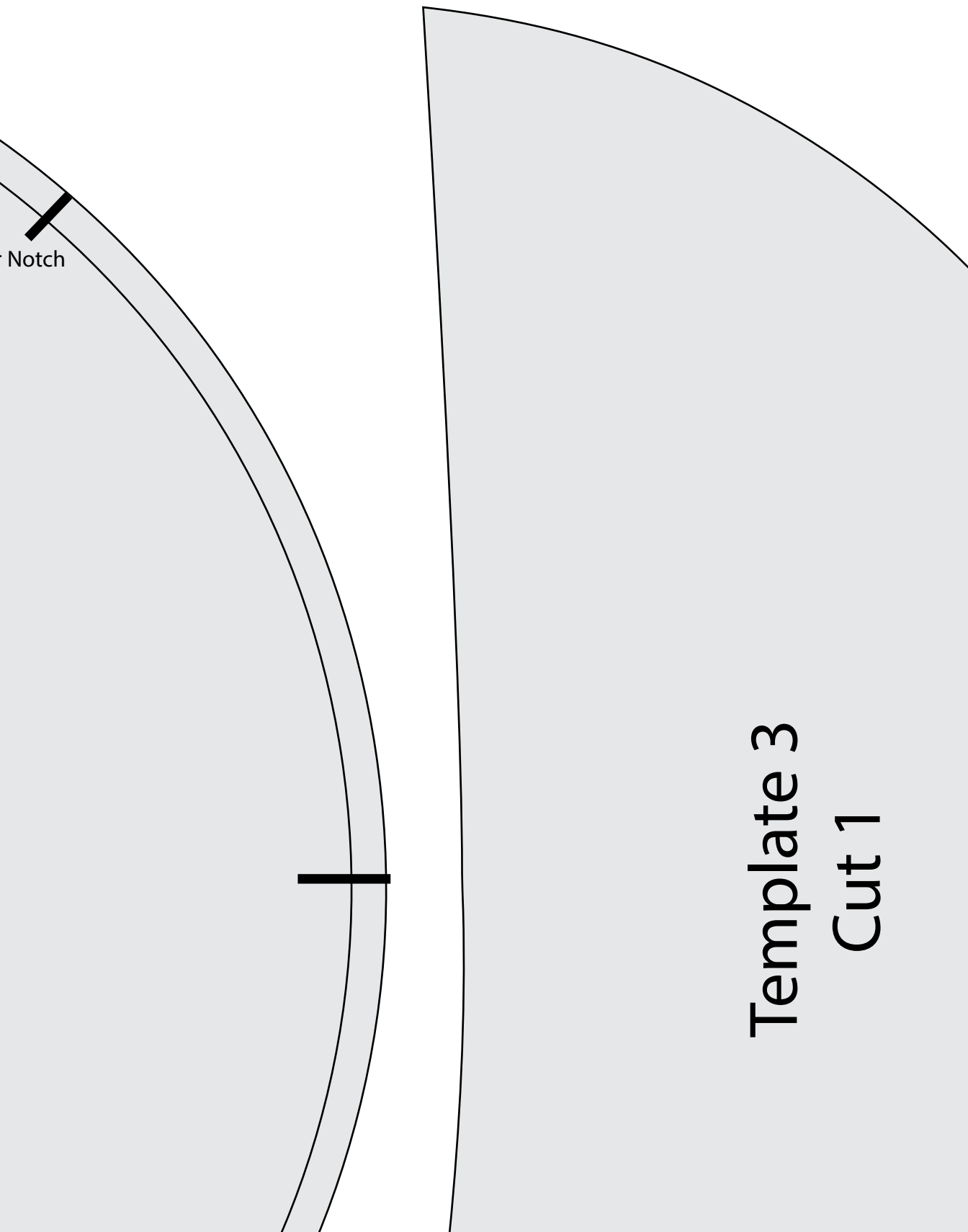


Ear

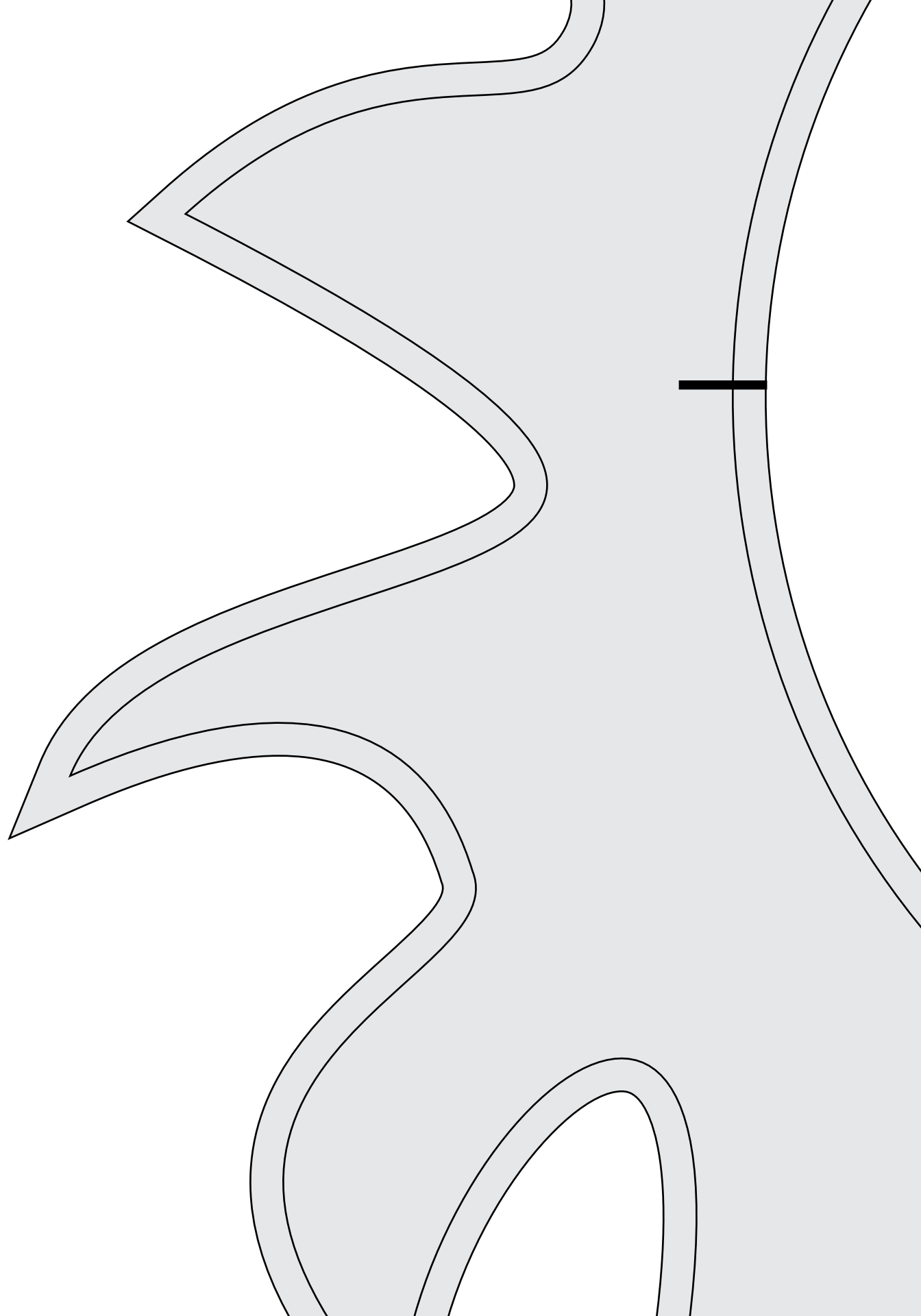
SLV-24511

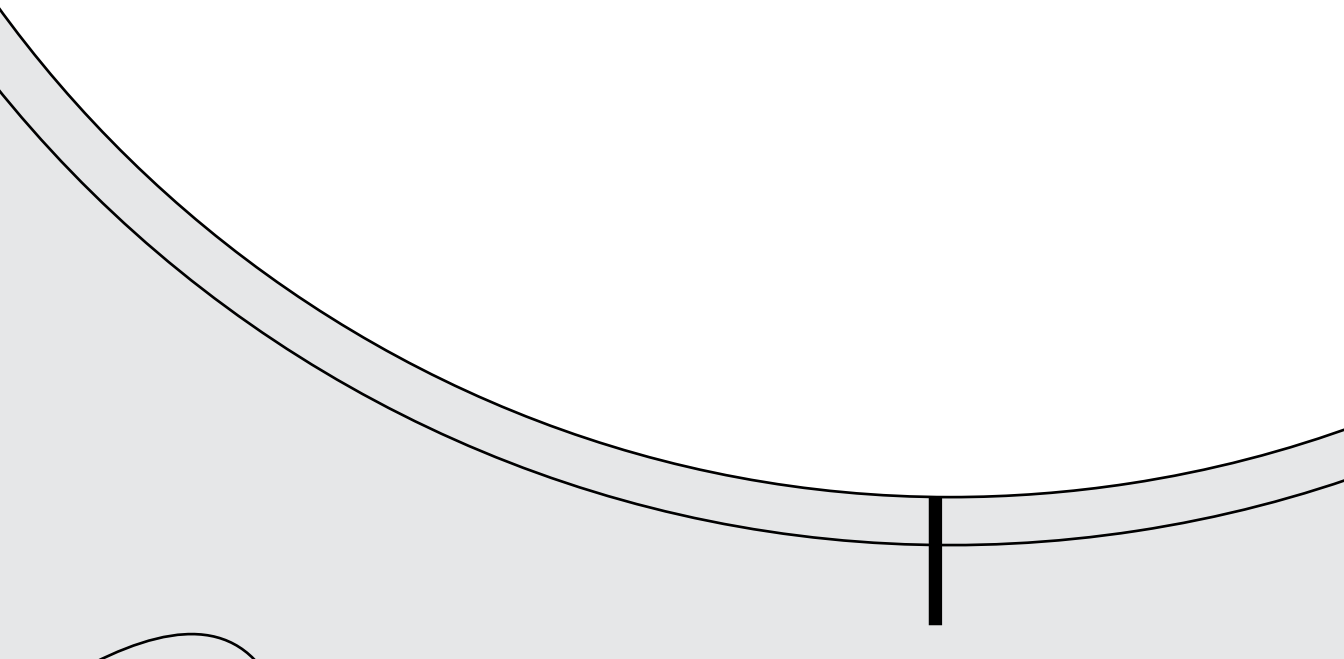
Template 2

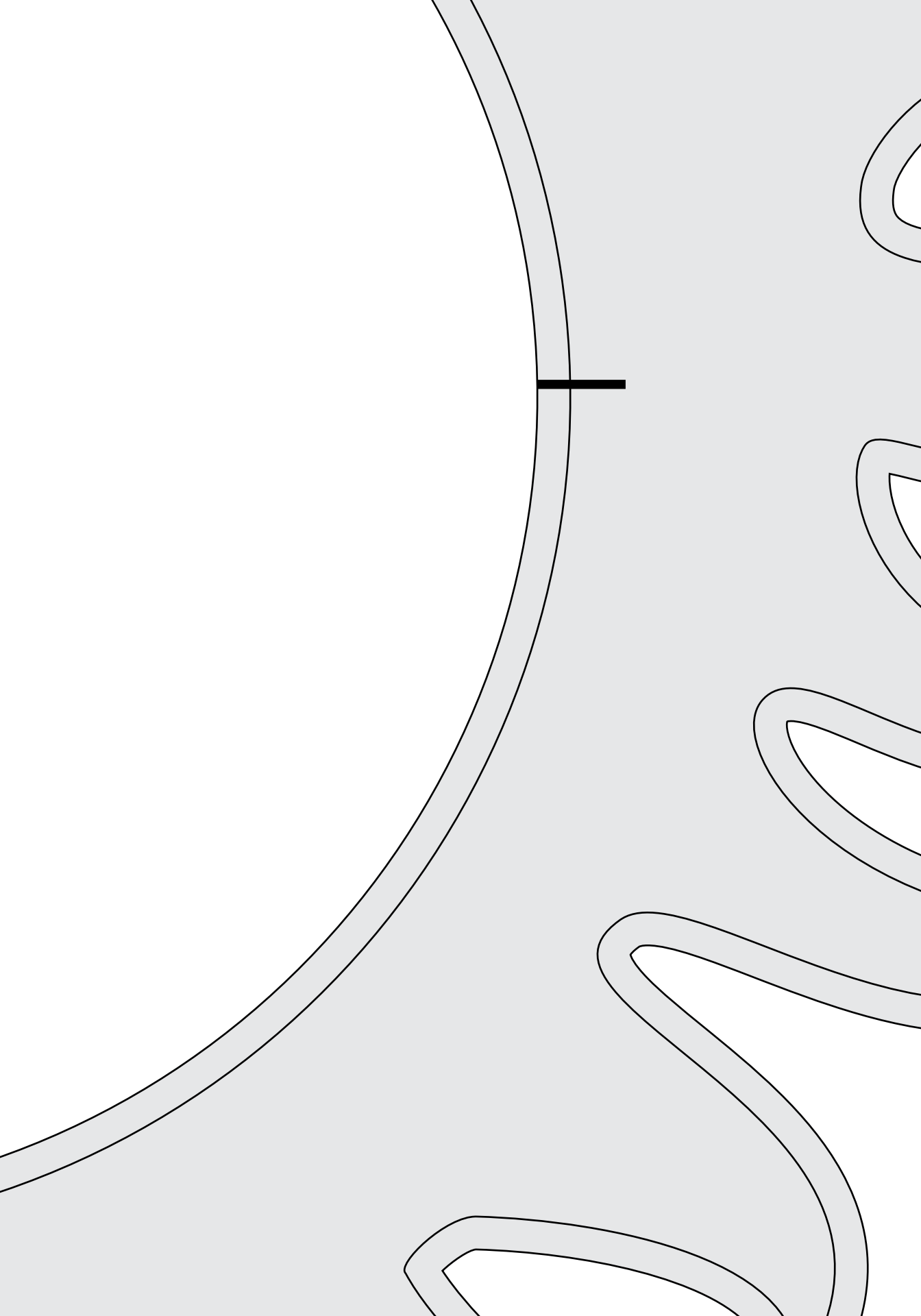
Cut 2

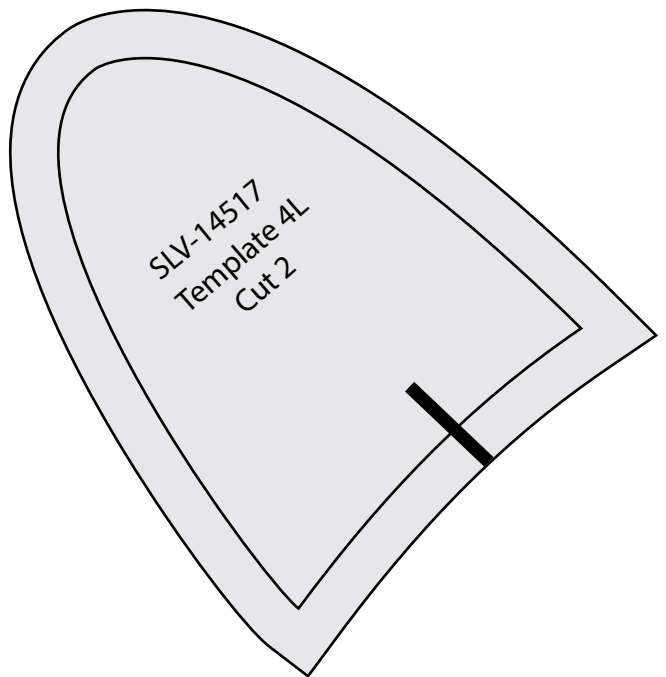
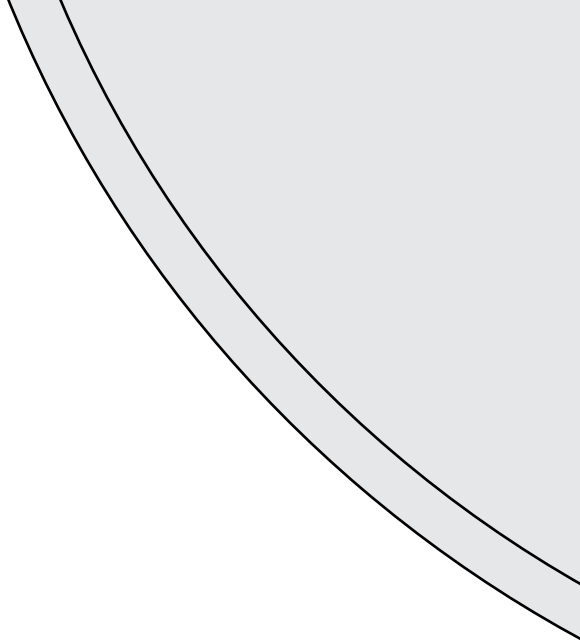
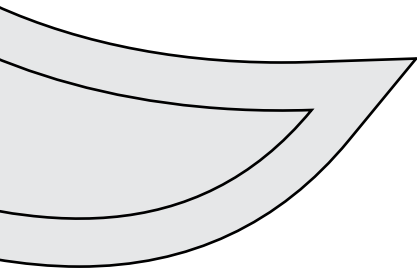
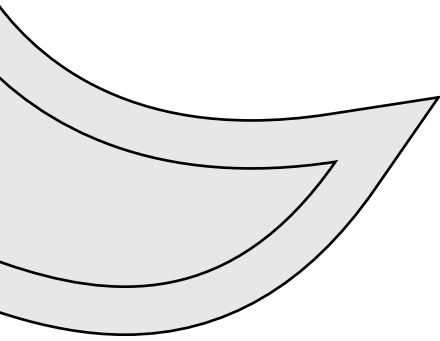
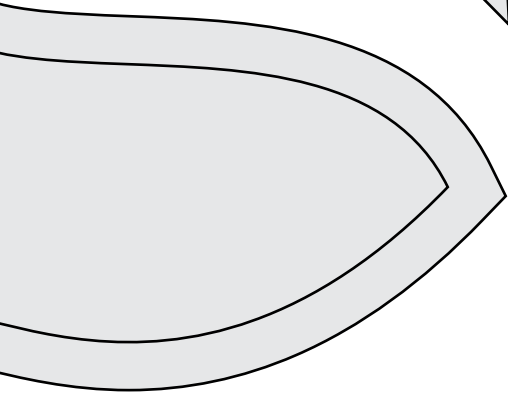
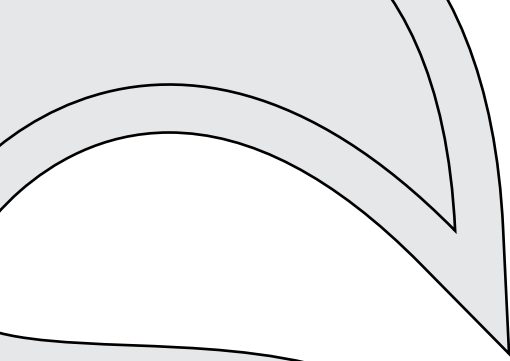


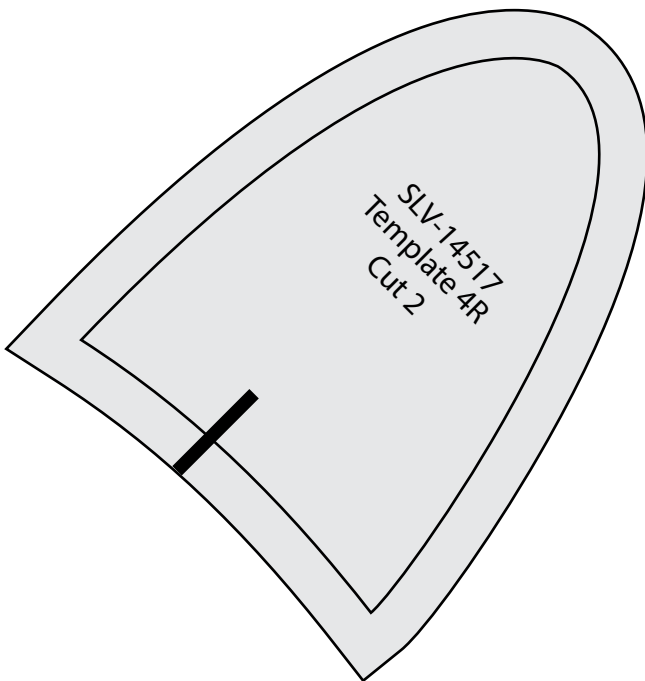
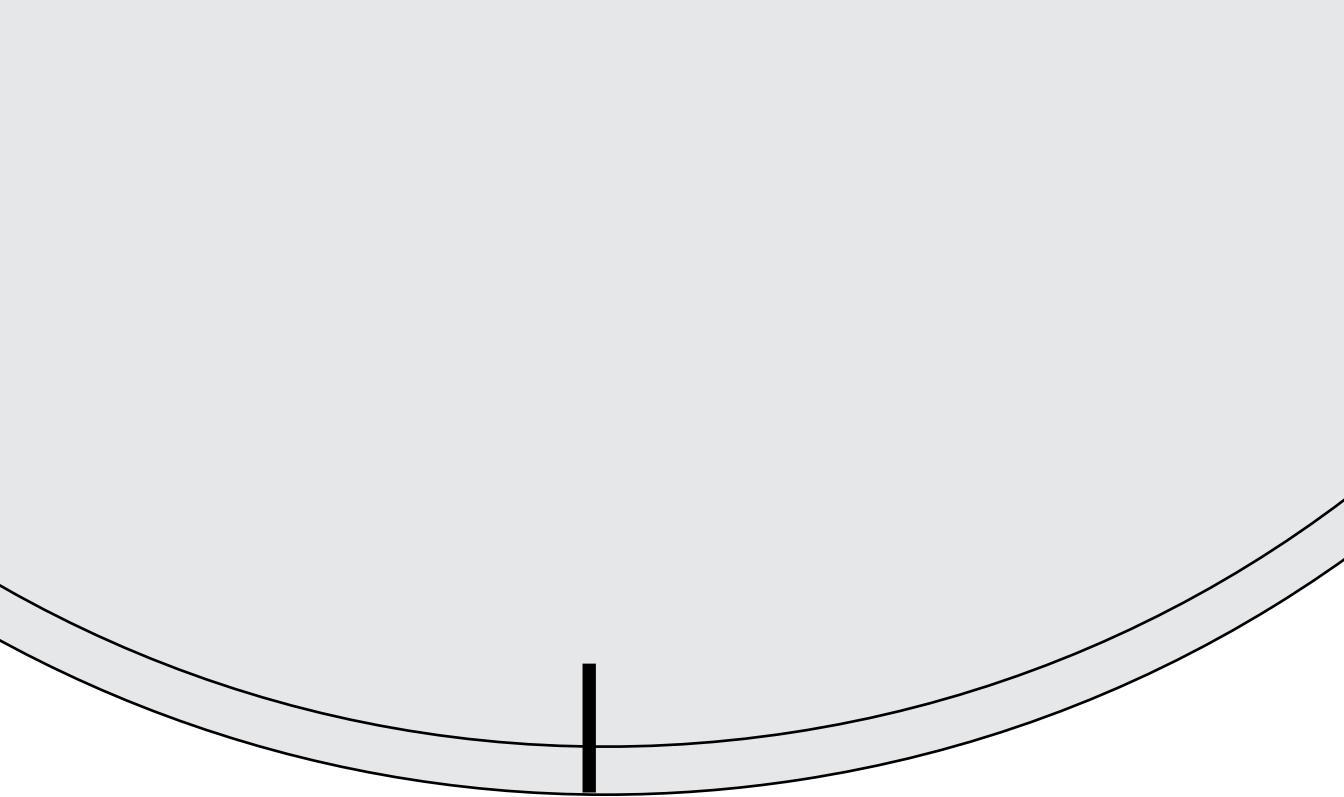
Template 3
Cut 1

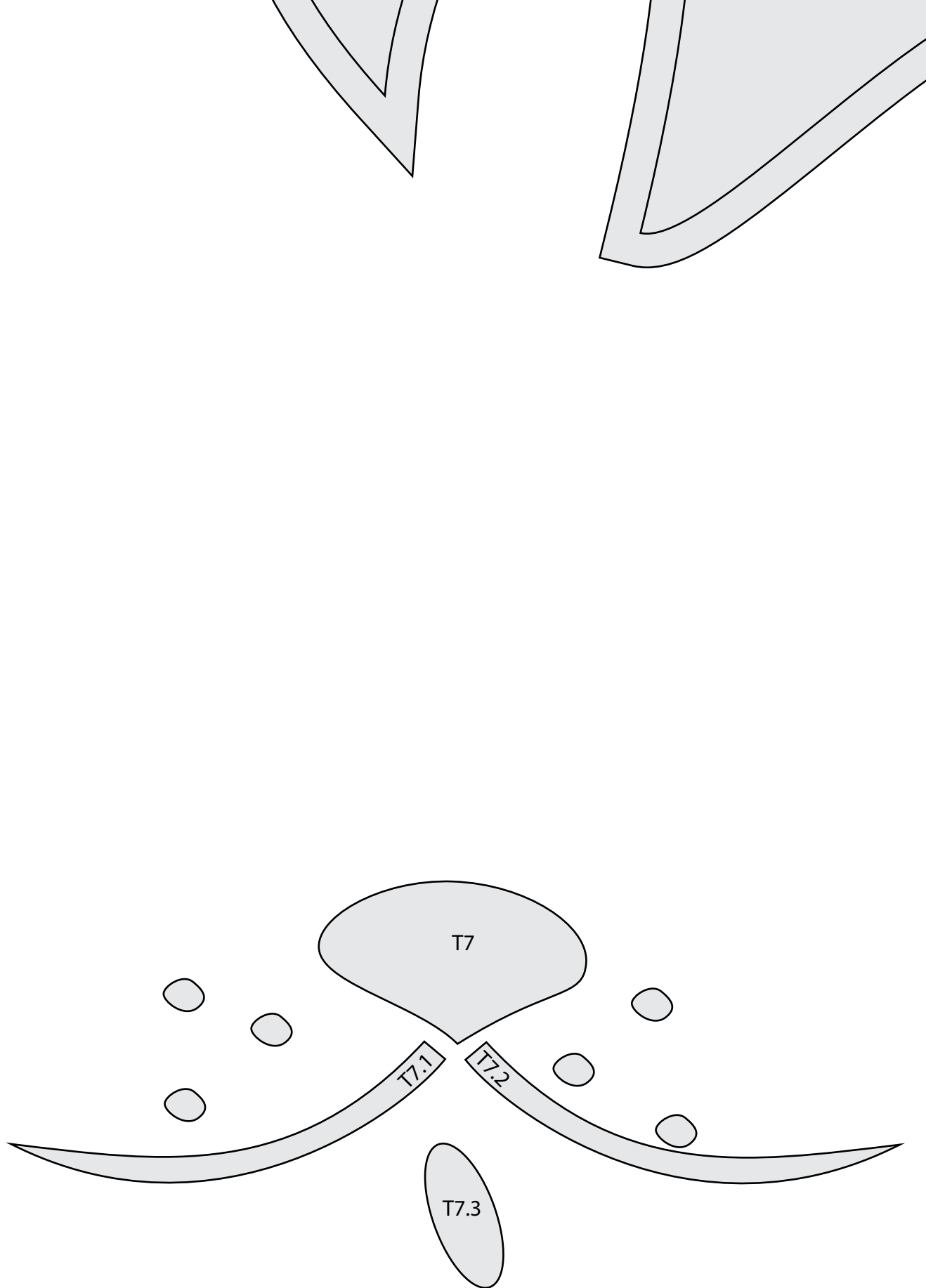












SLV-24512

Template 1

Cut 2

