

A quilt square with a central panel featuring a blue and white pattern, surrounded by four triangular panels with blue and white patterns, and four corner panels with blue and white patterns. The quilt is displayed on a red background with green leaves.

Jungle Fever



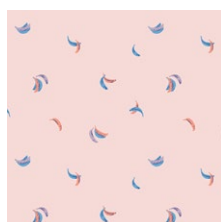
Selva

FABRICS DESIGNED BY AGF STUDIO

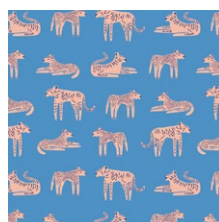
SAVANNAH



SLV-14510
JUNGLEN JOLLY



SLV-14511
BE BANANAS B1



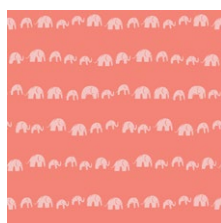
SLV-14512
FIERCE FELINES FRESH



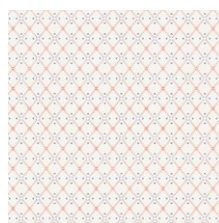
SLV-14513
PICK A PEAK PURE



SLV-14514
LUSH LIONS LILAC



SLV-14515
ELEPHANTS' ECHO EARTHY



SLV-14516
WISPY WEB WIND

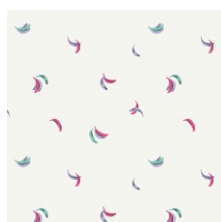


SLV-14517
SWAYING SLOTHS SKY

SIERRA



SLV-24510
JUNGLEN JOYOUS



SLV-24511
BE BANANAS B2



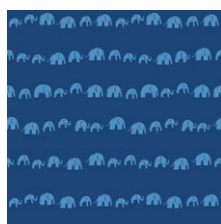
SLV-24512
FIERCE FELINES FUCSIA



SLV-24513
PICK A PEAK PLANTA



SLV-24514
LUSH LIONS LOVE



SLV-24515
ELEPHANTS' ECHO ELECTRIC



SLV-24516
WISPY WEB WAVE



SLV-24517
SWAYING SLOTHS SERENE



FEEL THE DIFFERENCE © 2019 Courtesy of Art Gallery Quilts LLC. All Rights Reserved.



FINISHED SIZE | 10½" x 10½"

FABRIC REQUIREMENTS

Block 1

Fabric A	SLV-14517	F8
Fabric B	SLV-24517	F8
Fabric C	PE-496	F8
Fabric D	PE-467	F8
Fabric E	PE-455	F8

Block 2

Fabric F	SLV-14514	F8
Fabric G	SLV-24514	F8
Fabric H	PE-495	F8
Fabric I	PE-474	F8
Fabric J	PE-420	F8

Block 3

Fabric J	PE-420	included
Fabric K	SLV-24512	F8
Fabric L	SLV-14512	F8
Fabric M	PE-476	F8
Fabric N	PE-450	F8

Block 4

Fabric O	SLV-24510	F8
Fabric P	SLV-14510	F8
Fabric Q	SLV-408	F8
Fabric R	PE-464	F8
Fabric S	PE-478	F8

CUTTING INSTRUCTIONS

¼" seam allowances are included.
WOF means width of fabric.

- Four (4) 3½" x 3½" square from Fabrics A, F, K, O
- One (1) 5" x 5" square from Fabrics B, G, L, P
- Eight (8) 2¾" x 2¾" square from Fabrics C, H, J, M, Q
- Four (4) 2¾" x 2¾" square from Fabrics D, E, I, N, R, S
- Four (4) 2" x 2" square from Fabrics D, E, I, N, R, S
- Eight (8) 2" x 2" square from Fabric J

CONSTRUCTION

Sew all rights sides together with ¼" seam allowance.

- Start with the HST method in order to assemble the following units on the diagram below.

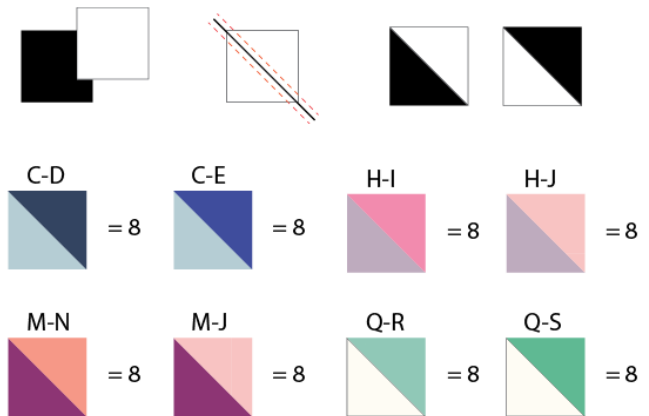


DIAGRAM 1

- Now, take two C-D and one Fabric D 2" x 2" square and pair them in a row as in the diagram below.
- Assemble a total of 4 rows with the same fabric combination.



DIAGRAM 2

- Take two C-E and one Fabric E 2" x 2" square and pair them in a row as in the diagram below.
- Assemble a total of 4 rows with the same fabric combination.



DIAGRAM 3

- Now, take one CD-D-CD strip and one CE-E-CE strip and join them as in the diagram below
- Join four blocks.

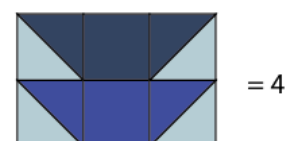


DIAGRAM 4

- Take two 3½" x 3½" square from Fabric A and one assembled unit and pair one Fabric A piece on each side.

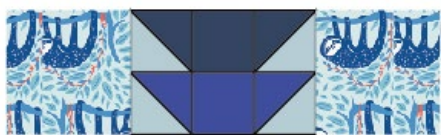


DIAGRAM 5

- Pair another row but this time rotate your assembled piece facing up.

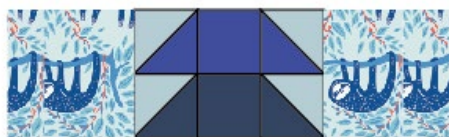


DIAGRAM 6

- Take two assembled units and pair one on each side of a 5" x 5" square from Fabric B.



DIAGRAM 7

- Now, pair all three pieces as in the diagram below in order to complete your block.

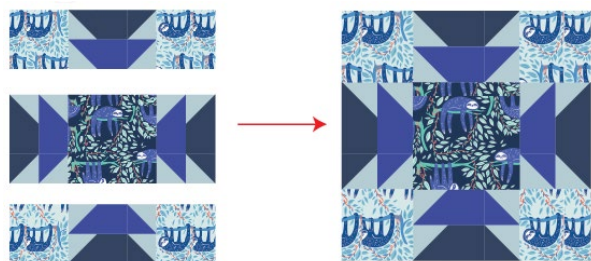


DIAGRAM 8

- Complete your block by quilting as desired.
- And follow the same instructions for the other block assembly.



XXXXXXXXXXXXXXXXXXXXXXXXXXXX

Congratulations
& enjoy

XXXXXXXXXXXXXXXXXXXXXXXXXXXX



artgalleryfabrics.com

NOTE: While all possible care has been taken to ensure the accuracy of this pattern, We are not responsible for printing errors or the way in which individual work varies. Please read instructions carefully before starting the construction of this quilt. If desired, wash and iron your fabrics before starting to cut.

© 2019 Courtesy of Art Gallery Quilts LLC. All Rights Reserved.



