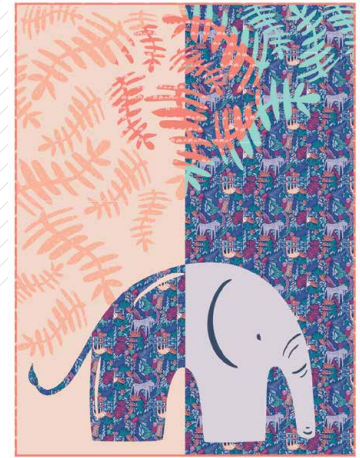


QUILT DESIGNED BY AGF STUDIO



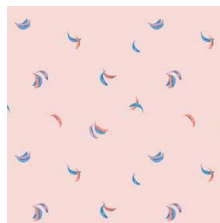
FABRICS DESIGNED BY AGF STUDIO



SAVANNAH



SLV-14510
JUNGLEN JOLLY



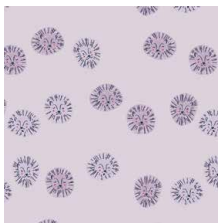
SLV-14511
BE BANANAS B1



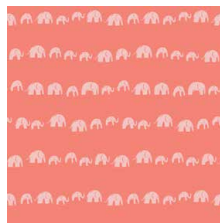
SLV-14512
FIERCE FELINES FRESH



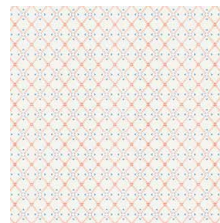
SLV-14513
PICK A PEAK PURE



SLV-14514
LUSH LIONS LILAC



SLV-14515
ELEPHANTS' ECHO EARTHY



SLV-14516
WISPY WEB WIND

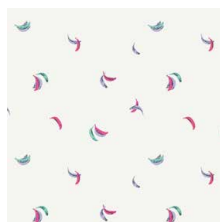


SLV-14517
SWAYING SLOTHS SKY

SIERRA



SLV-24510
JUNGLEN JOYOUS



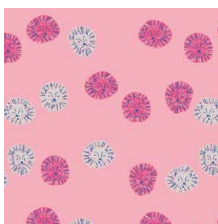
SLV-24511
BE BANANAS B2



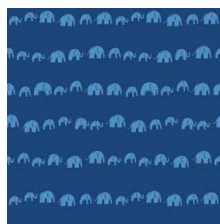
SLV-24512
FIERCE FELINES FUCSIA



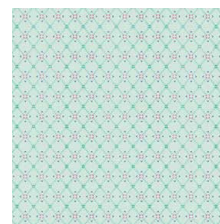
SLV-24513
PICK A PEAK PLANTA



SLV-24514
LUSH LIONS LOVE



SLV-24515
ELEPHANTS' ECHO ELECTRIC



SLV-24516
WISPY WEB WAVE



SLV-24517
SWAYING SLOTHS SERENE



FEEL THE DIFFERENCE © 2019 Courtesy of Art Gallery Quilts LLC. All Rights Reserved.



FINISHED SIZE | 45" x 60"

FABRIC REQUIREMENTS

Fabric A	SLV-14510	1 $\frac{5}{8}$ yd.
Fabric B	SLV-14513	$\frac{7}{8}$ yd.
Fabric C	SLV-14515	$\frac{5}{8}$ yd.
Fabric D	PE-471	$\frac{7}{8}$ yd.
Fabric E	PE-403	$\frac{3}{4}$ yd.
Fabric F	PE-470	$\frac{3}{4}$ yd.
Fabric G	PE-467	F8

BACKING FABRIC

SLV-14514 2 yds. *(Suggested)*

BINDING FABRIC

Fabric C *(Included)*

CUTTING INSTRUCTIONS

$\frac{1}{4}$ " seam allowances are included.
WOF means width of fabric.

- Two (2) 22" x 31" rectangles from fabric A.
- One (1) 21" x 26" rectangle from fabric A.
- Two (2) 22" x 24 $\frac{1}{2}$ " rectangles from fabric B.
- Two (2) 22" x 5 $\frac{1}{2}$ " rectangles from fabric B.
- One (1) template 1 from fabric C.
- Two (2) 22" x 31" rectangles from fabric D.
- One (1) template 11 and 12 from fabric D.
- One (1) 22" x 24 $\frac{1}{2}$ " rectangle from fabric E.
- One (1) 22" x 10" rectangle from fabric E.
- Two (2) 18" x 26" rectangle from fabric F.
- One (1) template 3, 4, 5, 6, 7, 8, 9, and 10 from fabric G.

CONSTRUCTION

Sew all rights sides together with $\frac{1}{4}$ " seam allowance.

Block a:

- Take two (2) 22" x 31" rectangles from fabrics A and D.
- Join the rectangles from fabric A by the 22" side.
- Join the rectangles from fabric D by the 22" side.
- Join the resulting rectangles Diagram 1:

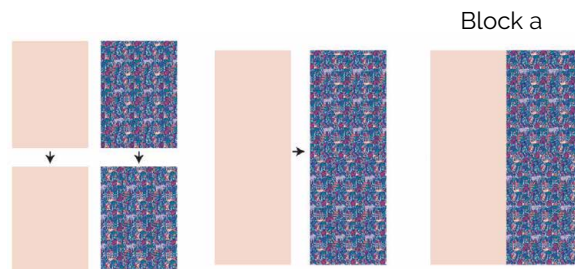


DIAGRAM 1

Block b:

- Take one (1) 22" x 24 $\frac{1}{2}$ " rectangle from fabrics B and E.
- Use template 2 to cut them.
- Join template 2 from fabric B to template 2 from fabric E.

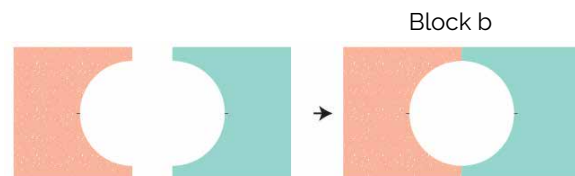


DIAGRAM 2

- Take one (1) template 1 from fabric C and join it to Block b.

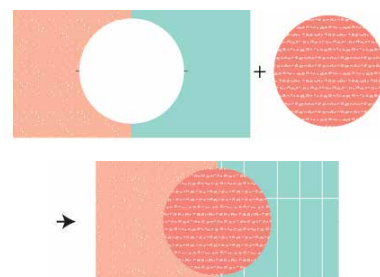


DIAGRAM 3

- Take one (1) 22" x 24½" rectangle from fabric B, two (2) 22" x 5½" rectangles from fabric B, and one (1) 22" x 10" rectangle from fabric E.
- Join them following Diagram 4.
- Join the resulting piece to block b:

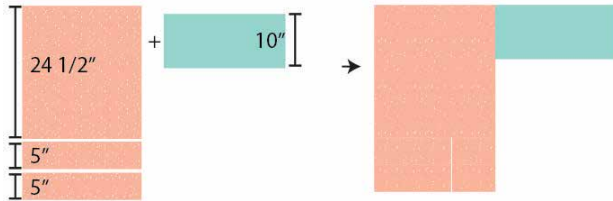
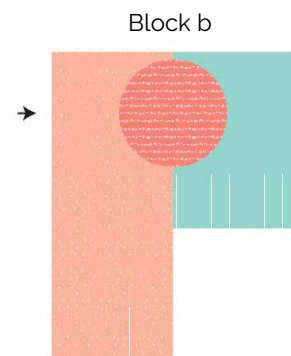


DIAGRAM 4



- Take one (1) 21" x 26" rectangle from fabric A and two (2) 18" x 26" rectangle from fabric F.
- Join them following Diagram 5.
- Take template 13 and cut it aligning the center line of the elephant with the seam.

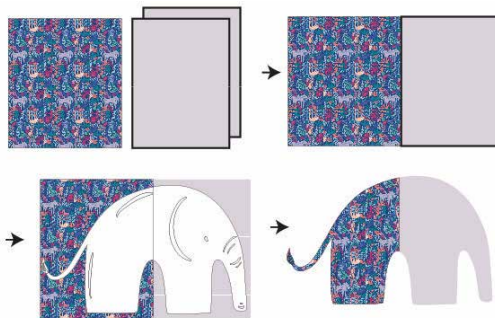


DIAGRAM 5

- Take one (1) template 11 and 12 from fabric D, and one (1) template 3, 4, 5, 6, 7, 8, 9, and 10 from fabric G.
- Appliqué them to the elephant following template 13:



DIAGRAM 6

- Appliqué the elephant 2 inches above the bottom edge of Block a, and center it so the center seams match.
- Take Block b and layer it under Block a making sure the right side of block b is facing the wrong side of block a.

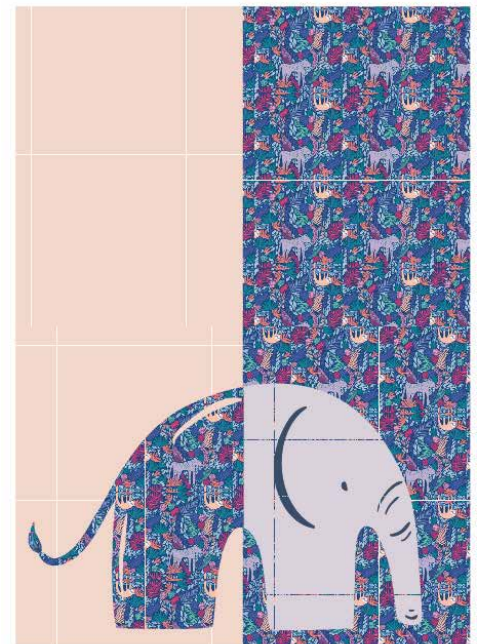


DIAGRAM 7

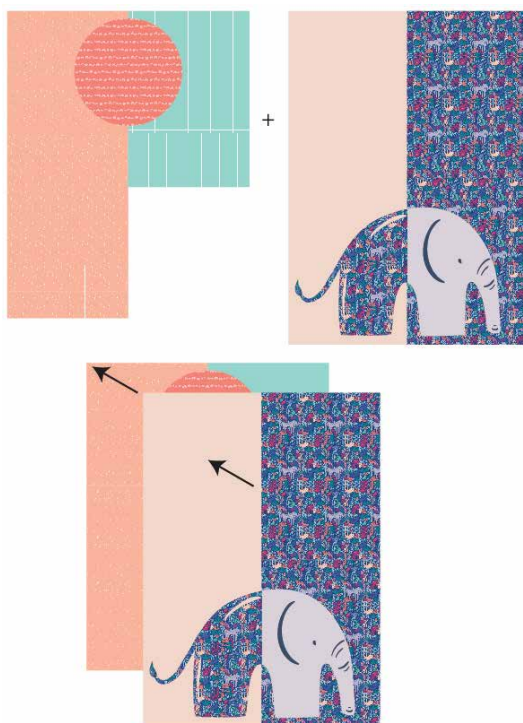


DIAGRAM 8

- With a fabric pen draw the leaves on the quilt as guide where you are going to stitch using templates 14 -19.
- Layer your quilt top with the batting and the backing and start quilting the leaves.
- Top-stitch the edge of the elephant and the appliques.
- Carefully cut inside the leaves to expose the fabrics of block b through the leaves shapes.



DIAGRAM 9

TEMPLATES

- Follow Diagram 10 to join the template pages:

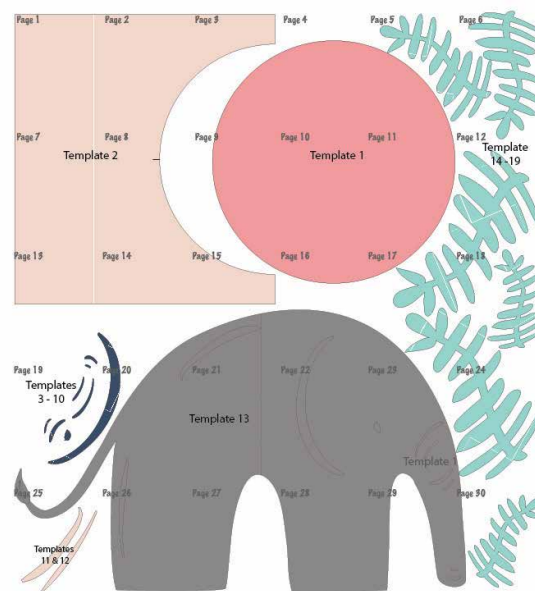


DIAGRAM 10

QUILT ASSEMBLY

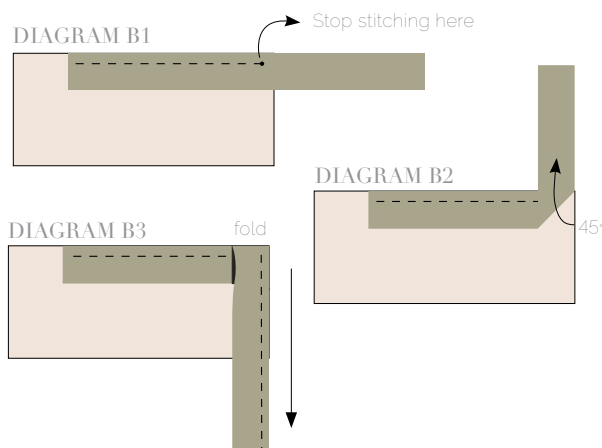
Sew rights sides together

- Place BACKING FABRIC on a large surface wrong side up. Stretch it with masking tape against that surface.
- Place BATTING on top of backing fabric.
- Place TOP on top of the batting with right side facing up. Smooth away wrinkles using your hands.
- Pin all layers together and baste with basting thread, using long stitches. You can also use safety pins to join the layers.
- Machine or hand quilt starting at the center and working towards the corners. Remember that quilting motifs are a matter of personal preference. Have fun choosing yours!
- After you finished, trim excess of any fabric or batting, squaring the quilt to proceed to bind it.

BINDING

Sew rights sides together.

- Cut enough strips 1 ½" wide by the width of the fabric **C** to make a final strip 220" long. Start sewing the binding strip in the middle of one of the sides of the quilt, placing the strip right side down and leaving an approximated 5" tail. Sew with ¼" seam allowance (using straight stitch), aligning the strip's raw edge with the quilt top's raw edge.
- Stop stitching ¼" before the edge of the quilt (DIAGRAM B1). Clip the threads. Remove the quilt from under the machine presser foot. Fold the strip in a motion of 45° and upward, pressing with your fingers (DIAGRAM B2). Hold this fold with your finger, bring the strip down in line with the next edge, making a horizontal fold that aligns with the top edge of the quilt (DIAGRAM B3). Start sewing at ¼" of the border, stitching all the layers. Do the same in the four corners of the quilt.
- Stop stitching before you reach the last 5 or 6 inches. Cut the threads and remove the quilt from under the machine presser foot. Lay the loose ends of the binding flat along the quilt edge, folding the ends back on themselves where they meet. Press them together to form a crease. Using this crease as the stitching line, sew the two open ends of the binding with right sides together (you can help yourself marking with a pencil if the crease is difficult to see).
- Trim seam to ¼" and press open. Complete the sewing. Turn binding to back of the quilt, turn raw edge inside and stitch by hand using blind stitch.



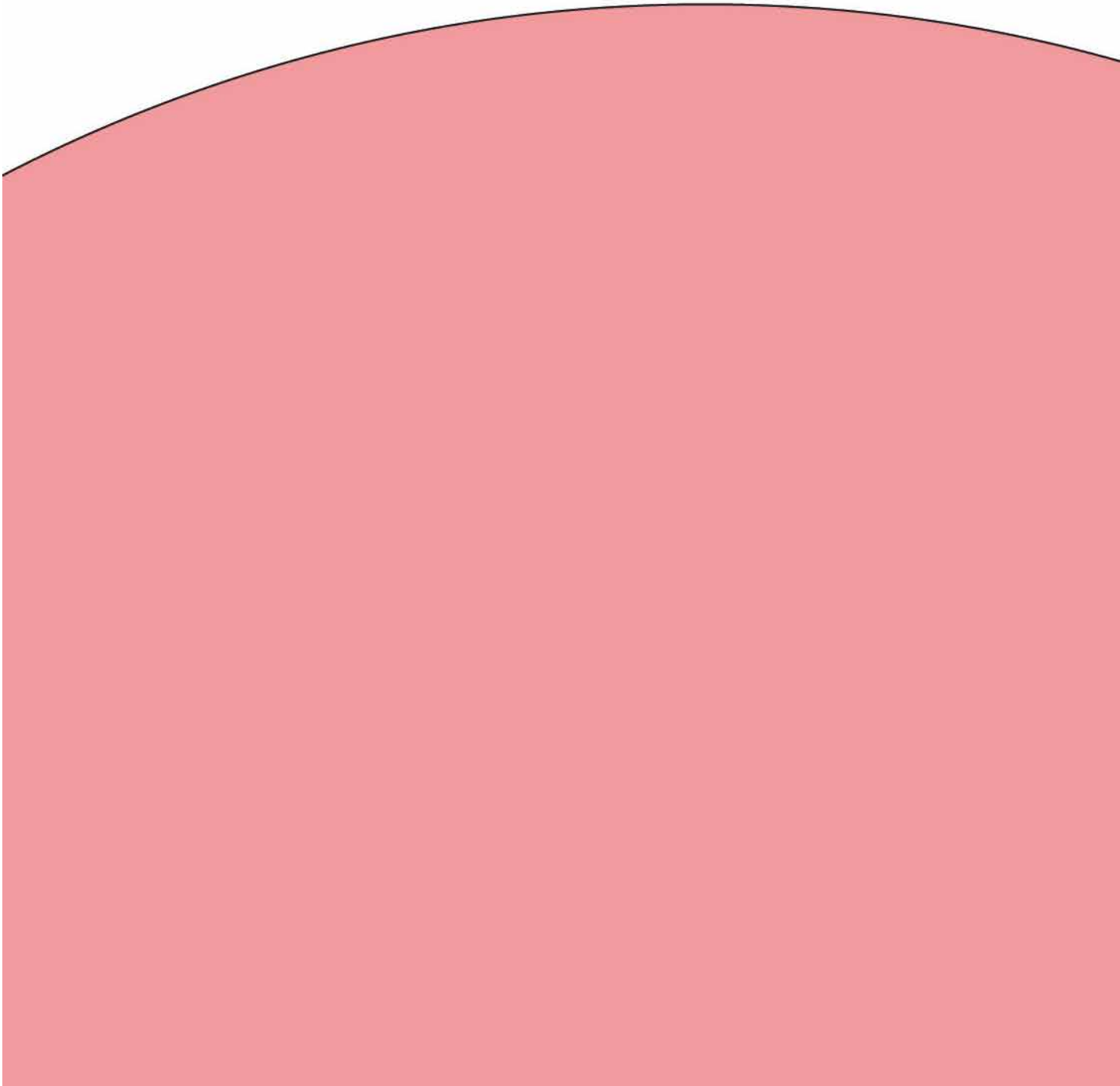
artgalleryfabrics.com

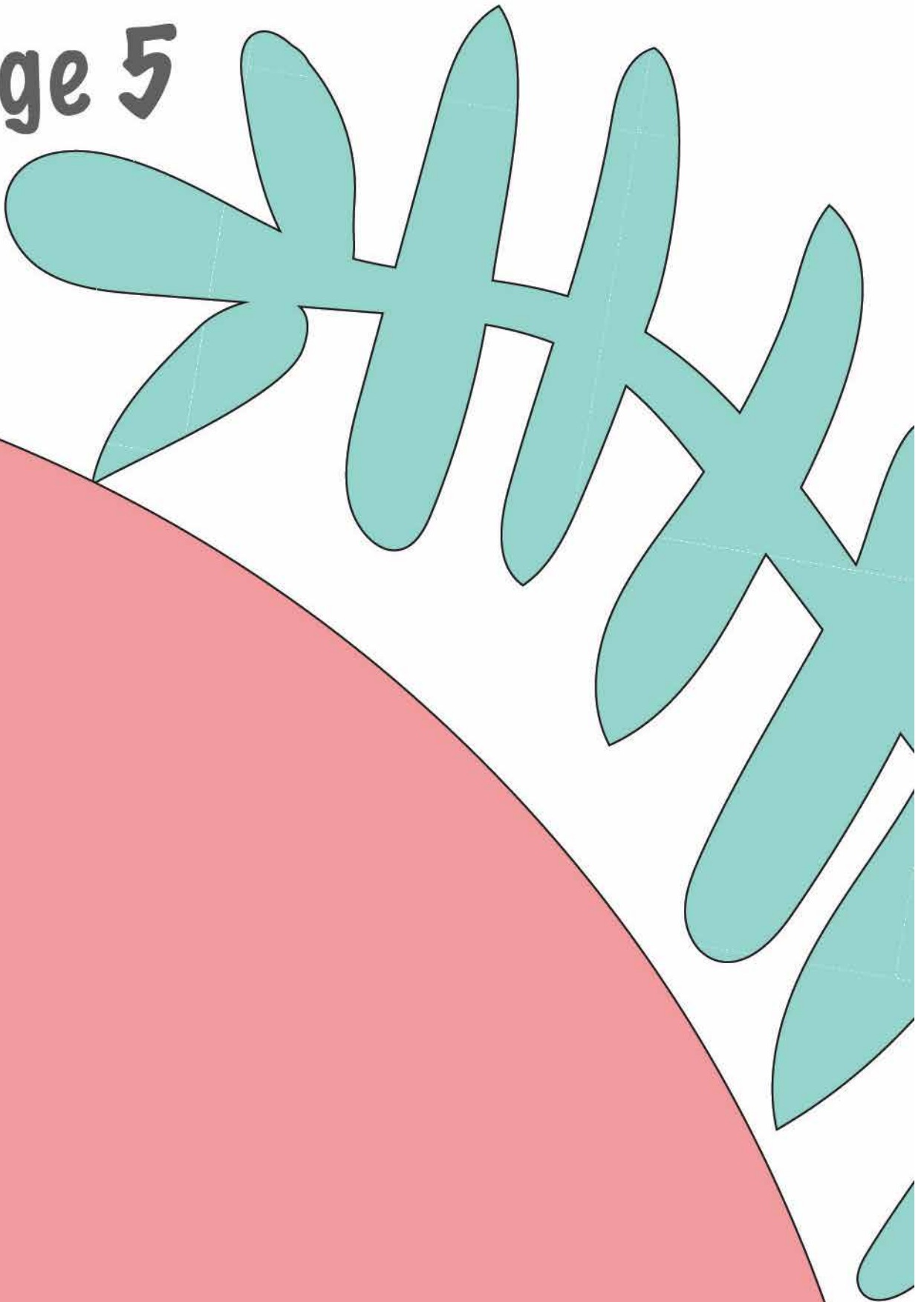
NOTE: While all possible care has been taken to ensure the accuracy of this pattern, We are not responsible for printing errors or the way in which individual work varies. Please read instructions carefully before starting the construction of this quilt. If desired, wash and iron your fabrics before starting to cut.

Page 1

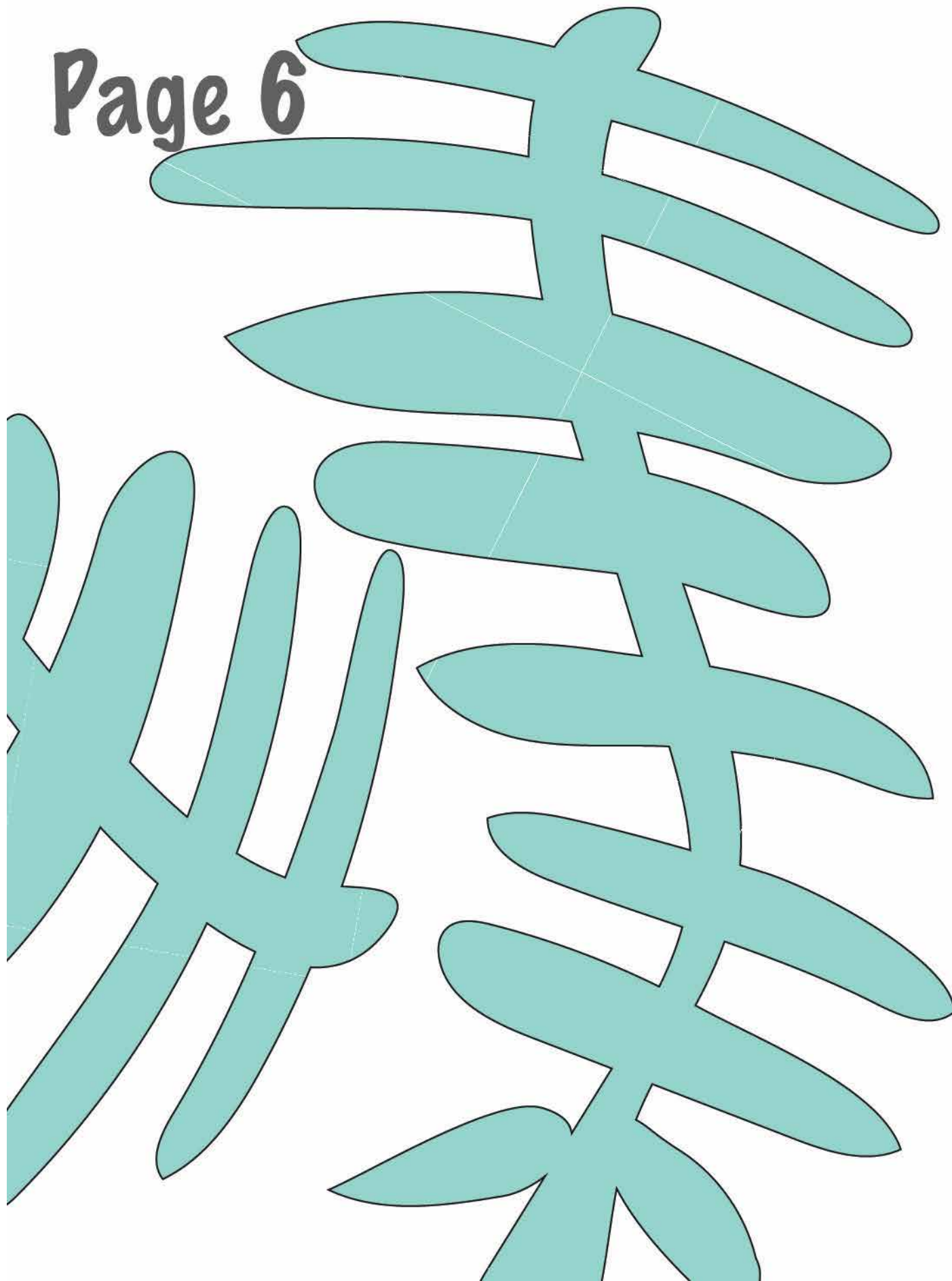
Page 2

Page 4





Page 6



Page 7

Templa

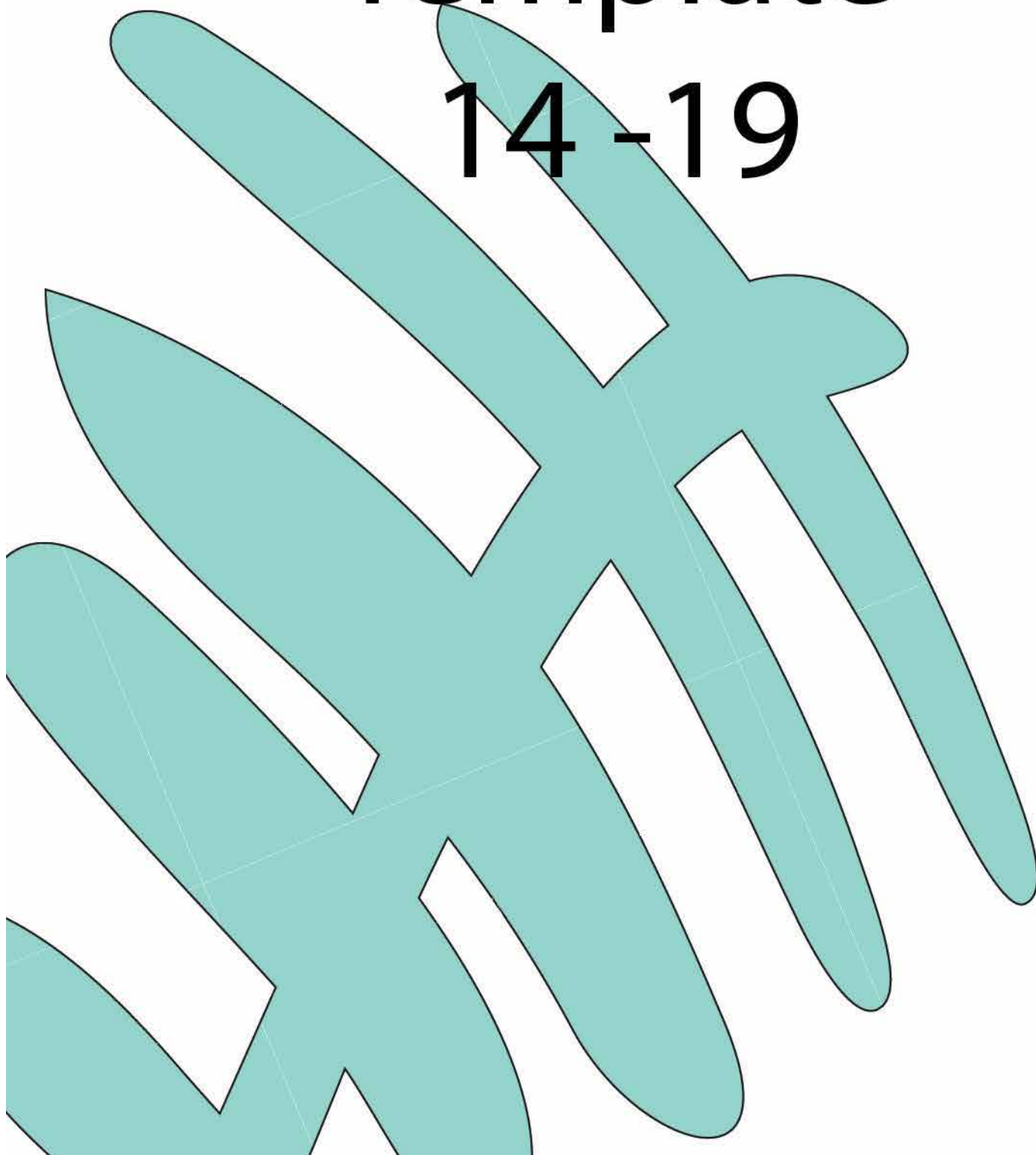
Page 10

Template 1

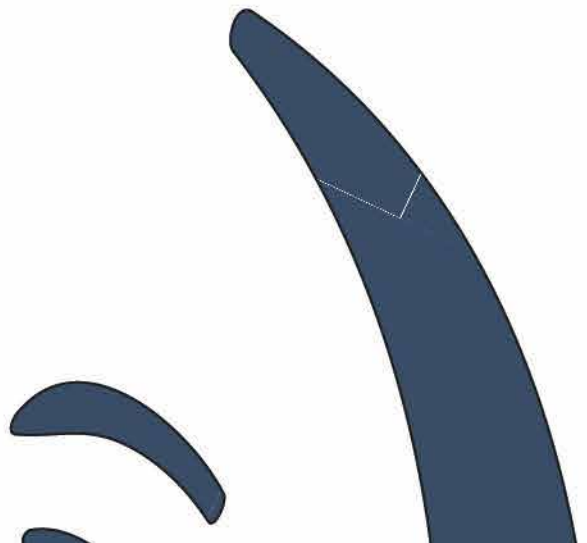
Page 11

Template

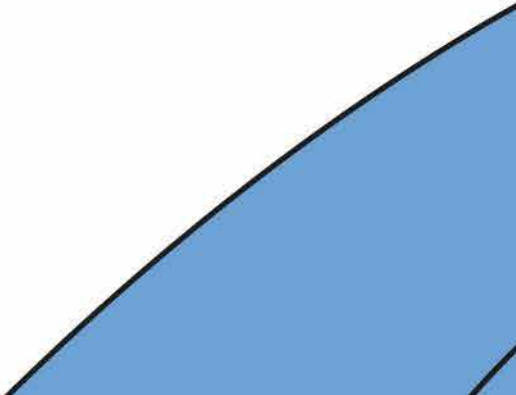
14-19



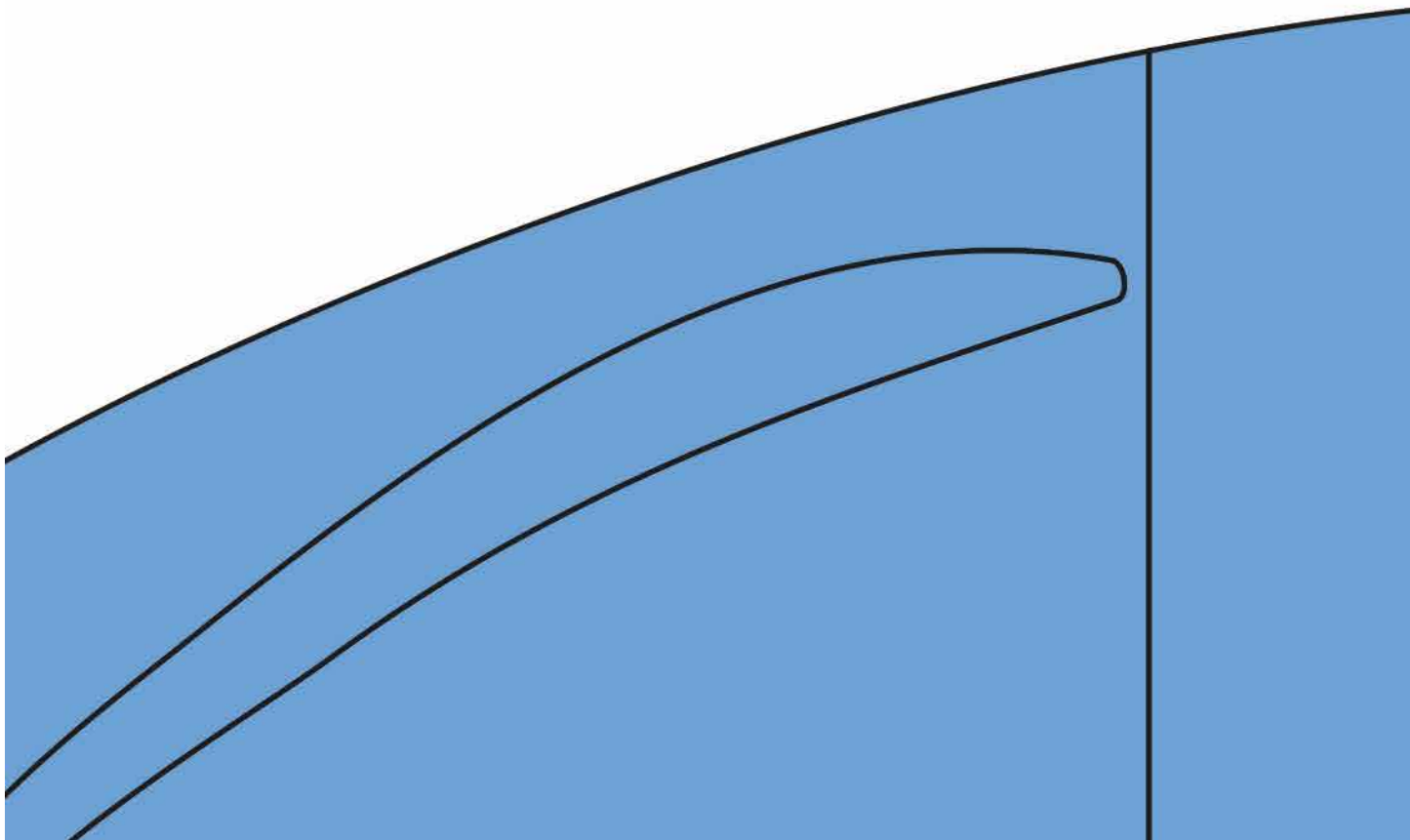
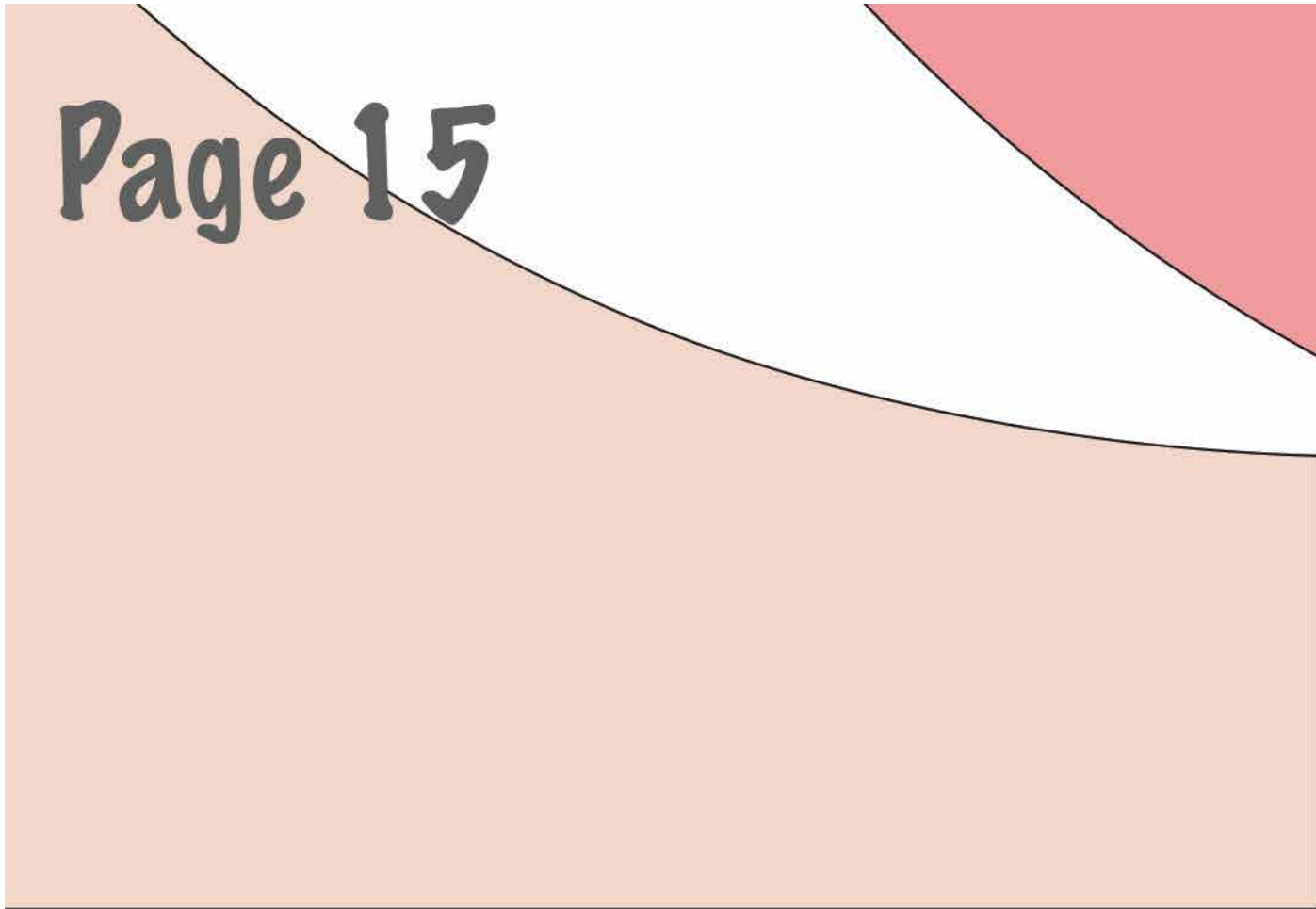
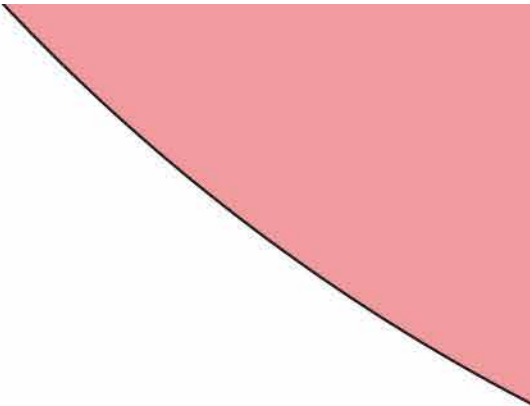
Page 13

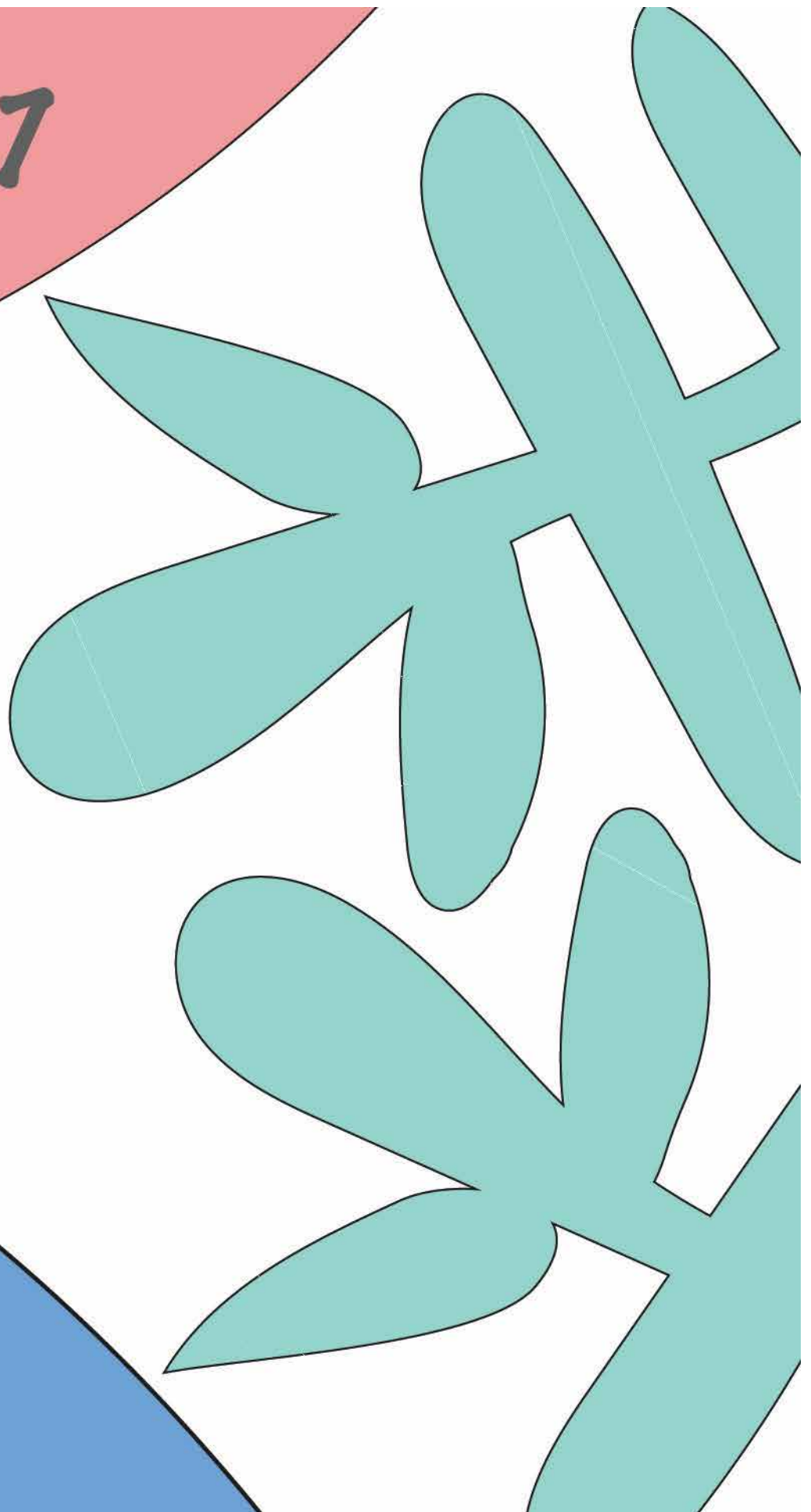


Page 14

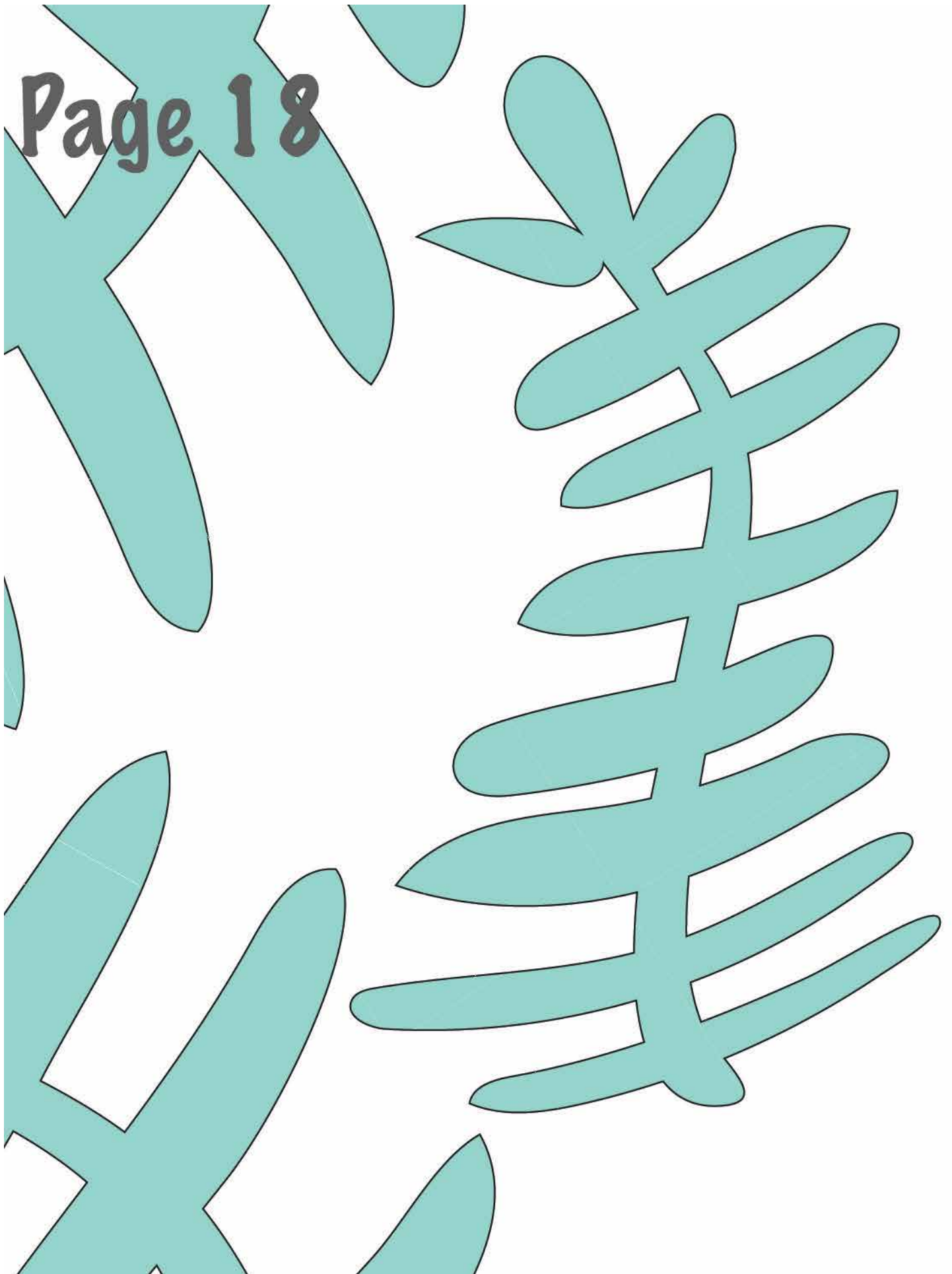


Page 15



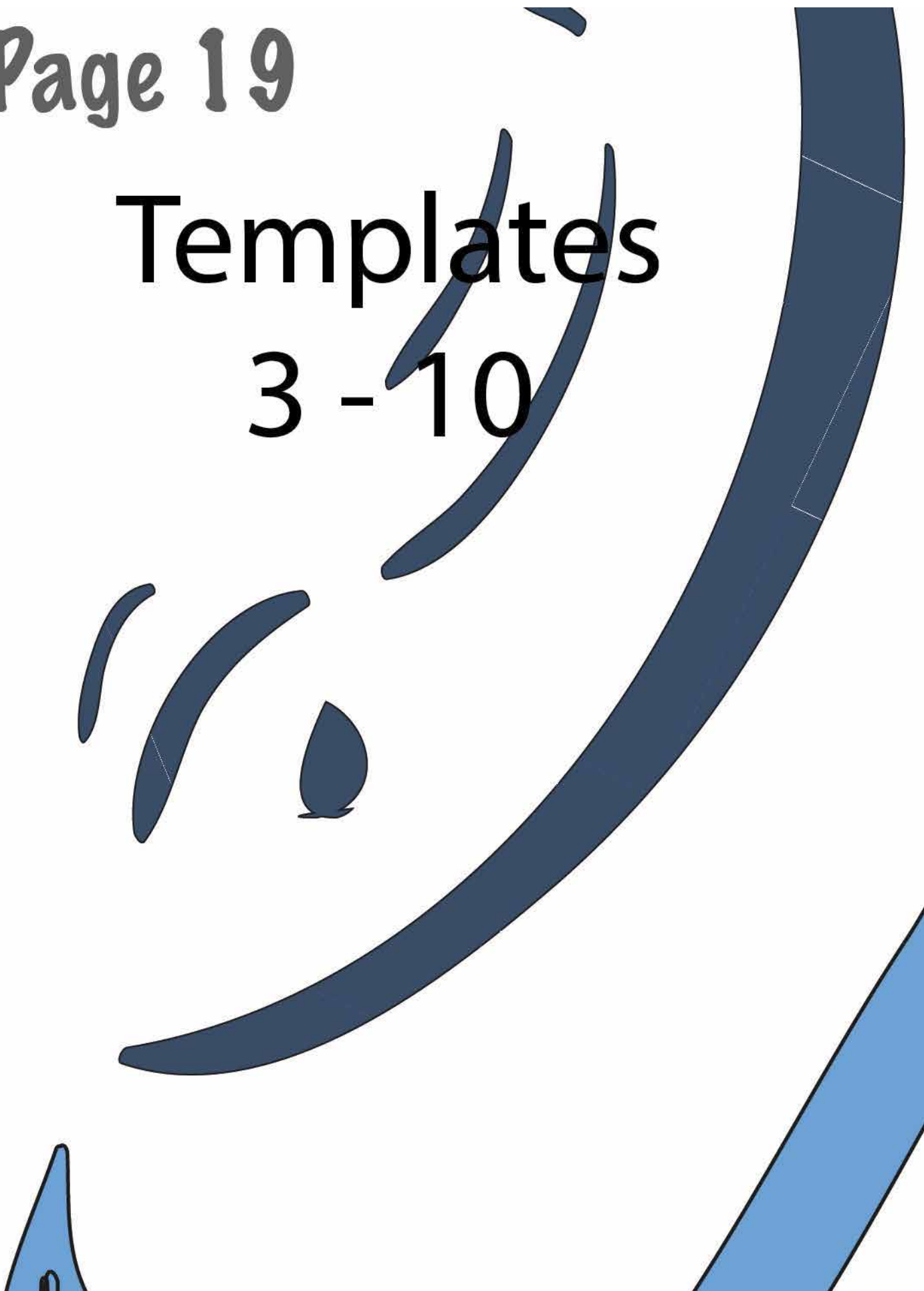


Page 18

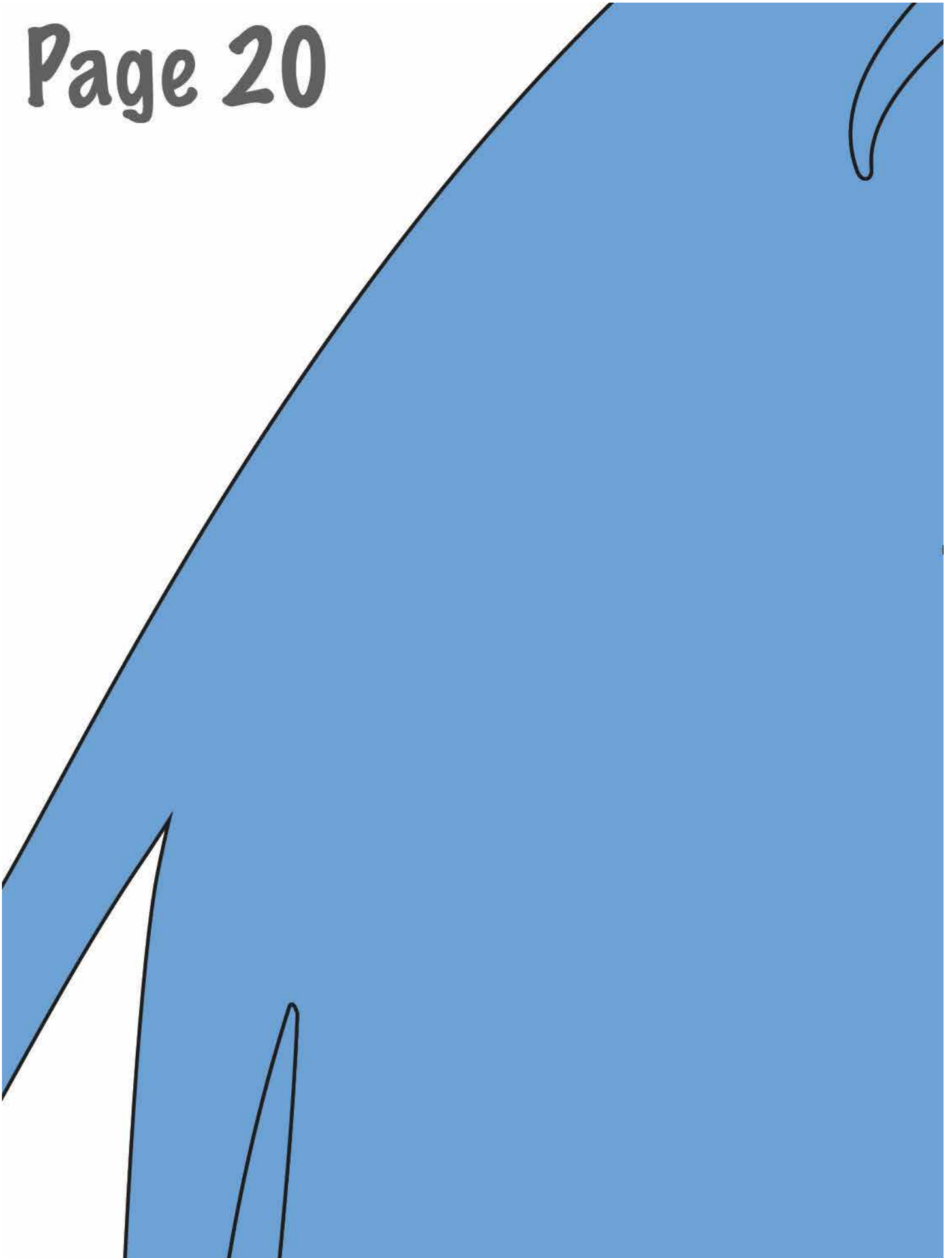


Page 19

Templates 3 - 10



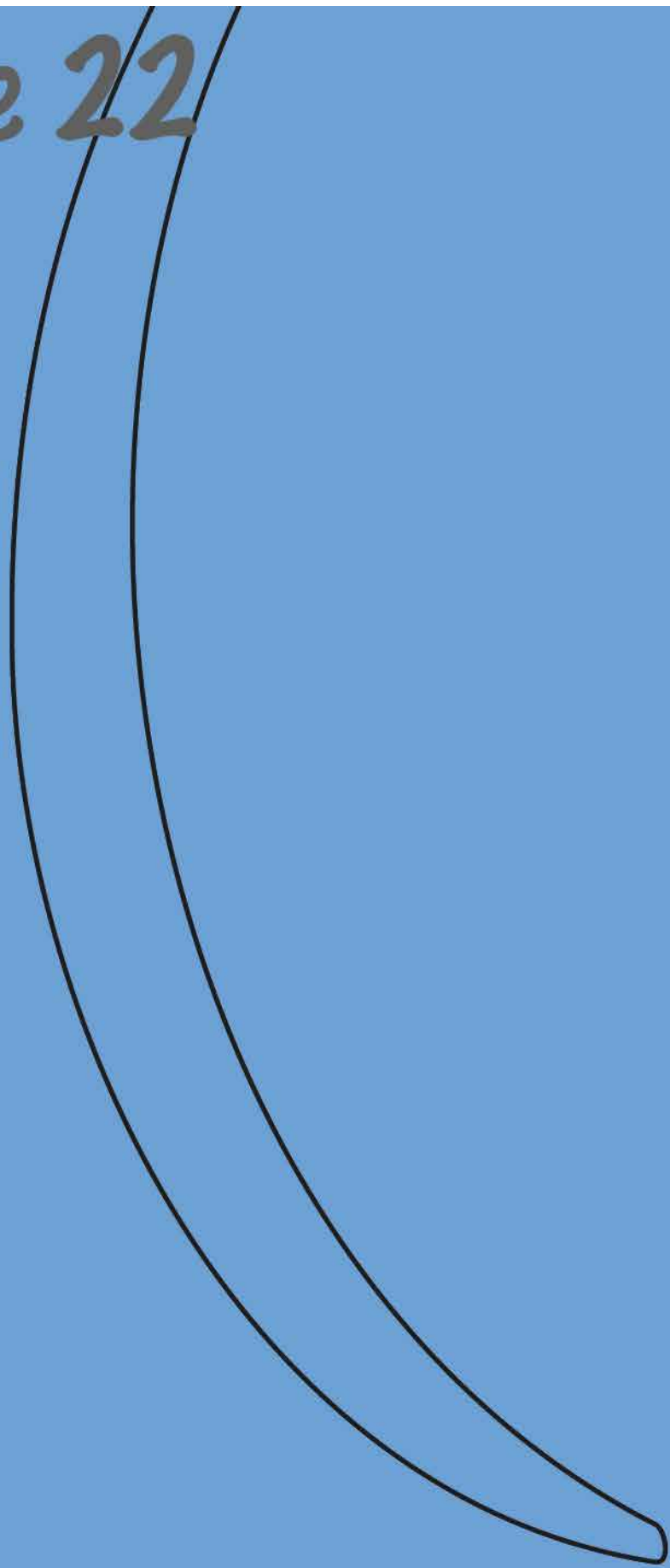
Page 20



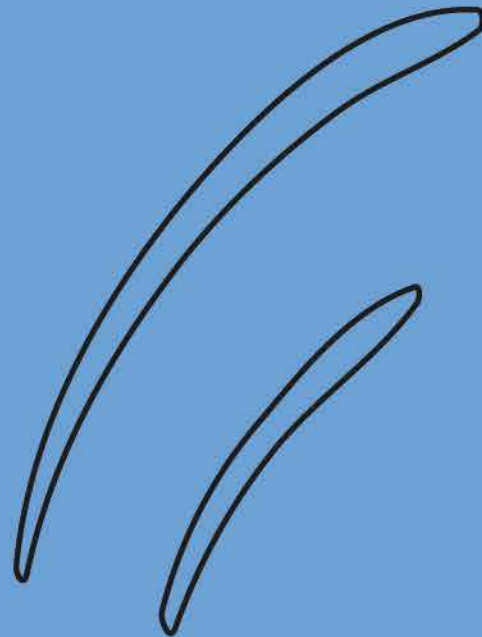
Page 21

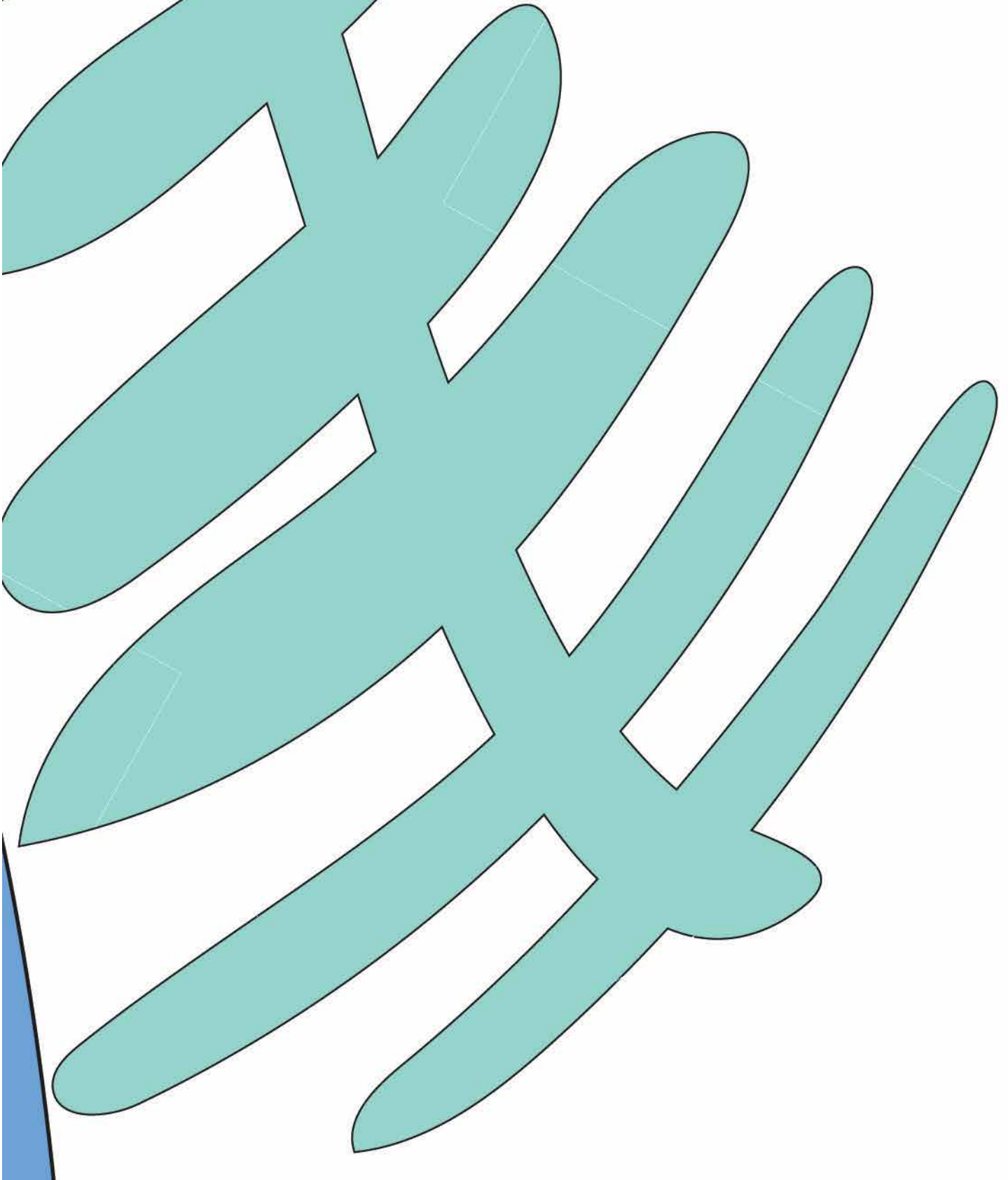
Template 13

Page 22



Page 23





Page 25

Templates

11 & 12

Page 26

Page 28

Page 30

