

XXXXXX

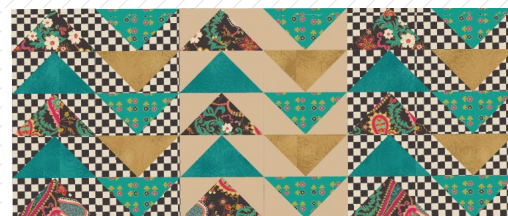
## A vibrant, multi-colored patchwork cushion is displayed on a rustic wooden bench. The cushion features a complex geometric design with triangles and squares in teal, mustard yellow, and black-and-white checkered patterns, interspersed with floral motifs. To the left of the cushion, a small potted plant with variegated green and white leaves sits in a red container. The background shows a black metal railing and a red wall.

XXXXXXXXXXXXXXXXXXXX



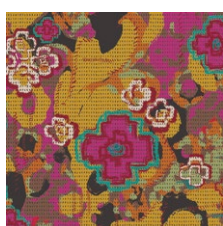


# Wanderlust

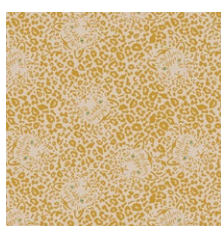


FABRICS DESIGNED BY PAT BRAVO

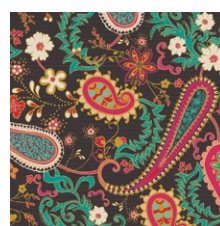
ALWAYS WITH ME



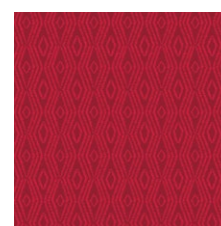
NUC-11980  
FLOWERS EVERYWHERE  
INTENTION



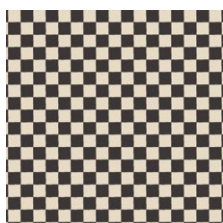
NUC-11981  
PRETTY EYES TWINKLY



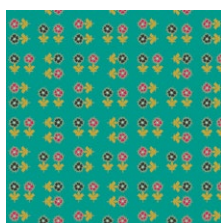
NUC-11982  
PAISLEYS FOREVER  
BOHEME



NUC-11983  
JUST MORE RED



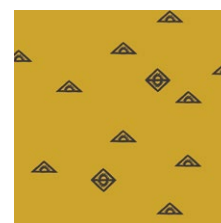
NUC-11985  
DANCE THIS TANGO



NUC-11987  
ALWAYS DO GOOD CIELO

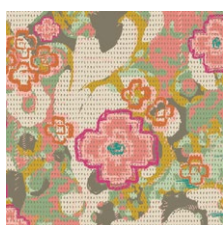


NUC-11988  
BUENOS AIRES SUD

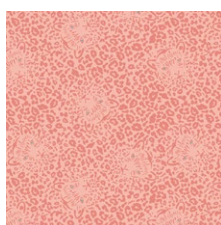


NUC-11989  
FAITH

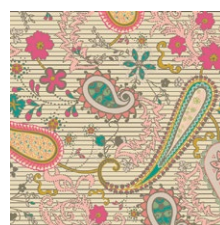
ALWAYS HERE



NUC-21980  
FLOWERS EVERYWHERE  
CARESS



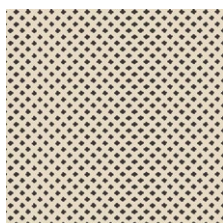
NUC-21981  
PRETTY EYES SWEET



NUC-21982  
PAISLEYS FOREVER ROSA



NUC-21984  
THE RIGHT PATH



NUC-21986  
GOODNESS THOUGHTS



NUC-21987  
ALWAYS DO GOOD AMOR



NUC-21988  
BUENOS AIRES PAMPA



NUC-21990  
LET'S SEW SOMETHING

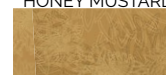


FEEL THE DIFFERENCE © 2019 Courtesy of Art Gallery Quilts LLC. All Rights Reserved.

FE-539  
ESMERALDA



FE-513  
HONEY MUSTARD



PE-486  
VANILLA CUSTARD



# Wanderlust

FINISHED SIZE | 15" x 36"

## FABRIC REQUIREMENTS

Fabric A	NUC-11982	¼ yd.
Fabric B	FE-539	⅛ yd.
Fabric C	NUC-11985	½ yd.
Fabric D	FE-513	¼ yd.
Fabric E	NUC-11987	⅛ yd.
Fabric F	PE-486	¼ yd.

### BACKING FABRIC

NUC-11985 1 yd. (suggested)

## CUTTING DIRECTIONS

¼" seam allowances are included.  
WOF means width of fabric.

- Nine (9) 3½" x 6½" rectangles from Fabrics A, E
- Six (6) 3½" x 6½" rectangles from Fabrics B, D
- Forty (40) 3¾" x 3½" squares from Fabric C
- Twenty (20) 3½" x 3¾" squares from Fabric F

## CONSTRUCTION

Sew all rights sides together with ¼" seam allowance.  
HST means Half Square Triangles.

- Start with the Flying Geese construction by (1) 6½" x 3½" rectangle from Fabric A
- and (2) 3½" x 3½" squares from Fabric C as in the Diagram below:



DIAGRAM 1

- Repeat the same Flying Geese instructions for the following Fabrics:

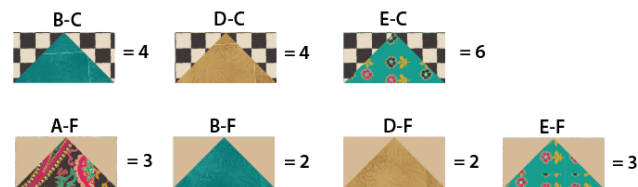


DIAGRAM 2

- Now pair two rows with Fabric A-C and B-C

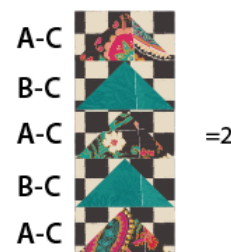


DIAGRAM 3

- Pair two rows with Fabric A-E and D-C.
- Notice that the fabric print from Fabric E will face down

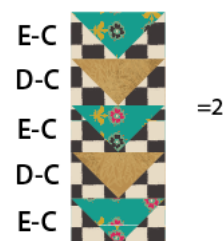


DIAGRAM 4

- Pair one row with Fabric A-F and B-F



DIAGRAM 5

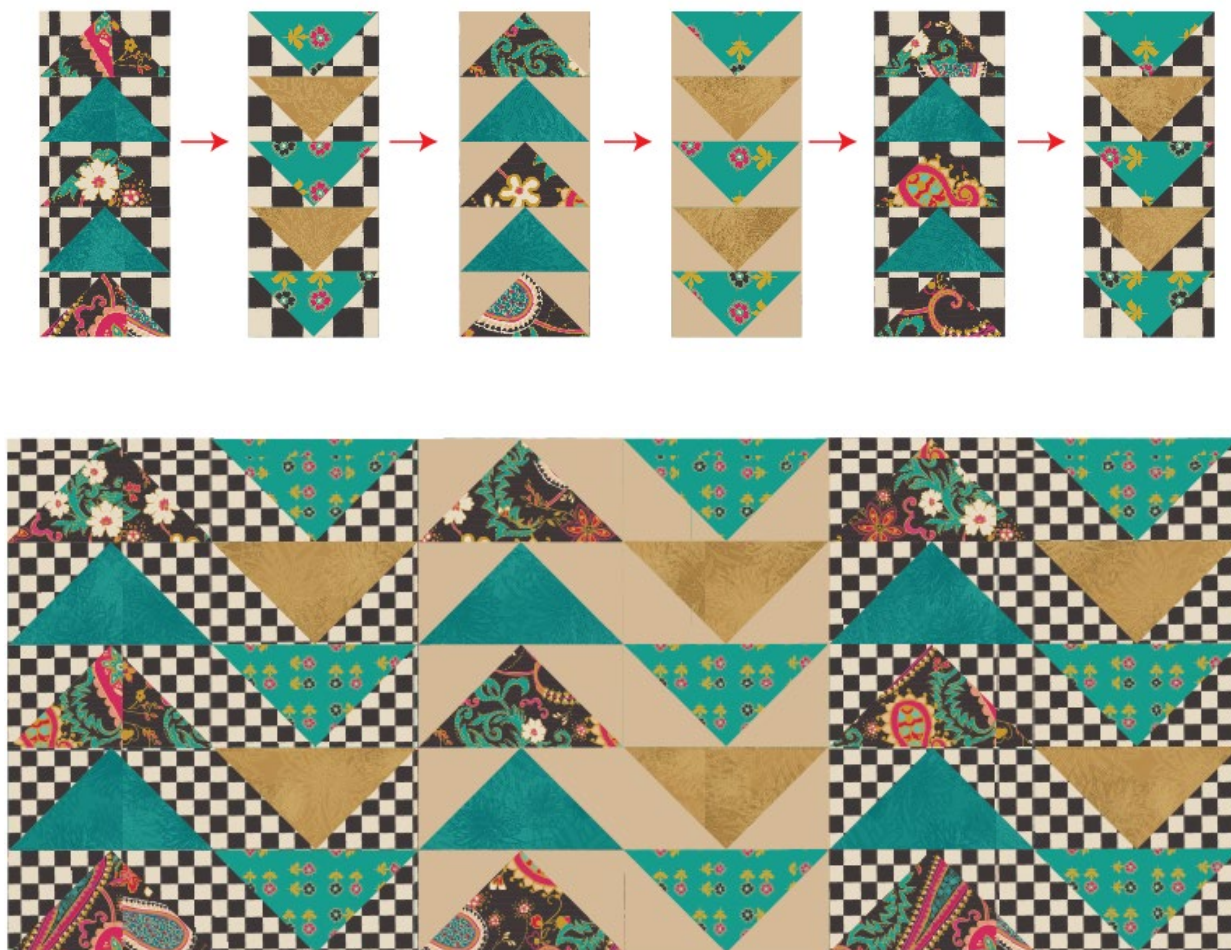


- Pair one row with Fabric D-F and E-F



DIAGRAM 6

- Now, pair each row as in the diagram below



## CREATING THE BACK PILLOW

*Sew all rights sides together with ¼" seam allowance.  
Press open.*

- To make a envelope back for your pillow take both 32" x 15½" rectangles and fold one 32" side on each rectangle in 1/2" and press and then fold another 1/2" and press.
- Top stitch as close to the edge as possible.
- Place rectangles right side together on top of each other to the front of your pillow and stitch all the way around your pillow at ¼" seam allowance.
- Clip corners at seam allowance and flip piece to the right side of the fabric.
- Fill pillow with a 36" x 15" pillow form and enjoy!



[artgalleryfabrics.com](http://artgalleryfabrics.com)

NOTE: While all possible care has been taken to ensure the accuracy of this pattern, We are not responsible for printing errors or the way in which individual work varies. Please read instructions carefully before starting the construction of this quilt. If desired, wash and iron your fabrics before starting to cut.

© 2019 Courtesy of Art Gallery Quilts LLC. All Rights Reserved.