



## Triangles Block







# Quilt BLOCK collection

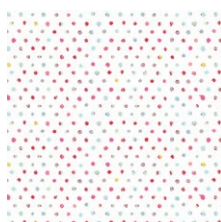
## Floralish

FABRICS DESIGNED BY KATARINA ROCCELLA

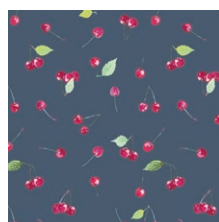
CHILLED BREEZE



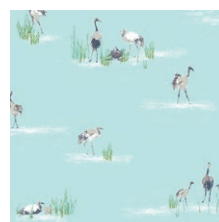
FSH-17400  
CASCADING BLOSSOMS



FSH-17402  
SEED OF ROSES



FSH-17403  
CHERRY PICKING



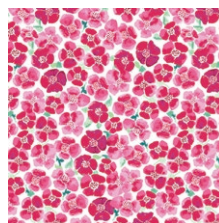
FSH-17405  
WONDERING CRANES



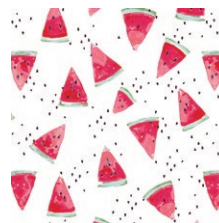
FSH-17407  
CITRUS LIMON



FSH-17408  
PETUNIA GARDEN TREILLAGE



FSH-17410  
BLOOMS FIELD FRESH

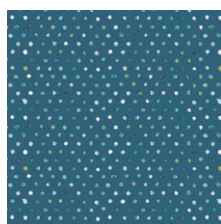


FSH-17411  
WATERISH MELON

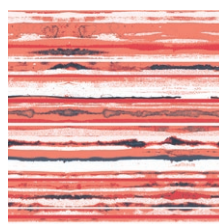
WARM WIND



FSH-27401  
POPPY REFLECTIONS



FSH-27402  
SEED OF IRIS



FSH-27404  
SUNSET TRAILS



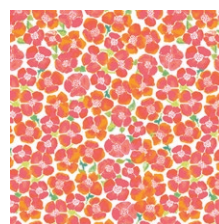
FSH-27406  
DANCING FORTUNELLA



FSH-27407  
CITRUS TANGERINA



FSH-27409  
EVERGREEN CAMELLIA



FSH-27410  
BLOOMS FIELD LUMINOUS



FSH-27412  
LATTICEWORK VERDANT



FEEL THE DIFFERENCE © 2019 Courtesy of Art Gallery Quilts LLC. All Rights Reserved.



PE-473  
FLAMINGO

FINISHED SIZE | 12" x 12"

## FABRIC REQUIREMENTS

Fabric **A** FSH-17411  
Fabric **B** FSH-27407  
Fabric **C** FSH-27412  
Fabric **D** FSH-27402  
Fabric **E** PE-473

## CUTTING INSTRUCTIONS

*1/4" seam allowances are included.*

- One (1) 4 1/2" square from Fabric **A**
- One (1) 5 1/4" square from Fabric **B** and **C**
- Four (4) 2 7/8" squares from Fabric **D** and **E**
- One (1) 7" square from Fabric **B** and **D**

## CONSTRUCTION

*Sew all rights sides together with 1/4" seam allowance.*

- To make four Half Square Triangles, take a 7" square from Fabric **B** and **D**. Place them right sides together. Sew around your entire block at 1/4".

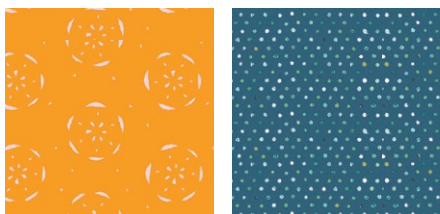


DIAGRAM 1.1

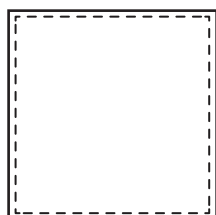


DIAGRAM 1.2

- Cut on both diagonals from corner to corner to reveal four HST's. Trim your HST's to 4 1/2" .

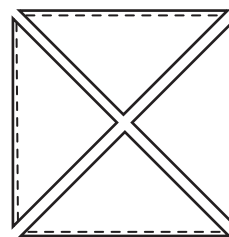


DIAGRAM 1.3

- To create all the flying geese for your block draw diagonal lines from corner to corner on the wrong side of all your 2 7/8" squares from Fabric **D** and **E**.
- Take a 5 1/4" square from Fabric **B** and **C** and place two 2 7/8" squares at each corner of your 5 1/4" squares.
- Make sure right sides are together and the diagonal line match up to make a straight line.
- Sew 1/4" from the diagonal line on each side of the line.

Draw Diagonal Line

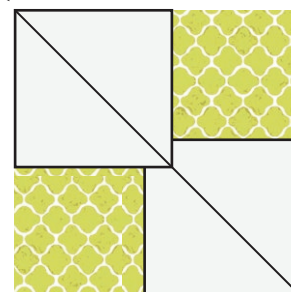
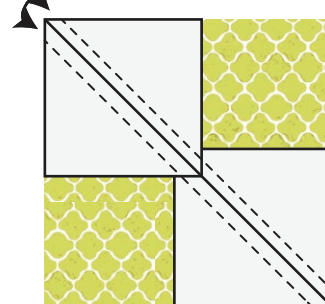


DIAGRAM 2.1

Sew Here



Cut Here

DIAGRAM 2.2

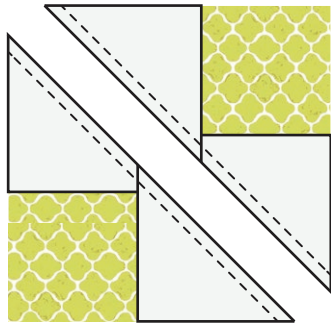


DIAGRAM 2.3

- Cut pieces on the diagonal line you marked.
- Press your pieces open and place your remaining 2 7/8" squares at the lower corner of your pieces. Sew on each side of the diagonal line you marked at 1/4".
- Cut piece on diagonal line to reveal your flying geese and press and square them up to 2 1/2" x 4 1/2" strips.



DIAGRAM 3.1

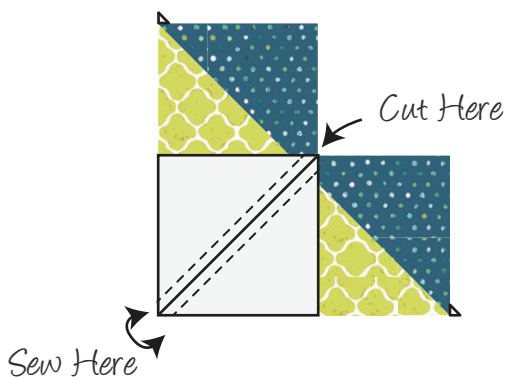


DIAGRAM 3.2

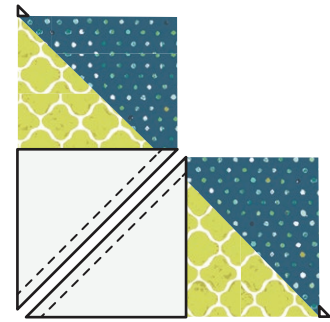


DIAGRAM 3.3

- Pair your Fabric C/D geese to your B/E geese and sew together making four of these units.

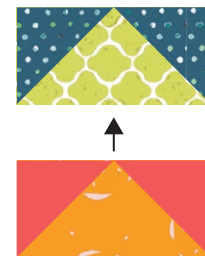


DIAGRAM 4

- Now you have all the units to create your block.
- Arrange your units out following the block design and sew your units into rows.
- Sew your rows together matching up seams and your Triangles Quilt Block is complete.

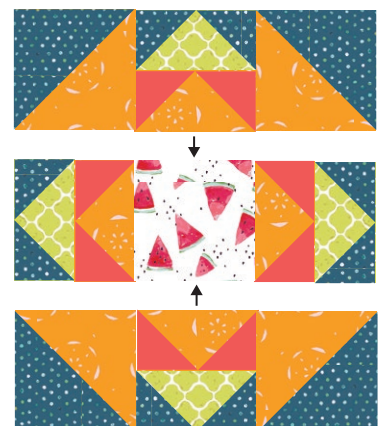


DIAGRAM 5





DIAGRAM 6

XXXXXXXXXXXXXXXXXXXXXXXXXXXXXXXXXXXX

*Congratulations*  
*& enjoy*

XXXXXXXXXXXXXXXXXXXXXXXXXXXXXXXXXXXX



[artgalleryfabrics.com](http://artgalleryfabrics.com)

NOTE: While all possible care has been taken to ensure the accuracy of this pattern, We are not responsible for printing errors or the way in which individual work varies. Please read instructions carefully before starting the construction of this quilt. If desired, wash and iron your fabrics before starting to cut.

© 2019 Courtesy of Art Gallery Quilts LLC. All Rights Reserved.