

Pastice pills



Lattice pillow



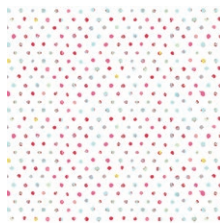
Floralish

FABRICS DESIGNED BY KATARINA ROCCELLA

CHILLED BREEZE



FSH-17400
CASCADING BLOSSOMS



FSH-17402
SEED OF ROSES



FSH-17403
CHERRY PICKING



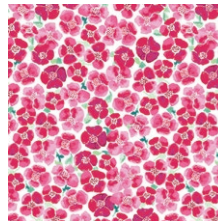
FSH-17405
WONDERING CRANES



FSH-17407
CITRUS LIMON



FSH-17408
PETUNIA GARDEN TREILLAGE



FSH-17410
BLOOMS FIELD FRESH

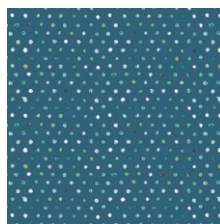


FSH-17411
WATERISH MELON

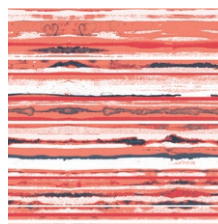
WARM WIND



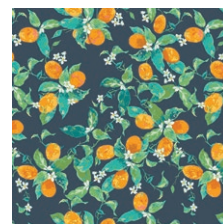
FSH-27401
POPPY REFLECTIONS



FSH-27402
SEED OF IRIS



FSH-27404
SUNSET TRAILS



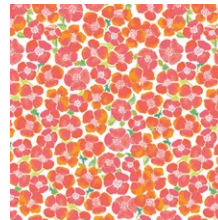
FSH-27406
DANCING FORTUNELLA



FSH-27407
CITRUS TANGERINA



FSH-27409
EVERGREEN CAMELLIA



FSH-27410
BLOOMS FIELD LUMINOUS



FSH-27412
LATTICEWORK VERDANT





FINISHED SIZE | 18" x 18"

FABRIC REQUIREMENTS

Fabric **A** FSH-27410 $\frac{5}{8}$ yd.
Fabric **B** DEN-S-2002 $\frac{5}{8}$ yd.

BACKING FABRIC
DEN-S-2002 Fabric **B** (Included)

CUTTING INSTRUCTIONS

$\frac{1}{4}$ " seam allowances are included.
WOF means width of fabric.

- One (1) $18\frac{1}{2}$ " square from fabric **A**.
- One (1) $18\frac{1}{2}$ " square from fabric **B**.
- Two (2) 12 " x $18\frac{1}{2}$ " rectangles from fabric **B**.

CONSTRUCTION

Sew all rights sides together with $\frac{1}{4}$ " seam allowance.

- Take one $18\frac{1}{2}$ " square from fabrics **A** and **B**.
- Lay the $18\frac{1}{2}$ " square from fabric **A** right side of fabric facing up, place the $18\frac{1}{2}$ " square from fabric **B** on top of the fabric **A** square.
- Align both squares.

XXXXXXXXXXXXXXXXXXXXXXXXXXXX



DIAGRAM 1

- Now bring the template and you can either align it to the fabric squares and sew on top of the paper or make an extra cut and use it as a template ruler to trace it.
- Add a piece of batting and start stitching following the lines.



DIAGRAM 2

- Start cutting the shapes making sure to just cut fabric **B** layer to release fabric **A** print.



DIAGRAM 3

CREATING THE PILLOW BACK

Sew rights sides together

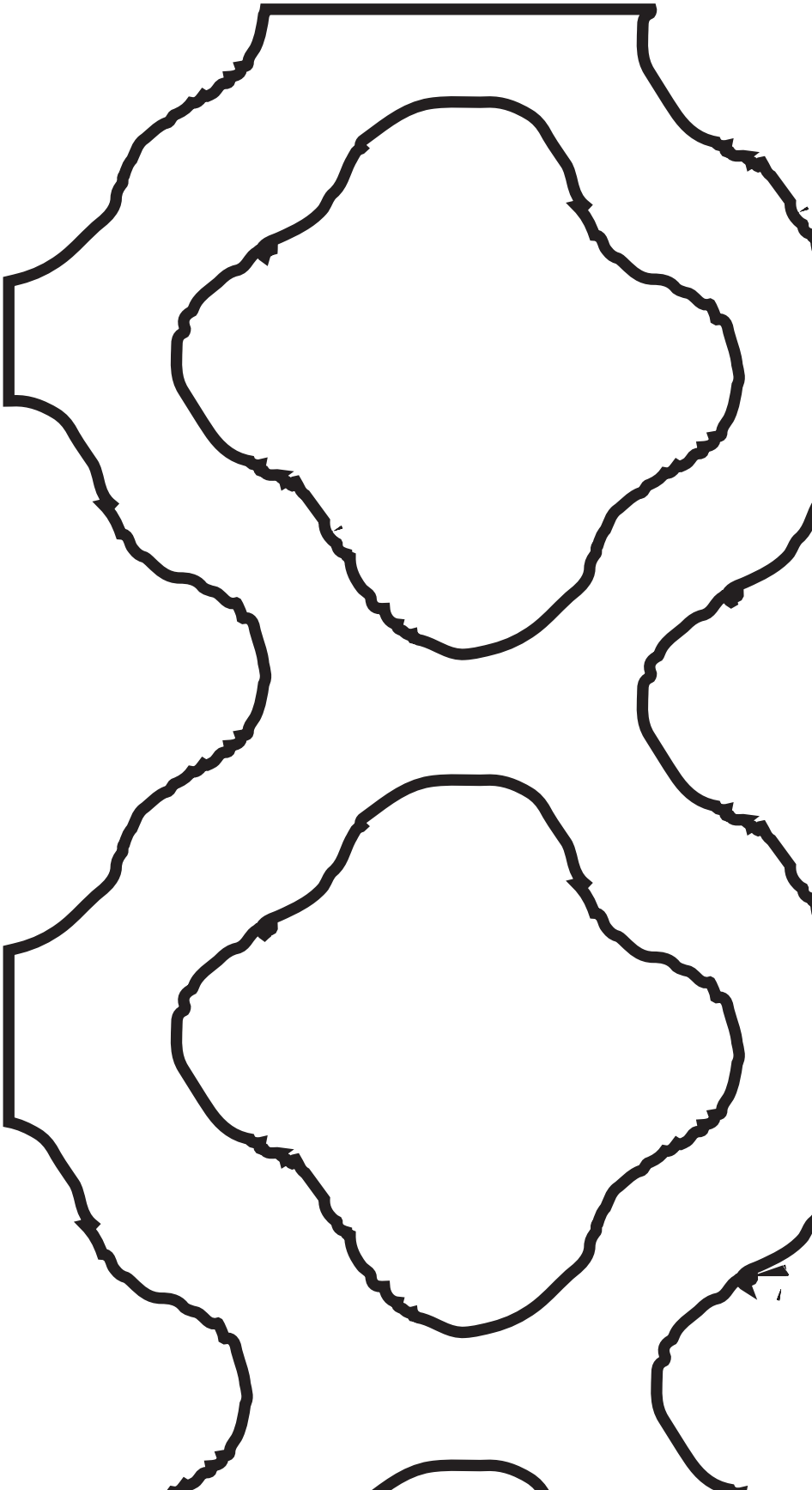
- To make a envelope back for your pillow take both 12" x 18½" rectangles from fabric **B** and fold one 18½" side on each rectangle in 1/2" and press and then fold another 1/2" and press.
- Top stitch as close to the edge as possible.
- Place rectangles right side together on top of each other to the front of your pillow and stitch all the way around your pillow at ¼" seam allowance.
- Clip corners at seam allowance and flip piece to the right side of the fabric.
- Fill pillow with a 18" x 18" pillow form and enjoy!



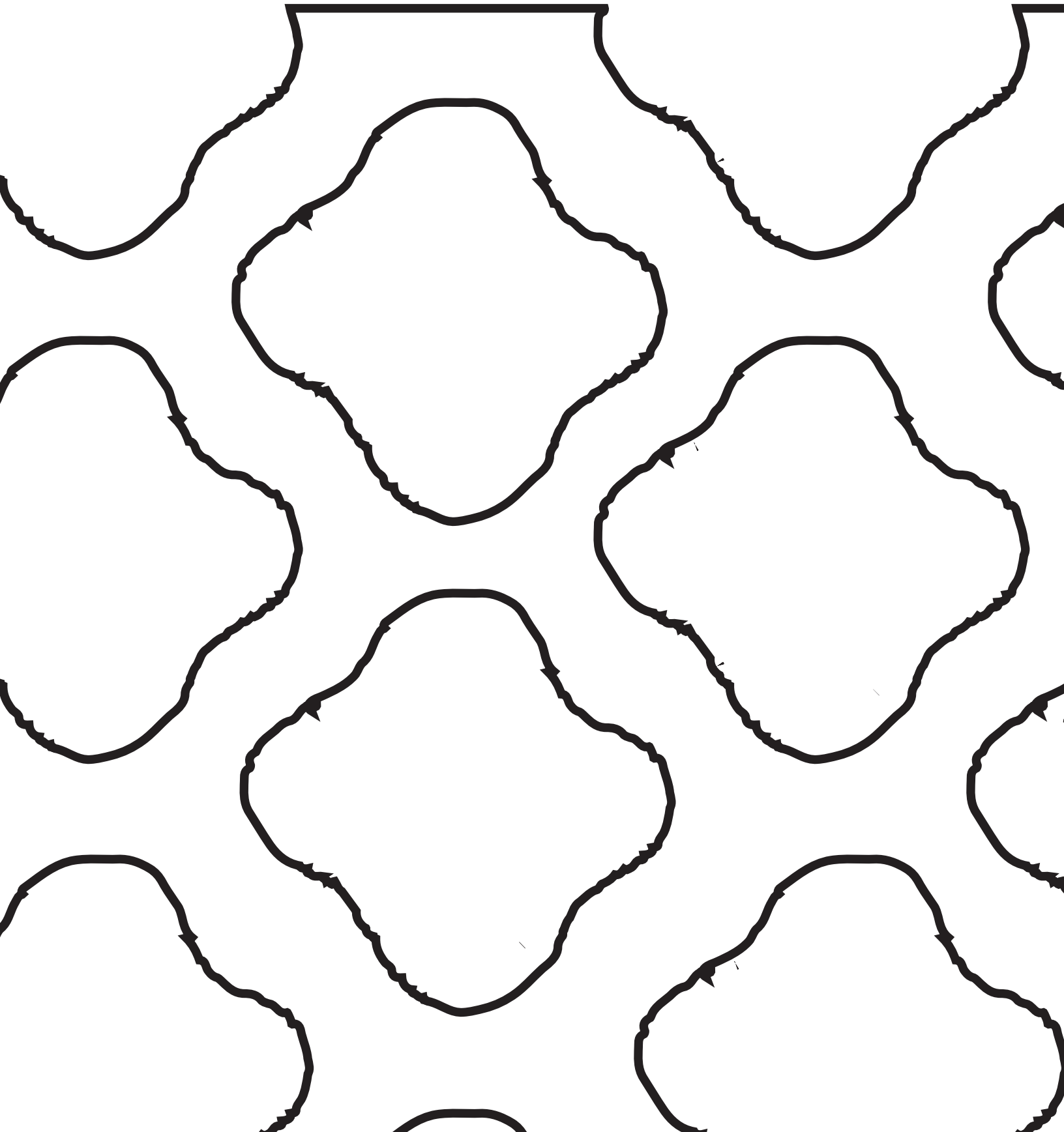
artgalleryfabrics.com

NOTE: While all possible care has been taken to ensure the accuracy of this pattern, We are not responsible for printing errors or the way in which individual work varies. Please read instructions carefully before starting the construction of this quilt. If desired, wash and iron your fabrics before starting to cut.

© 2019 Courtesy of Art Gallery Quilts LLC. All Rights Reserved.

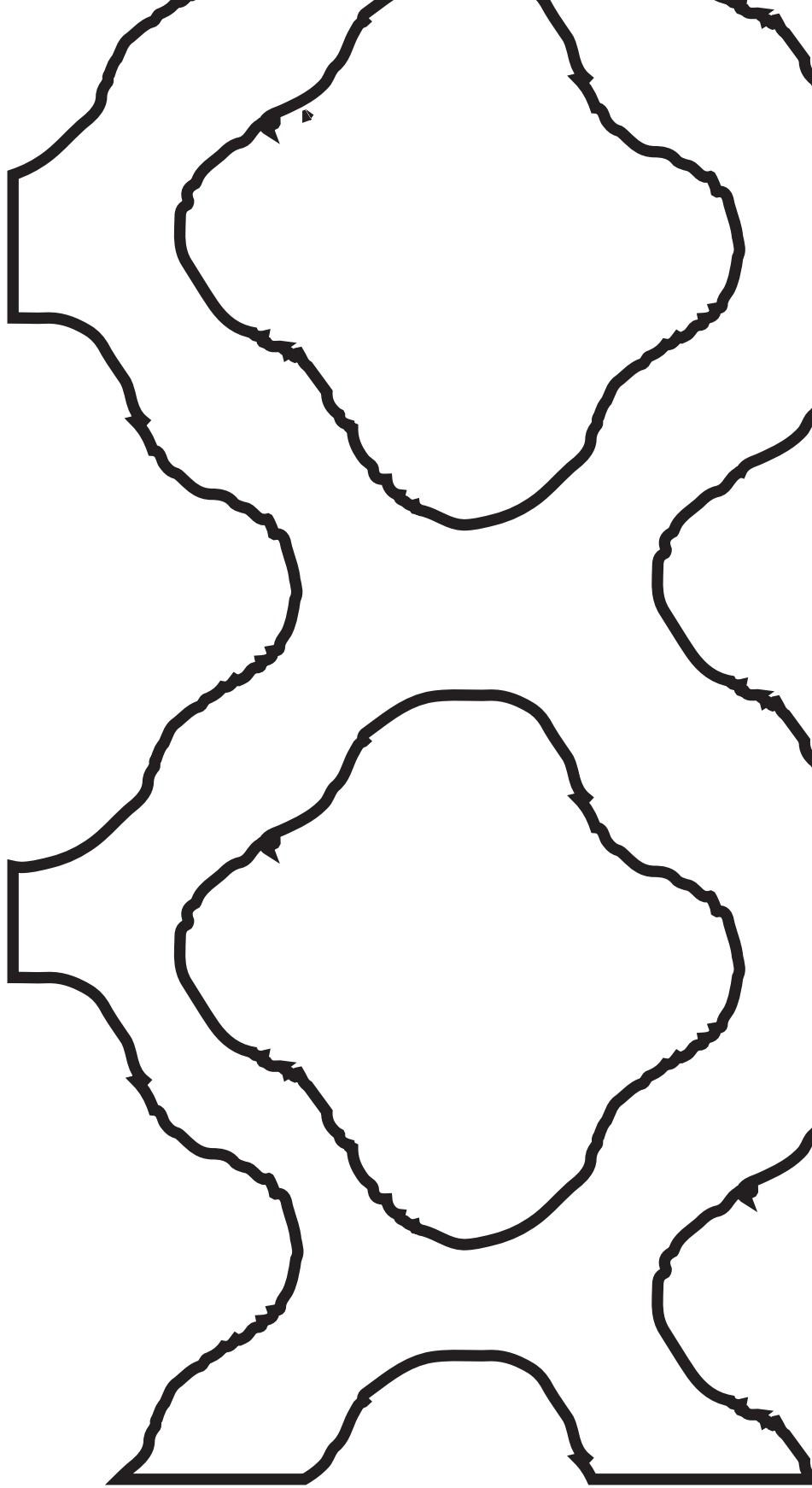


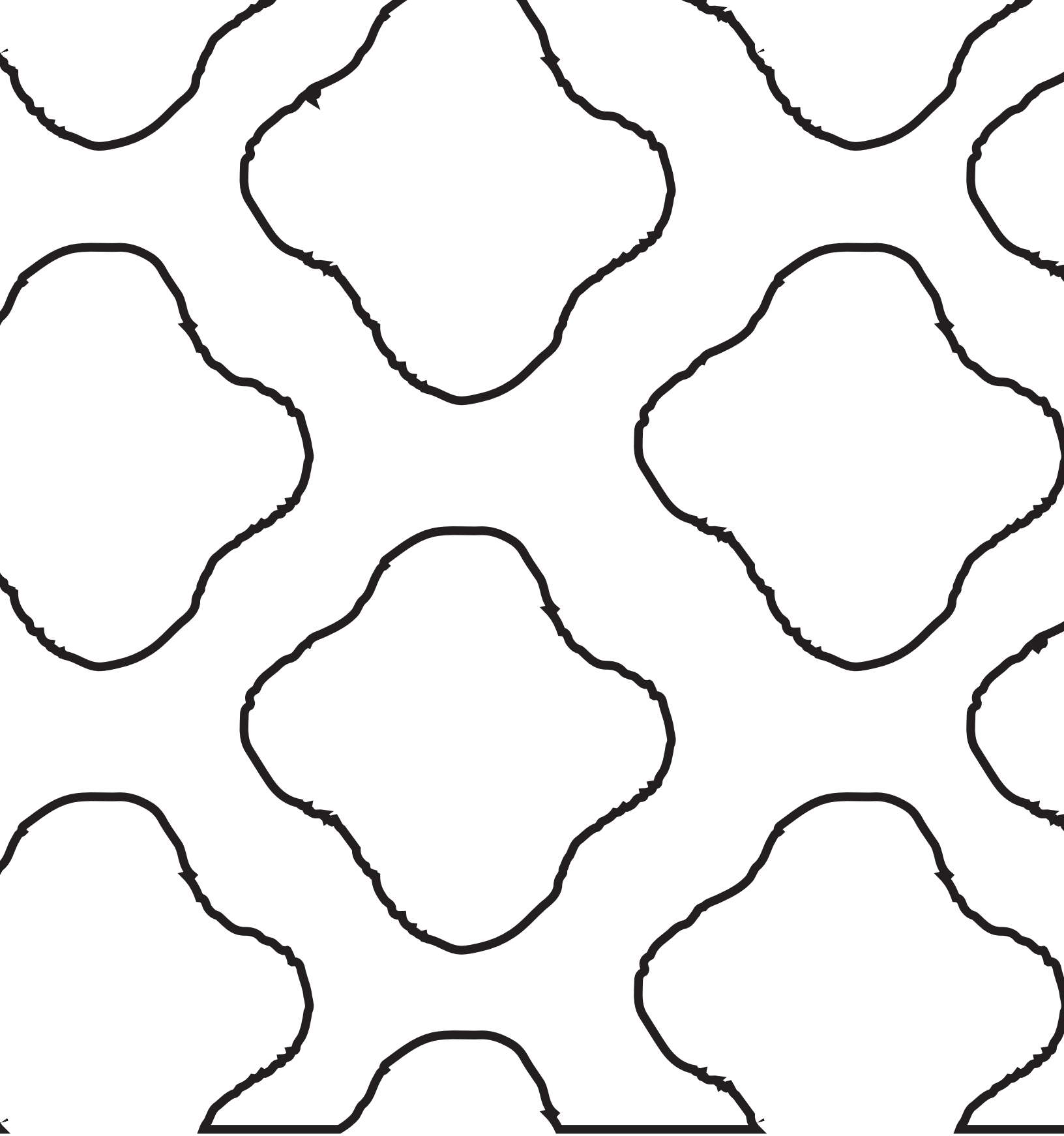
2.



3.









6.