

Piaf

THE FAIRY PILLOW



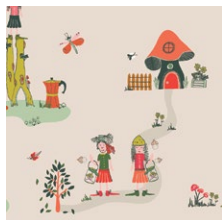
Piaf

THE FAIRY PILLOW



Dew + Moss

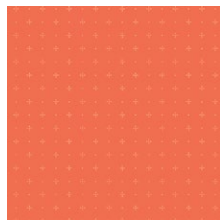
FABRICS DESIGNED BY ALEXANDRA BORDALLO



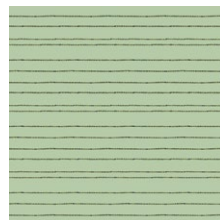
DWM-45600
THE MEADOW FELLOWS



DWM-45606
MOSS'S SNAIL MAIL



DWM-45603
STARRY ORANGE YOU



DWM-45601
DEW'S CLOTH-LINE



FEEL THE DIFFERENCE © 2021 Courtesy of Art Gallery Quilts LLC. All Rights Reserved.



DEN-S-2003
AFTERNOON SAIL

Piaf THE FAIRY PILLOW

FINISHED SIZE | 14" x 9"

FABRIC REQUIREMENTS

Fabric A	DWM-45600	¼ yd.
Fabric B	DWM-45606	F8
Fabric C	DWM-45603	F8
Fabric D	DWM-45601	⅛ yd.
Fabric E	DEN-S-2006	F8
Fabric F	DEN-S-2003	⅛ yd.

CUTTING DIRECTIONS

Fabric **A**

- Cut one rectangles of 14½" x 9½" .
- Cut two rectangles of 9" x 9½"

Fabric **B**

- Cut two squares of 6½" on point.

Fabric **C**

- Cut two squares of 3½".

Fabric **D**

- Cut one (1) Template.

Fabric **E**

- Cut two squares of 5".

Fabric **F**

- Cut One (1) rectangle of 4" x 3½".

Cutting on Point

- Make a 6½" square on a paper and use it as a template.
- Position the square on point as it shows on Diagram below and cut the squares, You should have two squares of 6½" from fabric **B**.

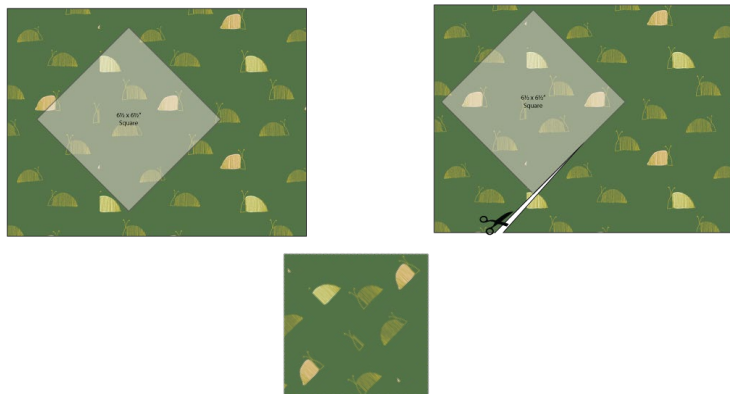


DIAGRAM 1

CONSTRUCTION

Sew all rights sides together with ¼"seam allowance.

- Take two (2) 6½" squares from fabric **B** and place them on the top corners of the 14½" x 9½" rectangle from fabric **A**.
- Sew them in a diagonal way and trim excess fabric See Diagram 2 for reference.

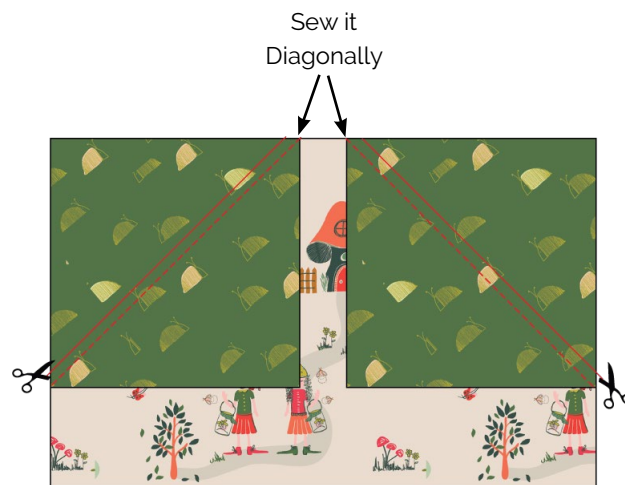


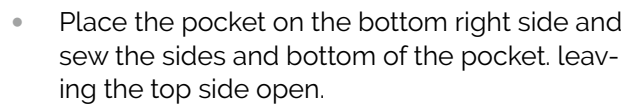
DIAGRAM 2

- Take two (2) 5" squares from fabric **E** and continue placing them on the top corners, sew them diagonally and trim excess fabric

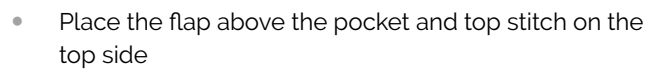


DIAGRAM 3

- XX




- DIAGRAM 7



- DIAGRAM 8

Top open

Top



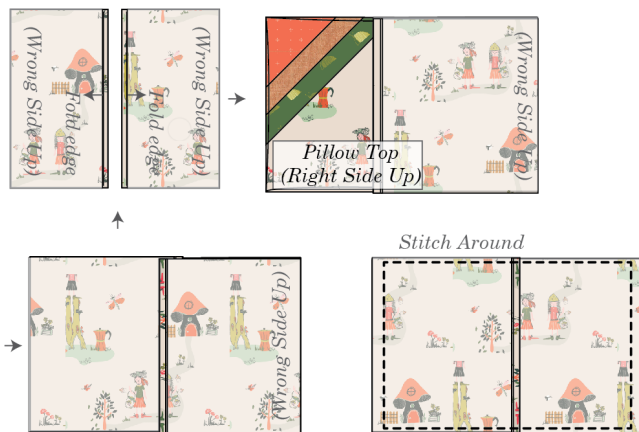
Top Fold

DIAGRAM 6

CREATING THE BACK PILLOW

Sew all rights sides together with ¼" seam allowance. Press open.

- Take both 9" x 9½" rectangles from fabric **A**.
- Fold one bottom edge ½" towards the wrong side of the fabric of one of the rectangle.
- Fold the same edge ½" again and edge stitch the fold in place to have a clean edge.
- Repeat the same for the top edge of the bottom piece.
- Take the quilted pillow top and lay it flat right side up.
- Take one rectangle from fabric **A** and align it wrong side up to the right side of the pillow top.
- Take the other rectangle from fabric **A** and align it wrong side up to the left side of the pillow top.
- Pin the three pieces in place and sew around the edges at ¼".
- Clip the corners and flip the piece to the right side of the fabric.
- Fill the pillow with a 14" x 9" pillow form and enjoy!




Congratulations
& enjoy

XX



Please read instructions carefully before starting the construction of this quilt. If desired, wash and iron your fabrics before starting to cut.

artgalleryfabrics.com



Template 1