

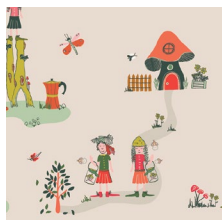


# MOVE SLOWLY

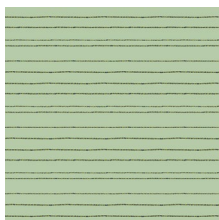
DESIGNED BY AGF STUDIO

## Dew + Moss

FABRICS DESIGNED BY ALEXANDRA BORDALLO



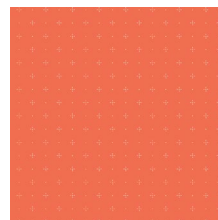
DWM-45600  
THE MEADOW FELLOWS



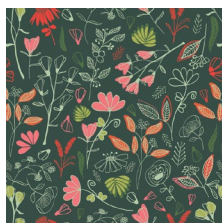
DWM-45601  
DEW'S CLOTH-LINE



DWM-45602  
JARS O' BUGS



DWM-45603  
STARRY ORANGE YOU



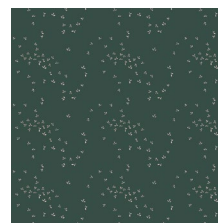
DWM-45604  
GLOWLY BOSQUE



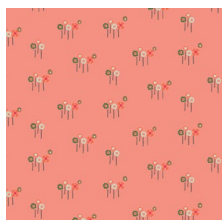
DWM-45605  
PLAYFUL MINI BUNTING



FSH-17410  
MOSS'S SNAIL MAIL



DWM-45607  
FLY NIGHT SKY



DWM-45608  
DAISY BUTTON BUDS



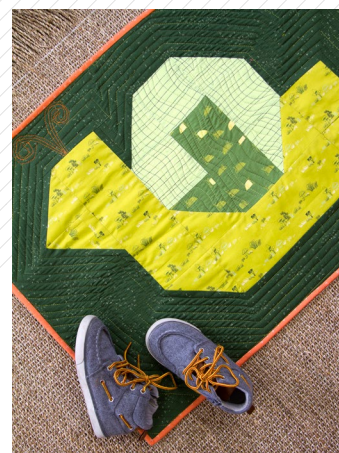
DWM-45609  
PHYSIOGNOMIES



DWM-45610  
GNOMES' MUSHROOM HOMES



DWM-45611  
BUGGY & POSY



FEEL THE DIFFERENCE © 2019 Courtesy of Art Gallery Quilts LLC. All Rights Reserved.

# MOVE SLOWLY

FINISHED SIZE | 30" x 22½"

## FABRIC REQUIREMENTS

Fabric **A** DWM-45601 Fat 8.  
 Fabric **B** DWM-45606 Fat 8.  
 Fabric **C** DWM-45607 ½ yd.  
 Fabric **D** DWM-45610 Fat ¼.  
 Fabric **E** DWM-45603 Fat ⅙.

### BACKING FABRIC

DEN-T-3000 ¾ yds. *(Suggested)*

### BINDING FABRIC

Fabric **E** *(Included)*

## CUTTING DIRECTIONS

- Three (3) 4¼" squares from fabric **A**.
- Two (2) 4⅝" squares from fabric **A**.
- Two (2) 4¼" squares from fabric **B**.
- One (1) 4⅝" squares from fabric **B**.
- One (1) 19¼" x 4¼" strip from fabric **C**.
- Two (2) 23" x 4¼" strips from fabric **C**.
- One (1) 26¾" x 4¼" strip from fabric **C**.
- Three (3) 4⅝" squares from fabric **C**.
- Two (2) 8" x 4¼" rectangles from fabric **C**.
- One (1) 4¼" square from fabric **D**.
- Three (3) 4⅝" squares from fabric **D**.
- Two (2) 11¾" x 4¼" strips from fabric **D**.

## CONSTRUCTION

*Sew all rights sides together with ¼" seam allowance.*

- Start sewing the HST combinations needed for the rug.
- Make four **CD** HST, two **CA** HST, one **BD** HST and one **AD** HST.
- Press seams open.
- Set aside.

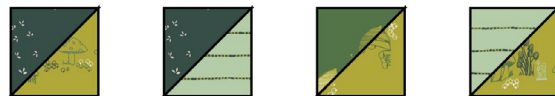


DIAGRAM 1

- Take two **CA** HST, three 4¼" squares from fabric **A**, two 4¼" squares from fabric **B** and one **AD** and **BD**.
- Attach the squares as shown in the diagram below.

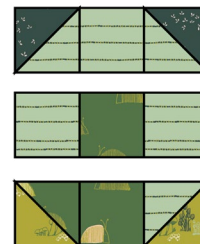


DIAGRAM 2

- Take one **CD** HST and two 11¾" x 4¼" strips from fabric **D**.
- Attach one 11¾" x 4¼" strip to the left side of the previous made block.
- Then attach the **CD** HST to the other 11¾" x 4¼" strips from fabric **D**.

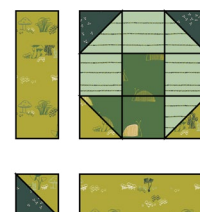


DIAGRAM 3

- Attach the **CD** HST with the fabric **D** strip to the bottom corner of the snail rug piece.
- Set aside.

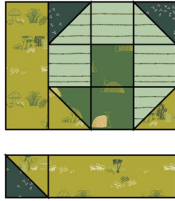


DIAGRAM 4

- Take three **CD** HST, one  $4\frac{1}{4}$ " square from fabric **D** and two  $8" \times 4\frac{1}{4}"$  rectangles from fabric **C**.
- Make the snail face and back strips following this combinations.
- For the snail face attach two **CD** HST and one  $8" \times 4\frac{1}{4}"$  rectangles from fabric **C**.
- Refer to the left side strip from the diagram below for fabric placement.
- For the snail back attach one  $8" \times 4\frac{1}{4}"$  rectangles from fabric **C**, one  $4\frac{1}{4}"$  square from fabric **D** and one **CD** HST.
- Refer to the right side strip from the diagram below for fabric placement.



DIAGRAM 5

- Attach the snail head strip to the left side of the snail body.
- Attach the snail back strip to the right side of the snail body.



DIAGRAM 6

- For the top of the rug take one  $23" \times 4\frac{1}{4}"$  strip from fabric **C**.
- Attach it to the top edge.
- Press seams open.

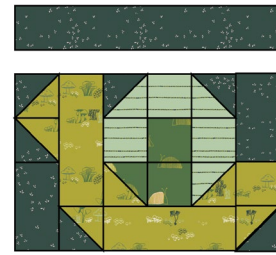


DIAGRAM 7

- For the right side of the rug take one  $19\frac{1}{4}" \times 4\frac{1}{4}"$  strip from fabric **C**.
- Attach it to the right edge.
- Press seams open.

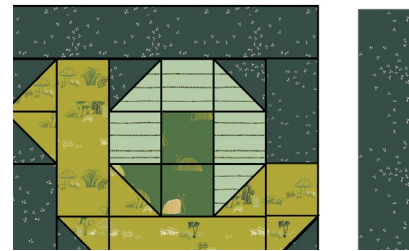


DIAGRAM 8

- For the bottom side of the rug take one  $26\frac{3}{4}" \times 4\frac{1}{4}"$  strip from fabric **C**.
- Attach it to the bottom edge.
- Press seams open.

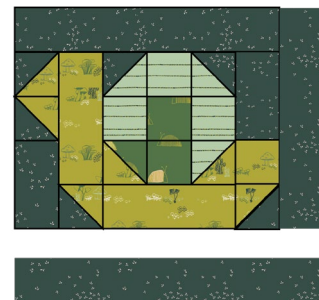


DIAGRAM 9

- For the left side of the rug take one 26¾" x 4¼" strip from fabric **C**.
- Attach it to the left side edge.
- Press seams open.

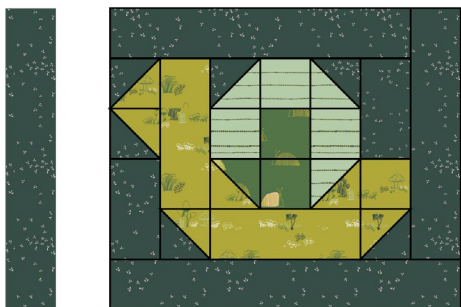


DIAGRAM 10

## QUILT ASSEMBLY

### *Sew rights sides together*

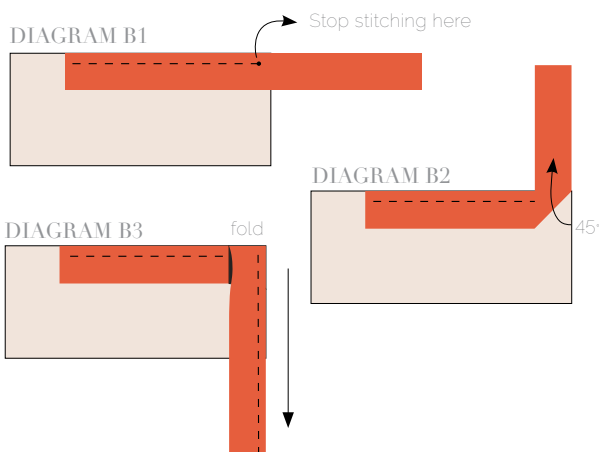
- Place BACKING FABRIC on a large surface wrong side up. Stretch it with masking tape against that surface.
- Place BATTING on top of backing fabric.
- Place TOP on top of the batting with right side facing up. Smooth away wrinkles using your hands.
- Pin all layers together and baste with basting thread, using long stitches. You can also use safety pins to join the layers.
- Machine or hand quilt starting at the center and working towards the corners. Remember that quilting motifs are a matter of personal preference. Have fun choosing yours!
- After you finished, trim excess of any fabric or batting, squaring the quilt to proceed to bind it.

## BINDING

### *Sew rights sides together.*

- Cut enough strips 1½" wide by the width of the fabric **E** to make a final strip 115" long. Start sewing the binding strip in the middle of one of the sides of the quilt, placing the strip right side down and leaving an approximated 5" tail. Sew with ¼" seam allowance (using straight stitch), aligning the strip's raw edge with the quilt top's raw edge.

- Stop stitching ¼" before the edge of the quilt (**DIAGRAM B1**). Clip the threads. Remove the quilt from under the machine presser foot. Fold the strip in a motion of 45° and upward, pressing with your fingers (**DIAGRAM B2**). Hold this fold with your finger, bring the strip down in line with the next edge, making a horizontal fold that aligns with the top edge of the quilt (**DIAGRAM B3**). Start sewing at ¼" of the border, stitching all the layers. Do the same in the four corners of the quilt.
- Stop stitching before you reach the last 5 or 6 inches. Cut the threads and remove the quilt from under the machine presser foot. Lay the loose ends of the binding flat along the quilt edge, folding the ends back on themselves where they meet. Press them together to form a crease. Using this crease as the stitching line, sew the two open ends of the binding with right sides together (you can help yourself marking with a pencil if the crease is difficult to see).
- Trim seam to ¼" and press open. Complete the sewing. Turn binding to back of the quilt, turn raw edge inside and stitch by hand using blind stitch.



XXXXXXXXXXXXXXXXXXXXXXXXXXXX

*Congratulations*  
*& enjoy*

XXXXXXXXXXXXXXXXXXXXXXXXXXXX



[artgalleryfabrics.com](http://artgalleryfabrics.com)

NOTE: While all possible care has been taken to ensure the accuracy of this pattern, We are not responsible for printing errors or the way in which individual work varies. Please read instructions carefully before starting the construction of this quilt. If desired, wash and iron your fabrics before starting to cut.

© 2019 Courtesy of Art Gallery Quilts LLC. All Rights Reserved.