

X
X
X
X
X
X
X
X
X
X
X
X

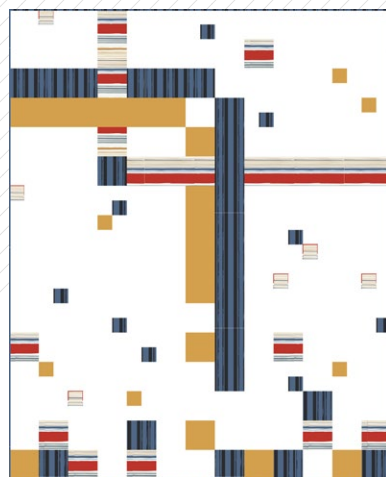
X
X
X
X
X
X
X
X
X
X
X
X



× × × × × × × × × × × × × × × × × × × ×

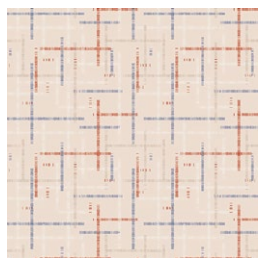
MONDRIATION

QUILT DESIGNED BY AGF STUDIO *AGFstudio*



ALIGNED

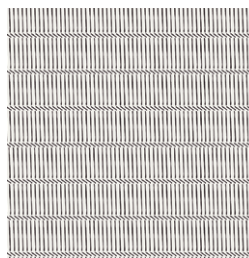
FABRICS DESIGNED BY AGF STUDIO



CAP-A-7000
INTERCONNECTED



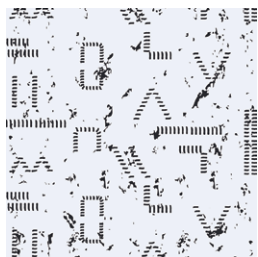
CAP-A-7001
SLANTED



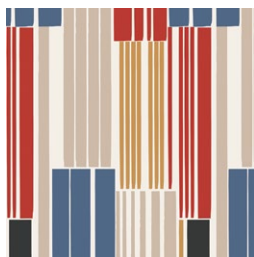
CAP-A-7002
HYPHENATED



CAP-A-7003
LINEUP



CAP-A-7004
DIVIDED



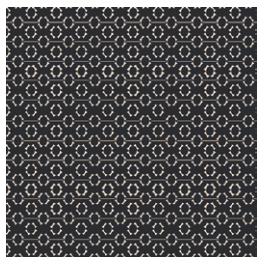
CAP-A-7005
ON LINES



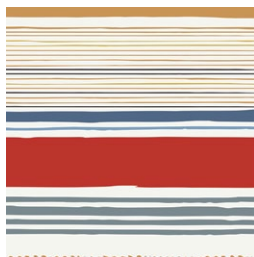
CAP-A-7006
PARALLEL



CAP-A-7007
LINKED



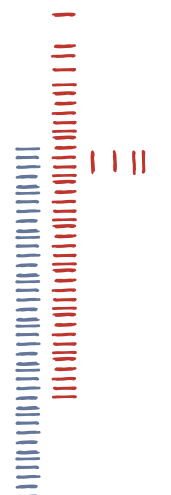
CAP-A-7008
DASH-ING



CAP-A-7009
LINE STUDY



FEEL THE DIFFERENCE © 2017 Courtesy of Art Gallery Quilts LLC. All Rights Reserved.



MONDRIATION

FINISHED SIZE | 65" x 80"

FABRIC REQUIREMENTS

Fabric A	PE-421	½ yd.
Fabric B	CAP-A-7009	¾ yd.
Fabric C	CAP-A-7006	¾ yd.
Fabric D	PE-433	2 ¾ yd.

BACKING FABRIC

CAP-A-7000 4 yds. *(Suggested)*

BINDING FABRIC

CAP-A-7006 (Fabric **C**) *(included)*

CUTTING DIRECTIONS

¼" seam allowances are included.
WOF means width of fabric.

Fabric **A**-

Cut ten (10) 5 ½" x 5 ½" squares
Cut one (1) 5 ½" x 30 ½" rectangle
Cut six (6) 3" x 3" squares

Fabric **B**-

Cut twelve (12) 5 ½" x 5 ½" squares
Cut one (1) 5 ½" x 15 ½" rectangle
Cut one (1) 5 ½" x 25 ½" rectangle
Cut six (6) 3" x 3" squares

Fabric **C**-

Cut one (1) 5 ½" x 50 ½" rectangle (piece together)
Cut seven (7) 5 ½" x 5 ½" squares
Cut two (2) 5 ½" x 15 ½" rectangles
Cut nine (9) 3" x 3" squares

Fabric **D**-

Cut nineteen (19) 5 ½" x 5 ½" squares
Cut twelve (12) 5 ½" x 10 ½" rectangles
Cut eleven (11) 5 ½" x 15 ½" rectangles
Cut five (5) 5 ½" x 20 ½" rectangles
Cut three (3) 5 ½" x 25 ½" rectangles
Cut two (2) 5 ½" x 30 ½" rectangles
Cut twenty-one (21) 3" x 3" squares
Cut twenty-one (21) 3" x 5 ½" rectangles

CONSTRUCTION

Sew all rights sides together with ¼" seam allowance.

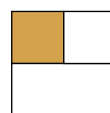
Block Construction

- First, construct your blocks. Sew two 3" blocks together, one in Fabric D and the other in fabric A, B or C. Then sew those two blocks to a 3" x 5½" strip of Fabric D.



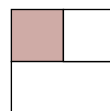
DIAGRAM 1

**Finished
Measurements**



Block A: Make 6

Use in rows 3, 4, 8, 13 (twice) & 14



Block B: Make 6

Use in rows 1, 7, 9, 10 (twice) & 14



Block C: Make 9

Use in rows 1, 4, 7, 8, 10, 11 (twice), 12, 13

- Now, start assembling and sewing together the quilt rows as follows. Refer to the assembly diagram for block orientation.

Row 1:

Fabric D 5 ½" square > Block B > Fabric D 5 ½" square > Fabric B 5 ½" square > Fabric D 5 ½" x 10 ½" rec. > Block C > Fabric D 5 ½" x 30 ½" rec.

Row 2:

Fabric D 5 ½" x 15 ½" rec. > Fabric B 5 ½" square > Fabric D 5 ½" x 20 ½" rec. > Fabric B 5 ½" square > Fabric D 5 ½" x 20 ½" rec.

Row 3:

Fabric C 5 ½" x 15 ½" rec. > Fabric B 5 ½" square > Fabric C 5 ½" x 15 ½" rec. > Fabric D 5 ½" x 20 ½" rec. > Block A > Fabric D 5 ½" square

Sew together Rows 1 > 2 > 3 to complete the top portion of the Quilt Top. Alternate starting points when sewing to prevent skewing of the top. Set aside top portion.

Construct the Left and Right sides of Rows 4- 13 separately.

Row 4, Left Side:

Fabric A 5 ½" x 30 ½" rec. > Fabric D 5 ½" square

Row 5, Left Side:

Fabric D 5 ½" x 15 ½" rec. > Fabric B 5 ½" square > Fabric D 5 ½" x 10 ½" rec. > Fabric A 5 ½" square

Row 6, Left Side:

Fabric D 5 ½" x 15 ½" rec. > Fabric C 5 ½" square > Fabric B 5 ½" x 15 ½" rec.

Row 7, Left Side:

Block B > Fabric D 5 ½" x 10 ½" rec. > Block C > Fabric D 5 ½" x 10 ½" rec. > Fabric A 5 ½" square

Row 8, Left Side:

Fabric D 5 ½" x 15 ½" rec. > Block A > Fabric D 5 ½" x 10 ½" rec. > Fabric A 5 ½" square

Row 9, Left Side:

Fabric D 5 ½" x 30 ½" rec. > Fabric A 5 ½" square

Row 10, Left Side:

Fabric D 5 ½" square > Block C > Fabric D 5 ½" x 20 ½" rec. > Fabric A 5 ½" square

Row 11, Left Side:

Fabric D 5 ½" x 15 ½" rec. > Block C > Fabric D 5 ½" x 15 ½" rec.

Row 12, Left Side:

Fabric B 5 ½" square > Fabric D 5 ½" x 15 ½" rec. > Block C > Fabric D 5 ½" square > Fabric A 5 ½" square

Row 13, Left Side:

Fabric D 5 ½" square > Block A > Fabric D 5 ½" x 25 ½" rec.

Sew together Left Side Rows 4-13 to complete the Left Middle portion of the Quilt Top. Alternate starting points when sewing, press and set aside Left Middle portion.

Center Column: Piece together 5 ½" strips from Fabric C to make a center column that is 50 ½" tall. When piecing together the strips try to match the stripes so it looks like one piece of fabric. Set aside.

Row 4, Right Side:

Block C > Fabric A 5 ½" x 15 ½" rec. > Block A

Row 5, Right Side:

Fabric D 5 ½" x 25 ½" rec.

Row 6, Right Side:

Fabric B 5 ½" x 25 ½" rec.

Row 7, Right Side:

Fabric D 5 ½" x 25 ½" rec.

Row 8, Right Side:

Fabric D 5 ½" square > Block C > Fabric D 5 ½" x 15 ½" rec.

Row 9, Right Side:

Fabric D 5 ½" x 10 ½" rec. > Block B > Fabric D 5 ½" x 10 ½" rec.

Row 10, Right Side:

Fabric D 5 ½" square > Block B > Fabric D 5 ½" x 10 ½" rec. > Block B

Row 11, Right Side:

Fabric D 5 ½" x 20 ½" rec. > Block C

Row 12, Right Side:

Fabric D 5 ½" square > Fabric B 5 ½" square > Fabric D 5 ½" x 15 ½" rec.

Row 13, Right Side:

Fabric D 5 ½" square > Block C > Fabric D 5 ½" square > Block A > Fabric D 5 ½" square

Sew together Right Side Rows 4-13 and set aside.

Row 14:

Fabric D 5 ½" x 10 ½" rec. > Block B > Fabric D 5 ½" square > Block A > Fabric D 5 ½" x 25 ½" rec. > Fabric C 5 ½" square > Fabric D 5 ½" x 10 ½" rec.

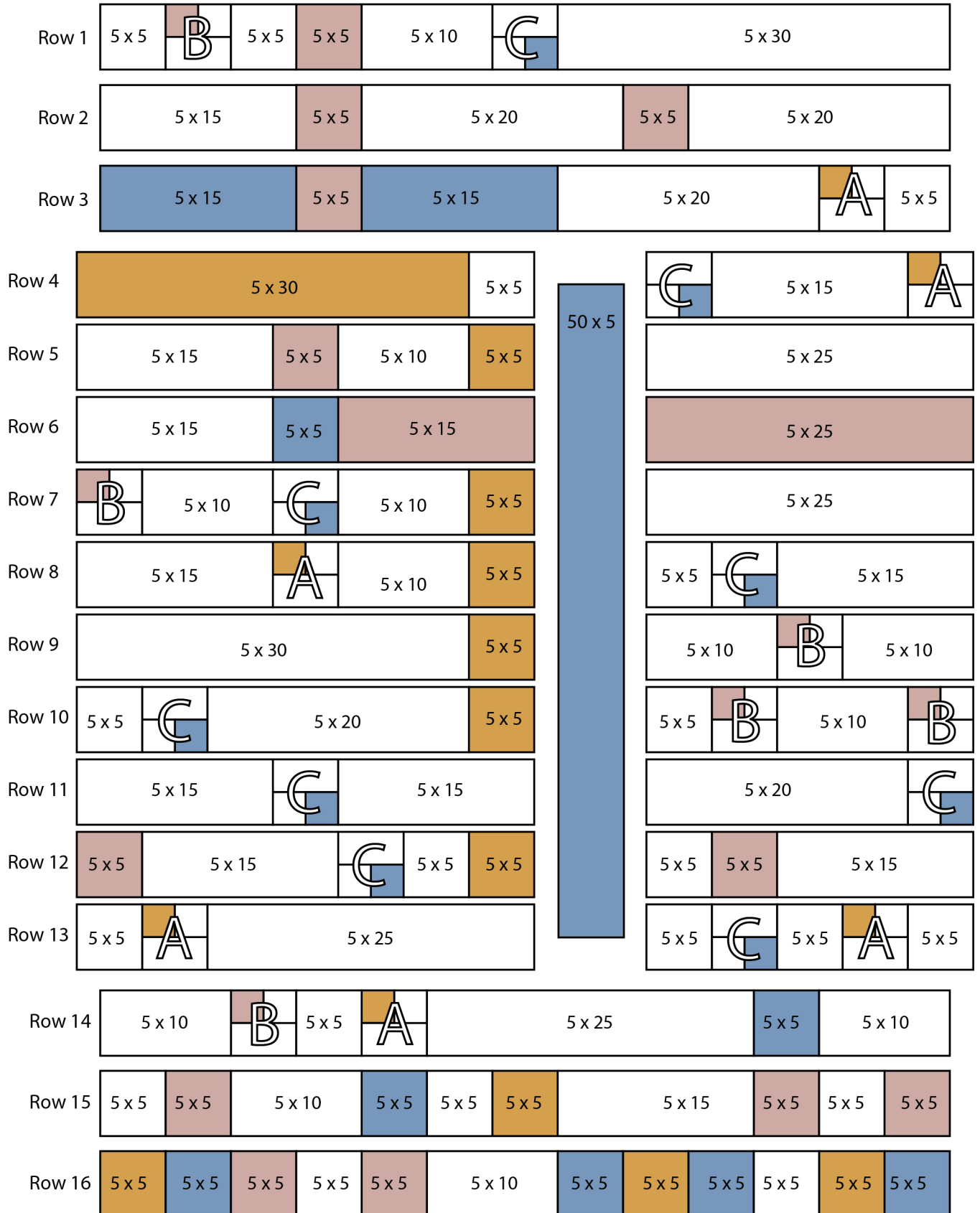
Row 15:

Fabric D 5 ½" square > Fabric B 5 ½" square > Fabric D 5 ½" x 10 ½" rec. > Fabric C 5 ½" square > Fabric D 5 ½" square > Fabric A 5 ½" square > Fabric D 5 ½" x 15 ½" rec. > Fabric B 5 ½" square > Fabric D 5 ½" square > Fabric B 5 ½" square

Row 16:

Fabric A 5 ½" square > Fabric C 5 ½" square > Fabric B 5 ½" square > Fabric D 5 ½" square > Fabric B 5 ½" square > Fabric D 5 ½" x 10 ½" rec. > Fabric C 5 ½" square > Fabric A 5 ½" square > Fabric C 5 ½" square > Fabric D 5 ½" square > Fabric A 5 ½" square > Fabric C 5 ½" square

Quilt Assembly Diagram (showing Finished Measurements)



Fabric A
 Fabric C
 Fabric B
 Fabric D

ASSEMBLING THE TOP

- Sew together Rows 14 > 15 > 16 to complete the bottom portion of the Quilt Top. Alternate starting points when sewing to prevent skewing of the top.
- To complete the Quilt Top first sew together the Middle Portion by sewing the Left Side > center column > Right Side. Then Sew the Top Portion > Middle Portion > Bottom Portion.

QUILT ASSEMBLY

Sew rights sides together.

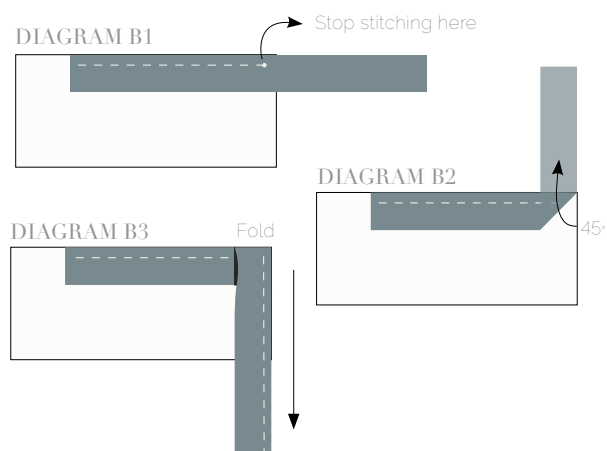
- Place BACKING FABRIC on a large surface wrong side up. Stretch it with masking tape against that surface.
- Place BATTING on top of backing fabric.
- Place TOP on top of the batting with right side facing up. Smooth away wrinkles using your hands.
- Pin all layers together and baste with basting thread, using long stitches. You can also use safety pins to join the layers.
- Machine or hand quilt starting at the center and working towards the corners. Remember that quilting motifs are a matter of personal preference. Have fun choosing yours!
- After you finished, trim excess of any fabric or batting, squaring the quilt to proceed to bind it.

BINDING

Sew rights sides together.

- Cut enough strips $1\frac{1}{2}$ ' wide by the width of the fabric **C** to make a final strip 300' long. Start sewing the binding strip in the middle of one of the sides of the quilt, placing the strip right side down and leaving an approximated 5' tail. Sew with $\frac{1}{4}$ ' seam allowance (using straight stitch), aligning the strip's raw edge with the quilt top's raw edge.
- Stop stitching $\frac{1}{4}$ ' before the edge of the quilt (**DIAGRAM B 1**). Clip the threads. Remove the quilt from under the machine presser foot. Fold the strip in a motion of 45° and upward, pressing with your fingers (**DIAGRAM B2**). Hold this fold with your finger, bring the strip down in line with the next edge, making a horizontal fold that aligns with the top edge of the quilt (**DIAGRAM B3**). Start sewing at $\frac{1}{4}$ ' of the border, stitching all the layers. Do the same in the four corners of the quilt.

- XXXXXXXXXXXXXXXXXXXXXXXXXXXXXXXXXXXX
- Stop stitching before you reach the last 5 or 6 inches. Cut the threads and remove the quilt from under the machine presser foot. Lay the loose ends of the binding flat along the quilt edge, folding the ends back on themselves where they meet. Press them together to form a crease. Using this crease as the stitching line, sew the two open ends of the binding with right sides together (you can help yourself marking with a pencil if the crease is difficult to see).
 - Trim seam to $\frac{1}{4}$ ' and press open. Complete the sewing. Turn binding to back of the quilt, turn raw edge inside and stitch by hand using blind stitch.



artgalleryfabrics.com

NOTE: While all possible care has been taken to ensure the accuracy of this pattern, We are not responsible for printing errors or the way in which individual work varies. Please read instructions carefully before starting the construction of this quilt. If desired, wash and iron your fabrics before starting to cut.

© 2017 Courtesy of Art Gallery Quilts LLC. All Rights Reserved.