

X
X
X
X
X
X
X
X
X
X
X
X

This image displays a highly detailed and colorful quilt square. The central focus is a large, intricate geometric pattern that resembles a stylized star or a complex snowflake. This pattern is constructed from a variety of small fabric pieces, including triangles, squares, and diamonds, in a rich palette of colors: bright pink, sunny yellow, teal, solid black, and white with various patterns like polka dots and checkers. The central design is set against a dark gray background. The quilt is framed by a wide, dark gray border. In each of the four corners, there are decorative triangular patches made of pink, yellow, and patterned fabric, adding to the overall complexity and visual appeal of the piece.

XXXXXXXXXXXXXXXXXXXXXXXXXXXX





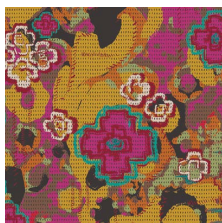
QUILT DESIGNED BY AGF STUDIO



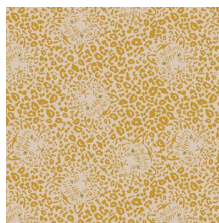
FABRICS DESIGNED BY PAT BRAVO



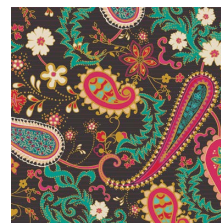
ALWAYS WITH ME



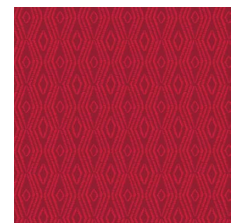
NUC-11980
FLOWERS EVERYWHERE
INTENTION



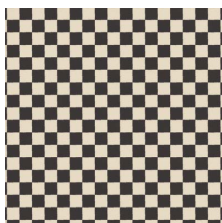
NUC-11981
PRETTY EYES TWINKLY



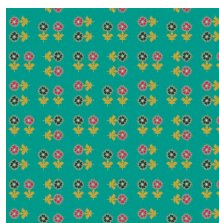
NUC-11982
PAISLEYS FOREVER
BOHEME



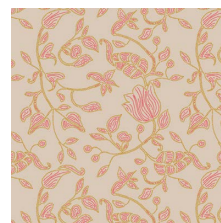
NUC-11983
JUST MORE RED



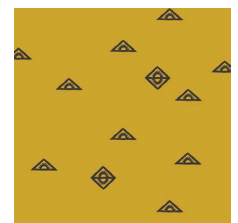
NUC-11985
DANCE THIS TANGO



NUC-11987
ALWAYS DO GOOD CIELO



NUC-11988
BUENOS AIRES SUD

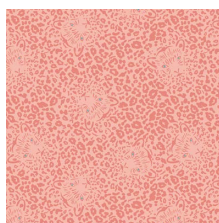


NUC-11989
FAITH

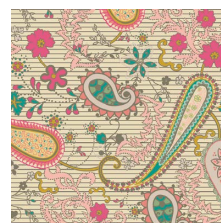
ALWAYS HERE



NUC-21980
FLOWERS EVERYWHERE
CARESS



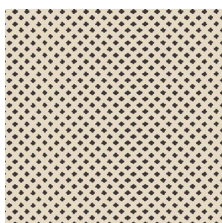
NUC-21981
PRETTY EYES SWEET



NUC-21982
PAISLEYS FOREVER ROSA



NUC-21984
THE RIGHT PATH



NUC-21986
GOODNESS THOUGHTS



NUC-21987
ALWAYS DO GOOD AMOR



NUC-21988
BUENOS AIRES PAMPA



NUC-21990
LET'S SEW SOMETHING



FEEL THE DIFFERENCE © 2019 Courtesy of Art Gallery Quilts LLC. All Rights Reserved.



FINISHED SIZE | 88" x 88"

FABRIC REQUIREMENTS

Fabric A	NUC-11980	1 yd.
Fabric B	NUC-11982	1 $\frac{3}{8}$ yd.
Fabric C	NUC-11983	$\frac{1}{3}$ yd.
Fabric D	NUC-11984	$\frac{5}{8}$ yd.
Fabric E	NUC-11989	1 $\frac{1}{8}$ yd.
Fabric F	NUC-21986	$\frac{7}{8}$ yd.
Fabric G	NUC-21988	1 $\frac{1}{8}$ yd.
Fabric H	PE-405	$\frac{7}{8}$ yd.
Fabric I	PE-429	$\frac{7}{8}$ yd.
Fabric J	DEN-S-2002	2 $\frac{1}{8}$ yd.

BACKING FABRIC
NUC-11981 6 $\frac{1}{2}$ yds. (*Suggested*)

BINDING FABRIC
NUC-11980 (Fabric **A**) (*Included*)

CUTTING DIRECTIONS

$\frac{1}{4}$ " seam allowances are included.
WOF means width of fabric.

- Five (5) 9 $\frac{3}{4}$ " x 9 $\frac{3}{4}$ " squares from fabrics **A** and **D**.
- Eighteen (18) 9 $\frac{3}{4}$ " x 9 $\frac{3}{4}$ " squares from fabric **B**.
- Two (2) 9 $\frac{3}{4}$ " x 9 $\frac{3}{4}$ " squares from fabric **C**.
- Thirteen (13) 9 $\frac{3}{4}$ " x 9 $\frac{3}{4}$ " squares from fabric **E**.
- Nine (9) 9 $\frac{3}{4}$ " x 9 $\frac{3}{4}$ " squares from fabrics **F**, **G**, and **I**.
- Twelve (12) 9 $\frac{3}{4}$ " x 9 $\frac{3}{4}$ " squares from fabric **H**.
- Sixteen (16) 4 $\frac{1}{2}$ " x 4 $\frac{1}{2}$ " squares from fabric **G**.
- Eight (8) 9 $\frac{3}{4}$ " x 9 $\frac{3}{4}$ " squares from fabric **J**.

- Four (4) 32 $\frac{1}{2}$ " x 4 $\frac{1}{2}$ " rectangles from fabric **J**.
- Four (4) 28 $\frac{1}{2}$ " x 4 $\frac{1}{2}$ " rectangles from fabric **J**.
- Four (4) 20 $\frac{1}{2}$ " x 4 $\frac{1}{2}$ " rectangles from fabric **J**.
- Four (4) 16 $\frac{1}{2}$ " x 4 $\frac{1}{2}$ " rectangles from fabric **J**.
- Twelve (12) 12 $\frac{1}{2}$ " x 4 $\frac{1}{2}$ " rectangles from fabric **J**.
- Twelve (12) 8 $\frac{1}{2}$ " x 4 $\frac{1}{2}$ " rectangles from fabric **J**.
- Four (4) 4 $\frac{1}{2}$ " x 4 $\frac{1}{2}$ " squares from fabric **J**.

CONSTRUCTION

Sew all rights sides together with $\frac{1}{4}$ " seam allowance.

Eight at a time HST (Half Square Triangle)

- Pair the 9 $\frac{3}{4}$ " x 9 $\frac{3}{4}$ " squares following Diagram 2 to make eight (8) HST out of each one:
- Align the squares face to face.
- Draw a diagonal line on the back of the fabric.
- Stitch at $\frac{1}{4}$ " from each side of the draw line.
- Cut on the red lines following the diagram.
- Open and press.

Eight at a time HST

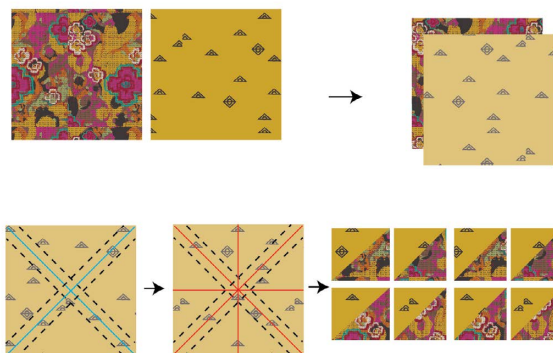


DIAGRAM 1

	9 3/4"	9 3/4"	4 1/2"	
2 (AE)				x 16 Block a
1 (AD)				x 4 Block b
1 (AG)				x 4 Block c
1 (AI)				x 8 Block d
1 (BC)				x 4 Block e
2 (BD)				x 16 Block f
2 (BE)				x 12 Block g
4 (BF)				x 32 Block h
2 (BG)				x 12 Block i
2 (BI)				x 16 Block j
3 (BJ)				x 20 Block k
1 (CI)				x 4 Block l
1 (GD)				x 4 Block m
1 (ID)				x 8 Block n
2 (EG)				x 12 Block o
4 (EH)				x 32 Block p
2 (EI)				x 16 Block q
1 (EJ)				x 8 Block r
1 (FG)				x 8 Block s
1 (FH)				x 8 Block t
1 (FI)				x 4 Block u
2 (FJ)				x 12 Block v
2 (GH)				x 8 Block w
1 (HI)				x 8 Block x
2 (HJ)				x 16 Block y
2 (HB)				x 16 Block z

- Arrange the blocks, squares and rectangles into eleven (11) rows to make four (4) block x:

Row 1:

- z, z, y, one (1) 32½" x 4½" rectangle from fabric J.

Row 2:

- z, z, k, one (1) 28½" x 4½" rectangle from fabric J, v.

Row 3:

- k, y, one (1) 20½" x 4½" rectangle from fabric J, y, r, l, h.

Row 4:

- one (1) 16½" x 4½" rectangle from fabric J, v, k, o, p, p, t, h.

Row 5:

- one (1) 12½" x 4½" rectangle from fabric J, k, h, h, t, p, p, o, j.

Row 6:

- one (1) 12½" x 4½" rectangle from fabric J, v, h, h, i, q, x, 4½" square from fabric G, d.

Row 7:

- one (1) 12½" x 4½" rectangle from fabric J, w, g, s, 4½" square from fabric G, n, j, o, a.

Row 8:

- one (1) 8½" x 4½" rectangle from fabric J, r, p, p, x, j, f, f, b, a.

Row 9:

- one (1) 8½" x 4½" rectangle from fabric J, y, p, p, q, n, f, f, i, q.

Row 10:

- one (1) 8½" x 4½" rectangle from fabric J, s, g, w, one (1) 4½" x 4½" square from fabric G, c, g, m, one (1) 4½" x 4½" square from fabric G, l

Row 11:

- one (1) 4½" x 4½" square from fabric J, k, h, h, u, q, a, a, j, j, e

DIAGRAM 2

ASSEMBLING THE TOP

Sew all rights sides together with 1/4" seam allowance. Press open.

- Join the four (4) block x making sure fabric C is placed in the center of the quilt.

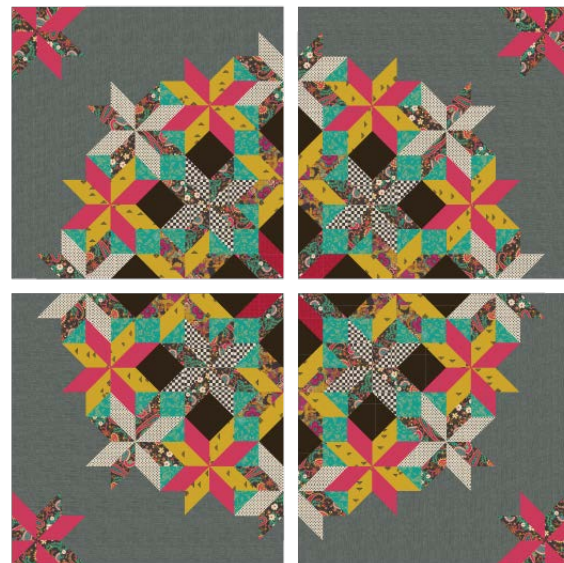


DIAGRAM 5

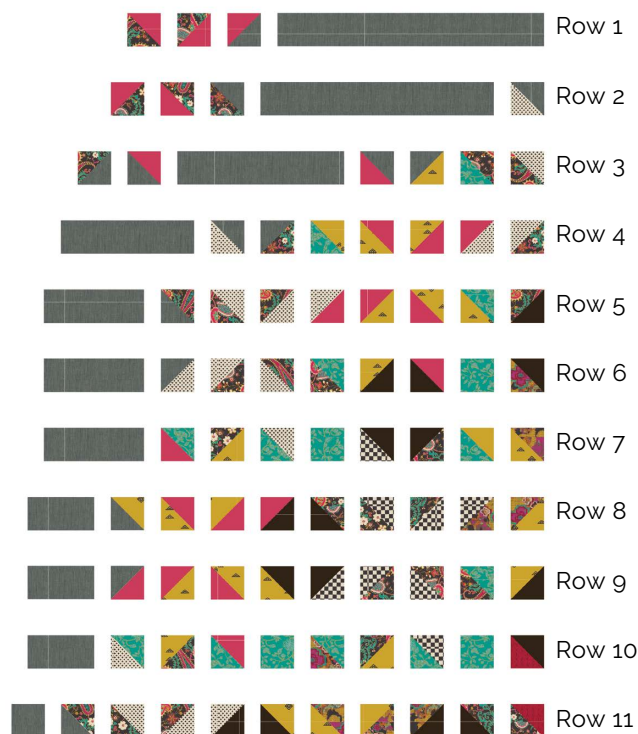


DIAGRAM 3

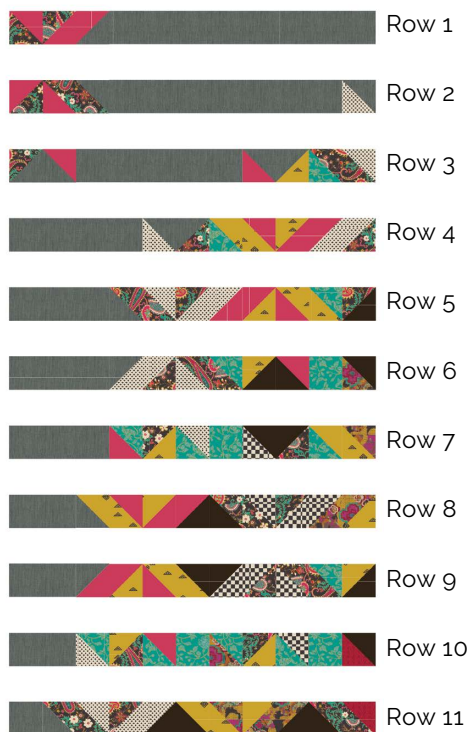


DIAGRAM 4

QUILT ASSEMBLY

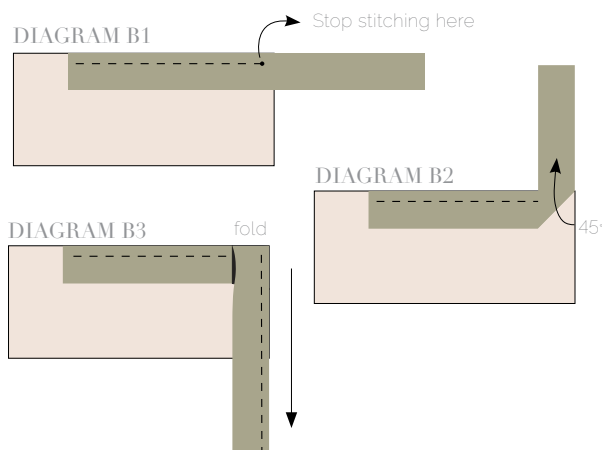
Sew rights sides together.

- Place BACKING FABRIC on a large surface wrong side up. Stretch it with masking tape against that surface.
- Place BATTING on top of backing fabric.
- Place TOP on top of the batting with right side facing up. Smooth away wrinkles using your hands.
- Pin all layers together and baste with basting thread, using long stitches. You can also use safety pins to join the layers.
- Machine or hand quilt starting at the center and working towards the corners. Remember that quilting motifs are a matter of personal preference. Have fun choosing yours!
- After you finished, trim excess of any fabric or batting, squaring the quilt to proceed to bind it.

BINDING

Sew rights sides together.

- Cut enough strips $1\frac{1}{2}$ " wide by the width of the fabric **A** to make a final strip 362" long. Start sewing the binding strip in the middle of one of the sides of the quilt, placing the strip right side down and leaving an approximated 5" tail. Sew with $\frac{1}{4}$ " seam allowance (using straight stitch), aligning the strip's raw edge with the quilt top's raw edge.
- Stop stitching $\frac{1}{4}$ " before the edge of the quilt (DIAGRAM B 1). Clip the threads. Remove the quilt from under the machine presser foot. Fold the strip in a motion of 45° and upward, pressing with your fingers (DIAGRAM B2). Hold this fold with your finger, bring the strip down in line with the next edge, making a horizontal fold that aligns with the top edge of the quilt (DIAGRAM B3). Start sewing at $\frac{1}{4}$ " of the border, stitching all the layers. Do the same in the four corners of the quilt.
- Stop stitching before you reach the last 5 or 6 inches. Cut the threads and remove the quilt from under the machine presser foot. Lay the loose ends of the binding flat along the quilt edge, folding the ends back on themselves where they meet. Press them together to form a crease. Using this crease as the stitching line, sew the two open ends of the binding with right sides together (you can help yourself marking with a pencil if the crease is difficult to see).
- Trim seam to $\frac{1}{4}$ " and press open. Complete the sewing. Turn binding to back of the quilt, turn raw edge inside and stitch by hand using blind stitch.



artgalleryfabrics.com

NOTE: While all possible care has been taken to ensure the accuracy of this pattern, We are not responsible for printing errors or the way in which individual work varies. Please read instructions carefully before starting the construction of this quilt. If desired, wash and iron your fabrics before starting to cut.