



A completed quilt square, likely a variation of the 'Star of Bethlehem' or 'Nine Patch' block. The square is composed of various fabric pieces including solid colors (yellow, red, black, white), floral patterns, and geometric prints (checkered, triangles). It is displayed on a light-colored, textured fabric background.





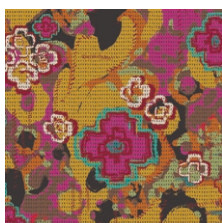
Quilt BLOCK collection

Nuncia

FABRICS DESIGNED BY PAT BRAVO

For More Block Tutorials :
<http://bit.ly/AGFquiltblockcollectionplaylist>

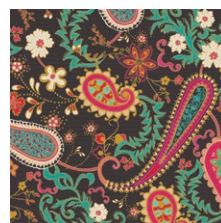
ALWAYS WITH ME



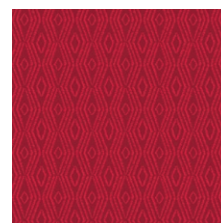
NUC-11980
FLOWERS EVERYWHERE
INTENTION



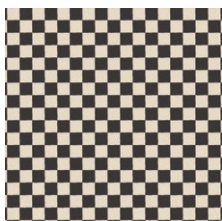
NUC-11981
PRETTY EYES TWINKLY



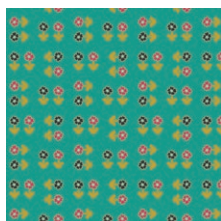
NUC-11982
PAISLEYS FOREVER
BOHEME



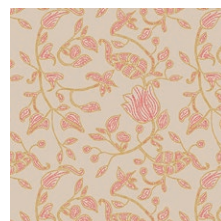
NUC-11983
JUST MORE RED



NUC-11985
DANCE THIS TANGO



NUC-11987
ALWAYS DO GOOD CIELO



NUC-11988
BUENOS AIRES SUD

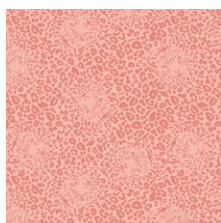


NUC-11989
FAITH

ALWAYS HERE



NUC-21980
FLOWERS EVERYWHERE
CARESS



NUC-21981
PRETTY EYES SWEET



NUC-21982
PAISLEYS FOREVER ROSA



NUC-21984
THE RIGHT PATH



NUC-21986
GOODNESS THOUGHTS



NUC-21987
ALWAYS DO GOOD AMOR



NUC-21988
BUENOS AIRES PAMPA



NUC-21990
LET'S SEW SOMETHING



FINISHED SIZE | 9' x 9'

FABRIC REQUIREMENTS

Fabric A	NUC-11983
Fabric B	NUC-11989
Fabric C	NUC-11985
Fabric D	NUC-11987
Fabric E	NUC-11982
Fabric F	NUC-21990

CUTTING DIRECTIONS

1/4" seam allowances are included.

- Five (5) 1 1/2" squares from Fabric A
- Four (4) 1 1/2" squares from Fabric B
- Four (4) 1 1/2" x 2 1/2" strips from Fabric B
- One (1) 4" square from Fabric C and D
- One (1) 5 3/4" square from Fabric E and F
- Four (4) 2 1/2" squares from Fabric F

CONSTRUCTION

*Sew all rights sides together with 1/4" seam allowance.
HST refers to Half Square Triangle.*

- To make your HST's using the four at a time method take a 4" square from Fabric D and C.

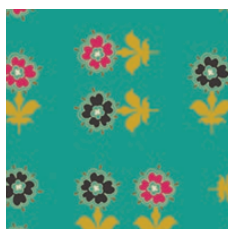


DIAGRAM 1

- Place them right sides together and sew around you piece at 1/4" seam allowance.
- Trim your piece in half on both diagonals to reveal four HST's. Square up your units to 2 1/2".

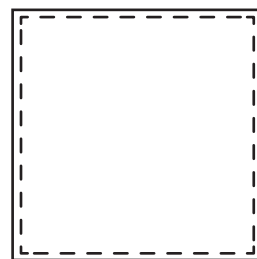


DIAGRAM 2

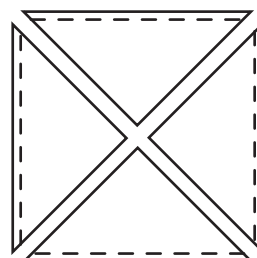


DIAGRAM 3

- To make the rest of your HST's we are going to use the eight at a time method. Take a 5 3/4" square from E and F.
- Place them right sides together and draw two diagonal lines from corner to corner with a fabric marking pen.
- Sew on each side of the line at 1/4" seam allowance.
- Trim your block diagonally on the lines you drew and then trim your block vertically and horizontally to reveal your remaining HST's. Trim your units to 2 1/2".

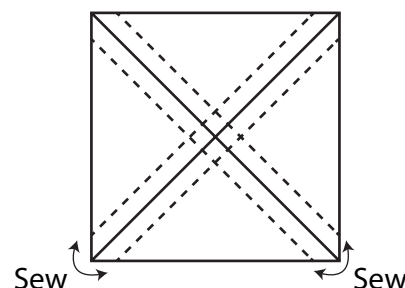


DIAGRAM 4

- To create your corner blocks you will need 2 **E/F** HST's , one **C/D** HST and one 2 1/2" square from Fabric **F**.
- Place them out following the block design and sew up four of these blocks.



DIAGRAM 5

- To create the center strips of your block sew a 1 1/2" square from Fabric **B** and a 1 1/2" x 2 1/2" strip from Fabric **B** to each side of a 1 1/2" square from Fabric **A**. Make two of these units.



DIAGRAM 6

- To create the middle strip of your block sew the remaining units together to create one long strip.



DIAGRAM 7

- To make your top and bottom row sew a corner block unit to each side of a center strip unit.

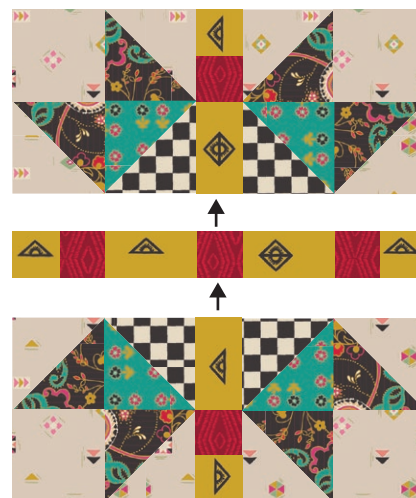


DIAGRAM 8



artgalleryfabrics.com

NOTE: While all possible care has been taken to ensure the accuracy of this pattern, We are not responsible for printing errors or the way in which individual work varies. Please read instructions carefully before starting the construction of this quilt. If desired, wash and iron your fabrics before starting to cut.