

A square quilt block featuring a central red square, surrounded by four triangles of a pink and orange floral pattern. This is enclosed by a dark blue border with small white and green dots. The entire block is framed by a wide orange border. Yellow daisies are placed to the left of the quilt.

Fruits & Flora



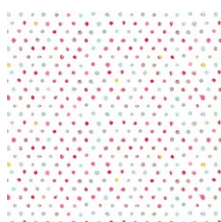
Floralish

FABRICS DESIGNED BY KATARINA ROCCELLA

CHILLED BREEZE



FSH-17400
CASCADING BLOSSOMS



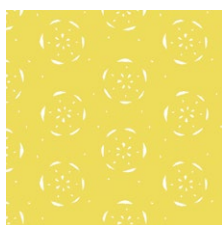
FSH-17402
SEED OF ROSES



FSH-17403
CHERRY PICKING



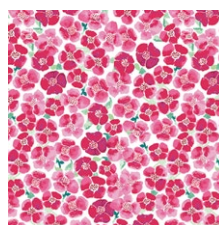
FSH-17405
WONDERING CRANES



FSH-17407
CITRUS LIMON



FSH-17408
PETUNIA GARDEN TREILLAGE



FSH-17410
BLOOMS FIELD FRESH

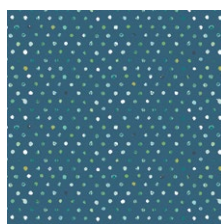


FSH-17411
WATERISH MELON

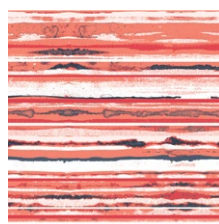
WARM WIND



FSH-27401
POPPY REFLECTIONS



FSH-27402
SEED OF IRIS



FSH-27404
SUNSET TRAILS



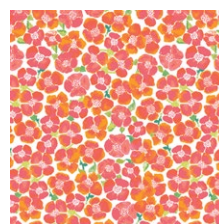
FSH-27406
DANCING FORTUNELLA



FSH-27407
CITRUS TANGERINA



FSH-27409
EVERGREEN CAMELLIA



FSH-27410
BLOOMS FIELD LUMINOUS



FSH-27412
LATTICEWORK VERDANT



FEEL THE DIFFERENCE © 2019 Courtesy of Art Gallery Quilts LLC. All Rights Reserved.

Fruits & Flora

FINISHED SIZE | 9½" x 9½"

FABRIC REQUIREMENTS

Fabric A	FSH-27402	F8
Fabric B	FSH-27410	F8
Fabric C	PE-449	F8
Fabric D	FE-535	F8
Fabric E	FSH-27407	F8
Fabric F	FSH-27409	F8
Fabric G	PE-416	F8
Fabric H	FE-539	F8
Fabric I	FSH-17403	F8
Fabric J	FSH-17410	F8
Fabric K	PE-474	F8
Fabric L	FE-536	F8
Fabric M	FSH-27412	F8
Fabric N	FSH-27406	F8
Fabric O	PE-467	F8
Fabric P	FE-538	F8

CUTTING INSTRUCTIONS

¼" seam allowances are included.

WOF means width of fabric.

- Four (4) 4¼" x 1½" rectangles from Fabrics **A, E, I, M**
- Four (4) 5¼" x 1½" rectangles from Fabrics **A, E, I, M**
- Two (2) 2" x 2" squares from Fabrics **A, E, I, M**
- Two (2) 2⅞" x 2⅞" squares from Fabrics **A, B, E, F, I, J, M, N**
- four (4) of Template 1 from Fabrics **A, E, I, M**
- Eight (8) 2½" x 2¼" rectangle from Fabrics **B, F, J, N**
- One (1) 2¼" x 2¼" square from Fabric **B, F, J, N**
- Four (4) of Template 2 from Fabrics **C, G, K, O**
- Two (2) 1⅜" x 2¼" rectangle from Fabrics **D, H, L, P**
- Two (2) 1⅜" x 5" rectangle from Fabrics **D, H, L, P**

CONSTRUCTION

Sew all rights sides together with ¼" seam allowance.

- Start with the HST construction for Fabrics **A-B**, by placing both fabrics, right sides facing and with a water soluble pen, mark at the diagonal.
- Sew at a ¼" on each side
- Cut at the diagonal.
- Create four (4) **A-B** HST's
- Set aside.

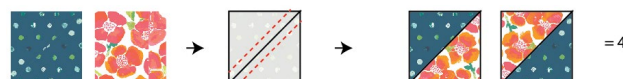


DIAGRAM 1

- Take (1) 2½" x 2¼" rectangle from Fabric **B** and (1) Template 1, Fabric **A** piece and place right sides facing the triangle unit, the bottom point on the bottom right corner of the rectangle and sew.
- Trim excess fabric and your piece should look as the diagram below.



DIAGRAM 2

- Take another 2½" x 2½" rectangle from Fabric **B** and pair it on the opposite side of the assembled unit.
- Repeat the same process by making a total of 4 **B-A-B** pieces.
- Set aside.



DIAGRAM 3

- Take (1) 2¼" x 2¼" square from Fabric **B** and four (4) rectangles from Fabric **D** and pair them as in the diagram below

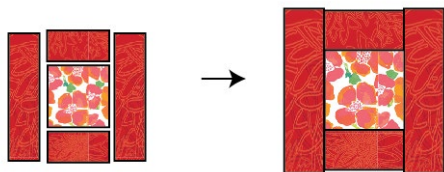


DIAGRAM 4

- Rotate your piece and trim, leaving 1/4" of seam allowance from each corner.

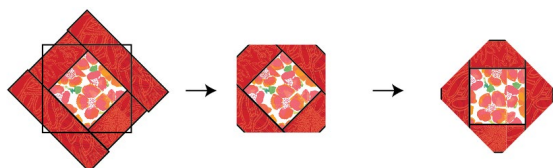


DIAGRAM 5

- Take two (2) 2" x 2" squares from Fabric **A** and cut at the diagonal.
- Take each piece and place on all four sides.
- Trim to have a 4" x 4" block.

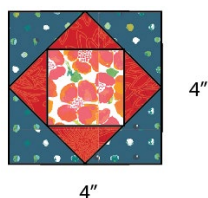


DIAGRAM 6

- Now, take (2) 4¼" x 1½" rectangles from Fabric **A** and one (1) Template 2, Fabric **C** piece.
- Place one side of the triangle template on the corner top right of one rectangle.
- Then, take the other rectangle and align the assembled unit on the bottom left corner.
- Repeat the same process for all rectangle pieces.

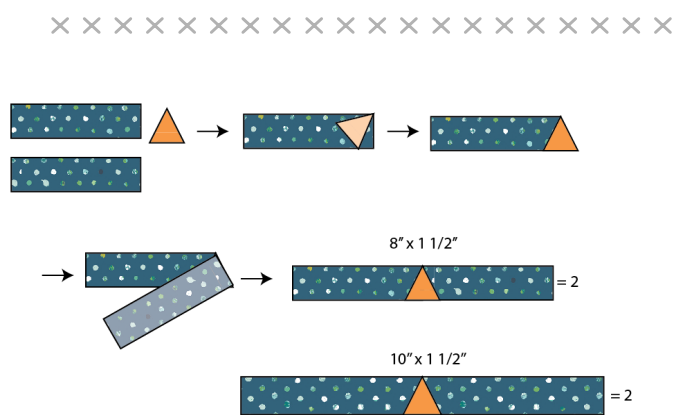


DIAGRAM 7

- Now pair each piece as in the diagram below.

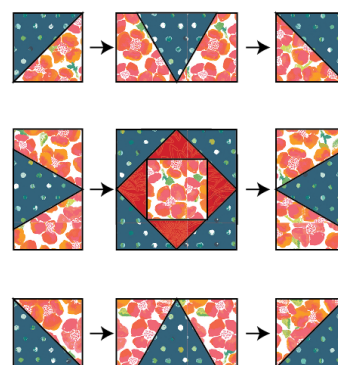


DIAGRAM 8

- Assemble all three rows.
- Your block should look like this:

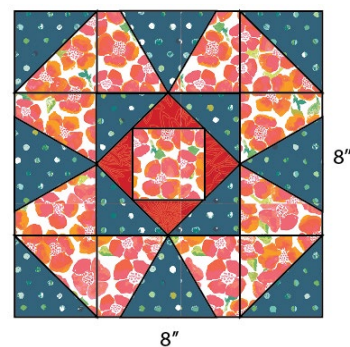


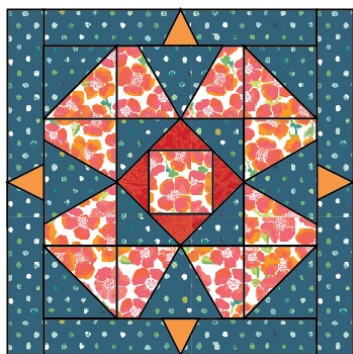
DIAGRAM 9

- Then, take (2) 8" x 1½" rectangle and place one at the top and one at the bottom as in the diagram below.



DIAGRAM 9

- Finish your block by taking (2) 10" x 1½" rectangle and place one at the top and one at the bottom as in the diagram below.



- Quilt as desired.
- If you want to create the other blocks, just follow the same directions.
- Have fun!

XXXXXXXXXXXXXXXXXXXXXXXXXXXXXXXXXXXX



artgalleryfabrics.com

NOTE: While all possible care has been taken to ensure the accuracy of this pattern, We are not responsible for printing errors or the way in which individual work varies. Please read instructions carefully before starting the construction of this quilt. If desired, wash and iron your fabrics before starting to cut.

