

featuring NUNCIA COLLECTION BY PAT BRAVO

X
X
X
X
X
X
X
X
X
X
X
X
X
X
X
X
X

Fatima Bag



FREE PATTERN

XXXXXXXXXXXXXXXXXXXXXXXXXXXX



Fatima Bag

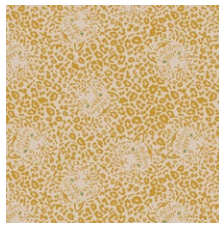


FABRICS DESIGNED BY PAT BRAVO

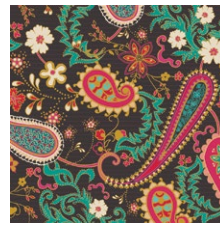
ALWAYS WITH ME



NUC-11980
FLOWERS EVERYWHERE
INTENTION



NUC-11981
PRETTY EYES TWINKLY



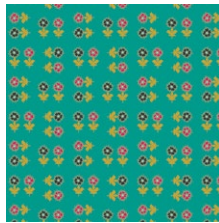
NUC-11982
PAISLEYS FOREVER
BOHEME



NUC-11983
JUST MORE RED



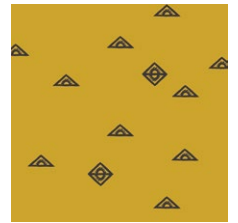
NUC-11985
DANCE THIS TANGO



NUC-11987
ALWAYS DO GOOD CIELO



NUC-11988
BUENOS AIRES SUD

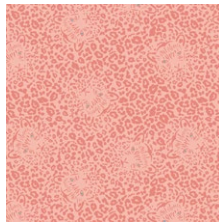


NUC-11989
FAITH

ALWAYS HERE



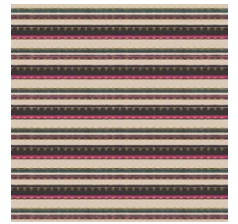
NUC-21980
FLOWERS EVERYWHERE
CARESS



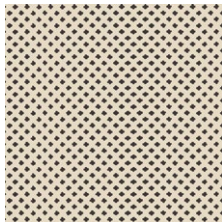
NUC-21981
PRETTY EYES SWEET



NUC-21982
PAISLEYS FOREVER ROSA



NUC-21984
THE RIGHT PATH



NUC-21986
GOODNESS THOUGHTS



NUC-21987
ALWAYS DO GOOD AMOR



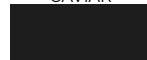
NUC-21988
BUENOS AIRES PAMPA



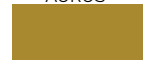
NUC-21990
LET'S SEW SOMETHING



PE-413
CAVIAR



PE-483
AURUS



Fatima Bag

FINISHED SIZE | 15" x 18"

FABRIC REQUIREMENTS

Fabric A	NUC-11989	½ yd.
Fabric B	PE-413	¾ yd.
Fabric C	PE-483	¼ yd.

LINING FABRIC
PR-413 (Included)

Additional Material

25mm Wide Cotton Fringe Tassel Trim

CUTTING DIRECTIONS

¼" seam allowances are included.
WOF means width of fabric.

- Two (2) 15½" x 18½" rectangle from Fabric A
- Two (2) 4" x 22" strip from Fabric B

CONSTRUCTION

Sew all rights sides together with ¼" seam allowance.
HST means Half Square Triangles.

- Start by taking both Fabric A rectangles and quilt as desired.
- For better result, you can add two batting pieces for each so the bag has more structure or use interfacing.

- Take both Fabric A pieces and place them right sided facing.
- Place in between both units the cotton fringe tassel trim.
- Pin all three pieces together and sew at three sides.



DIAGRAM 1

- Set aside.

LINING & DROP IN POCKET

Drop in pocket:

- Take the 10" x 6½" Fabric A piece and place it on top of one piece of your lining fabric. (diagram 1.1)
- Take the edges of Fabric A and fold them in and stitch right on the edge leaving the top part unsewn. (diagram 1.2)
- If you want, create a contrasting color binding detail on the top part of your pocket or a decorative stitch. (diagram 1.3)
- Flip the pocket up into its rightful place.
- Edge-stitch the right and left sides of the pocket. Backstitch to lock the seams in place, at the beginning and end of each stitching line. (diagram 1.4)
- Make a vertical stitching line through the pocket and lining fabric at each of the intervals. This will create 3 drop in pockets. (diagram 1.5)
- Create a quilting motif on the pocket if desired.

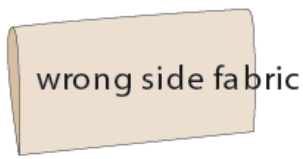


DIAGRAM 1.1

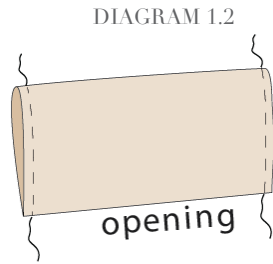


DIAGRAM 1.2

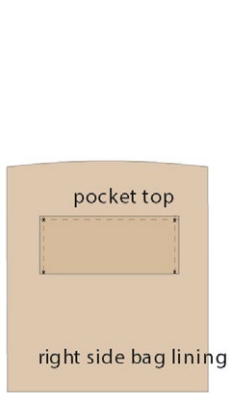


DIAGRAM 1.4

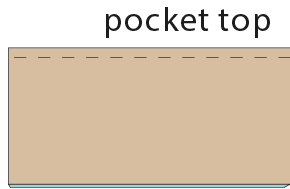
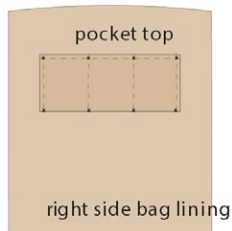


DIAGRAM 1.3

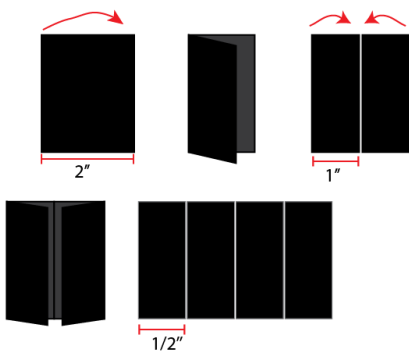


Sewing the Lining to the Exterior

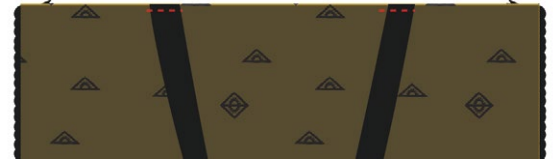
- Place exterior of bag inside lining. Pin lining to the exterior of the bag and sew all the way around the top of your bag at 1/2" seam allowance.
- Pull exterior of bag through the unsewn portion in the lining. Handstitch or machine stitch unsewn portion closed.

Creating the Straps

- Take Two (2) 4" x 22" strip from Fabric B and place fusible interfacing inside.
- Fold it in half to create a crease in the center, then open it and fold the edges towards the center crease.
- Fold the edges and top stitch.



- Once you place your lining inside the tote bag piece, place your handles on the front and back panel of the lining.
- Base stitch.

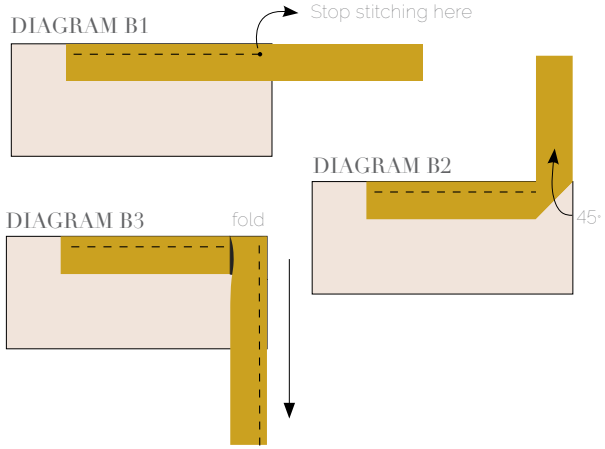


- Follow the Binding placing instruction and bind the top of the bag.
- Once finish, fold up the strap and do a final base stitch.
- Now you have yourself a beautiful tote bag.

BINDING

Sew rights sides together.

- Cut enough strips by the width of the binding fabric to make a final strip . Start sewing the binding strip in the middle of one of the sides of the seam, placing the strip right side down. Sew with 1/4" seam allowance (using straight stitch), aligning the strip's raw edge with the tote seam's raw edge.
- Stop stitching 1/4" before the edge of the tote (DIAGRAM B 1). Clip the threads. Remove the tote from under the machine presser foot. Fold the strip in a motion of 45° and upward, pressing with your fingers (DIAGRAM B2). Hold this fold with your finger, bring the strip down in line with the next edge, making a horizontal fold that aligns with the top edge of the tote (DIAGRAM B3). Start sewing at 1/4" of the border, stitching all the layers. Do the same all the corners.
- Stop stitching before you reach the last 5 or 6 inches. Cut the threads and remove the tote from under the machine presser foot. Lay the loose ends of the binding flat along the tote edge, folding the ends back on themselves where they meet. Press them together to form a crease. Using this crease as the stitching line, sew the two open ends of the binding with right sides together (you can help yourself marking with a pencil if the crease is difficult to see).
- Trim seam to 1/4" and press open. Complete the sewing. Turn binding to back of the tote, turn raw edge inside and stitch by hand using blind stitch.



artgalleryfabrics.com

NOTE: While all possible care has been taken to ensure the accuracy of this pattern, we are not responsible for printing errors or the way in which individual work varies. Please read instructions carefully before starting the construction of this quilt. If desired, wash and iron your fabrics before starting to cut.

© 2019 Courtesy of Art Gallery Quilts LLC. All Rights Reserved.