



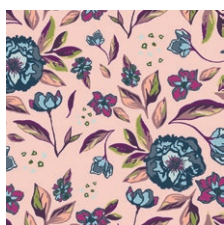
A square quilt block is displayed on a dark wooden surface. The quilt features a central panel with a black background, showing a white hummingbird in flight above a pair of red lips. This central panel is surrounded by a border of purple fabric with a white floral pattern. The corners of the quilt are decorated with teal fabric featuring a yellow crescent moon and a wreath of leaves. The quilt is laid out next to several dried botanical specimens, including a red flower, a brown flower, and a small purple flower, along with a piece of wood.

Mystical LAND

FABRICS DESIGNED
BY MAUREEN CRACKNELL

For More Block Tutorials :
<http://bit.ly/AGFquiltblockcollectionplaylist>

ALBA GLISTEN



MSL-13960
ENCHANTED FLORA ABLUSH



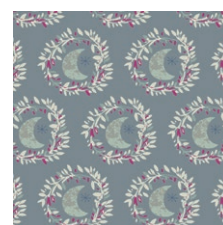
MSL-13961
BOKEH LATTICE CREAM



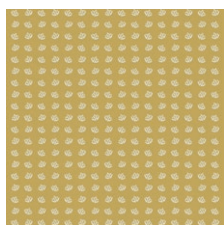
MSL-13962
MIRROR LAKE ROSE



MSL-13963
ELIXIR PAEONIA



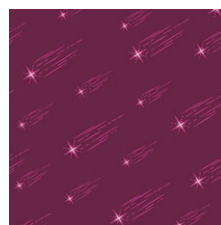
MSL-13964
LUNAR ILLUSION CRYSTAL



MSL-13965
SECRET SEEDS SOLAR



MSL-13966
REFRACTIONS ORCHID



MSL-13967
ASTRAL RAIN POTION

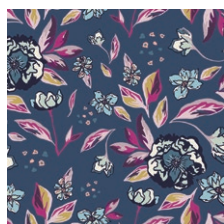


MSL-13968
MAGIC FAUNA MIRAGE

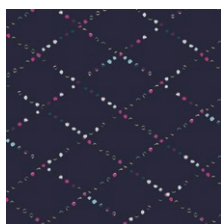


MSL-13969
SHRUB CHARM SAGE

IRIS SPARKLE



MSL-23960
ENCHANTED FLORA ABLUE



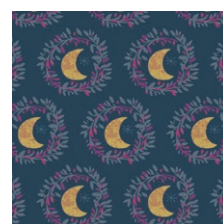
MSL-23961
BOKEH LATTICE GLOW



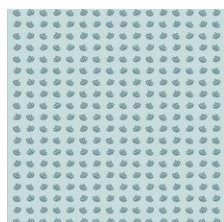
MSL-23962
MIRROR LAKE MOONLIT



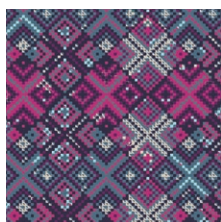
MSL-23963
ELIXIR LAVANDULA



MSL-23964
LUNAR ILLUSION FLAME



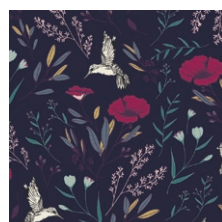
MSL-23965
SECRET SEEDS WHISPER



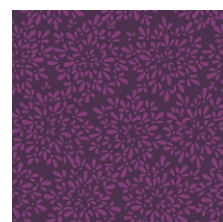
MSL-23966
REFRACTIONS VIOLET



MSL-23967
ASTRAL RAIN CLUSTER



MSL-23968
MAGICAL FAUNA MYSTIQUE



MSL-23969
SHRUB CHARM CURRANT



FEEL THE DIFFERENCE © 2019 Courtesy of Art Gallery Quilts LLC. All Rights Reserved.



FABRIC REQUIREMENTS

Fabric A	MSL-23968
Fabric B	MSL-23967
Fabric C	MSL-23963
Fabric D	MSL-13967
Fabric E	MSL-23964
Fabric F	MSL-13961

CUTTING DIRECTIONS

- One (1) 4 1/2" square from Fabric **A**
- Eight (8) 1 1/4" x 3" strip from Fabric **B**
- Eight (8) 2 1/2" squares from Fabric **C**
- Eight (8) 1 1/4" squares from Fabric **B** and **C**
- Four (4) 3 "squares from Fabric **E**
- Twelve (12) 1 1/4" squares from Fabric **F** and **D**
- Four (4) 1 3/4" x 4 1/2" strips from Fabric **F**

CONSTRUCTION

- Take all your 1 1/4" squares from Fabric **B,C,D**, and **F** and draw a diagonal line on the wrong side of the fabric from corner to corner with a fabric marking pen.
- Place all your 2 1/2" squares from Fabric **C** out in front of you following the block design. Take your 1 1/4" squares from Fabric **B** and **F** and place them in each corner of your block as follows.

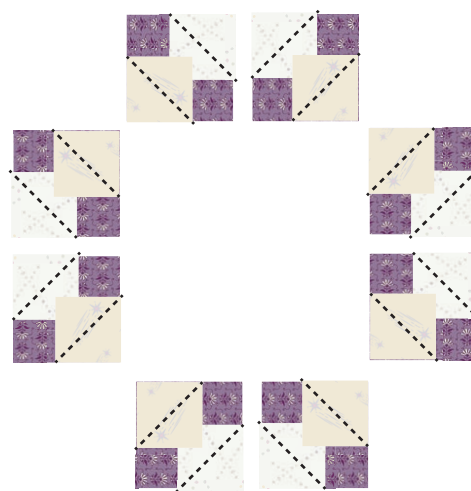


DIAGRAM 1

- Next take all your 3" fussy cut squares from Fabric **E** and place your remaining 1 1/4" squares from Fabric **F** to each corner. Sew on the line you drew.



DIAGRAM 2

- Now sew these strips to the other side of your corner moon pieces.

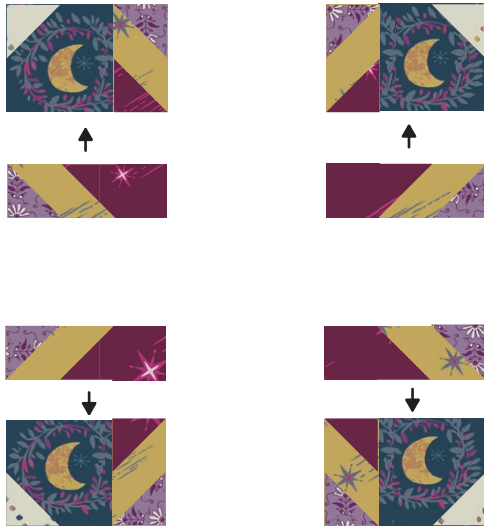


DIAGRAM 9

- To sew your side rows place your moon pieces in each corner and sew to each side of two of your middle side units.

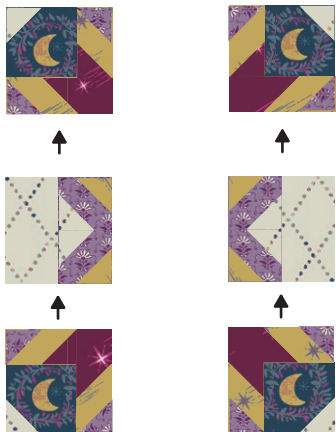


DIAGRAM 10

- Sew your side rows to your center row matching up seams and your block is complete!

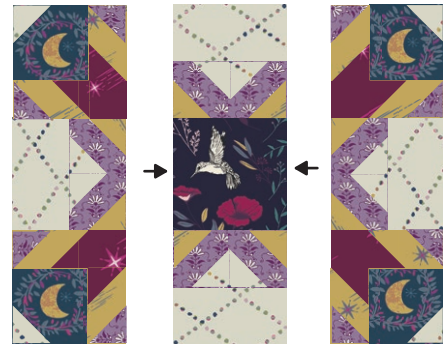


DIAGRAM 11



artgalleryfabrics.com

NOTE: While all possible care has been taken to ensure the accuracy of this pattern, We are not responsible for printing errors or the way in which individual work varies. Please read instructions carefully before starting the construction of this quilt. If desired, wash and iron your fabrics before starting to cut.