

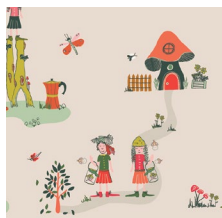
Chair Pillow

DESIGNED BY AGF STUDIO

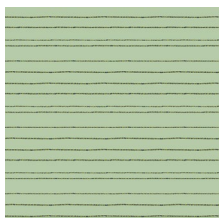


Dew + Moss

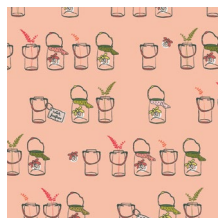
FABRICS DESIGNED BY ALEXANDRA BORDALLO



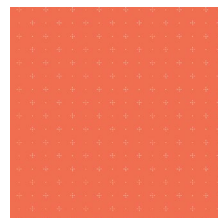
DWM-45600
THE MEADOW FELLOWS



DWM-45601
DEW'S CLOTH-LINE



DWM-45602
JARS O' BUGS



DWM-45603
STARRY ORANGE YOU



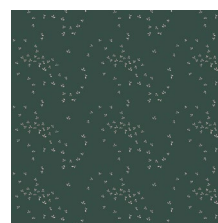
DWM-45604
GLOWLY BOSQUE



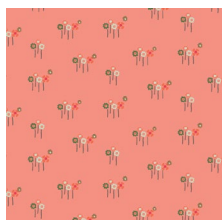
DWM-45605
PLAYFUL MINI BUNTING



FSH-17410
MOSS'S SNAIL MAIL



DWM-45607
FLY NIGHT SKY



DWM-45608
DAISY BUTTON BUDS



DWM-45609
PHYSIOGNOMIES



DWM-45610
GNOMES' MUSHROOM HOMES



DWM-45611
BUGGY & POSY



FEEL THE DIFFERENCE © 2019 Courtesy of Art Gallery Quilts LLC. All Rights Reserved.

Chair Pillow

FINISHED SIZE | 12" Diameter

FABRIC REQUIREMENTS

Fabric A	DWM-45600	FQ.
Fabric B	DWM-45604	½ yd.
Fabric C	DWM-45606	FQ.
Fabric D	DWM-45611	FQ.

BACKING FABRIC

Fabric B *(Included)*

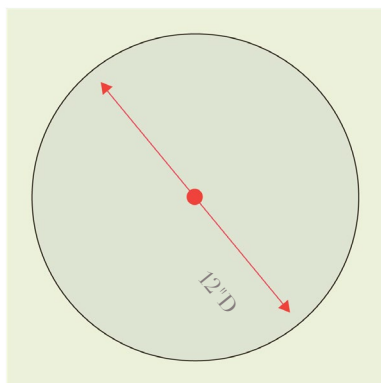
CUTTING DIRECTIONS

Two (2) template from fabric A, B, C & D.

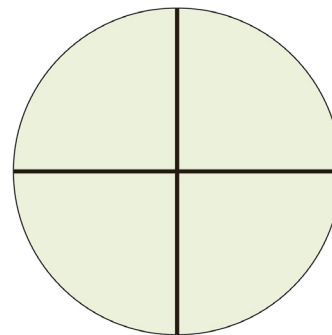
One (1) Backing circle from fabric B.

BACKING & TEMPLATE DRAFT

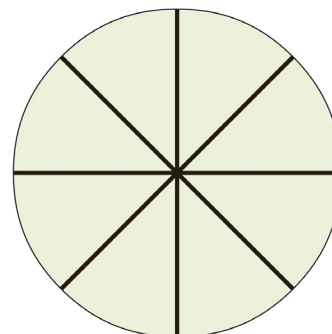
- Measure the chair you are planning to use for this project.
- Draft a circle using the diameter of your pillow measurement.
- In this case we did a 12" D circle.



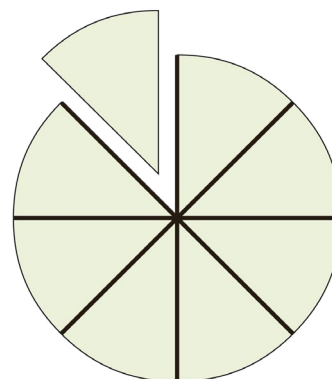
- XXXXXXXXXXXXXXXXXXXXXXXXXXXX
- Before moving on with the pattern, cut your backing circle using fabric B.
 - Add ¼" to your backing circle for seam allowance.
 - Set aside.
 - Continue with the pattern draft.
 - Now, make a cross tracing one vertical line on the center of the circle and one horizontal line on the center too.



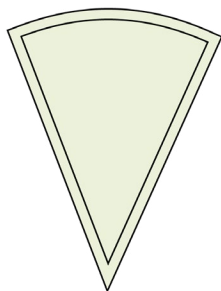
- Make an X tracing one diagonal line from the left bottom to the right top of the circle, make sure it is centered.
- Then trace another line from the left top to the right bottom of the circle, make sure it is centered.



- Cut one of the cone pieces.



- Add $\frac{1}{4}$ " to your backing circle for seam allowance.
- Voila! the template is ready.



CONSTRUCTION

Sew all rights sides together with $\frac{1}{4}$ " seam allowance.

- Take one template piece from each fabric **A-D**.



DIAGRAM 1

- Attach one **C** fabric template to one **B** fabric template.
- Attach one **D** fabric template to one **A** fabric template.



DIAGRAM 2

- Repeat one more time in order to end up with two **CB** and **DA**.

XXXXXXXXXXXXXXXXXXXXXXXXXXXXXXXXXXXX



DIAGRAM 3

- Attach the **CB** to the **DA** creating two semi-circles.



DIAGRAM 4

- Attach the two semi-circles creating one circle.



DIAGRAM 5

- It is recommended to add batting on the back of the pillow front.
- Machine or hand quilt starting at the center and working towards the corners. Remember that quilting motifs are a matter of personal preference. Have fun choosing yours!

CREATE THE PILLOW BACK

- Place the pillow front on top of the backing fabric, right sides of fabrics together.
- Sew around at 1/4" from the edge leaving a gap in the bottom,
- Turn the pillow to the right side, use some pillow fill to structure it and handstitch the gap.

*Congratulations
& enjoy*



artgalleryfabrics.com

NOTE: While all possible care has been taken to ensure the accuracy of this pattern, We are not responsible for printing errors or the way in which individual work varies. Please read instructions carefully before starting the construction of this quilt. If desired, wash and iron your fabrics before starting to cut.