

# Blaze



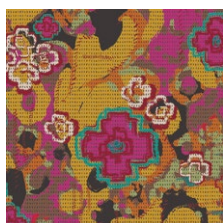


# Blaze



FABRICS DESIGNED BY PAT BRAVO

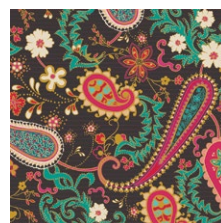
ALWAYS WITH ME



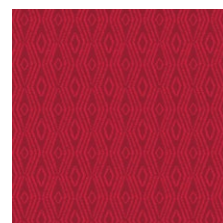
NUC-11980  
FLOWERS EVERYWHERE  
INTENTION



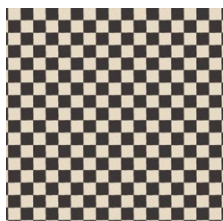
NUC-11981  
PRETTY EYES TWINKLY



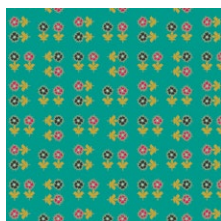
NUC-11982  
PAISLEYS FOREVER  
BOHEME



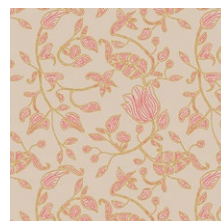
NUC-11983  
JUST MORE RED



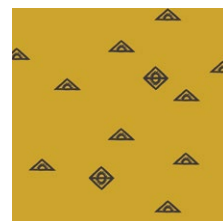
NUC-11985  
DANCE THIS TANGO



NUC-11987  
ALWAYS DO GOOD CIELO

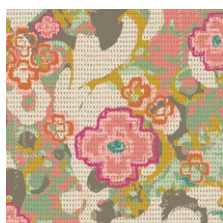


NUC-11988  
BUENOS AIRES SUD

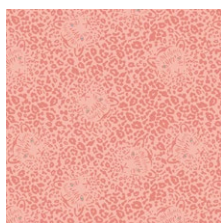


NUC-11989  
FAITH

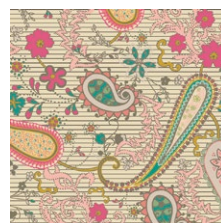
ALWAYS HERE



NUC-21980  
FLOWERS EVERYWHERE  
CARESS



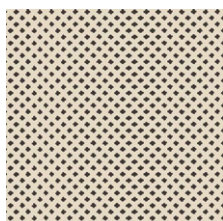
NUC-21981  
PRETTY EYES SWEET



NUC-21982  
PAISLEYS FOREVER ROSA



NUC-21984  
THE RIGHT PATH



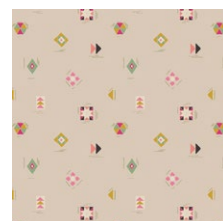
NUC-21986  
GOODNESS THOUGHTS



NUC-21987  
ALWAYS DO GOOD AMOR



NUC-21988  
BUENOS AIRES PAMPA



NUC-21990  
LET'S SEW SOMETHING



FEEL THE DIFFERENCE © 2019 Courtesy of Art Gallery Quilts LLC. All Rights Reserved.



PE-486  
VANILLA CUSTARD



FINISHED SIZE | 17" x 17"

## FABRIC REQUIREMENTS

Fabric A	NUC-11983	1/3 yd.
Fabric B	PE-486	1/4 yd.
Fabric C	NUC-21984	1/4 yd.
Fabric D	NUC-11980	1/3 yd.

### BACKING FABRIC

NUC-11983 1/2 yd. (suggested)

## CUTTING DIRECTIONS

1/4" seam allowances are included.  
WOF means width of fabric.

- Two (2) 11 1/2" x 11 1/2" square from Fabric A
- One (1) 3 3/4" x 3 1/2" square from Fabric B
- Two (2) 3 1/2" x 3 1/2" square from Fabric C
- Seven (7) 3 7/8" x 3 7/8" square from Fabrics B, C  
For Fabric C, cut On Point
- One (1) 9 1/2" x 9 1/2" square from Fabric D

## CONSTRUCTION

Sew all rights sides together with 1/4" seam allowance.  
HST means Half Square Triangles.

- Start with the HST method in order to assemble Fabrics B-C.

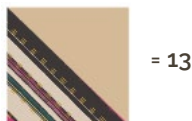


DIAGRAM 1

- Pair (3) HST's from Fabric B and C as in the diagram below.



DIAGRAM 2

- Take Fabric D square and pair the assembled HST's on the top part of Fabric D.



DIAGRAM 3

- Pair (3) HST's from Fabric B, C as in the diagram below.



DIAGRAM 4

- Take Fabric D square and pair the assembled HST on the bottom part of Fabric D.

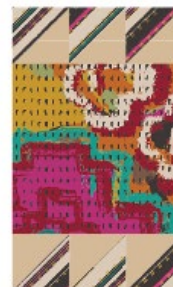


DIAGRAM 5

- Take (1) 3 1/2" x 3 1/2" square from Fabric B, (1) from Fabric C, and (3) HST from Fabric B-C and pair them as in the diagram below:



DIAGRAM 6



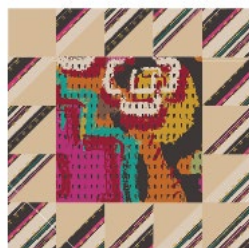
- Pair the assembled piece on the left side of Fabric **D** square.



- Pair (4) HST's and (1) Fabric **C** 3 ½" x 3 ½" square as in the diagram below.



- Now, pair the assembled piece on the right side of the block.



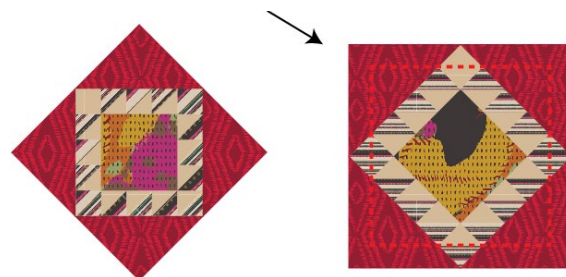
- Take (1) 11 ½" x 11 ½" square from Fabric **A** and cut on the diagonal.



- Repeat the same for the other Fabric **A** square but cutting on the opposite side.



- Place your pieces in each corner as in the diagram below.
- Before you sew them, make sure your print is kept vertically.
- Rotate the piece 90° and trim to 17 ½" x 17 ½" square.



## CREATING THE BACK PILLOW

*Sew all rights sides together with  $\frac{1}{4}$ " seam allowance.  
Press open.*

- To make a envelope back for your pillow take both  $17\frac{1}{2}$ " x 13" rectangles and fold one 13" side on each rectangle in  $\frac{1}{2}$ " and press and then fold another  $\frac{1}{2}$ " and press.
- Top stitch as close to the edge as possible.
- Place rectangles right side together on top of each other to the front of your pillow and stitch all the way around your pillow at  $\frac{1}{4}$ " seam allowance.
- Clip corners at seam allowance and flip piece to the right side of the fabric.
- Fill pillow with a 17" x 17" pillow form and enjoy!



[artgalleryfabrics.com](http://artgalleryfabrics.com)

NOTE: While all possible care has been taken to ensure the accuracy of this pattern, We are not responsible for printing errors or the way in which individual work varies. Please read instructions carefully before starting the construction of this quilt. If desired, wash and iron your fabrics before starting to cut.

© 2019 Courtesy of Art Gallery Quilts LLC. All Rights Reserved.