

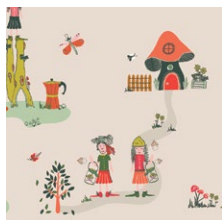
A square blue linen cushion is displayed against a textured, light brown background. The cushion features a large, abstract, wavy pattern in the center, created using various colorful fabric strips (red, yellow, black, white, and orange) with different patterns (floral, geometric, and solid colors). The pattern is outlined with blue stitching. In the upper left corner, there is a small, embroidered butterfly with red wings and a black body.

Aura

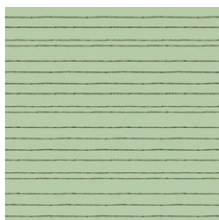
Dew + Moss



FABRICS DESIGNED BY ALEXANDRA BORDALLO



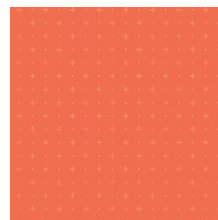
DWM-45600
THE MEADOW FELLOWS



DWM-45601
DEW'S CLOTH-LINE



DWM-45602
JARS O' BUGS



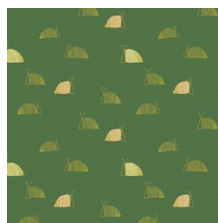
DWM-45603
STARRY ORANGE YOU



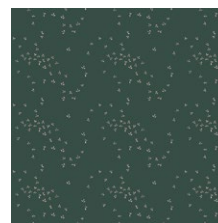
DWM-45604
GLOWY BOSQUE



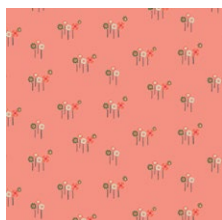
DWM-45605
PLAYFUL MINI BUNTING



DWM-45606
MOSS'S SNAIL MAIL



DWM-45607
FLY NIGHT SKY



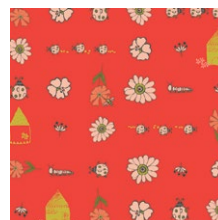
DWM-45608
DAISY BUTTON BUDS



DWM-45609
PHYSIOGNOMIES



DWM-45610
GNOMES' MUSHROOM HOMES



DWM-45611
BUGSY & POSY



FEEL THE DIFFERENCE © 2019 Courtesy of Art Gallery Quilts LLC. All Rights Reserved.



FINISHED SIZE | 22" x 22"

FABRIC REQUIREMENTS

Fabric A	DWM-45611	¼ yd.
Fabric B	DWM-45603	¼ yd.
Fabric C	DWM-45600	¼ yd.
Fabric D	DWM-45602	¼ yd.
Fabric E	DWM-45608	¼ yd.
Fabric F	DWM-45604	⅛ yd.
Fabric G	DWM-45610	⅛ yd.
Fabric H	PE-416	⅛ yd.
Fabric I	PE-426	¼ yd.
Fabric J	PE-444	¼ yd.
Fabric K	PE-471	¼ yd.
Fabric L	DEN-S-2003	¾ yd.

CUTTING DIRECTIONS

Fabric **A,E,I,J**

- Cut Four (4) 1½ x WOF

Fabric **B,C,K**

- Cut Three (3) 1½ x WOF.

Fabric **B,C,K**

- Cut one (1) 1½ x WOF.

Fabric **D**

- Cut Five (5) 1½ x WOF.

Templates

- Cut one (1) Template M1 and M2 with Fabric **A**
- Cut one (1) Template M3 and M4 with Fabric **F**

CONSTRUCTION

Sew all rights sides together with ¼" seam allowance.

For this project, start by sewing strips together in the order of **I,K,D,E,B,A,C,J,I,K,D,E,D,F,A,I,G,H,D,E,B,A,C,J,I,K,D,E,B,A,C,J**. See Diagram below for reference.

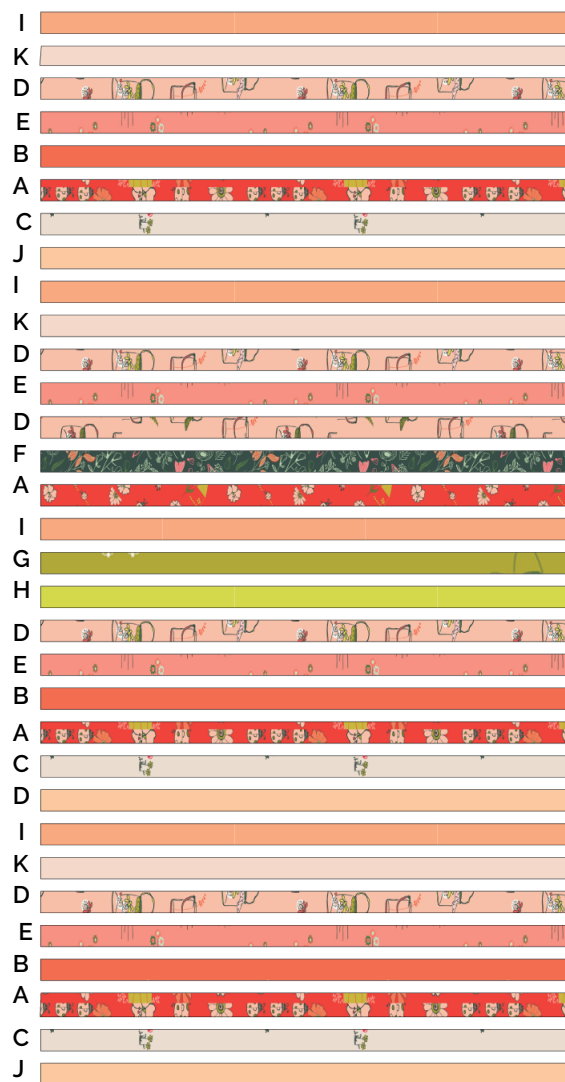


DIAGRAM 1

You will end up with a striped block of 32½ x WOF

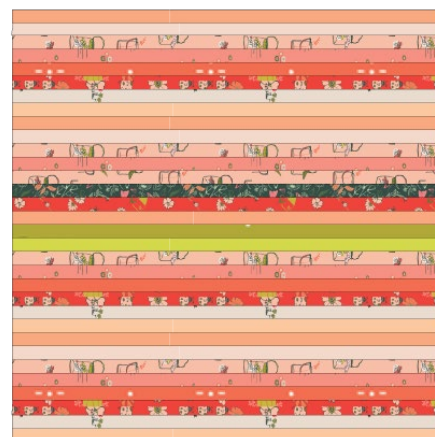


DIAGRAM 2

- Take the mushroom template, place it on top of the 22½ x 22½ square from fabric L and using a fabric pen trace it.



DIAGRAM 3

- Position fabric L on point and place it on top of the striped block and batting
- Pin all corners and sew following the traced line. Then sew it again ¼" away from the first traced line.
- Start quilting inside the mushroom making wave lines in a diagonal way. (See Diagram below for reference)

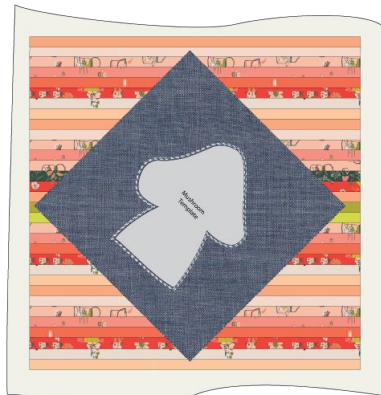


DIAGRAM 4

- Once you finish quilting, with a scissors start cutting in between the sewing lines to reveal the block behind.
- Trim excess fabric

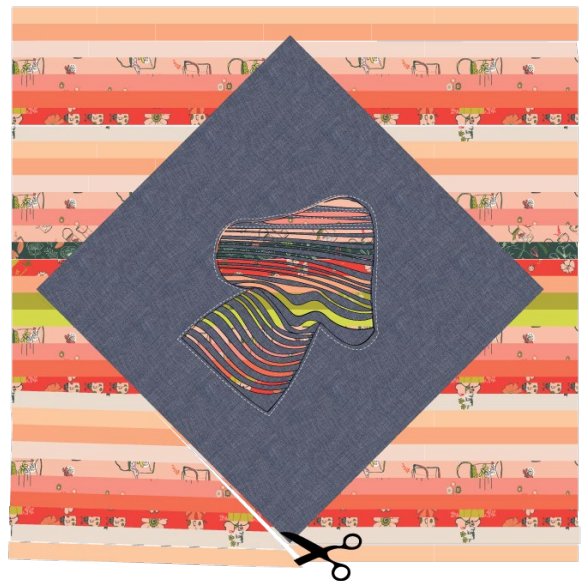


DIAGRAM 5

- Take template M1 and M2 from fabric A, and with Steam A seam apply it in the left side of the front of the pillow cover. Repeat the same step with template M3 and M4. See Diagram below for reference.

M1, M2

Fabric A



M3, M4

Fabric F

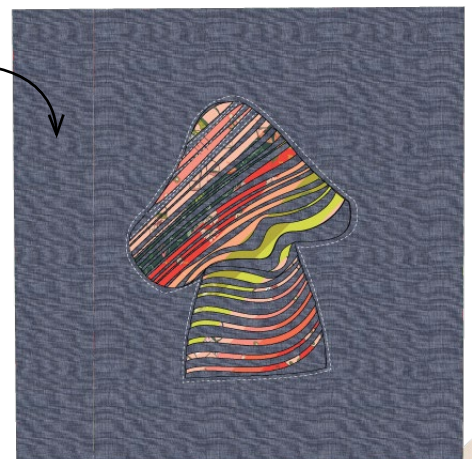


DIAGRAM 6

CREATING THE BACK PILLOW

*Sew all rights sides together with $\frac{1}{4}$ " seam allowance.
Press open.*

- To make a envelope back for your pillow take both 22" x 17" rectangles and fold one 17" side on each rectangle in $\frac{1}{2}$ " and press and then fold another $\frac{1}{2}$ " and press.
- Top stitch as close to the edge as possible.
- Place rectangles right side together on top of each other to the front of your pillow and stitch all the way around your pillow at $\frac{1}{4}$ " seam allowance.
- Clip corners at seam allowance and flip piece to the right side of the fabric.
- Fill pillow with a 22" x 22" pillow form and enjoy!



artgalleryfabrics.com

NOTE: While all possible care has been taken to ensure the accuracy of this pattern, We are not responsible for printing errors or the way in which individual work varies. Please read instructions carefully before starting the construction of this quilt. If desired, wash and iron your fabrics before starting to cut.

© 2019 Courtesy of Art Gallery Quilts LLC. All Rights Reserved.



Temlpates



Mushroom Temlpate



