

X
X
X
X
X
X
X
X
X
X
X
X

Sparkle DRESS



XXXXXXXXXXXXXXXXXXXXXXXXXXXXXXXXXXXX



Sparkle DRESS

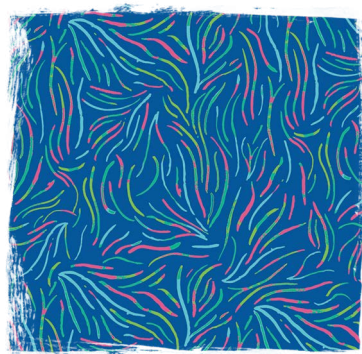
FABRIC REQUIREMENTS

3 yards of your favorite fabric

Featuring

West Palm

FABRIC COLLECTION DESIGNED BY KATIE SKOOG



/rayon/

100% RAYON | 54-56" WIDE | 76g/sqm

/ R-54505 PLAYFUL SEAWEED NIGHTGLOW /

CUTTING DIRECTIONS

- Cut 3 (three) 35 ½" squares
- Cut 2 (two) 2 ½" x 22 ½" strips



FEEL THE DIFFERENCE © 2019 Courtesy of Art Gallery Quilts LLC. All Rights Reserved.

DRESS CONSTRUCTION

Sew all rights sides together with $\frac{1}{2}$ " seam allowance. Press open.

- Start by hemming the edges of all the squares.
- Then begin constructing the front side of the dress. To accomplish this, take two $35\frac{1}{2}$ " squares and layer one on top of the other, right sides together.
- Make a mark measuring $6\frac{3}{4}$ " from the top right corner down.
- Make a mark measuring $10\frac{3}{4}$ " from the bottom right corner to the left.
- Trace a diagonal line that joins both marks with a fabric erasable marker.
- Sew on top of the line to attach both squares together.
- After you are done sewing, trim the excess fabric on the side and leave $\frac{1}{2}$ " seam allowance. Press open.

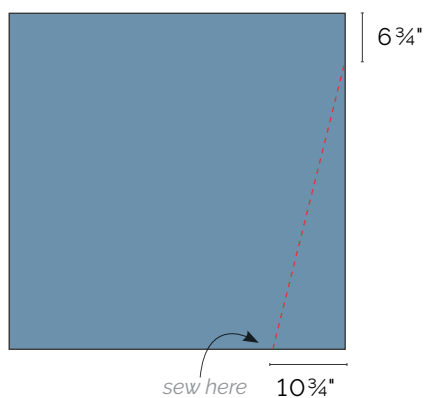


Diagram 1

- Measure $9\frac{1}{2}$ " from the top (inside) corners on both sides and make a mark, and $\frac{1}{2}$ " on the other corners (outside). See Diagram 2 for reference

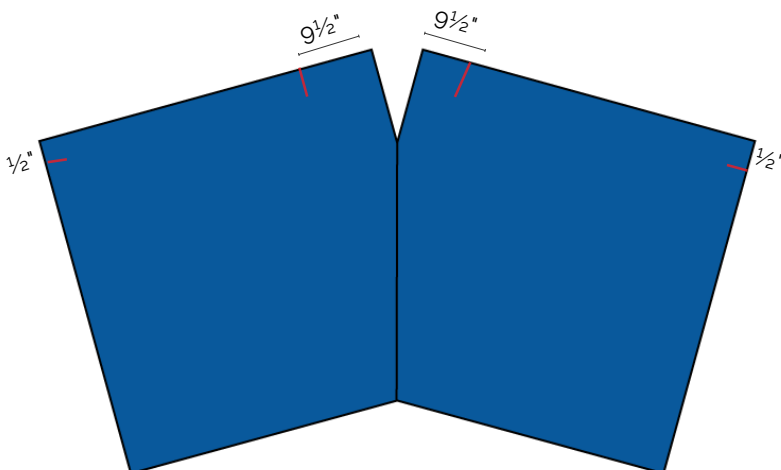


Diagram 2

- Take the remaining $35\frac{1}{2}$ " square, and from a corner measure $9\frac{1}{2}$ " down on both sides of the corner, and make a mark
- Measure $\frac{1}{2}$ " in on the other two corners, (See Diagram 3 for reference)

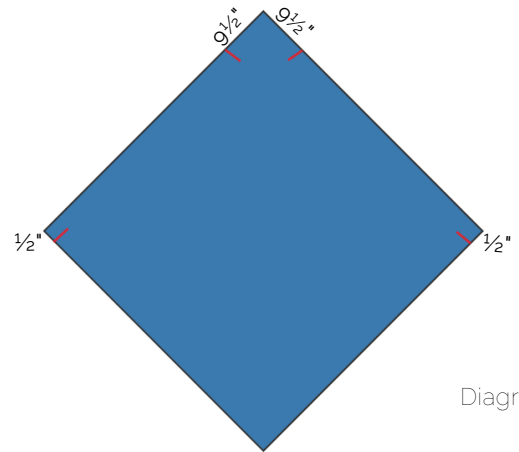


Diagram 3

- Position the $35\frac{1}{2}$ " square on point on top of the front side of the dress, right sides together as shown in the diagram below.

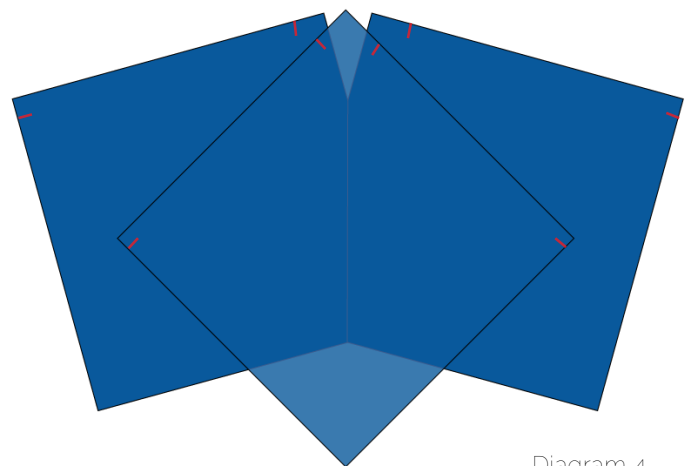


Diagram 4

- Starting on the left side, align the both squares (top & bottom) aligning the marks of $9\frac{1}{2}$ " at the top and the $\frac{1}{2}$ " at the bottom.
- Sew from the bottom mark diagonally up to the $9\frac{1}{2}$ " mark. (Repeat the same step on the other side)

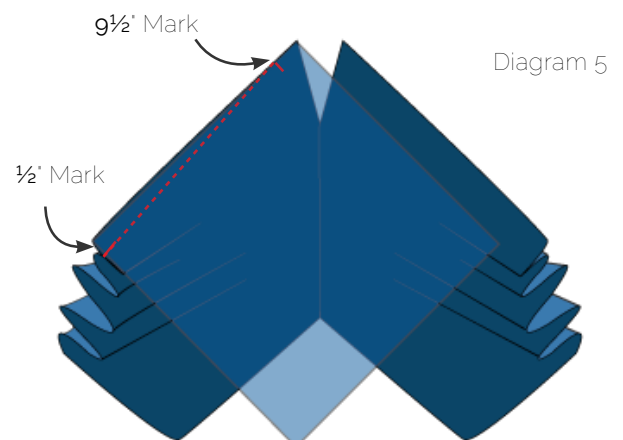
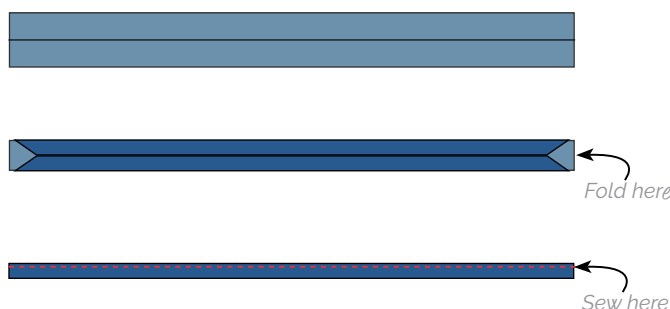


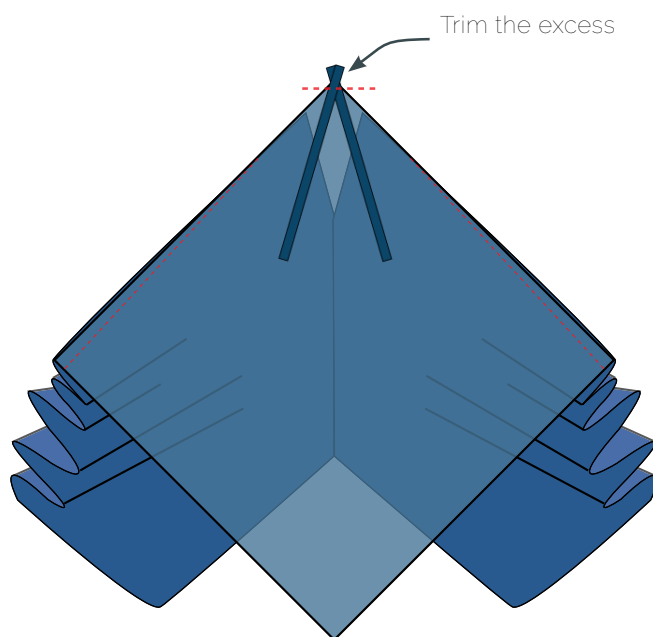
Diagram 5

STRAPS CONSTRUCTION

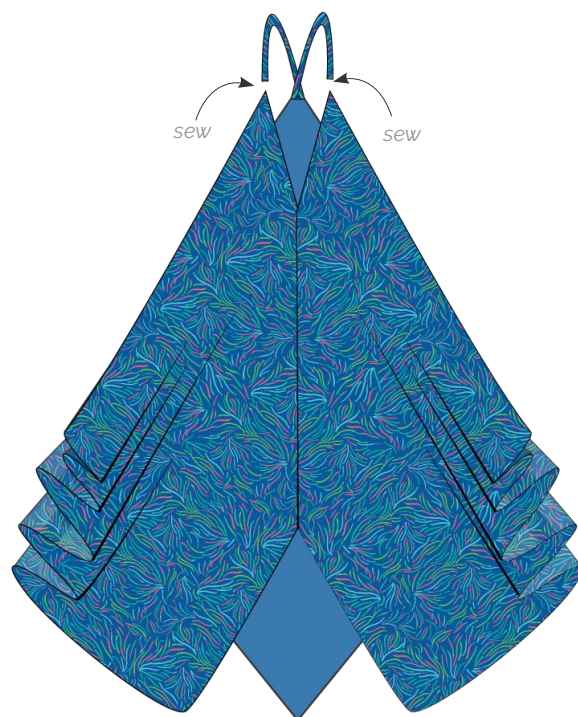
- To construct the straps take the 2½" x 22½" strips.
- Begin by folding one of the strips in half and iron it so it will mark down the middle.
- Unfold.
- Now take top and bottom edge and fold them to make them meet at the center fold and iron again.
- Fold again in half, iron and sew the open edge ¼" away from the edge. (Repeat the same step with the other strap)



- Pin both of the strips on the back of the dress, sew and trim the excess fabric. (See diagram below for strip positioning)



- Measuring how long you want the length of the dress, finish by sewing the straps to the front of the dress.



artgalleryfabrics.com

NOTE: While all possible care has been taken to ensure the accuracy of this pattern, We are not responsible for printing errors or the way in which individual work varies. Please read instructions carefully before starting the construction of this dress. If desired, wash and iron your fabrics before starting to cut.

