

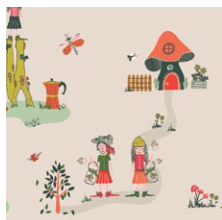


Mushroom Home

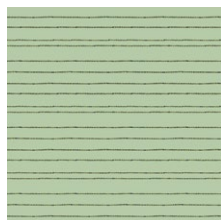


Dew + Moss

FABRICS DESIGNED BY ALEXANDRA BORDALLO



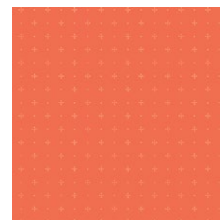
DWM-45600
THE MEADOW FELLOWS



DWM-45601
DEW'S CLOTH-LINE



DWM-45602
JARS O' BUGS



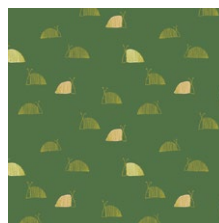
DWM-45603
STARRY ORANGE YOU



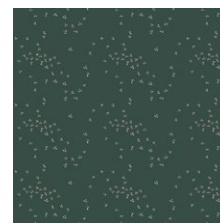
DWM-45604
GLOWY BOSQUE



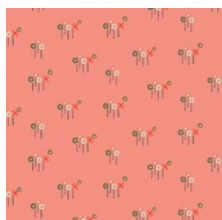
DWM-45605
PLAYFUL MINI BUNTING



DWM-45606
MOSS'S SNAIL MAIL



DWM-45607
FLY NIGHT SKY



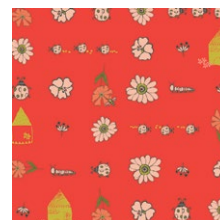
DWM-45608
DAISY BUTTON BUDS



DWM-45609
PHYSIOGNOMIES



DWM-45610
GNOMES' MUSHROOM HOMES



DWM-45611
BUGSY & POSY



FEEL THE DIFFERENCE © 2019 Courtesy of Art Gallery Quilts LLC. All Rights Reserved.

FABRIC REQUIREMENTS

BLOCK1

Fabric A	DWM-45611	1/4yd.
Fabric B	DWM-45610	3/8yd.
Fabric C	DWM-45609	1/8yd.
Fabric D	PE-447	1/8yd.

BLOCK2

Fabric E	DWM-45601	1/8yd.
Fabric F	DWM-45604	1/8yd.
Fabric G	PE-457	1/8yd.
Fabric B	DWM-45610	F8

BLOCK3

Fabric H	DWM-45600	3/8yd.
Fabric I	DWM-45608	1/8yd.
Fabric J	DWM-45607	FQ
Fabric K	PE-423	1/8yd.

BLOCK4

Fabric L	DWM-45606	1/8yd.
Fabric M	DWM-45605	1/8yd.
Fabric N	PE-444	1/8yd.
Fabric J	DWM-45607	FQ

CUTTING DIRECTIONS

Two (2) 10 1/2" x 1 1/2" strips from Fabrics **A, B, H, J**

One (1) 5" x 5" squares from Fabrics **A, J**

Two (2) 5" x 5" squares from Fabrics **B, H**

Two (2) 3 1/4" x 3 3/8" squares from Fabrics **A, H**

One (1) 3 1/4" x 3 3/8" square from Fabrics **E, M**

Three (3) 3 1/4" x 3 3/8" squares from Fabric **B, J**

Six (6) 2 7/8" x 2 7/8" squares from Fabric **B**

One (1) 2 7/8" x 2 7/8" square from Fabrics **A, H, J**

Five (5) 2 7/8" x 2 7/8" squares from Fabric **E, J, M**

One (1) 2 1/2" x 2 1/2" square from Fabric **B, E, J, M**

Three (3) 2 7/8" x 2 7/8" squares from Fabric **C, D, F, G, I, K, L, N**

Four (4) 2 1/2" x 2 1/2" squares from Fabric **C, F, I, L**

Two (2) 2 1/2" x 2 1/2" squares from Fabric **D, G, K, N**

CONSTRUCTION

Sew all rights sides together with 1/4" seam allowance.

- For Fabrics **B, C**, and **M** use the Templates at the end of the instructions, as a guide to cut On Point



- Start with the HST method for the following 2 7/8" fabric units.
- Make sure the directions of the fabrics are facing diagonally as in the Diagram below

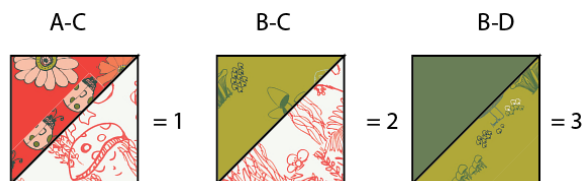


DIAGRAM 1

- Assemble the HST and the 2 1/2" block as in the diagram below.

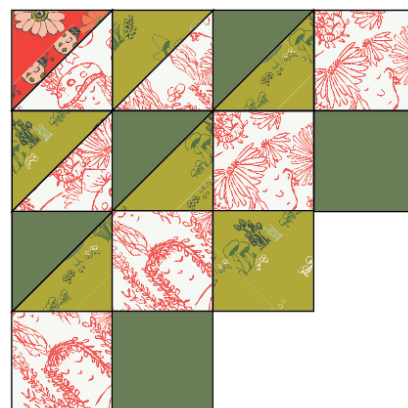


DIAGRAM 2

- Rotate your piece and trim you piece as in the Diagram below

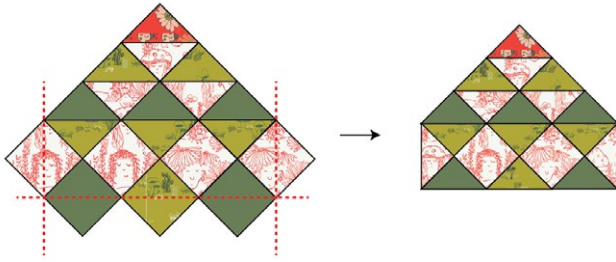


DIAGRAM 3

- Take (2) $3\frac{1}{4}$ " x $3\frac{3}{8}$ " squares from Fabric A and (1) $3\frac{1}{4}$ " x $3\frac{3}{8}$ " square from Fabric B and join them as A-B-A
- Then, pair it to the first assembled unit.

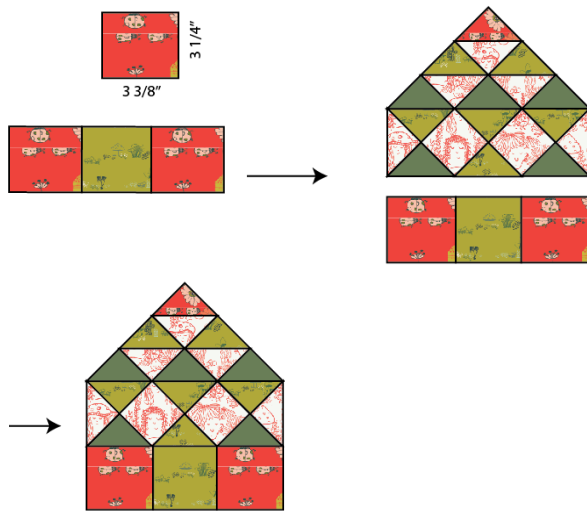


DIAGRAM 4

- Now, take (1) 5" x 5" square from Fabric A and cut on the diagram.
- Place one half, on the top right side of the unit, and the other one on the left side.
- Square of your piece in order to measure 9" x $10\frac{1}{2}$ "

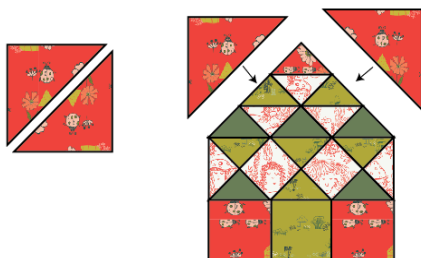


DIAGRAM 5

- Take (2) $1\frac{1}{2}$ " x $10\frac{1}{2}$ " strip from Fabric A and pair them on each side.
- Trim you piece to a 10" x 10"



DIAGRAM 6

- Quilt as desired.
- Repeat the same instructions for the other blocks.



XXXXXXXXXXXXXXXXXXXXXXXXXXXXXXXXXXXX

Congratulations
& enjoy

XXXXXXXXXXXXXXXXXXXXXXXXXXXXXXXXXXXX



artgalleryfabrics.com

NOTE: While all possible care has been taken to ensure the accuracy of this pattern, We are not responsible for printing errors or the way in which individual work varies. Please read instructions carefully before starting the construction of this quilt. If desired, wash and iron your fabrics before starting to cut.

© 2019 Courtesy of Art Gallery Quilts LLC. All Rights Reserved.

2 7/8" x 2 7/8"
Template

Mushroom  Home

2 1/2" x 2 1/2"
Template

Mushroom  Home

3 1/4" x 3 3/8"
Template

Mushroom  Home