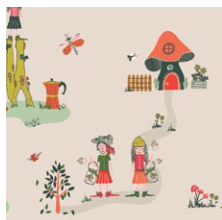


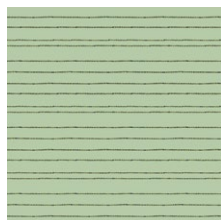
GROWTH CHART



FABRICS DESIGNED BY ALEXANDRA BORDALLO



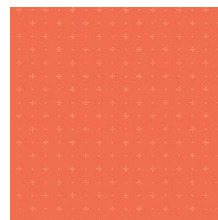
DWM-45600
THE MEADOW FELLOWS



DWM-45601
DEW'S CLOTH-LINE



DWM-45602
JARS O' BUGS



DWM-45603
STARRY ORANGE YOU



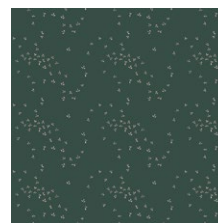
DWM-45604
GLOWLY BOSQUE



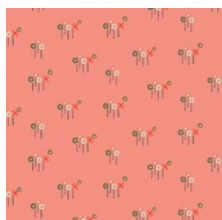
DWM-45605
PLAYFUL MINI BUNTING



DWM-45606
MOSS'S SNAIL MAIL



DWM-45607
FLY NIGHT SKY



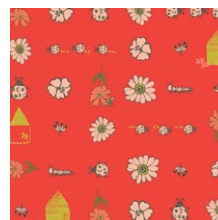
DWM-45608
DAISY BUTTON BUDS



DWM-45609
PHYSIOGNOMIES



DWM-45610
GNOMES' MUSHROOM HOMES



DWM-45611
BUGGY & POSY



FEEL THE DIFFERENCE © 2019 Courtesy of Art Gallery Quilts LLC. All Rights Reserved.



FABRIC REQUIREMENTS

Fabric **A** DWM-45602 1 ½ yd.
 Fabric **B** PE-412 ⅓ yd.
 Fabric **C** PE-461 F8

BACKING FABRIC
 DWM-45602- 4 yds. *(Included)*

CUTTING DIRECTIONS

Four (4) 9" x 37" rectangles from fabric **A**.

Two (2) WOF x 1" strips from fabric **B**.
 Subcut seven (7) 6" x 1" rectangles
 six (6) 4" x 1" rectangles

Ten (10) templates from fabric **B**.

Three (3) templates from fabric **C**.

CONSTRUCTION

Sew all rights sides together with ¼" seam allowance.

- Apply Steam a Seam to the wrong side of all the rectangles and templates from fabric **B** and **C**.
- Take two (2) 9" x 37" rectangles from fabric **A** and join them by the 12" side.
- Repeat the same process with the other two (2) 9" x 37" rectangles from fabric **A**.

- Take seven (7) 6" x 1" rectangles from fabric **B**, and six (6) 4" x 1" rectangles from fabric **B**.
- Place them on the fabric **A** strip every 5" apart.
- For fabric placement and attachment follow Diagram 1.



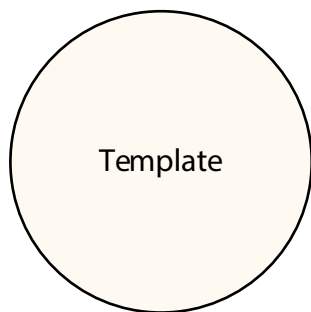
DIAGRAM 1

- Place the templates from fabrics B and C following Diagram 2.



DIAGRAM 2

- Place the batting and quilt your piece.
- Take the 74" x 12" rectangle from fabric **A**.
- Place it face to face to the quilted piece and sew all around at $\frac{1}{4}$ ", leaving a 4" space.
- Flip the piece to the right side.
- Press and do an edge stitch to flatten the Growth Chart.



artgalleryfabrics.com

NOTE: While all possible care has been taken to ensure the accuracy of this pattern, We are not responsible for printing errors or the way in which individual work varies. Please read instructions carefully before starting the construction of this quilt. If desired, wash and iron your fabrics before starting to cut.

© 2019 Courtesy of Art Gallery Quilts LLC. All Rights Reserved.